

A close-up photograph of a cow's face, showing its eyes, nose, and mouth. The cow has black and white patches. The text is overlaid on the top part of the image.

# *Lewis Farms*

**36th Annual Bull Sale**

**FEBRUARY 27, 2021 - SPRUCE GROVE - 1:00PM**

# Welcome

*to our 36th annual sale. In these trying times we can't help but feel fortunate to be a part of an industry that is actually essential. An industry that supports itself internally no matter the obstacle. With very few things going on in the world that make sense, we feel that people involved in AG make sense and matter more than ever. Agriculture is maybe, finally getting half the recognition it deserves.*

*Our beef markets have bounced around in the last 12 months. However, this fall we saw a surge in high calf prices and tremendous bred heifer prices if the quality was present. The fat market and cull trade has been painful, but things are slowly climbing this mid-winter. Times are on the rise.*

*We lost an important member of our family and farm this past May. The man who steered the ship for many decades. Jack Lewis passed away on May 16th at the age of 88. He is missed every day and we are reminded of him in everything we do. With that being said Tyler and Brianna had a baby boy named Jack in September. Kyle and Alexis had another boy, Kolter John in May. The future here is exciting and we wouldn't want to be doing anything else.*

*We would like to thank Leonard and Rhonda Mark and their family for their continued partnership in this event. Leonard's set of bulls continue to raise the bar. The consistency and attention to detail he has in the sector is unmatched. You will be hard pressed to find a more competitive set of performance Fullblood/Fleckvieh bulls.*

*We are pleased and humbled to present the 2021 offering. This set of bulls will apply to most beef producers chasing many different options. We are always striving to raise a better product, a product that enhances our customers bottom line. We pride ourselves in large populated sire groups, more embryo transplants and the largest source of homozygous polled bulls in the country. We've gone the extra mile in genetic testing for polled, color and leptin. This volume of bulls is comprised from a volume of cows about 4 times the size, creating competition for quality. Our winter calving cows requires more maintenance per cow due to the time of year, but our summer born bulls are on a ranch and its ran like a ranch. Requiring the cows to work hard and be more self-sufficient through calving. The success of this sale is based upon repeat customers with long standing relationships in pursuit of top quality bulls.*

*We encourage more people to come view the bulls prior to the sale. Don't be scared to call ahead and make arrangements. We understand this isn't feasible for everyone and we still welcome customers to take part on sale day. DLMS and our third-party consulting crews will be happy to assist in your needs as well. Both those services are free of charge (FYI). We will be cooperating with the safety precautions that are in place at that time. We look forward to hearing from you!*

*Sincerely,  
The Lewis Family*





# Sale Day Information

## Sale Day Contacts



Kyle Lewis  
780.220.9188



Ken Lewis  
780.818.3829



Lennard Mark  
Fullblood Division  
780.842.7207

## Sale Consultants

Northern Livestock Sales  
Jim Pulyk 780.787.0646

## Bouchard Livestock International

Brian Bouchard 403.813.7999

## Bohrson Marketing Services

Scott Bohrson 403.370.3013  
Taylor Richards 306.821.4169  
Matt Criddle 306.539.6934  
Jaxon Payne 306.830.0456



## First Class Cattle Marketing

Darnell Fornwald 403.795.8030  
Shay Martindale 780.812.4581  
Jon Karsin 204.870.0329



## Peterosa Exports

Roger Peter 403.828.9815

## OBI Livestock

Mark Holowaychuk 403.896.4990

## Sale Staff

Col. Dan Skeels - Auctioneer  
Col. Ryan Dorran - Auctioneer  
Mark Stock - Ringman  
Rod MacLeod - Ringman  
Nate Marin - Ringman  
Craig Flewelling - Ringman  
Taylor Richards - Ringman

## Lewis Farms Staff

<b>Full Time</b>	<b>Part Time</b>
Richard Garden	Luis Duarte Bravo
Javier Lopez	Oswaldo Marin Yanez
Grant Bulloch	Dean Zaft
Lucy Salmon	Levi Rimke
Dexter Wideman	Dylan Avers
Josh Arnold	Greg Schmidt

## Simmental Representatives

CSA President - Marlin LeBlanc  
ASA President - Ben Farrant  
ASA Fieldman - Dwayne Martin

Like us on Facebook and Instagram at  
Lewis Farms

[www.lewisfarms.ca](http://www.lewisfarms.ca)

## Terms & Conditions

Cattle will be sold under the standard terms and conditions put forward from the breeders associations and Lewis Farms. Available upon request.

## Location

Lewis Farms is located 2 miles south of Spruce Grove on Secondary Highway 628 between Range Roads 271 and 272. The main yard and sale barn is located on the South side of the road.

## Online Viewing & Bidding

### Internet Bidding Available



For more information call DLMS:  
Mark Shologan 780.699.5082 or  
DLMS Purebred Team 780.991.3025

## Bull Selection Assistance

Purchasing bulls is very important for the direction and production of your cow herd. It is a never-ending search for bull power to improve traits. Being hands on in our breeding program and knowing your cow herd, we would be pleased to assist you in identifying bulls suited for you. We have developed a wide genetic base in our bulls from power bulls to heifer pen orientated, calving ease bulls throughout every segment.

Sight unseen purchases guarantees 100% satisfaction. We would be please to personally serve you.

## Videos

Videos are complete and will be online early February. Videos can be viewed at:

[cattlevids.ca](http://cattlevids.ca) or [lewisfarms.ca](http://lewisfarms.ca)



Mark Shologan 780-699-5082



View video preview clips on the sale offering aprox. 2 weeks prior to the sale by visiting

[www.cattlevids.ca](http://www.cattlevids.ca)

# Sale Day Information

## Agenda

You are invited to view the bulls  
anytime from now to sale day

**Saturday February 27, 2021**

**9:00 am - Presale Viewing**

**1:00 pm - Bull Sale**

## 2020 Offering

<b>61 Black Simmental Yearlings</b>	<b>Page 6 - 26</b>
<b>42 Black Simmental Extra Age</b>	<b>Page 27 - 39</b>
<b>33 Red Simmental Yearlings</b>	<b>Page 40 - 51</b>
<b>29 Red Simmental Extra Age</b>	<b>Page 52 - 60</b>
<b>39 Full Blood Yearlings</b>	<b>Page 61 - 73</b>
<b>29 Black Angus Yearlings</b>	<b>Page 74 - 82</b>
<b>41 Black Angus Extra Age</b>	<b>Page 84 - 96</b>
<b>12 Red Angus Extra Age</b>	<b>Page 97 - 100</b>

## Commitment to Customers

### Volume Discounts:

A minimum of 2 bulls purchased can trigger the volume discount. The Discount will start at 2% beginning at \$15,000 and will increase by 1% every \$10,000, up to a maximum of 7% on the entire purchase.

The discount will only apply to bulls that are paid for in full on Sale Day. Absentee buyers will have 30-day extension for their discounts. Partner bulls do not apply.

## Free Delivery & After Sale Options

**Option A:** Free delivery will be provided by Lewis Farms to central points in Western Canada at the convenience of Lewis Farms, Eastern Canada will be cost shared.

**Option B:** Lewis Farms will keep bulls until May 1, 2021 for no charge. Then by that time the bulls will be picked up unless previous arrangements have been made. Lewis Farms insists all bulls be insured or covered with the Lewis warranty while at Lewis Farms.

**Option C:** Purchasers wishing to pick up their animals on sale day will receive a \$100 discount per bull purchased.

## Polled Testing

A majority of the red and black Simmental bulls are homozygous polled tested. If it simply says Polled, it is because the bull was not tested. Our herd is over 95% homozygous polled. If we had a heterozygous test, it is illustrated. Homozygous polled represents that the progeny can not have horns irregardless of the dam.

## Color Testing

A number of black bulls have been color tested for color expression if not knowing by parentage. A homozygous black bull will not sire a red calf. A heterozygous black bull could sire a red calf. Full blood bulls marked DLF Duluter Free have been tested.

## Leptin Testing

For the past 9 years we have been Leptin Testing the sale offering. Leptin is a protein found in the white fat tissue. The more leptin produced, the stronger the signal sent to the brain to reduce appetite, energy utilization and fat deposition. 3 results are possible from a Leptin Test; TT, CT and CC. TT cattle tend to finish quicker in feedlots and improve marbling on feeder cattle. CC scoring cattle

will take a longer period of time to meet finish grade, however they will increase red meat yield and ribeye in your carcass. We have leptin tested some bull this year. For further information contact Kyle. Results are not published in the catalogue.

## US Export

With regards to exporting bulls out of the country or for testing for admission to stud, Lewis Farms will arrange for all the tests, but the cost will be borne by the producer.

## Health Care

All bulls to be sold are vaccinated and boosted against; IBR, PI3, BVD (type 1 & 2), BRSV, Histophilus, Mannheimia, Pasteurella, 8-Way Blackleg. Vaccines given are Vista Once and Vision 8 Somnus. Treatment in the summer (Safeguard) for internal parasites and Saber for fly control. Treatment in the fall with Ivermectin for internal and external parasites.

This comprehensive health program allows our bulls to be as healthy as possible and protected against all the common communicable diseases or the core vaccines used in the industry.

Footrot vaccine is given; initial shot January and boosted at semen evaluation time (February). This is indicated on the semen evaluation form as footrot vaccine. Please have a close look at the semen evaluation form and any questions don't hesitate to ask me.

Roy Lewis DVM

## Breeding Soundness Evaluation

We look for 3 factors: Spermatozoal motility, morphology and scrotal circumference as well as doing a physical examination and watching the bulls walk. During collection of semen we closely check the penis and inspect for signs of abnormalities.

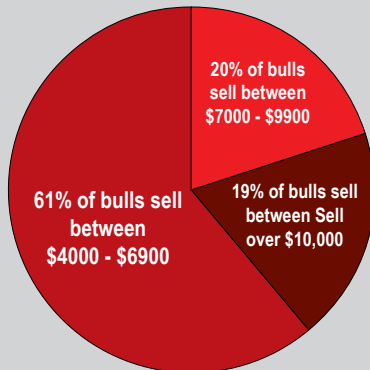
All bulls are sold who exceed one year of age will have been classified as satisfactory in all categories and give us all indications they will go out for you and become good breeding herd bulls. All scrotal measurements will be posted on the supplement sheets.

Deferred on semen bulls will be announced sale day. The only components which are not tested are the libido and the bulls ability to breed. This component is up to you, the purchaser. It is absolutely essential to watch your bull on his first few services to make sure successful breeding is occurring. Any problems or concerns with your purchase(s), please direct back to Lewis Farms and we will check into them for you.

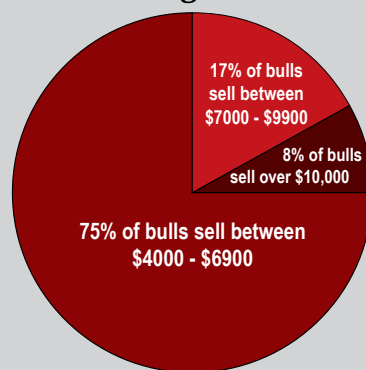


## 2020 Simmental Bulls

### Affordable Bulls



## 2020 Angus Bulls



## Commitment to Customers

Lewis Farms guarantees to sell you a bull that is structurally sound, a bull that has passed semen test done by a licensed veterinarian.

Should any Lewis bull fail to be satisfactory breeder, unable to physically service a cow or heifer, he will be replaced with a bull of equal value. Should this not be possible, an adjustment will be made to reflect the value of the bull in question or a credit will be given towards the purchase of another bull.

We guarantee to provide you with a sound breeding bull.

We, however, will not provide replacement or adjustment for physically injured or mismanagement. Bear in mind, we stress the importance of Lewis Farms Breeding Season Warranty or Third-Party Livestock Insurance:

**Crossfield Agencies**  
Cassie Dorran 403.586.1699

Our warranty program offers a warranty in a language you can understand. While under our warranty your bull is covered for injury, sickness or death. We will service you needs with another bull or a credit to next years sale. Should you have any problem with a bull, contact Lewis Farms directly at 780.962.5050 or through Kyle or Ken's cell phones. We require your veterinarian to complete a report and fax or email it to Lewis Farms. We will work with you to make sure your cows get serviced and your are satisfied with your purchase. We have back up bulls set aside for customers.

Lewis Farms Breeding Season Warranty has been developed to protect your purchase during the most critical, high risk time of a bull's life, the breeding season.

We offer the following options which are the buyers responsibility to purchase at time of settlement:

OPTION	DURATION	RATE
Option 1	3 Months	5%
Option 2	6 Months	8%
Option 3	12 Months	12%

Notify Lewis Farms immediately by phone 780.962.5050. Employ a licensed veterinarian to treat, diagnose and/or fill out a vet form. If the animal dies, a post mortem may be required.

### Coverage - During Breeding Season:

In case of loss, Lewis Farms will not be responsible for anything up and above the purchase of the bull.

#### OPTION 1 & 2

Covers 100% of the purchase price less salvage value when possible

#### OPTION 3

Extended season, covers the animal during and after breeding season. We will cover 80% if the original value, less salvage when possible.

Lewis Farms is responsible to make settlement of an approved warranty claim with a suitable replacement.

### Exclusions to Warranty

Injury or death due to malicious, willful or intentional acts or mistreatment by you or your employees are fraudulent claims.



**Tom McNeely**  
Co-Founder  
(780) 689-7220

I have enjoyed working with the Lewis Farms operation as it has such deep roots in the seedstock industry. The LFE brand is recognizable around the world for quality genetics. The folks at Lewis Farms take pride in the craftsmanship of raising bulls for seedstock producers and commercial cattlemen.

The cowherd is on a year-round mineral program, which is so essential to the overall health and longevity of the bulls. The bulls are raised on a forage-based diet that maximizes their genetic potential. The bulls are raised on a forage-based diet that maximizes their genetic potential and a balanced TMR to promote lean muscle growth.

The main focus is on gut health that promotes proper rumen health at every stage of development. The bulls are also fed organic minerals to help stimulate elevated immunity and proper growth. The overall nutritional health and development of the bulls and the entire cow herd is of utmost importance and is continually being tweaked to meet environmental and seasonal conditions.

If you have any questions about the Lewis Farms nutritional program, please feel free to call. Good luck on sale day!





# Black Simmental Yearling Bulls



## Reference Sires



**1** **LFE BS LEWIS 820G**  
 1326615 LFE 820G Dec. 25, 2019

CE	BW	WW	YW	Milk	MCE	MWWT	API	TI
5.1	5.6	98.4	147.6	28.8	3.5	78	119.38	81.82

Purebred  
 Homo Polled  
 Homo Black  
 BW - 95  
 ADJ WWT - 905  
 ADJ YWT - 1505

LFE CASH 386D  
**LFE GAME FACE 338F**  
 LFE BS AMBER 60D  
 LFE THE RIDDLER 323B  
**LFE BS HEAVEN SENT 654E**  
 LFE BS HEAVEN SENT 98B

- Herd bull prospect, stout, soggy
- Easy on the move, with big feet
- Descendent from the great Heaven cow family





2

# LFE BS LEWIS 304H

1326785 LFE 304H Jan. 1, 2020

CE	BW	WW	YW	Milk	MCE	MWWT	API	TI
4.8	5.3	82.5	118.6	24.3	1.6	65.6	110.55	70.4

Purebred  
Homo Polled  
Homo Black  
BW - 99  
ADJ WWT - 857  
ADJ YWT - 1532

LFE CASH 386D  
LFE GAME FACE 338F  
LFE BS AMBER 60D  
LFE BS LEWIS 322U  
LFE BS SHEILA ANN 21X  
LFE RS SHEILA ANN 89S

- Black blaze out of a tremendous producing cow
- Long bodied, stout topped, good bone work and lots of testicle
- Sons at work for HJD, Berry Creek Colony and Seven O Ranches



LFE BA Lewis 372C - Brother



LFE 21X - Dam

3

# LFE BS LEWIS 850G

1326762 LFE 850G Dec. 29, 2019

CE	BW	WW	YW	Milk	MCE	MWWT	API	TI
1.9	7.1	88.4	130.9	25.9	0.7	70.1	107.16	71.7

Purebred  
Homo Polled  
Hetero Black  
BW - 105  
ADJ WWT - 863  
ADJ YWT - 1489

LFE CASH 386D  
LFE GAME FACE 338F  
LFE BS AMBER 60D  
LFE GOTHAM 819Y  
LFE BS FIRSTBASE 626C  
LFE BS FIRSTBASE 625Z

- Powerfully constructed, one of the heaviest muscled easy fleshing bulls on offer
- Dam and ¾ sister (LFE 86F) are great udder'd, top end females in our herd



LFE Firstbase 16E - Full Sister to Dam



LFE Game Face 338F - Sire



4

# LFE BS LEWIS 815G

1326608 LFE 815G Dec. 24, 2019

Purebred  
Homo Polled  
Homo Black  
BW - 74  
ADJ WWT - 803  
ADJ YWT - 1465

LFE GOTHAM 819Y  
LFE THE RIDDLER 323B  
LFE BS CHARD 23Y  
LFE BOUNTY 3118Z  
LFE BS LASS 641C  
LFE BS LASS 111B

CE	BW	WW	YW	Milk	MCE	MWWT	API	TI
10	0.9	86.1	132.2	25.1	7.3	68.2	144.53	85.66



- Herd bull prospect, out of a sweet Bounty female
- Hair and style to burn, one of the top contenders from a young age
- Brian Pfeffer of Strome purchased a maternal brother in our 2019 offering



LFE The Riddler 323B - Sire



LFE 815G with Dam LFE 641C

5

# LFE PS LEWIS 810G

1326606 LFE 810G Dec. 24, 2019

Percentage  
Homo Polled  
Homo Black  
BW - 80  
ADJ WWT - 888  
ADJ YWT - 1451

LFE GOTHAM 819Y  
LFE THE RIDDLER 323B  
LFE BS CHARD 23Y  
DRAKE POKER FACE 2X  
LFE PS BLACK BERRY 138A  
LFE PS BLACK BERRY 55Y

CE	BW	WW	YW	Milk	MCE	MWWT	API	TI
10.2	0.8	95.5	146	26.3	7.7	74.1	142.95	89.04



- Dam LFE 138A, is a top end 3/4 blood cow; with Final Answer and Poker Face not far away in the pedigree
- Long, stout, and moderate. Not many bulls will sell this spring with an 80lb birth that transcends into 1000lb WW



DRAKE Poker Face 2X - Dam Sire



LFE 810G with Dam LFE 138A



6

# LFE PS LEWIS 836F

1326649 LFE 836G Dec. 27, 2019

CE	BW	WW	YW	Milk	MCE	MWWT	API	TI
10.9	0.6	82.7	124	18.2	5.4	59.6	128.99	78.77

Percentage  
Homo Polled  
Homo Black  
BW - 82  
ADJ WWT - 846  
ADJ YWT - 1433

LFE GOTHAM 819Y  
LFE THE RIDDLER 323B  
LFE BS CHARD 23Y  
LFE BS LEWIS 322U  
LFE STS SAGE 2029X  
CROSSBRED/CROSSBRED

- Another Riddler son with staggering birth and performance data
- ¾ blood, with extra hair and muscle



LFE 368G with Dam 2029X

7

# LFE BS LEWIS 834G

1326643 LFE 834G Dec. 27, 2019

CE	BW	WW	YW	Milk	MCE	MWWT	API	TI
5.7	4.2	90.9	143	25	3.8	70.5	134.18	81.4

Purebred  
Homo Polled  
Homo Black  
BW - 104  
ADJ WWT - 811  
ADJ YWT - 1499

LFE GOTHAM 819Y  
LFE THE RIDDLER 323B  
LFE BS CHARD 23Y  
LFE MR LEWIS 462P  
LFE READY TO TANGO 609S  
LFE CROCUS 624M

- Like his brothers, stout and hairy
- Off the great LFE 609S who is responsible for some many elite females in many different herds. Her biggest accomplishment here would be LFE Beer Money 811Z



LFE Ready to Tango 609S - Dam



LFE The Riddler 323B - Sire





8

## LFE BS LEWIS 840G

1326726 LFE 840G Dec. 23, 2019

Purebred  
Homo Polled  
Homo Black  
BW - 80  
ADJ WWT - 752  
ADJ YWT - 1365

LFE BS LEWIS 420B  
**LFE BEAST MODE 305D**  
LFE BS OPAL 630X  
LFE THE RIDDLER 323B  
**LFE BS ULTRA GAL 52D**  
LFE BS ULTRA GAL 127Y

CE	BW	WW	YW	Milk	MCE	MWWT	API	TI
10.3	1.8	70.9	121.2	20.7	6.5	56.2	132.19	70.12



LFE The Riddler 323B - Dam Sire

- Beast Mode x Riddler combination, one that has done us well in the past
- Easy at birth. LFE 52D is a big bodied, sound build with an up to date udder, have confidence buying bulls out of this female



9

## LFE BS LEWIS 352H

1326935 LFE 352H Jan. 10, 2020

Purebred  
Homo Polled  
Homo Black  
BW - 106  
ADJ WWT - 838  
ADJ YWT - 1513

LFE BS LEWIS 420B  
**LFE BEAST MODE 305D**  
LFE BS OPAL 630X  
3D BLK FULL THROTTLE 483X  
**LFE BS DAKOTA COAL 112A**  
LFE BS DAKOTA COAL 96W

CE	BW	WW	YW	Milk	MCE	MWWT	API	TI
4.9	6.2	79.8	135.3	18.8	1.9	58.7	116.53	68.32



LFE Dakota Coal 96W - Grand Dam

- Beast Mode off a proven Throttle daughter, LFE 112A is a big statured cow with her first son at work for Michael Lutz



LFE BS Dakota Coal 150B - Dam

10

## LFE BS LEWIS 400H

1327323 LFE 400H Jan. 25, 2020

Purebred  
Polled  
Black  
BW - 94  
ADJ WWT - 867  
ADJ YWT - 1493

LFE BS LEWIS 420B  
**LFE BEAST MODE 305D**  
LFE BS OPAL 630X  
MRL THE GOON 121Z  
**LFE BS DAKOTA COAL 150B**  
LFE BS DAKOTA COAL 130X

CE	BW	WW	YW	Milk	MCE	MWWT	API	TI
5.6	4.7	75.4	121.4	21	1.9	58.7	120.96	67.36

- Long bodied, low birth, full brother was a top prospect last spring selling to Kotowich Evergreen Farms



LFE BS Lewis 338G - Full Brother



LFE BS Dakota Coal 130X - Grand Dam



11

# LFE BS LEWIS 328H

1326857 LFE 328H Jan. 5, 2020

Purebred  
Homo Polled  
Hetero Black  
BW - 85  
ADJ WWT - 822  
ADJ YWT - 1435

LFE BS LEWIS 420B  
LFE BEAST MODE 305D  
LFE BS OPAL 630X  
NCB COBRA 47Y  
LFE BS JEWELS 2166D  
LFE RS JEWELS 2128B

CE	BW	WW	YW	Milk	MCE	MWWT	API	TI
8.1	3.5	78.9	126	22.1	5.1	61.6	128.96	71.7

- We feel the most complete Beast Mode son on offer, Cobra dam just gave birth to her 3rd calf
- LFE 328H's maternal sister by Cash just had her first calf, she will be one of the elite cows here going forward. Look for future accolades from this young cow as we feel she is just getting started



LFE Beast Mode 305D - Sire



12

# LFE BS LEWIS 821G

1326616 LFE 821G Dec. 25, 2019

Purebred  
Homo Polled  
Homo Black  
BW - 87  
ADJ WWT - 876  
ADJ YWT - 1476

LFE BS LEWIS 420B  
LFE BEAST MODE 305D  
LFE BS OPAL 630X  
MRL THE GOON 121Z  
LFE BS LASS 111B  
LFE BS LASS 105Y

CE	BW	WW	YW	Milk	MCE	MWWT	API	TI
8.3	2.9	81.5	128	22.6	4.2	63.4	130.75	74.93

- Herd bull, that's extra cocky, big scrotal, functional bull
- Daughter LFE 641C is the mother to Lot 4



LFE BS Lass 111B - Dam



13

# LFE BS LEWIS 334H

1326869 LFE 334H Jan. 6, 2020

Purebred  
Polled  
Black  
BW - 105  
ADJ WWT - 890  
ADJ YWT - 1428

LFE BS LEWIS 420B  
LFE BEAST MODE 305D  
LFE BS OPAL 630X  
HOOKS SHEAR FORCE 38K  
LFE STS BS AN 80Y  
LFE STS AN 637U

CE	BW	WW	YW	Milk	MCE	MWWT	API	TI
7.6	4.2	80.3	131.3	26.7	3.4	66.9	132.4	74.41

- Beast Mode x Shear Force
- LFE 80Y's Riddler son commanded 20K in the 2018 sale to Travis Goings of Nebraska



LFE BS Lewis 335D - Mat. Brother







Lot 14

# 14 LFE PS LEWIS 310H

1326789 LFE 310H Jan. 1, 2020

BW - 103 ADJ WWT - 841 ADJ YWT - 1516

CE BW WW YW Milk MCE MWWT API TI

9.5 3.5 70.6 119.3 25.1 4 60.4 128.14 69.11

# 15 LFE PS LEWIS 319H

1326834 LFE 319H Jan. 4, 2020

BW - 90 ADJ WWT - 775 ADJ YWT - 1325

CE BW WW YW Milk MCE MWWT API TI

9.5 2.7 61.9 106.9 25.1 4 56.1 126.22 64.85

# 16 LFE PS LEWIS 338H

1326875 LFE 338H Jan. 7, 2020

BW - 104 ADJ WWT - 776 ADJ YWT - 1339

CE BW WW YW Milk MCE MWWT API TI

9.5 2.9 65 111.3 25.1 4 57.6 127.05 66.46

Percentage  
Homo Polled  
Homo Black

LFE BS LEWIS 420B  
LFE BEAST MODE 305D  
LFE BS OPAL 630X  
NEW TREND BLACK BANDANA  
LFE BISS BS PEACHY 117Y  
BISS JUST PEACHY 2M

- Blue roan bulls off our best Blue cow
- We had intended for more blue pattern progeny when we flushed 117Y to Beast Mode
- The mating has worked and worked well for our customers
- Full brothers LFE 813E and LFE 871F are previous high sellers to Anchor Lazy U



LFE PS Lewis 813E - Full Brother



LFE PS Lewis 871F - Full Brother



Lot 15



LFE BISS Peachy 117Y - Dam

# 17 LFE BS LEWIS 336H

1339669 LFE 336H Jan. 7, 2020

Purebred  
Homo Polled  
Homo Black  
BW - 98  
ADJ WWT - 801  
ADJ YWT - 1263

LFE BS LEWIS 420B  
LFE BEAST MODE 305D  
aLFE THE RIDDLER 323B  
LFE BS OPAL 630X  
LFE BS HEAVEN SENT 647D  
LFE HEAVEN SENT 30X

CE BW WW YW Milk MCE MWWT API TI

8.2 3.5 82.8 138.8 20.6 6.1 62 128.21 75.95

# 18 LFE BS LEWIS 354H

1326937 LFE 354H Jan 11, 2020

Purebred  
Homo Polled  
Homo Black  
BW - 96  
ADJ WWT - 766  
ADJ YWT - 1254

LFE BS LEWIS 420B  
LFE BEAST MODE 305D  
aLFE COMMISSIONER 811Z  
LFE BS OPAL 630X  
LFE BS CROCUS 623C  
LFE CROCUS 123X

CE BW WW YW Milk MCE MWWT API TI

7.9 4 68.3 119.9 20 3.6 54.2 120.99 65.6



19

**LFE BS LEWIS 380H**

1327216 LFE 380H Jan. 19, 2020

BW - 100 ADJ WWT - 1004 ADJ YWT - 1604

CE BW WW YW Milk MCE MWWT API TI

5.7 5.2 85.8 135.5 13.7 2.4 56.6 119.68 73.8



Lot 19

20

**LFE BS LEWIS 394H**

1327226 LFE 394H Jan. 23, 2020

BW - 92 ADJ WWT - 830 ADJ YWT - 1380

CE BW WW YW Milk MCE MWWT API TI

6.1 3.9 81.7 122.7 20.6 2.6 61.5 118.96 73.05

Purebred  
Homo Polled  
Black

REMINGTON ON TARGET 2S  
LFE BISS BLACKADVANCE 426U  
LFE BILLY 80M  
LFE BRING DOWN THE HOUSE  
LFE BS MS LEWIS 646R  
LFE 75% 22P



Lot 20

- Full brothers that trace back to two of the very best to ever be bred here. Advance and LFE 646R
- LFE 646R is the oldest cow in our herd and still resides at Sangudo. Her contributions to the Simmental breed are endless. LFE Dark Night and LFE 65Y are two to name a few
- Lot 19 and 20 are power bulls with extra hair and muscle, they are agile and built for today's times



LFE BS MS Lewis 646R - Dam



LFE BISS Black Advance 426U - Sire to Lot 19/20



LFE Dark Night 350U - Brother to Lot 19/20



LFE BS Violet 65Y - Maternal Sister







21

**LFE BS LEWIS 362H**

1327199 LFE 362H Jan. 14, 2020

Purebred  
Homo Polled  
Homo Black  
BW - 80  
ADJ WWT - 715  
ADJ YWT - 1265

LFE BS LEWIS 420B  
**LFE BEAST MODE 305D**  
LFE BRING DOWN THE HOUSE  
LFE BS OPAL 630X  
**LFE BS CROCUS 61IX**  
LFE BS CROCUS 52W

CE	BW	WW	YW	Milk	MCE	MWWT	API	TI
11.7	0.6	55.6	93.4	22.4	5.7	50.2	126.24	60.45



LFE BS Crocus 61IX - Dam to Lot 21  
Grand Dam to Lot 22

- Low birth, soft made, easy moving bull
- His Dam has been a farm favorite for the better part of 10 years
- She is royally bred from our most productive black cow family (Crocus)

• Her best Contributions have been LFE 3A selling to R Plus and 314B White Snake selling to Chad Meunier



22

**LFE BS LEWIS 353H**

1326936 LFE 353H Jan. 11, 2020

Purebred  
Polled  
Black  
BW - 100  
ADJ WWT - 873  
ADJ YWT - 1447

LFE BS LEWIS 420B  
**LFE BEAST MODE 305D**  
LFE BS OPAL 630X  
LFE MCDAVID 413C  
**LFE BS CROCUS 616D**  
LFE BS CROCUS 61IX

CE	BW	WW	YW	Milk	MCE	MWWT	API	TI
6.2	5	81.8	132.6	23	3.8	63.9	119.98	71.21



LFE Crocus 3A - Sister to Dam

- Beast Mode son with all the bells and whistles, from the unsurpassed Crocus cow family
- His 3/4 brother sells as Lot 21



23

**LFE BS LEWIS 854G**

1326765 LFE 854G Dec. 30, 2019

Purebred  
Homo Polled  
Homo Black  
BW - 80  
ADJ WWT - 736  
ADJ YWT - 1349

LFE BS LEWIS 420B  
**LFE BEAST MODE 305D**  
MRL THE GOON 121Z  
LFE BS OPAL 630X  
**LFE BS JAMIE 2189C**  
LFE BS JAMIE 2003Z

CE	BW	WW	YW	Milk	MCE	MWWT	API	TI
8.7	2	66.2	109.5	18.6	5.2	51.7	123.35	64.4



LFE BS Lewis 3147B - Bro. to Dam

- Big time power bull with extra frame and dimension
- LFE 2189C's first son sold to JC High Ranching at Pincher Creek



24

# LFE BS LEWIS 307H

1326786 LFE 307H Jan. 1, 2020

Purebred  
Homo Polled  
Homo Black  
BW - 99  
ADJ WWT - 764  
ADJ YWT - 1390

LFE POWER WAGON 365A  
**LFE HEAVY DUTY 3306D**  
LFE BS FORTUNE 41Y  
LFE COMMISSIONER 811Z  
**LFE BS MARY 624C**  
LFE BS MARY 172Z

CE	BW	WW	YW	Milk	MCE	MWWT	API	TI
4.9	4.5	71.8	110	17.5	0.8	53.4	115.04	66.13



LFE BS Mary 624C - Dam

- Lead Heavy Duty son. Heavy Duty was purchased by Hayes Land and Cattle in the 2018 Sale
- LFE 307H is a product of one of our best young cows, LFE 624C will see time in the donor pen this spring



25

# LFE BS LEWIS 363H

1327201 LFE 363H Jan. 14, 2020

Purebred  
Homo Polled  
Homo Black  
BW - 100  
ADJ WWT - 815  
ADJ YWT - 1452

LFE POWER WAGON 365A  
**LFE HEAVY DUTY 3306D**  
LFE BS FORTUNE 41Y  
LFE THE DARK NIGHT 350U  
**LFE BS TINA 19Z**  
LFE BS TINA 97T

CE	BW	WW	YW	Milk	MCE	MWWT	API	TI
2.6	5.3	77	111.8	22.5	-0.1	61	111.03	67.42



LFE BS Tina 19Z - Dam



LFE Hoover 847D - Brother

- Maternal brother to LFE Hoover
- LFE 19Z is a big power cow with an impressive production track



26

# LFE BS LEWIS 356H

1326938 LFE 356H Jan. 12, 2020

Purebred  
Polled  
Black  
BW - 90  
ADJ WWT - 827  
ADJ YWT - 1427

LFE POWER WAGON 365A  
**LFE HEAVY DUTY 3306D**  
LFE BS FORTUNE 41Y  
LFE TRIUMPH 816A  
**LFE BS TINA 103D**  
LFE BS TINA 82Z

CE	BW	WW	YW	Milk	MCE	MWWT	API	TI
6.5	3.5	76	113.2	19.7	1	57.7	118.28	68.84



LFE Heavy Duty 3306D - Sire

- Long made Heavy Duty son
- Brother sold last year to Bar C 4 Farms at Cherhill, AB





27

**LFE BS LEWIS 388H**

1327221 LFE 388H Jan. 21, 2020

CE	BW	WW	YW	Milk	MCE	MWWT	API	TI
3.9	6.2	90	138.9	25.4	1.6	70.4	130.31	79.82

Purebred  
Homo Polled  
Hetero Black  
BW - 100  
ADJ WWT - 884  
ADJ YWT - 1546

LFE BS LEWIS 420B  
**LFE HOOVER 847D**  
LFE BS TINA 19Z  
PRL ALAMO ARMOUR 13 111A  
**LFE BS OPAL 101D**  
LFE BS OPAL 62B

- One of the most complete bulls on offer
- LFE 101D is Grand Daughter to LFE 630X is the mother to Beast Mode
- Recording an adjusted weaning of 1003lbs



LFE Beast Mode 305D - Brother



LFE BS Opal 630X - Grand Dam



LFE Hoover 847D - Sire

28

**LFE BS LEWIS 395H**

1327227 LFE 395H Jan. 24, 2020

CE	BW	WW	YW	Milk	MCE	MWWT	API	TI
2.4	6	87.6	133.5	21.6	1.6	65.4	118.47	73.98

Purebred  
Homo Polled  
Hetero Black  
BW - 89  
ADJ WWT - 793  
ADJ YWT - 1380

LFE BS LEWIS 420B  
**LFE HOOVER 847D**  
LFE BS TINA 19Z  
KBR CHUNK 231Z  
**LFE BS JULI 2258D**  
LFE BS JULI 2102U

- Black badly with extra style and substance
- Hoover sons come with additional mass and are appropriate sized at calving
- Dam LFE 2258D is a bold sprung big topped cow that is 2 for 2 in making the good ones



LFE 395H with Dam LFE 2258D



29

# LFE BS LEWIS 347H

1326931 LFE 347H Jan. 10, 2020

Purebred  
Homo Polled  
Homo Black  
BW - 85  
ADJ WWT - 923  
ADJ YWT - 1510

LFE BS LEWIS 420B  
LFE HOOVER 847D  
LFE BS TINA 19Z  
LFE BELLAGIO 529X  
LFE BS KATARINA 2276D  
LFE RS KATARINA 2156A

CE	BW	WW	YW	Milk	MCE	MWWT	API	TI
4.9	5	95.3	140.5	26.8	2.1	74.5	125.45	82.28

- LFE 347H records the highest weaning weight of this whole segment
- Big spread from 85lbs to 1044lbs in a short amount of time
- His Bellagio Dam is great udder'd power cow that stems from a long line of Katarina cows



LFE Bellagio 529X - Dam Sire



LFE 347H with Dam LFE 2276D

30

# LFE BS LEWIS 379H

1327215 LFE 379H Jan. 19, 2020

Purebred  
Homo Polled  
Hetero Black  
BW - 100  
ADJ WWT - 856  
ADJ YWT - 1518

LFE BS LEWIS 420B  
LFE HOOVER 847D  
LFE BS TINA 19Z  
LFE POWER WAGON 365A  
LFE BS MARY 136C  
LFE BS MARY 7Y

CE	BW
3.8	5.7
WW	YW
87.5	134
Milk	MCE
22.6	0.7
MWWT	TI
66.4	76
API	
122.92	

- On the hunt for power driven black bulls, study these Hoover sons
- LFE 379H's maternal sister sold in our 2018 Female Sale to Kolton McIntosh



LFE BS Mary 17E - Mat. Sister



31

# LFE BS LEWIS 421H

1330502 LFE 421H Feb. 3, 2020

Purebred  
Polled  
Black  
BW - 95  
ADJ WWT - 836  
ADJ YWT - 1374

LFE BS LEWIS 420B  
LFE HOOVER 847D  
LFE BS TINA 19Z  
LFE POWER WAGON 365A  
LFE BS VIOLET 48D  
LFE BS MS LEWIS 646R

CE	BW
4.6	4.8
WW	YW
89.4	137.6
Milk	MCE
22	1.8
MWWT	TI
66.7	78.9
API	
126.04	

- Hoover off of LFE 48D, Haggards dam
- Haggard was a sale feature and second bull to sell in the 2019 sale, selling to Westman Farms



LFE Haggard 350F - Brother





32

# LFE BS LEWIS 322H

1326839 LFE 322H Jan. 4, 2020

CE	BW	WW	YW	Milk	MCE	MWWT	API	TI
2.5	7.6	95.5	143.1	25.7	0.8	73.5	123.82	79.77

Purebred  
Homo Polled  
Hetero Black  
BW - 104  
ADJ WWT - 839  
ADJ YWT - 1402

LFE BS LEWIS 420B  
LFE HOOVER 847D  
LFE BS TINA 19Z  
NCB COBRA 47Y  
LFE BS FORTUNE 2193D  
LFE BS FORTUNE 148B



- One of the best ones in the pen. His Cobra dam is something we are trying to emulate
- Wide based, soggy made, extra hair and substance



NCB Cobra 47Y - Dam Sire



LFE 322H with Dam LFE 2193D



33

# LFE BS LEWIS 344H

1326924 LFE 344H Jan. 9, 2020

Purebred  
Polled  
Black  
BW - 105  
ADJ WWT - 846  
ADJ YWT - 1446

LFE BS LEWIS 420B  
LFE HOOVER 847D  
LFE BS TINA 19Z  
NCB COBRA 47Y  
LFE BS AN 3D  
LFE BS AN 634A

CE	BW	WW	YW	Milk	MCE	MWWT	TI	API
3.1	6.2	92.1	137	24.1	0.1	70.2	78.65	122.22



LFE Chief 805D - Brother to Dam

- 3/4 brother to Lot 32. Proud fronted, heavy haired individual
- Absolute sired sister just calved today, and she is the type we enjoy raising

34

# LFE BS LEWIS 357H

1326939 LFE 357H Jan. 12, 2020

Purebred  
Polled  
Black  
BW - 107  
ADJ WWT - 859  
ADJ YWT - 1433

LFE BS LEWIS 420B  
LFE HOOVER 847D  
LFE BS TINA 19Z  
LFE POWER WAGON 365A  
LFE BS PEARL 96E  
LFE KJLI BS LILLY 139Y

CE	BW	WW	YW	Milk	MCE	MWWT	TI	API
1.7	7.6	95.7	147.9	20.8	-0.5	68.7	77.71	119.22

35

# LFE BS LEWIS 396H

1327318 LFE 396H Jan. 24, 2020

Purebred  
Polled  
Black  
BW - 90  
ADJ WWT - 805  
ADJ YWT - 1555

LFE BS LEWIS 420B  
LFE HOOVER 847D  
LFE BS TINA 19Z  
LFE POWER WAGON 365A  
LFE BS PEACHY 660D  
LFE BISS BS PEACHY 117Y

CE	BW	WW	YW	Milk	MCE	MWWT	TI	API
4.4	5.2	81.8	128	23.4	0.7	64.3	74.63	124.33



36

**LFE BS LEWIS 806G**

1326602 LFE 806G Dec. 23, 2019

CE	BW	WW	YW	Milk	MCE	MWWT	API	TI
9.3	1.5	81.9	121.8	24.2	5.4	65.2	129.84	76.78

Purebred  
Hetero Polled  
Homo Black  
BW - 85  
ADJ WWT - 843  
ADJ YWT - 1493

NCB COBRA 47Y  
LFE BS LEWIS 3050E  
LFE BS MS TUDOR 2004C  
TNT TANKER U263  
LFE BS DREAMLADY 50Y  
KJLI RAZZLE DAZZLE 628R



LFE 806G with Dam LFE 50Y

- Donor dam 50Y is the best 628R daughter in our herd. She has done it all for us
- LFE 806G is no surprise, wide based, big foot, and loads of rib. One of the feature bulls to sell in this sale. Coming at us at 85lbs, this guy is a baldy stud with all the bells and whistles
- Sire LFE 3050E is a Cobra son we sold to Muirheads in the 2019 Sale. We have used him on heifers and select cows



LFE BS Dreamlady 50Y - Dam

37

**LFE BS LEWIS 321H**

1326837 LFE 321H Jan. 4, 2020

CE	BW	WW	YW	Milk	MCE	MWWT	API	TI
6.4	4.7	81.4	123.3	23	2.5	63.7	121.01	72.12

Purebred  
Homo Polled  
Homo Black  
BW - 102  
ADJ WWT - 836  
ADJ YWT - 1361

NCB COBRA 47Y  
LFE BS LEWIS 3050E  
LFE BS MS TUDOR 2004C  
LFE BLACK LAKOTA 385W  
LFE BS CHARO 40Z  
BISS SIMPLY THE BEST 124S



LFE BS Lewis 3050E - Sire

- 3050E son with perfect blaze, sound on the move
- LFE 40Z is a top end cow. Four years ago, we donated a bred heifer in the Simmental Benefit Auction, she was a LFE 40Z daughter by McDavid that Mackenzie Skeels won.
- These Charo daughters rarely miss and 321H is a testament to that



LFE 40Z - Dam





Lot 38



Profit Maker- Sire to Lots 38-40



LFE BS Shelia 68F - Mat. Sister



LFE BS Shelia 621Y - Dam to Lot 38-41



Lot 39

**38 LFE BS LEWIS 841G**  
 1326728 LFE 841G Dec. 28, 2019

BW - 90 ADJ WWT - 879 ADJ YWT -1316

CE	BW	WW	YW	Milk	MCE	MWWT	API	TI
8.3	1.4	70.5	103.5	20.4	4	55.7	125.05	70.54

**39 LFE BS LEWIS 853G**  
 1326764 LFE 853G Dec. 30, 2019

BW - 100 ADJ WWT - 854 ADJ YWT - 1404

CE	BW	WW	YW	Milk	MCE	MWWT	API	TI
8.6	2.1	78.5	115.8	19.6	5	58.9	126.84	74.54

**40 LFE BS LEWIS 857G**  
 1326767 LFE 857G Dec. 30, 2019

BW - 79 ADJ WWT - 760 ADJ YWT - 1235

CE	BW	WW	YW	Milk	MCE	MWWT	API	TI
8.3	1.1	67.8	99.6	20.4	4	54.3	124.52	69.27



Lot 40

Purebred  
 Homo Polled  
 Homo Black

PROFIT  
**VCL LKC PROFIT MAKER 604D**  
 BF MISS CRYSTEEL TANGO  
 LFE THE DARK NIGHT 350U  
**LFE BS SHEILA 621Y**  
 LFE BS SHEILA 75U

- A monumental flush for us! Sheila 621Y is the most decorated and accomplished donor in our possession
- Sheila females are in high demand in the Simmental breed. LFE 621Y excels at producing top end sons and elite donor type females
- The mating to Profit Maker clicked well in the bull pen and replacement. These sons possess long tops, big extension on an athletic chassis. The blaze is a bonus
- Her natural calf sired by WLB Big Northern sells as Lot 41. He is a month behind in age but every bit as good



LFE BS Lewis 329C - Brother



LFE Power Shift 339C - Brother



41

**LFE BS LEWIS 407H**

1327330 LFE 407H Jan. 23, 2020

Purebred  
Homo Polled  
Homo Black  
BW - 70  
ADJ WWT - 750  
ADJ YWT - 1238

CE	BW	WW	YW	Milk	MCE	MWWT	API	TI
4.7	2.6	82.1	119.5	24.2	2.9	65.3	115.96	72.59

MRL EL TIGRE 52Z  
WLB BIG NORTHERN 52Z 416ID  
WLB 156S BELLE 3552W  
LFE THE DARK NIGHT 350U  
LFE BS SHEILA 621Y  
LFE BS SHEILA 75U

- LFE 68F topped our 2018 fall sale selling to Sandy Reid in Ontario
- LFE 23C was a sale feature in our 2016 sale selling to South Paw Cattle Co
- LFE 13F was a Highlight Riddler daughter selling to the Kotowich family
- LFE 329C sold to Brian Klutz and family and 339C was a sale topper to Rendezvous Farms



LFE Shelia 13F - Mat. Sister Lots 38-41



LFE Shelia 23C - Sister to Lots 38-41



WLB Big Northern 416ID- Sire Lot 41



42

**LFE BS LEWIS 342H**

1326922 LFE 342H Jan. 9, 2020

Purebred  
Homo Polled  
Homo Black  
BW - 103  
ADJ WWT - 909  
ADJ YWT - 1509

CE	BW	WW	YW	Milk	MCE	MWWT	API	TI
4.9	5	89.3	127.6	18.9	2.9	63.6	125.2	76.57

PROFIT  
VCL LKC PROFIT MAKER 604D  
BF MISS CRYSTEEL TANGO  
TNT TANKER U263  
LFE BS VIOLET 65Y  
LFE BS MS LEWIS 646R

- Profit Maker son out of prolific donor LFE 65Y
- Maternal brother sold to the Szybunka family from Sangudo
- 3rd highest performing black yearling in the 205 day race



LFE BS Lewis 832D - Maternal Brother



LFE BS Violet 65Y - Dam



LFE BS Ms Lewis 646R - Grand Dam







43

**LFE BS LEWIS 858G**

1326768 LFE 858G Dec. 30, 2019

Purebred  
Homo Polled  
Hetero Black  
BW - 79  
ADJ WWT - 789  
ADJ YWT - 1290

LFE TRIUMPH 816A  
**LFE NIGHT HAWK 3013D**  
LFE RRS CIARA 2158Z  
LFE BEAST MODE 305D  
**LFE BS BEAUTY 634E**  
LFE BS BLACK BEAUTY 620A

CE	BW	WW	YW	Milk	MCE	MWWT	API	TI
12.2	1.2	68.4	108.6	19.9	6.9	54.1	128.37	69.1



LFE Night Hawk 3013D - Sire

- Calving ease prospect, low birth, abundance of growth and style
- Dam LFE 634E is a moderate black baldie cow that we like



44

**LFE BS LEWIS 359H**

1327187 LFE 359H Jan. 12, 2020

Purebred  
Homo Polled  
Homo Black  
BW - 78  
ADJ WWT - 917  
ADJ YWT - 1567

LFE TRIUMPH 816A  
**LFE NIGHT HAWK 3013D**  
LFE RRS CIARA 2158Z  
LFE CASH 386D  
**LFE BS SADIE 33F**  
RUST MISS 595C

CE	BW	WW	YW	Milk	MCE	MWWT	API	TI
12.8	1.6	78.9	118	24.3	6.8	63.8	132.22	76.94



LFE 359H with Dam LFE 33F

- This guy is what it is all about, first calf heifer unassisted at 78lbs
- Night Hawk progeny are proving their worth in the purebred and commercial sector
- Calving ease, meshed with big growth, style and durable structure

• LFE 33F's dam came from the great Rust program in North Dakota



45

**LFE BS LEWIS 369H**

1342113 LFE 369H Jan. 15, 2020

Purebred  
Homo Polled  
Homo Black  
BW - 90  
ADJ WWT - 851  
ADJ YWT - 1414

LFE TRIUMPH 816A  
**LFE NIGHT HAWK 3013D**  
LFE RRS CIARA 2158Z  
LFE STYLE 363B  
**LFE BS 48F**  
LFE BS CROCUS 179W

CE	BW	WW	YW	Milk	MCE	MWWT	API	TI
12.6	1.2	69.0	103.1	23.2	7.4	57.7	128.54	70.52



LFE Crocus 179W - Grand Dam

- Moderate at birth, big feet, big hair, and lots of mass in a smooth package
- LFE 48F is the real deal, baldy cow with a near perfect udder



46

# LFE BS LEWIS 861G

1326775 LFE 861G Dec. 29, 2019

Purebred  
Homo Polled  
Homo Black  
BW - 69  
ADJ WWT - 832  
ADJ YWT - 1406

LFE TRIUMPH 816A  
LFE NIGHT HAWK 3013D  
LFE RRS CIARA 2158Z  
LFE STYLE 363B  
LFE BS SUNSHINE 21F  
LFE BS SUNSHINE 660C

CE	BW	WW	YW	Milk	MCE	MWWT	API	TI
13.8	-0.1	73.8	108.6	23.2	7.3	60.1	132.68	75.75

- Night Hawk son with all the bells and whistles
- Unmatched birth to weaning spread, this guy's Style dam is front pasture cow



LFE Style 363B - Dam Sire



47

# LFE BS LEWIS 330H

1326862 LFE 330H Jan. 6, 2020

Purebred  
Homo Polled  
Homo Black  
BW - 76  
ADJ WWT - 790  
ADJ YWT - 1377

LFE TRIUMPH 816A  
LFE NIGHT HAWK 3013D  
LFE RRS CIARA 2158Z  
LFE CASH 386D  
LFE BS CASSIDY 84F  
LFE BS CASSIDY 616C

CE	BW	WW	YW	Milk	MCE	MWWT	API	TI
12.5	1	65.6	95.4	21.1	6.6	53.9	126.2	66.64



ULTRA 90N - Great Grand Dam



LFE 330H with Dam 84F



- Easy on the eyes, low birth baldie
- Dam LFE 84F is a Cash off the great Ultra Cascade cow

48

# LFE BS LEWIS 438H

1330516 LFE 438H Feb. 11, 2020

Purebred  
Homo Polled  
Homo Black  
BW - 80  
ADJ WWT - 861  
ADJ YWT - 1448

LFE CASH 386D  
LFE HAGGARD 350F  
LFE BS VIOLET 48D  
LFE BEAST MODE 305D  
LFE BS CHARD 7F  
LFE BS CHARD 23Y

CE	BW	WW	YW	Milk	MCE	MWWT	API	TI
11	1.2	78.5	125	23.4	6.9	62.7	133.45	75.54

- Low birth, hairy and vigour Haggard son
- Haggard sold right behind Game Face in the 2019 sale to Westman Farms



LFE The Riddler 323B - Bro to Dam







49

**LFE BS LEWIS 365H**

1327203 LFE 365H Jan. 14, 2020

Purebred  
Homo Polled  
Hetero Black  
BW - 81  
ADJ WWT - 846  
ADJ YWT - 1420

LFE CASH 386D  
**LFE HAGGARD 350F**  
LFE BS VIOLET 48D  
LFE BLOOD RUSH 833A  
**LFE RS DORIS 29F**  
LFE RS DORIS 2084B

CE	BW
8.7	2.8
WW	YW
73	107.2
Milk	MCE
27.2	3.1
MWWT	TI
63.7	72.17
API	
127.65	

- Heifer friendly, low birth
- Dam is a red Blood Rush female



LFE Haggard 350F - Sire



50

**LFE BS LEWIS 386H**

1327219 LFE 386H Jan. 21, 2020

Purebred  
Homo Polled  
Homo Black  
BW - 60  
ADJ WWT - 714  
ADJ YWT - 1252

LFE CASH 386D  
**LFE HAGGARD 350F**  
LFE BS VIOLET 48D  
LFE THE RIDDLER 323B  
**LFE BS LIL BIT OF HEAVEN 619E**  
LFE LITTLE BIT OF HEAVEN

CE	BW
11.5	-0.8
WW	YW
67	103.6
Milk	MCE
20.8	6.4
MWWT	TI
54.3	72.19
API	
133.23	

- Calving ease Haggard son
- Direct Heaven Sent daughter; maternal merit, keep the daughters from this guy



LFE Heaven Sent 30X - Grand Dam



51

**LFE BS LEWIS 406H**

1327328 LFE 406H Jan. 28, 2020

Purebred  
Homo Polled  
Black  
BW - 83  
ADJ WWT - 825  
ADJ YWT - 1388

LFE CASH 386D  
**LFE HAGGARD 350F**  
LFE BS VIOLET 48D  
LFE STYLE 363B  
**LFE BS KAT 671E**  
LFE BS KAT 51D

CE	BW
10.6	1.6
WW	YW
74.4	113.7
Milk	MCE
23.7	6.9
MWWT	TI
60.9	74.24
API	
129.61	

- Haggard son out of one of the best young cows on the place
- Style females are in high demand



LFE Kat 51D - Grand Dam



52

**LFE BS LEWIS 404H**

1327325 LFE 404H Jan. 28, 2020

Purebred  
Homo Polled  
Homo Black  
BW - 79  
ADJ WWT - 832  
ADJ YWT - 1445

LFE CASH 386D  
**LFE HAGGARD 350F**  
LFE BS VIOLET 48D  
LFE THE RIDDLER 323B  
**LFE BS FIRSTBASE 610E**  
LFE BS FIRSTBASE 631A

CE	BW
9.6	2.1
WW	YW
80.3	122.2
Milk	MCE
23.1	5.0
MWWT	TI
63.3	77.11
API	
129.73	

- Calving ease option
- Dam is a black - red carrier. Brother to dam sold last spring to Dustin Sand



LFE Riddler 323B - Dam Sire



53

**LFE BS LEWIS 318H**

1326817 LFE 318H Jan. 3, 2020

Purebred  
Homo Polled  
Black  
BW - 84  
ADJ WWT - 742  
ADJ YWT - 1404

LFE BOUNTY 3118Z  
**LFE CASH 386D**  
LFE BS FIRSTBASE 39B  
LFE BEAST MODE 305D  
**LFE BS DAKOTA COAL 629E**  
LFE BS DAKOTA COAL 130X

CE	BW
9.3	3.3
WW	YW
61.9	97.5
Milk	MCE
22.8	4.9
MWWT	TI
53.8	62.81
API	
121.59	

- Low birth black baldie
- Dakota Coal 130X has sons working for Kevin Bullee and Rosewillow Farms



LFE Dakota Coal 130X - Grand Dam



54

**LFE PS LEWIS 824G**

Unregistered LFE 824G Dec. 25, 2019

Percentage  
Homo Polled  
Homo Black  
BW - 84  
ADJ WWT - 787  
ADJ YWT - 1262

SAV PEDIGREE 4834  
**BOSS LAKE Bonafide 722E**  
HF ECHO 206Y  
LFE RANCHER 396U  
**LFE PS ZARA 2128X**  
ANGUS/ANGUS

CE	BW
13.2	0.6
WW	YW
67.6	116.2
Milk	MCE
19.3	8
MWWT	TI
53.1	62.95
API	
120.23	

- Bonafide sired half blood, low birth, moderate made, added growth and hybrid vigour
- Dam is a 10-year-old Stubby female



LFE 824G with Dam LFE 2128X



55

**LFE BS LEWIS 849G**

1326761 LFE 849G Dec. 29, 2019

Purebred  
Homo Polled  
Black  
BW - 84  
ADJ WWT - 843  
ADJ YWT - 1480

CCR COWBOY CUT 5048Z  
**WS PROCLAMATION E202**  
WS MISS SUGAR C4  
LFE BEAST MODE 305D  
**LFE BS MIA 647E**  
LFE RS MS LEWIS 196W

CE	BW
11	1.8
WW	YW
88.1	138
Milk	MCE
26.1	7.1
MWWT	TI
70.2	88.74
API	
153.56	

56

**LFE BS LEWIS 372H**

1327206 LFE 372H Jan. 15, 2020

Purebred  
Homo Polled  
Homo Black  
BW - 67  
ADJ WWT - 768  
ADJ YWT - 1331

CCR COWBOY CUT 5048Z  
**WS PROCLAMATION E202**  
LFE BEAST MODE 305D  
WS MISS SUGAR C4  
**LFE BS CHARO 638E**  
LFE BS CHARO 23Y

CE	BW
13.1	-0.8
WW	YW
79.9	126.3
Milk	MCE
24.6	8.9
MWWT	TI
64.6	86.8
API	
156.53	







57

**LFE BS LEWIS 323H**

1326841 LFE 323H Jan. 4, 2020

Purebred  
Polled  
Black  
BW - 84  
ADJ WWT - 859  
ADJ YWT - 1409

CCR COWBOY CUT 5048Z  
**WS PROCLAMATION E202**  
WS MISS SUGAR C4  
LFE TRIUMPH 816A  
**LFE BS CRANBERRY 64F**  
LFE BISS CRANBERRY 644T

CE	BW
9.2	3.1
WW	YW
95.9	146.6
Milk	MCE
24.6	5
MWWT	TI
72.6	89.82
API	
148.38	



LFE Cranberry 644T - Grand Dam

- First set of Proclamation sons to sell
- Low birth, stylish with big growth numbers



58

**LFE BS LEWIS 842G**

1326729 LFE 842G Dec. 28, 2019

Purebred  
Homo Polled  
Homo Black  
BW - 96  
ADJ WWT - 814  
ADJ YWT - 1233

CCR COWBOY CUT 5048Z  
**WS PROCLAMATION E202**  
WS MISS SUGAR C4  
LFE BEAST MODE 305D  
**LFE BS HARLOW 620E**  
LFE BS HARLOW 630Y

CE	BW
10.1	3.2
WW	YW
87.2	134.5
Milk	MCE
25	5.7
MWWT	TI
68.6	86.42
API	
148.85	

- Proclamation son, Proclamation is Cowboy Cut son from Wilkenson Simmentals in North Dakota
- 842G is a member of the Harlow cow family



LFE Harlow 630Y - Grand Dam



LFE Harlow 639B - Sister to Dam



59

**LFE BS LEWIS 813G**

1326674 LFE 813G Dec. 24, 2019

Purebred  
Homo Polled  
Black  
BW - 66  
ADJ WWT - 810  
ADJ YWT - 1210

NICHOLS LEGACY 615I  
**HOOKS SHEAR FORCE 38K**  
C&D TRACY  
LFE STYLE 363B  
**LFE BS CROCUS 653E**  
LFE BS CROCUS 119D

CE	BW
15.8	-2.5
WW	YW
63.1	90.6
Milk	MCE
29.7	8.9
MWWT	TI
61.3	77.59
API	
150.98	



HOOKS Shear Force 38K - Sire

- Shear Force baldy, incredible birth and calving ease ability
- 813G packs style, hair and structure on a medium frame
- Good for use on heifers

**Volume Discount**  
Take note on page 3 - the NEW volume discount details



# Black Simmental Extra Age Bulls

## Reference Sires



LFE Beast Mode 305D



NCB Cobra 47Y



VCL VKC Profit Maker 604D



LFE Hoover 847D

100

## LFE BS LEWIS 3086G

1334247 LFE 3086G May 14, 2019

Purebred  
Polled  
Black  
BW - 90  
ADJ WWT - 701  
Jan 15 - 1630

PROFIT  
VCL LKC PROFIT MAKER 604D  
BF MISS CRYSTEEL TANGO  
LFE BELLAGIO 529X  
LFE BS SIGNAL 2039A  
LFE RS SIGNAL 127U

CE	BW	WW	YW	Milk	MCE	MWWT	API	TI
4.7	4.7	70.7	98.5	19.3	2	54.7	116.16	65.72

- Star faced Profit Maker son, he's got the look
- Hairy, stylish, mobile, and out of a fundamentally sound cow



101

## LFE BS LEWIS 3064G

1334244 LFE 3064G May 11, 2019

Purebred  
Homo Polled  
Homo Black  
BW - 89  
ADJ WWT - 731  
Jan 15 - 1570

PROFIT  
VCL LKC PROFIT MAKER 604D  
BF MISS CRYSTEEL TANGO  
MR NLC SUPERIOR S6D18  
LFE CROCUS 123X  
LFE BS CROCUS 606R

CE	BW	WW	YW	Milk	MCE	MWWT	API	TI
5.9	3.8	74.5	108.5	26.2	1.9	63.5	123.06	71.29

- Big time stud, Profit Maker son off one of the most proven cows at Lewis Farms
- Dam LFE 123X has a spread sheet of production that is tough to match



LFE Crocus 123X - Dam



• Brothers at work for Hill Top Holdings, Anchor Lazy U, Westman Farms, Double F Cattle, Callioux's and Rendevous Farms to name a few





**102 LFE BS LEWIS 3099G**  
 1334248 LFE 3099G May 16, 2019

Purebred Homo Polled Homo Black  
 BW - 85  
 ADJ WWT - 687  
 Jan 15 - 1600

PROFIT  
**VCL LKC PROFIT MAKER 604D**  
 BF MISS CRYSTEEL TANGO  
 R PLUS 3020A  
**LFE BS SIGNAL 2110C**  
 LFE BS SIGNAL 169Y

CE	BW	WW	YW	Milk	MCE	MWWT	API	TI
7.3	3.2	73.1	107.5	23.2	3	59.8	134.15	72.16



VCL KCL Profit Maker 604D - Sire

- The best aged bull to sell this spring
- Very mobile, very athletic, stout with good angles.
- Dam is a sweet made R Plus Iron Jaw daughter

• He competes in the top 15% of the breed in over 7 categories



**103 LFE BS LEWIS 3035G**  
 1340023 LFE 3035G May 6, 2019

Purebred Homo Polled Homo Black  
 BW - 90  
 ADJ WWT - 785  
 Jan 15 - 1700

PROFIT  
**VCL LKC PROFIT MAKER 604D**  
 BF MISS CRYSTEEL TANGO  
 KBR CHUNK 231Z  
**LFE BS CHARO 2048D**  
 LFE BS CHARO 2044U

CE	BW	WW	YW	Milk	MCE	MWWT	API	TI
5.6	4.6	81.6	118.6	19.7	3.2	60.5	121.72	73.6



LFE Charo 604G - Grand Dam

- Another Profit Maker son that represents the Charo cow family
- Grand Dam LFE 604G is the foundation of our black Simmental program

• His brother sold last spring to Beniuk's near Lac La Biche



**104 LFE BS LEWIS 3069G**  
 1334245 LFE 3069G May 12, 2019

Purebred Polled Black  
 BW - 90  
 ADJ WWT - 740  
 Jan 15 - 1730

PROFIT  
**VCL LKC PROFIT MAKER 604D**  
 BF MISS CRYSTEEL TANGO  
 LFE BISS BLACKADVANCE 426U  
**LFE BS KATARINA 2023Y**  
 LFE BS KATARINA 150U

CE	BW	WW	YW	Milk	MCE	MWWT	API	TI
4.7	5	74.7	103.6	23.8	2	61.2	121.52	70.23



Black Advance 426U - Grand Sire

- Long spined, easy fleshing Profit Maker son
- Brother at work for Terry Hummer of Thorhild



**105****LFE BS LEWIS 3021G**

1329706 LFE 3021G May 1, 2019

Purebred  
Homo Polled  
Homo Black  
BW - 88  
ADJ WWT - 799  
Jan 15 - 1810

LFE GOTHAM 819Y  
**LFE THE RIDDLER 323B**  
LFE BS CHARD 23Y  
MRL THE GOON 121Z  
**LFE BS LARA 2120D**  
LFE T.JLB LARA 2023X



CE	BW	WW	YW	Milk	MCE	MWWT	API	TI
----	----	----	----	------	-----	------	-----	----

6	3.5	85.5	133.4	26.1	2	68.9	133.44	81.39
---	-----	------	-------	------	---	------	--------	-------

- Soggy made Riddler son
- If you're looking for real world cattle that calve easy and grow at big rates. Get yourself a Riddler son



LFE The Riddler 323B - Sire

**106****LFE BS LEWIS 3056G**

1300936 LFE 3056G May 8, 2019

Purebred  
Homo Polled  
Homo Black  
BW - 90  
ADJ WWT - 805  
Jan 15 - 1880

LFE GOTHAM 819Y  
**LFE THE RIDDLER 323B**  
LFE BS CHARD 23Y  
LFE BRING DOWN THE HOUSE  
**LFE PS EVENINGTINGE 2181Z**  
ANGUS/ANGUS



CE	BW	WW	YW	Milk	MCE	MWWT	API	TI
----	----	----	----	------	-----	------	-----	----

6.8	3.4	96.3	152.4	23	4.8	71.2	124.08	82.12
-----	-----	------	-------	----	-----	------	--------	-------

- Dam LFE 2181Z is a half blood female with many daughters retained in our herd. Her son last spring sold to Colton Battrum

**107****LFE PS LEWIS 3012G**

1329704 LFE 3012G June 29, 2019

Percentage  
Homo Polled  
Homo Black  
BW - 80  
ADJ WWT - 791  
Jan 15 - 1790

PROFIT  
**VCL LKC PROFIT MAKER 604D**  
BF MISS CRYSTEEL TANGO  
S A V FINAL ANSWER 0035  
**LFE PS KEEPSAKE 2070Z**  
LFE BS KEEPSAKE 2188X



CE	BW	WW	YW	Milk	MCE	MWWT	API	TI
----	----	----	----	------	-----	------	-----	----

10.8	1.4	72.2	104.1	19.2	6.6	55.3	129.01	70.77
------	-----	------	-------	------	-----	------	--------	-------

- ½ blood female from the Keepsake cow family
- Maternal brother sold last spring to Jake Krawchuk of Glendon, AB



LFE Keepsake 23K - Grand Dam





Lot 108



Lot 109

- Beast Mode sons, that are 3/4 brothers
- Study this pair, both off the Peachy cow family
- Extra hair, style, and substance



LFE Beast Mode 3050 - Sire to Lot 108 & 109

108

**LFE BS LEWIS 3091G**

1300971 LFE 3091G May 14, 2019

Purebred	LFE BS LEWIS 420B
Homo Polled	<b>LFE BEAST MODE 3050</b>
Homo Black	LFE BS OPAL 630X
BW - 90	DRAKE POKER FACE 2X
ADJ WWT - 736	<b>LFE BS JUST PEACHY 78A</b>
Jan 15 - 1740	LFE BISS JUST PEACHY 628X

CE	BW	WW	YW	Milk	MCE	MWWT	API	TI
7.3	3.1	88.4	136.7	24.6	4.7	68.8	129.39	80.65

109

**LFE BS LEWIS 3068G**

1300964 LFE 3068G May 12, 2019

Purebred	LFE BS LEWIS 420B
Homo Polled	<b>LFE BEAST MODE 3050</b>
Hetero Black	LFE BS OPAL 630X
BW - 87	NUG GLOBAL 22B
ADJ WWT - 694	<b>LFE BS JUST PEACHY 125D</b>
Jan 15 - 1700	LFE BISS BS PEACHY 117Y

CE	BW	WW	YW	Milk	MCE	MWWT	API	TI
8	2.7	68.7	112.3	20.6	3.6	55	114.14	65.41



LFE 117Y - Grand Dam to Lot 109



LFE 102W - Grand Dam to Lot 108

110

**LFE BS LEWIS 3050G**

1300926 LFE 3050G May 8, 2019

Purebred	LFE GOTHAM 819Y
Homo Polled	<b>LFE THE RIDDLER 323B</b>
Homo Black	LFE BS CHARD 23Y
BW - 83	HOOKS SHEAR FORCE 38K
ADJ WWT - 684	<b>LFE BS RED N GOOD 150Y</b>
Jan 15 - 1660	LFE RS RED N GOOD 13W

CE	BW	WW	YW	Milk	MCE	MWWT	API	TI
10.2	0.9	85.6	127.4	29.4	7.6	72.2	146.97	85.28

- Old time Production cow, LFE 150Y is a Sheer Force female
- Maternal brothers at work for Bar Hi Ranching and Brent Wagner



**111****LFE BS LEWIS 3214G**

1301524 LFE 3214G June 3, 2019

CE	BW	WW	YW	Milk	MCE	MWWT	API	TI
12.7	1.7	65.8	113.8	21.8	7.5	54.7	126.63	64.72

Purebred  
Homo Polled  
Blue  
BW - 87  
ADJ WWT - 702  
Jan 15 - 1550

LFE BS LEWIS 420B  
LFE BEAST MODE 305D  
LFE BS OPAL 630X  
NCB COBRA 47Y  
LFE BS SUNSHINE 2177B  
LFE BISS LIL SUNSHINE 5Z

- If you're on the hunt for a high end blue bull, this might be one of the best we've raised
- The right ingredients in this pedigree to be a great one
- Moderate at birth, moderate in build and sound on the ground



NCB Cobra 47Y - Mat. Grand Sire



LFE Lil Sunshine 624U - Mat Grand Dam

**112****LFE BS LEWIS 3262G**

1329722 LFE 3262G June 21, 2019

Purebred  
Polled  
Black  
BW - 105  
ADJ WWT - 745  
Jan 15 - 1540

LFE BS LEWIS 420B  
LFE BEAST MODE 305D  
LFE BS OPAL 630X  
MRL THE GOON 121Z  
LFE BS RED HOT 44C  
MUIRHEADS RED HOT 131Z

CE	BW
6.0	3.8
WW	YW
87.8	133.7
Milk	MCE
29.3	3.9
MWWT	TI
73.2	81.36
API	
131.55	

- Stout made hairy Beast Mode son
- Dam is a daughter of a productive Muirhead cow we purchased 7 years ago

**113****LFE BS LEWIS 3031G**

1300903 LFE 3031G May 5, 2019

Purebred  
Polled  
Black  
BW - 78  
ADJ WWT - 780  
Jan 15 - 1580

LFE BS LEWIS 420B  
LFE BEAST MODE 305D  
LFE BS OPAL 630X  
LFE RICH RAY 369Z  
LFE BS GOLDEN GIRL 2022C  
LFE BS GOLDEN GIRL 2064W

CE	BW
8.1	2.5
WW	YW
71.9	116.8
Milk	MCE
20.6	4.5
MWWT	TI
56.6	71.10
API	
129.92	

- Low birth, moderate made, this herd bull would work well in the heifer pen
- Maternal brother at work for Gabriel Lavoie of St. Vincent







# 114 LFE BS LEWIS 3084G

1300913 LFE 3084G May 14, 2019

Purebred Homo Polled Homo Black  
 BW - 90  
 ADJ WWT - 781  
 Jan 15 - 1520

LFE BS LEWIS 420B  
 LFE BEAST MODE 305D  
 LFE BS OPAL 630X  
 LFE BUNDI 300X  
 LFE BS CANADIANIDOL 2065A  
 ALP CANADIAN IDOL 6P

CE	BW
3.7	5.7
WW	YW
99.8	151.6
Milk	MCE
21.2	2.9
MWWT	TI
71.1	83.76
API	
131.50	

- Top grade Beast Mode son, this is the 3rd sale we have offered a large population of Beast Mode sired calves, the customer feedback has been exceptional on them.
- Moderate birth and size, and retain females off this Beast Mode son



# 115 LFE BS LEWIS 3219G

1301529 LFE 3219G June 4, 2019

Purebred Homo Polled Homo Black  
 BW - 88  
 ADJ WWT - 662  
 Jan 15 - 1460

LFE BS LEWIS 420B  
 LFE BEAST MODE 305D  
 LFE BS OPAL 630X  
 LFE THE RIDDLER 323B  
 LFE BS AMBER 2006D  
 LFE RS AMBER 2137Z

CE	BW
9.6	2.2
WW	YW
79	132.6
Milk	MCE
19.5	5.3
MWWT	TI
59	73.91
API	
124.74	

- High end Beast Mode son
- Moderate in stature, stout based, big chest and big feet





# 116 LFE BS LEWIS 3160G

1301191 LFE 3160G May 24, 2019

Purebred  
Homo Polled  
Hetero Black  
BW - 81  
ADJ WWT - 811  
Jan 15 - 1700

LFE BS LEWIS 420B  
**LFE BEAST MODE 305D**  
LFE BS OPAL 630X  
LFE RANCHER 396U  
**LFE BS FLORENCE 2126Y**  
LFE BS FLORENCE 2112U

CE	BW
11.8	2.3
WW	YW
72.9	113
Milk	MCE
16.3	6.5
MWWT	TI
52.8	65.59
API	
116.51	



# 117 LFE BS LEWIS 3164G

1301203 LFE 3164G May 24, 2019

Purebred  
Polled  
Black  
BW - 89  
ADJ WWT - 671  
Jan 15 - 1400

LFE BS LEWIS 420B  
**LFE BEAST MODE 305D**  
LFE BS OPAL 630X  
REMINGTON ON TARGET 2S  
**LFE BS MISS 2113U**  
SHOESTRING FIGURE'S K424

CE	BW
5.4	4.6
WW	YW
72.6	124.3
Milk	MCE
20.5	3.7
MWWT	TI
56.8	66.32
API	
121.65	



# 118 LFE BS LEWIS 3283G

1329724 LFE 3283G June 29, 2019

Purebred  
Homo Polled  
Hetero Black  
BW - 90  
ADJ WWT - 804  
Jan 15 - 1500

LFE BS LEWIS 420B  
**LFE BEAST MODE 305D**  
LFE BS OPAL 630X  
LFE GOTHAM 819Y  
**LFE BS HEARTS 2143B**  
LFE STS HEARTONFIRE 2107Y

CE	BW
5	4
WW	YW
71	116.2
Milk	MCE
20.8	2.3
MWWT	TI
56.3	62.61
API	
109.22	



# 119 LFE BS LEWIS 3185G

1301353 LFE 3185G May 29, 2019

Purebred  
Homo Polled  
Homo Black  
BW - 97  
ADJ WWT - 730  
Jan 15 - 1520

LFE BS LEWIS 420B  
**LFE BEAST MODE 305D**  
LFE BS OPAL 630X  
MRL THE GOON 121Z  
**LFE BS NICKIE 2049C**  
LFE BISS NICKIE 2056Z

CE	BW
3.4	4.8
WW	YW
77.8	126.5
Milk	MCE
21	0.1
MWWT	TI
59.9	68.16
API	
115.35	

# 120 LFE BS LEWIS 3094G

1300981 LFE 3094G May 14, 2019

Purebred  
Polled  
Black  
BW - 91  
ADJ WWT - 729  
Jan 15 - 1400

LFE BS LEWIS 420B  
**LFE BEAST MODE 305D**  
LFE BS OPAL 630X  
LFE BLACK LAKOTA 385W  
**LFE BS JANE 2034Z**  
LFE BS MISS 2116U

CE	BW
9.9	2
WW	YW
66	110.3
Milk	MCE
16.1	4.5
MWWT	TI
49.1	65.56
API	
125.25	





**121** **LFE BS LEWIS 3127G**  
 1301073 LFE 3127G May 20, 2019

Purebred Homo Polled Homo Black  
 BW - 84  
 ADJ WWT - 782  
 Jan 15 - 1600

WHEATLAND BULL 680S  
**RF SLASH 323A**  
 RF SHEEZA HUSSEY TOO 9U  
 LFE GOTHAM 819Y  
**LFE BS KEEPSAKE 41C**  
 LFE BS KEEPSAKE 605Y

CE	BW	WW	YW	Milk	MCE	MWWT	API	TI
4.8	4.8	91.6	136.5	22.2	1.9	68	121.96	79.49

- Better of the two Slash sons, soggy, round muscled bull that will add pounds to any program
- We acquired Slash from Westman Farms for a stint in our summer program
- Low birth bull out of a tremendous cow and backed by the great Keepsake cow family



**122** **LFE BS LEWIS 3115G**  
 1301001 LFE 3115G May 18, 2019

Purebred Homo Polled Hetero Black  
 BW - 82  
 ADJ WWT - 654  
 Jan 15 - 1560

WHEATLAND BULL 680S  
**RF SLASH 323A**  
 RF SHEEZA HUSSEY TOO 9U  
 LFE BELLAGIO 529X  
**LFE BS SHELBY 2061A**  
 LFE RS SHELBY 2120X

CE	BW	WW	YW	Milk	MCE	MWWT	API	TI
8.6	3.7	68.2	108	20.9	2.4	55	128.42	67.35



LFE Block Buster 3011C - Mat. Bro.

- LFE Blockbuster is a brother to the dam, Grand Dam LFE 2120X is one of the best red cows in the summer program
- Maternal brothers at work for Galas Stock Farm and Chad Meunier

new to the Herd



**Kolter John Lewis**  
 Born on May 29, 2020  
 6 lbs @ 02 - 21 inches

Proud Parents Kyle & Alexis Lewis and Big Brothers Dysen & Rylan

**123** **LFE BS LEWIS 3029G**  
 1300900 LFE 3029G May 5, 2019

Purebred Polled Black  
 BW - 81  
 ADJ WWT - 738  
 ADJ YWT 1430

WHEATLAND BULL 680S  
**RF SLASH 323A**  
 RF SHEEZA HUSSEY TOO 9U  
 LFE SI 815Y  
**LFE BS KATARINA 2174C**  
 LFE BS KATARINA 242T

CE	BW	WW	YW	Milk	MCE	MWWT	API	TI
7.2	0.9	58.8	80.3	24.7	2.6	54.1	116.99	63.38



**124****LFE BS LEWIS 3183G**

1301350 LFE 3183G May 28, 2019

CE	BW	WW	YW	Milk	MCE	MWWT	API	TI
3.8	5.1	66.6	103.8	22.7	1.4	56	120.81	64.32

Purebred  
Homo Polled  
Homo Black  
BW - 87  
ADJ WWT - 778  
Jan 15 - 1520

LFE COMMISSIONER 811Z  
**LFE CHIEF 805B**  
LFE STS AN 611Y  
LFE CRUSH 301X  
**LFE BS KEELY 2256B**  
LFE BS 75% 2055U

- We wish we had more Chief sons on offer this spring
- Brother last spring sold for \$54k to Crossroad Farms



LFE Chief 805B - Sire



LFE Middle Man 3127F - Brother

**125****LFE BS LEWIS 3186G**

1301355 LFE 3186G May 29, 2019

Purebred  
Homo Polled  
Black  
BW - 94  
ADJ WWT - 727  
Jan 15 - 1620

LFE COMMISSIONER 811Z  
**LFE OFFICER 302D**  
LFE BS DAKOTA 631S  
LFE THE RIDDLER 323B  
**LFE BS DAKOTA COAL 28D**  
LFE BS DAKOTA COAL 124Y

CE	BW
1.5	4.3
WW	YW
81	132
Milk	MCE
23.4	0.4
MWWT	TI
63.9	74.25
API	119.96

- Sire LFE Officer 302D sold to Kelly Battrum in the 2017 Sale
- Big statured baldy bull backed by many generations of Dakota Coal cows



LFE Officer 302D - Sire

**126****LFE BS LEWIS 3173G**

1301220 LFE 3173G May 26, 2019

Purebred  
Homo Polled  
Homo Black  
BW - 84  
ADJ WWT - 656  
Jan 15 - 1520

LFE BS LEWIS 420B  
**LFE BEAST MODE 305D**  
LFE BS OPAL 630X  
LFE BUNDI 300X  
**LFE BS SHEILA ANN 183B**  
LFE BS SHEILA ANN 21X

CE	BW
12.2	4.2
WW	YW
77	119.5
Milk	MCE
17.2	5.9
MWWT	TI
55.7	66.77
API	122.33

**127****LFE BS LEWIS 3170G**

1301214 LFE 3170G May 26, 2019

Purebred  
Polled  
Black  
BW - 86  
ADJ WWT - 830  
Jan 15 - 1750

LFE COMMISSIONER 811Z  
**LFE OFFICER 302D**  
LFE BS DAKOTA 631S  
DRAKE POKER FACE 2X  
**LFE BS JAMIE 2003Z**  
LFE BS JAMIE 76W

CE	BW
3.7	6.3
WW	YW
83.7	135.1
Milk	MCE
20.8	2.1
MWWT	TI
62.7	69.34
API	107.6





**128 LFE BS LEWIS 3146G**  
 1301179 LFE 3146G May 22, 2019

Purebred Homo Polled Hetero Black  
 BW - 92  
 ADJ WWT - 753  
 Jan 15 - 1700

LFE TRESTLE 323Z  
 LFE HIGH TIDE 328E  
 LFE RS MIA 109Y  
 MRL THE GOON 121Z  
 LFE BS AN 70C  
 LFE STS BS AN 80Y

CE	BW	WW	YW	Milk	MCE	MWWT	API	TI
2.7	5.8	90.9	135.7	29.2	-0.4	74.7	128.22	80.84

- Sire LFE High Tide sold to Hayes Land and Cattle in the 2018 Sale
- LFE 3146G is a red carrier with all the bells and whistles
- Dam LFE 70C is top end Goon daughter, 1/2 blood calf of hers sold to Gabriel Lavoie last spring



Springsteen - Mat.1 Grand Sire

**129 LFE BS LEWIS 3134G**  
 1301108 LFE 3134G May 20, 2019

Purebred Homo Polled Black  
 BW - 86  
 ADJ WWT - 700  
 Jan 15 - 1680

MRL EL TIGRE 52Z  
 WLB BIG NORTHERN 52Z 4161D  
 WLB 156S BELLE 3552W  
 LFE SPRINGSTEEN 449Y  
 LFE RS MOLLY 2053C  
 LFE RS MS LEWIS 47T

CE	BW	WW	YW	Milk	MCE	MWWT	API	TI
-0.2	5.5	86.9	117.4	24.5	-2.3	68	115.64	74.29

- Sire WLB Big Northern was acquired from WLB in 2017. He adds a twist in pedigree
- Red carrier, Dam is a red Springsteen daughter combining two of the greatest red bulls produced here - Springsteen and The Rock



WLB Big Northern - Sire



**130 LFE BS LEWIS 3078G**  
 1300907 LFE 3078G May 12, 2019

Purebred Polled Black  
 BW - 80  
 ADJ WWT - 758  
 Jan 15 - 1640

LFE POWER WAGON 365A  
 LFE HEAVY DUTY 3306D  
 LFE BS FORTUNE 41Y  
 LFE THE DARK NIGHT 350U  
 LFE BS FORTUNE 166Z  
 LFE FORTUNE 158P

CE	BW	WW	YW	Milk	MCE	MWWT	API	TI
1.1	5.4	72.3	103.7	21.8	-1.4	58	96.46	61.95



LFE Heavy Duty 3306D - Sire

- Sire LFE Heavy Duty was purchased by Hayes Land and Cattle in the 2017 sale
- Heavy Duty is the best Power Wagon son produced to date



# 131 LFE BS LEWIS 3268G

1329718 LFE 3268G June 24, 2019

Purebred  
Homo Polled  
Hetero Black  
BW - 87  
ADJ WWT - 751  
Jan 15 - 1500

LFE BS LEWIS 420B  
LFE HOOVER 847D  
LFE BS TINA 19Z  
LFE COMMANDER 452Z  
LFE RS SHEILA 155B  
LFE RS SHEILA 145Z

CE	BW	WW	YW	Milk	MCE	MWWT	API	TI
1.8	4.9	82.6	124.1	28.7	0.1	70	133.04	78.04

- First crop of Hoover sons to sell.
- Grand Dam KWA 11W was a cow purchased from Ashworth Farm and Ranch. She has been a cornerstone female in our red division



KWA Ms Rock 11W - Grand Dam

- Black baldie bull with agility, flexibility, and a cool look



# 132 LFE BS LEWIS 3193G

1301362 LFE 3193G May 30, 2019

Purebred  
Polled  
Hetero Black  
BW - 86  
ADJ WWT - 793  
Jan 15 - 1730

LFE BS LEWIS 420B  
LFE HOOVER 847D  
LFE BS TINA 19Z  
KJLI THE ROCK 1L  
LFE BS KATARINA 150U  
LFE KATARINA 126P

CE	BW	WW	YW	Milk	MCE	MWWT	API	TI
0.8	5.9	76.9	110	29	0.4	67.5	127.19	71.78

- Modest birth weight, Dam is a hard working 13 year old Rock daughter that is still in production
- Maternal brothers at work for Lazor Cattle, Double F and Decka Farms



LFE The Rock 1L - Mat. Grand Sire



# 133 LFE BS LEWIS 3147G

1301180 LFE 3147G May 22, 2019

Purebred  
Homo Polled  
Hetero Black  
BW - 89  
ADJ WWT - 800  
Jan 15 - 1750

LFE BS LEWIS 420B  
LFE HOOVER 847D  
LFE BS TINA 19Z  
LFE DREAMING RED 503S  
LFE RS ULTIMATE 2058Z  
TRI-ADD ULTIMATE 15G 55M

CE	BW	WW	YW	Milk	MCE	MWWT	API	TI
6.4	5.9	88.9	134.9	26.4	3.5	70.9	120.31	76.78

- Smooth in his type. Proud herd bull with more chest and base width
- Red carrier Hoover son



LFE Hoover 847D - Sire







**134 LFE RS LEWIS 3102G**  
 1300986 LFE 3102G May 17, 2019

Purebred Polled  
 Hetero Black  
 BW - 91  
 ADJ WWT - 792  
 Jan 15 - 1740

LFE VIPER 455U  
 NCB COBRA 47Y  
 NCB MISS DREAM 22T  
 LFE RANCHER 396U  
 LFE BISS DREAMLADY 2201Z  
 BISS BILLY JO 33P

CE	BW	WW	YW	Milk	MCE	MWWT	API	TI
9	2	78	112.6	26.6	4.8	65.6	120.85	73.63



LFE Blackadvance - Brother to Dam

- Cobra son! Direct Cobras are hard to come by; the breed legend is now deceased with no semen available
- Soggy made, superior foot quality, these bulls are at a different level
- Brother to dam LFE Black Advance doesn't hurt this bulls pedigree



**135 LFE BS LEWIS 3092G**  
 1300973 LFE 3092G May 14, 2019

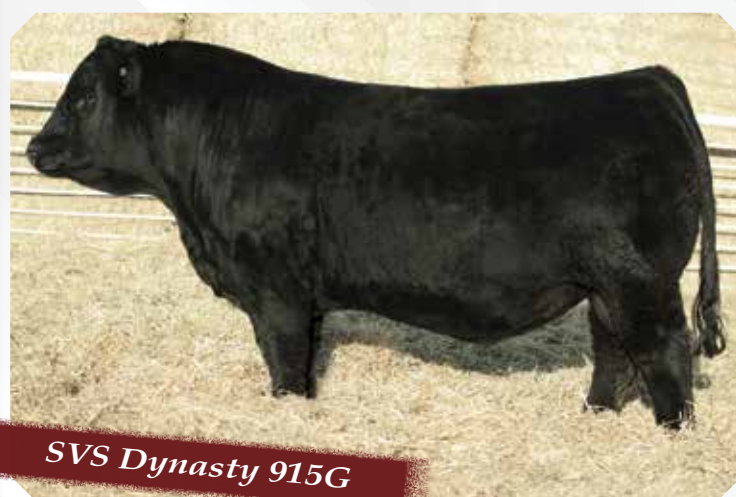
Purebred Homo Polled  
 Hetero Black  
 BW - 83  
 ADJ WWT - 720  
 Jan 15 - 1650

LFE VIPER 455U  
 NCB COBRA 47Y  
 NCB MISS DREAM 22T  
 LFE POWER WAGON 365A  
 LFE BS MEL 78D  
 LFE BS MEL 163Y

CE	BW	WW	YW	Milk	MCE	MWWT	API	TI
6.5	3.9	78.3	117.4	23.8	4.1	63	125.02	71.78

- Longer made, added extension through the front third of the animal
- Cobra son - might be the last set of direct Cobra sons to sell
- Maternal brother purchased by Woodwind Ranching

*New Sire*



SVS Dynasty 915G

**137 LFE BS LEWIS 3108G**  
 1300995 LFE 3108G May 18, 2019

Purebred Homo Polled  
 Hetero Black  
 BW - 83  
 ADJ WWT - 681  
 Jan 15 - 1440

LFE BS LEWIS 420B  
 LFE HOOVER 847D  
 LFE BS TINA 19Z  
 LFE BOUNTY 3118Z  
 LFE BS PEPPER 2132C  
 LFE BS PEPPER 2076A

CE	BW	WW	YW	Milk	MCE	MWWT	API	TI
6.3	5.2	76.8	110.8	24.4	3.1	62.8	132.14	74.32

**136 LFE BS LEWIS 3242G**  
 1301558 LFE 3242G June 12, 2019

Purebred Homo Polled  
 Black  
 BW - 90  
 ADJ WWT - 655  
 Jan 15 - 1600

LFE BS LEWIS 420B  
 LFE HOOVER 847D  
 LFE BS TINA 19Z  
 LFE COMMISSIONER 811Z  
 LFE BS DAKOTA COAL 625B  
 LFE BS DAKOTA COAL 39X

CE	BW	WW	YW	Milk	MCE	MWWT	API	TI
4	7.8	90.6	137.4	22.2	1.2	67.5	138.82	81.92



138

**LFE PS LEWIS 3152G**

133986Z LFE 3152G May 23, 2019

Percentage  
Homo Polled  
Homo Black  
BW - 85  
ADJ WWT - 684  
Jan 15 - 1500

LFE BOUNTY 3118Z  
**LFE CASH 386D**  
LFE BS FIRSTBASE 39B  
NCB COBRA 47Y  
**LFE BS TRIXIE 2067E**  
LFE BS TRIXIE 606X

CE	BW
9	3.7
WW	YW
77.2	113.7
Milk	MCE
29.5	5.5
MWWT	TI
68.1	73.37
API	
125.96	



- Cash sons come easy at birth, most of the Cash progeny are off first calf heifers
- Attractive baldy with extra shape and tremendous feet
- Dam is a maternal Cobra daughter

139

**LFE BS LEWIS 3253G**

1340020 LFE 3253G June 17, 2019

Purebred  
Homo Polled  
Homo Black  
BW - 82  
ADJ WWT - 720  
Jan 15 - 1480

LFE BOUNTY 3118Z  
**LFE CASH 386D**  
LFE BS FIRSTBASE 39B  
LFE POWER WAGON 365A  
**LFE BS DREAMLADY 2267E**  
LFE BISS DREAMLADY 154A

CE	BW
8.6	4
WW	YW
74.1	113.2
Milk	MCE
25.1	3.4
MWWT	TI
62.2	70
API	
123.2	



- Easy calving Cash son that is safe for second calvers
- Big ribbed bull with more hair and style

140

**LFE BS LEWIS 3230G**

1301543 LFE 3230G June 7, 2019

Purebred  
Homo Polled  
Homo Black  
BW - 80  
ADJ WWT - 671  
Jan 15 - 1490

LFE BOUNTY 3118Z  
**LFE CASH 386D**  
LFE BS FIRSTBASE 39B  
MRL THE GOON 121Z  
**LFE BS CHARD 2216E**  
LFE BS CHARD 2117A

CE	BW
5.6	4.2
WW	YW
73.9	106.3
Milk	MCE
28.4	1.8
MWWT	TI
65.4	68.75
API	
117.68	



- Moderate Cash son with a balanced EPD profile
- Star faced bull that will moderate his progeny

141

**LFE BS LEWIS 3285G**

1340022 LFE 3285G June 30, 2019

Purebred  
Homo Polled  
Homo Black  
BW - 82  
ADJ WWT - 763  
Jan 15 - 1470

LFE BOUNTY 3118Z  
**LFE CASH 386D**  
LFE BS FIRSTBASE 39B  
LFE THE RIDDLER 323B  
**LFE BS TORI 2075E**  
LFE BS TORI 2070B

CE	BW
9.2	3.1
WW	YW
76.8	116.7
Milk	MCE
25.3	4.7
MWWT	TI
63.7	74.03
API	
125.49	



- Cash x Riddler combination
- Low birth, easy on heifers or second calvers



# Red Simmental Yearling Bulls

RED SIMMENTAL YEARLING

## Reference Sires



LFE Amber Jack 385E



MAF Stummer 95E



SVS Tycoon 841F



LFE Block Buster 3011C

200

## LFE RS LEWIS 317H

1326816 LFE 317H Jan. 3, 2020

Purebred  
Homo Polled  
Red  
BW - 90  
ADJ WWT - 920  
ADJ YWT - 1494

SVS BROOKS 669D  
SVS TYCOON 841F  
SVS RED ANNIE 411B  
LFE ROCHFORD 3013T  
LFE RS AMBER 61Y  
LFE RS AMBER 205T

- Power red bull by Tycoon
- Maternal brother sold last spring to Rendezvous Farms
- LFE 61Y is a productive Amber daughter that never misses an opportunity to raise a good one

CE	BW	WW	YW	Milk	MCE	MWWT	API	TI
5.6	4.8	98.9	151.6	30.4	1.8	79.9	125.57	81.49



LFE RA Lewis 302G - Maternal Brother



LFE RS Amber 61Y - Dam



LFE 317H with Dam LFE 61Y



**201****LFE RS LEWIS 305H**

1339789 LFE 305H Jan. 1, 2020

Purebred  
Homo Polled  
Red  
BW - 99  
ADJ WWT - 797  
ADJ YWT - 1423

SVS BROOKS 669D  
**SVS TYCOON 841F**  
SVS RED ANNIE 411B  
LFE BISS RS LEWIS 314Y  
**KHG BROOKE 2D**  
KHG MAKENNA 199B

CE	BW	WW	YW	Milk	MCE	MWWT	API	TI
8.4	3.2	84.6	128.6	25.8	3.2	68.1	122.81	74.57



SVS Tycoon 841F - Sire



KHG Brooke 2D - Dam



- Heavy haired, moderate made Tycoon
- Dam KHG 2D was purchased in the fall of 2018 from Westgold Farms

**202****LFE RS LEWIS 360H**

1327194 LFE 360H Jan. 13, 2020

Purebred  
Homo Polled  
Red  
BW - 103  
ADJ WWT - 779  
ADJ YWT - 1329

SVS BROOKS 669D  
**SVS TYCOON 841F**  
SVS RED ANNIE 411B  
LFE BS LEWIS 322U  
**LFE RS KAT 88Z**  
LFE BS KAT 71X

CE	BW	WW	YW	Milk	MCE	MWWT	API	TI
4.5	5	86.5	129.7	25.3	0	68.6	114.7	74.19

- Moderate and very stout
- Stubby Dam is a low set barrel. Her Razor son sold to Yellow Rose and Hampton Simmentals in the 2019 Sale



LFE BS Kat 71X - Grand Dam

**203****LFE RS LEWIS 316H**

1326815 LFE 316H Jan. 1, 2020

Purebred  
Polled  
Red  
BW - 104  
ADJ WWT - 809  
ADJ YWT - 1359

SVS BROOKS 669D  
**SVS TYCOON 841F**  
SVS RED ANNIE 411B  
LFE DREAMING RED 503S  
**LFE RS PEARL 41Z**  
LFE RRS PEARL 617U

CE	BW	WW	YW	Milk	MCE	MWWT	API	TI
5.1	4.6	85.4	124.1	27.7	0.4	70.4	116.81	73.54

- Smooth made, dark cherry red Tycoon
- LFE Dam 41Z comes from a long line of top end Pearl females, she puts forth a competitive son every spring



LFE RS Pearl 41Z - Dam





204

# LFE RS LEWIS 851G

1326763 LFE 851G Dec. 29, 2019

CE	BW	WW	YW	Milk	MCE	MWWT	API	TI
3.1	5.7	82.1	120	22.7	-0.1	63.8	108.45	68.19

Purebred  
Homo Polled  
Red  
BW - 95  
ADJ WWT - 820  
ADJ YWT - 1545

LFEISS BLACKADVANCE 426U  
**LFE BLOCKBUSTER 3011C**  
LFE RS SHELBY 2120X  
LFE VEGAS 3145A  
**LFE RS COCOA 658C**  
LFE RS COCOA 107X

- One of the most complete individuals in the offering
- Heavy, dark hair, big foot, well balanced, soft muscled
- This Blockbuster son has extra mass, he is sound and athletic
- His Vegas sired Dam is a standout cow, her Amber Jack son was a sale feature last spring selling to Crocus Simmentals



LFE RA Lewis 850F - Maternal Brother



LFE Cocoa 658C - Dam

205

# LFE BS LEWIS 839G

1326722 LFE 839G Dec. 28, 2019

CE	BW	WW	YW	Milk	MCE	MWWT	API	TI
4.6	4.4	83.4	116.4	22.9	1.2	64.6	116.32	72.77

Purebred  
Homo Polled  
Red  
BW - 96  
ADJ WWT - 855  
ADJ YWT - 1567

LFEISS BLACKADVANCE 426U  
**LFE BLOCKBUSTER 3011C**  
LFE RS SHELBY 2120X  
LFE DREAMING RED 503S  
**LFE KJLI DREAMLADY 153Z**  
KJLI ANNA 71P

- Blockbuster son that will add performance and pounds to any program
- Dreamlady Dam 153Z is responsible for some of the best young red cows on the farm (LFE 643C and LFE 643B)
- Full sister to dam was sold in Checkers 10 years ago to the Fornwald Family. Calf that came in Dam was MAF Horizon



MAF Hozizon 7Y - Maternal Brother



LFE 79W - Full Sister to Dam



**206****LFE RS LEWIS 812G**

1326607 LFE 812G Dec. 24, 2019

Purebred  
Homo Polled  
Red  
BW - 106  
ADJ WWT - 864  
ADJ YWT - 1451

LFE BISS BLACKADVANCE 426U  
LFE BLOCKBUSTER 3011C  
LFE RS SHELBY 2120X  
NCB COBRA 47Y  
LFE RS AMBER 2153D  
LFE RS AMBER 2062A

CE	BW	WW	YW	Milk	MCE	MWWT	API	TI
3.5	6.3	92.2	131.6	27.9	1.1	74	107.1	72.97

- Long made, wide sprung, dark red
- Tremendous Pedigree for performance, longevity and maternal prowess

**207****LFE RS LEWIS 420H**

1330500 LFE 420H Feb. 2, 2020

Purebred  
Homo Polled  
Red  
BW - 79  
ADJ WWT - 813  
ADJ YWT - 1488

LFE BLOOD RUSH 833A  
LFE BLOOD RUSH 3111E  
LFE RS PEARL 2120B  
LFE RAZOR 3067C  
LFE RS AMBER 605E  
LFE RS AMBER 166B

CE	BW	WW	YW	Milk	MCE	MWWT	API	TI
9.8	2.2	66.9	99.8	28.8	2.8	62	128.97	68.97

- My pick of the red Calving-ease bulls
- Low birth, big growth, soft made, dark red, with extra hip and muscle shape
- Will be collecting prior to the sale for in herd use



LFE Blood Rush 833A - Grand Sire

**Elite Agri Services Ltd - The Tolsma Family**

We are farming company based out of Millet, Alberta. Currently we have cattle and grain, however we specialize in custom farming. This includes seeding, spraying, and custom silage throughout Alberta and Saskatchewan. We have been buying bulls from the Lewis Family for years now. We run an Angus commercial herd and feel the their black Simmental bull really complement our cow herd. We background the calves and see a remarkable difference with the Simmental influence. Our relationship with Lewis farms is important to our farms success.

The Tolsma Family







**208** **LFE RS LEWIS 375H**  
 1327211 LFE 375H Jan. 15, 2020

Purebred Homo Polled Red BW - 90 ADJ WWT - 789 ADJ YWT - 1415	LFE BLOOD RUSH 833A LFE AMBER JACK 385E LFE RS SHEILA 152B LFE BACARDI 462S LFE RS JULI 78Y LFE RS JULI 152U
------------------------------------------------------------------------------	-----------------------------------------------------------------------------------------------------------------------------

CE	BW	WW	YW	Milk	MCE	MWWT	API	TI
5.2	3.6	67.2	102.8	34.5	-0.4	68.1	121.26	64.69



LFE RS Juli 78Y - Dam



LFE RS Lewis 873F - Mat. Brother

- LFE Dam 78Y is a crowd favorite in the donor squad, her sons sold last spring to Neil Howe and Hayes land and Cattle
- Her maternal contribution to our red cow herd is endless. 6 daughters retained in the herd. Daughter LFE 650B's highlight son sells as Lot 305



**209** **LFE RS LEWIS 860G**  
 1326769 LFE 860G Dec. 30, 2019

Purebred Homo Polled Red BW - 107 ADJ WWT - 798 ADJ YWT - 1385	LFE BLOOD RUSH 833A LFE AMBER JACK 385E LFE RS SHEILA 152B NCB RED SUSPECT 30S LFE RS AMBER 610A LFE RS AMBER 205T
-------------------------------------------------------------------------------	-----------------------------------------------------------------------------------------------------------------------------------

CE	BW	WW	YW	Milk	MCE	MWWT	API	TI
0	7.9	83	128.4	26.2	-4.4	67.7	107.02	66.26



LFE RS Amber 610A - Dam



LFE RS Lewis 857F - Full Brother

- Full brother sold last spring for \$107,500 to Westgold Farms
- Long bodied, bigger framed, packed full of muscle



**210** **LFE RS LEWIS 332H**  
 1326867 LFE 332H Jan. 6, 2020

Purebred Homo Polled Red BW - 99 ADJ WWT - 784 ADJ YWT - 1309	LFE BLOOD RUSH 833A LFE AMBER JACK 385E LFE RS SHEILA 152B LFE RED RIDGE 809W LFE RS AMBER 92Z LFE RS AMBER 114W
------------------------------------------------------------------------------	---------------------------------------------------------------------------------------------------------------------------------

CE	BW	WW	YW	Milk	MCE	MWWT	API	TI
0.9	6	75	113.5	30.8	-2.7	68.3	112.33	64.69



LFE RS Amber 92Z - Dam

- Easy fleshing round made Amber Jack son
- LFE Dam 92Z is a sweet made Amber daughter
- This guy has a white flank and white sock - FYI
- Maternal brothers at work for Ray Watmough and Kelly Battrum



**211****LFE RS LEWIS 373H**

1327207 LFE 373H Jan. 15, 2020

CE	BW	WW	YW	Milk	MCE	MWWT	API	TI
3.6	6.6	90.2	131.6	28.7	0.2	73.8	113.25	73.14

Purebred  
Homo Polled  
Red  
BW - 98  
ADJ WWT - 880  
ADJ YWT - 1530

LFE BLOOD RUSH 833A  
LFE AMBER JACK 385E  
LFE RS SHEILA 152B  
LFE TRESTLE 323Z  
LFE RS NUG 2195D  
LFE RS NUG 2025A

- One of the stoutest, soggiest red bulls in the offering
- LFE Dam 2195D is a middle framed Trestle daughter that is strong footed and good udder



LFE 373H with Dam LFE 2195D



LFE 373H with Dam LFE 2195D



LFE Amber Jack 385E - Sire



RED SIMMENTAL YEARLING

**212****LFE RS LEWIS 370H**

1327205 LFE 370H Jan. 15, 2020

CE	BW	WW	YW	Milk	MCE	MWWT	API	TI
4.4	4.1	76.4	114.9	26.3	0.2	64.5	123.06	69.08

Purebred  
Polled  
Red  
BW - 92  
ADJ WWT - 818  
ADJ YWT - 1343

LFE BLOOD RUSH 833A  
LFE AMBER JACK 385E  
LFE RS SHEILA 152B  
LFE DREAMING RED 503S  
LFE RS FIRSTBASE 113Z  
LFE RS FIRSTBASE 61R

CE	BW	WW	YW	Milk	MCE	MWWT	API	TI
4.4	4.1	76.4	114.9	26.3	0.2	64.5	123.06	69.08

**213****LFE RS LEWIS 808G**

1326603 LFE 808G Dec. 23, 2019

CE	BW	WW	YW	Milk	MCE	MWWT	API	TI
5.2	3.2	80.7	115.2	23.8	0.9	64.2	114.29	73.36

Purebred  
Polled  
Red  
BW - 91  
ADJ WWT - 829  
ADJ YWT - 1429

CNS DREAM ON L186  
LFE DREAMING RED 503S  
LFE CHARD 56K  
RUST HENN RAMBLER 6003  
LFE RS KEEPSAKE 27F  
LFE RS KEEPSAKE 633C

CE	BW	WW	YW	Milk	MCE	MWWT	API	TI
5.2	3.2	80.7	115.2	23.8	0.9	64.2	114.29	73.36

**214****LFE RS LEWIS 339H**

1326876 LFE 339H Jan. 7, 2020

CE	BW	WW	YW	Milk	MCE	MWWT	API	TI
7.2	4.4	87.9	121.9	29.1	3.4	73.1	108.94	74.47

Purebred  
Homo Polled  
Red  
BW - 92  
ADJ WWT - 894  
ADJ YWT - 1331

WS PILGRIM H182U  
RUST HENN RAMBLER 6003  
KAPPES SADIE M166  
WFL WESTCOTT 24C  
LFE RS AMBER 89F  
LFE RS AMBER 205T

CE	BW	WW	YW	Milk	MCE	MWWT	API	TI
7.2	4.4	87.9	121.9	29.1	3.4	73.1	108.94	74.47

**215****LFE RS LEWIS 309H**

1326788 LFE 309H Jan. 1, 2020

CE	BW	WW	YW	Milk	MCE	MWWT	API	TI
7.3	3.8	78.7	109.1	24.2	2.6	63.6	107.36	69.42

Purebred  
Homo Polled  
Red  
BW - 88  
ADJ WWT - 787  
ADJ YWT - 1400

WS PILGRIM H182U  
RUST HENN RAMBLER 6003  
KAPPES SADIE M166  
WFL WESTCOTT 24C  
LFE RS PEARL 32F  
LFE RS PEARL 26B

CE	BW	WW	YW	Milk	MCE	MWWT	API	TI
7.3	3.8	78.7	109.1	24.2	2.6	63.6	107.36	69.42



**216****LFE RS LEWIS 333H**

1326868 LFE 333H Jan. 6, 2020

CE BW WW YW Milk MCE MWWT API TI

4.9 5.3 89.3 135.6 22.4 2.7 67.1 129.25 79.19

Purebred  
Homo Polled  
Red  
BW - 93  
ADJ WWT - 839  
ADJ YWT - 1465

LFE BS LEWIS 420B  
**LFE HOOVER 847D**  
LFE BS TINA 19Z  
LFE TRIUMPH 816A  
**LFE BS KATARINA 97E**  
LFE BS KATARINA 146X



- Cool red baldy off two black parents
- Heavy muscled, proud through head and neck



LFE Hoover 847D - Sire



LFE 333H with Dam LFE 97E

RED SIMMENTAL YEARLING



LFE 1Z - Dam

**217****LFE RS LEWIS 346H**

1326930 LFE 346H Jan. 10, 2020

Purebred  
Homo Polled  
Red  
BW - 80  
ADJ WWT - 767  
ADJ YWT - 1429

LFE BS LEWIS 420B  
**LFE HOOVER 847D**  
LFE BS TINA 19Z  
LFE HOT TOPIC 312W  
**LFE BS READY TO TANGO 1Z**  
LFE READY TO TANGO 609S

CE	BW
6.6	3.3
WW	YW
76.8	118.3
Milk	MCE
25.7	3.6
MWWT	TI
64.1	73.05
API	
125.49	

- Lighter color, stout made
- LFE Dam 1Z is a member of the Crocus cow family, we have this cow ranked very high

**218****LFE RS LEWIS 358H**

1326940 LFE 358H Jan. 12, 2020

Purebred  
Polled  
Red

BW - 90  
ADJ WWT - 800  
ADJ YWT - 1413

IPU RED WESTERN 49X  
**KWA FLYF RED MOUNTAIN 16Z**  
KWA MS ROCK 14X  
KOP SPARTAN 113A  
**LFE RS CARROLL 116F**  
R.JY CARROLL 50A

CE	BW
7.3	3.4
WW	YW
74.5	113.9
Milk	MCE
29.6	3.7
MWWT	TI
66.9	77.27
API	
136.13	





**219****LFE RS LEWIS 308H**

1326787 LFE 308H Jan. 1, 2020

CE	BW	WW	YW	Milk	MCE	MWWT	API	TI
7.7	1.4	64.9	101.1	22.2	1.8	54.7	133.07	73.68

Purebred  
Homo Polled  
Red  
BW - 86  
ADJ WWT - 714  
ADJ YWT - 1340

IPU RED WESTERN 49X  
**KWA FLYF RED MOUNTAIN 16Z**  
KWA MS ROCK 14X  
WFL ABSOLUTE 51Y  
**LFE RS DREAMLADY 54F**  
LFE RS DREAMLADY 643C

- Soft made, low birth Red Mountain son that is made for first and second calvers
- Maternal parentage is second to none. Backed by many great cows for 5-6 generations



LFE Vegas - Maternal Grand Sire



KWA FLYF Red Mountain 16Z



LFE Dreamlady 79W - Grand Dam



RED SIMMENTAL YEARLING

**220****LFE RS LEWIS 301H**

1326779 LFE 301H Jan. 1, 2020

Purebred  
Homo Polled  
Red  
BW - 76  
ADJ WWT - 808  
ADJ YWT - 1382

LFE VIPER 455U  
**NCB COBRA 47Y**  
NCB MISS DREAM 22T  
WFL ABSOLUTE 51Y  
**LFE PS SHEILA 59F**  
LFE PS SHEILA 124D

CE	BW
13	-0.6
WW	YW
73.2	109.1
Milk	MCE
26.3	6.3
MWWT	TI
62.9	75.99
API	
139.08	

- Red Cobra sons are hard to find
- 301H is long made, big haired, soft sided
- Grand Dam LFE 124D is a direct LFE 152B daughter - Dam to Lot 231



NCB Cobra 47Y - Sire

**221****LFE RS LEWIS 349H**

1326932 LFE 349H Jan. 10, 2020

Purebred  
Homo Polled  
Red  
BW - 110  
ADJ WWT - 811  
ADJ YWT - 1385

ERIXON DEALER 63Z  
**ERIXON HIGH ROLLER 143B**  
ERIXON LADY 133U  
REMINGTON RED LABEL HR  
**LFE RS AMBER 205T**  
LFE AMBER 27H

CE	BW
4.5	6.6
WW	YW
81.6	122.4
Milk	MCE
31.6	1.5
MWWT	TI
72.4	70.76
API	
118.66	

- LFE 205T ET born power bull.
- Larger framed, Dam LFE 205T is one of the best Amber cows produced to date



LFE 205T - Dam





**222** **LFE RS LEWIS 422H**  
 1330503 LFE 422H Feb. 3, 2020

Purebred Homo Polled Red  
 BW - 95  
 ADJ WWT - 778  
 ADJ YWT - 1365

NUG ROYAL RED 324A  
**MAF STUNNER 95E**  
 RUST MISS 287Z  
 LFE BS LEWIS 322U  
**LFE RS FIRSTBASE 628Y**  
 LFE BS FIRSTBASE 36X

CE	BW	WW	YW	Milk	MCE	MWWT	API	TI
6.3	3	66.6	95.9	18.4	1.2	51.7	114.36	64.51



LFE RS Firstbase 628Y - Dam

- Low set, easy fleshing, cherry red Stunner
- Maternal brothers at work for Westman Farms and Grant Bailey
- Hard working Stubby Dam doesn't miss



**223** **LFE RS LEWIS 440H**  
 1339792 LFE 440H Feb. 11, 2020

Purebred Homo Polled Red  
 BW - 93  
 ADJ WWT - 775  
 ADJ YWT - 1487

NUG ROYAL RED 324A  
**MAF STUNNER 95E**  
 RUST MISS 287Z  
 LFE BS LEWIS 420B  
**LFE RS AMBER 35D**  
 LFE RS AMBER 160X

CE	BW	WW	YW	Milk	MCE	MWWT	API	TI
2.2	5.2	80.8	124.5	22.8	1.1	63.2	111.12	70.27



LFE RS Amber 160X - Dam

- Well balanced, soft made Stunner
- Dam LFE 35D comes from two of the best Amber cows; LFE 160X and LFE 27H



**224** **LFE RS LEWIS 405H**  
 1327327 LFE 405H Jan. 27, 2020

Purebred Homo Polled Red  
 BW - 95  
 ADJ WWT - 806  
 ADJ YWT - 1443

NUG ROYAL RED 324A  
**MAF STUNNER 95E**  
 RUST MISS 287Z  
 LFE BS LEWIS 322U  
**LFE RS CIRCLE S 176Y**  
 LFE RS CIRCLE S 605U

CE	BW	WW	YW	Milk	MCE	MWWT	API	TI
4.2	4.2	69.8	103.8	18.5	0.2	53.4	105.81	63.95



LFE RS Circle S 608D - Mat. Sister

- Rainbow Red Angus bought the full brother last spring
- Maternal sister sold to Quebec in our 2018 female sale to Jean Francois Leblond



**225****LFE RS LEWIS 446H**

1339794 LFE 446H Feb. 13, 2020

Purebred  
Homo Polled  
Red  
BW - 101  
ADJ WWT - 871  
ADJ YWT - 1484

NUG ROYAL RED 324A  
**MAF STUNNER 95E**  
RUST MISS 287Z  
KWA FLYF RED MOUNTAIN 16Z  
**KWA MS MOUNTAIN 168D**  
TESS MS RED 67X

CE	BW	WW	YW	Milk	MCE	MWWT	API	TI
2.7	4.9	74.8	118	20.7	1.1	58.1	115.86	69.42

- Soft made Stunner, big performance packed into a moderate package
- Dam was purchased from Ashworth's in the fall of 2017



KWA Ms Mountain 168D - Dam

**226****LFE RS LEWIS 431H**

1330510 LFE 431H Feb. 6, 2020

Purebred  
Homo Polled  
Red  
BW - 99  
ADJ WWT - 809  
ADJ YWT - 1422

NUG ROYAL RED 324A  
**MAF STUNNER 95E**  
RUST MISS 287Z  
LFE BS LEWIS 397C  
**LFE RS FIRSTBASE 58E**  
LFE RS FIRSTBASE 7C

CE	BW	WW	YW	Milk	MCE	MWWT	API	TI
0.6	7.1	73.7	114.6	20.2	-1.9	57.1	104.94	64.11

- Stunner off a second calving Firstbase female
- Big hiped, big hair, easy fleshing, sound on the move



MAF Stunner 95E - Sire

**227****LFE RS LEWIS 441H**

1330518 LFE 441H Feb. 11, 2020

Purebred  
Polled  
Red  
BW - 97  
ADJ WWT - 818  
ADJ YWT - 1519

NUG ROYAL RED 324A  
**MAF STUNNER 95E**  
RUST MISS 287Z  
LFE MR LEWIS 514N  
**LFE RS ULTRA GAL 175X**  
LFE ULTRA GAL 100L

CE	BW	WW	YW	Milk	MCE	MWWT	API	TI
2.1	5.1	66.4	103	20.8	-1.6	54	105.65	61.48

- Dark cherry red Stunner off a 13 year old LFE 514N daughter
- Maternal brother sold to Westway Farms 5 years ago; Mountaineer 303C



LFE Mountaineer 303C - Mat. Bro.







## 228 LFE RS LEWIS 817G

1339678 LFE 817G Dec. 25, 2019

Purebred  
Homo Polled  
Red  
BW - 105  
ADJ WWT - 808  
ADJ YWT - 1382

NUG ROYAL RED 324A  
**MAF STUNNER 95E**  
RUST MISS 287Z  
NUG ROYAL RED 324A  
**MAF SHAMROCK 29C**  
IPU MS. RED ESSENCE 19Z

CE	BW	WW	YW	Milk	MCE	MWWT	API	TI
0.6	6.6	81.1	121.5	17.7	-0.7	58.3	102.14	67.91



MAF Shamrock 29C - Dam

- Powerful Stunner off an ideal Royal Red daughter
- Dark cherry red, big scrotal, and good footed



## 229 LFE RS LEWIS 428H

1330508 LFE 428H Feb. 6, 2020

Purebred  
Homo Polled  
Red  
BW - 96  
ADJ WWT - 817  
ADJ YWT - 1454

NUG ROYAL RED 324A  
**MAF STUNNER 95E**  
RUST MISS 287Z  
LFE TRIUMPH 816A  
**LFE RS AMBER 6D**  
LFE RS AMBER 6IY

CE	BW	WW	YW	Milk	MCE	MWWT	API	TI
2.7	5.4	76.9	122.8	18.6	0.5	57.1	111.11	65.98



LFE 6IY - Grand Dam



LFE Lewis 394G - Full Brother

- Dark, moderate, stout, and hairy
- Full brother sold last spring to Westman Farms



## 230 LFE RS LEWIS 432H

1330512 LFE 432H Feb. 7, 2020

Purebred  
Homo Polled  
Red  
BW - 100  
ADJ WWT - 936  
ADJ YWT - 1637

NUG ROYAL RED 324A  
**MAF STUNNER 95E**  
RUST MISS 287Z  
LFE TRESTLE 323Z  
**LFE RS MIA 114D**  
LFE RS MS LEWIS 196W

CE	BW	WW	YW	Milk	MCE	MWWT	API	TI
1.2	6.5	80.2	122.2	22.3	-0.3	62.4	107.79	66.41



LFE 152U - Grand Dam

- Study the bulls. This guy will be one of your favorite red bulls
- Loads of shape, excellent on the move



231

# LFE RS LEWIS 425H

1330505 LFE 425H Feb. 5, 2020

Purebred  
Homo Polled  
Red  
BW - 98  
ADJ WWT - 830  
ADJ YWT - 1430

NUG ROYAL RED 324A  
MAF STUNNER 95E  
RUST MISS 287Z  
LFE SPRINGSTEEN 449Y  
LFE RS SHEILA 152B  
LFE RS SHEILA 72X

CE	BW	WW	YW	Milk	MCE	MWWT	API	TI
0.1	6.9	79	122.4	22.6	-2.8	62.1	101.62	64.31



LFE RS Sheila 152B - Dam



LFE Amber Jack 385E - Brother

- Dam LFE 152B is a tremendous Springsteen female, she is the mother to LFE Amber Jack



- 425H is a stout built, moderate made Stunner, he's worth a look

232

# LFE RS LEWIS 855G

1326766 LFE 855G Dec. 30, 2019

Purebred  
Homo Polled  
Red  
BW - 92  
ADJ WWT - 908  
ADJ YWT - 1570

SVS CAPTAIN MORGAN 11Z  
BGS/BM CAPTAIN SCREAM 63D  
RF SCREAM 215Z  
LFE SPRINGSTEEN 449Y  
LFE RS CHARD 48C  
LFE RS CHARD 165X

CE	BW	WW	YW	Milk	MCE	MWWT	API	TI
3	7.2	100.4	149.8	24.9	-0.2	75.1	109.56	77.57

- Big framed, heavy made LFE 48C son
- LFE 48C is the most powerful red donor in our possession



Captain Scream 63D - Sire



RCC project at Edgundo





# Red Simmental Extra Age Bulls

## Reference Sires



LFE Amber Jack 385E



MAF Stunner 95E



LFE High Tide 328E



LFE Hoover 847D



300

## LFE RS LEWIS 3169G

1301212 LFE 3169G May 26, 2019

Purebred Polled Red  
 BW - 89  
 ADJ WWT - 891  
 Jan 15 - 1950

LFE BLOOD RUSH 833A  
 LFE AMBER JACK 385E  
 LFE RS SHEILA 152B  
 LFE BISS BLACKADVANCE 426U  
 LFE RS TERRI 2018Y  
 LFE RS MISS ARNOLD 145S

CE	BW	WW	YW	Milk	MCE	MWWT	API	TI
1.6	7.6	88.6	131.2	27.3	-1.4	71.6	116.12	70.38



LFE RS Lewis 3122D - Brother

- Everything a beef bull should be; smooth shoulder, dark red and long bodied
- Maternal brother sold to Plain Lake Colony



301

## LFE RS LEWIS 3111G

1300998 LFE 3111G May 18, 2019

Purebred Homo Polled Red  
 BW - 100  
 ADJ WWT - 678  
 Jan 15 - 1700

LFE BLOOD RUSH 833A  
 LFE AMBER JACK 385E  
 LFE RS SHEILA 152B  
 LFE BELLAGIO 529X  
 LFE RS MISS REWARD 168B  
 LFE BS MISS REWARD 120Y

CE	BW	WW	YW	Milk	MCE	MWWT	API	TI
0.9	6	83.7	124.5	25.8	-2.4	67.7	106.71	70.94



LFE Ms Reward 120Y - Grand Dam

- Dam 168B is the product of two black parents
- 3111G is low set, big scrotal and good footed. Amber Jack sons are as good on the ground as any of them

RED SIMMENTAL X-AGE



**302****LFE RS LEWIS 3130G**

1301075

LFE 3130G

May 20, 2019

Purebred  
Homo Polled  
Red  
BW - 90  
ADJ WWT - 699  
Jan 15 - 1640

LFE BLOOD RUSH 833A  
**LFE AMBER JACK 385E**  
LFE RS SHEILA 152B  
LFEBISS BLACKADVANCE 426U  
**LFE RS MISS KNIGHT 2031Z**  
LFE MISS KNIGHT 214N

CE	BW	WW	YW	Milk	MCE	MWWT	API	TI
-0.3	6.8	79.1	121.2	26.9	-3.3	66.4	104.31	62.98

- Maternal brothers sold to Midway Industries and Kelly Battrum



LFE RS Lewis 3061F - Brother

**303****LFE RS LEWIS 3140G**

1301163

LFE 3140G

May 21, 2019

Purebred  
Homo Polled  
Red  
BW - 94  
ADJ WWT - 713  
Jan 15 - 1570

NUG ROYAL RED 324A  
**MAF STUNNER 95E**  
RUST MISS 287Z  
LFEBISS BLACKADVANCE 426U  
**LFE RS ZOEY 56Z**  
LFE RS SFM 608T

CE	BW	WW	YW	Milk	MCE	MWWT	API	TI
-1.2	5.7	76.9	121.7	21.1	-2.2	59.6	108.37	67.89

- Cocky Stunner son. LFE 56Z is one of my favorite cows in the summer program, her track record in the winter program was phenomenal
- Maternal brothers at work for Swantewitt Simmentals and Lee and George Svederus



LFE Blackadvance - Grand Sire

**304****LFE RS LEWIS 3150G**

1301184

LFE 3150G

May 23, 2019

Purebred  
Homo Polled  
Red  
BW - 79  
ADJ WWT - 708  
Jan 15 - 1570

NUG ROYAL RED 324A  
**MAF STUNNER 95E**  
RUST MISS 287Z  
NCB COBRA 47Y  
**LFE RS MS TUDOR 2157D**  
LFE RS MISS TUDOR 606U

CE	BW	WW	YW	Milk	MCE	MWWT	API	TI
5.3	4.6	80.4	121.4	23.6	2.1	63.8	113.99	69.87

- Low set Stunner, dark cherry red
- Grand Dam LFE 606U has sons at work for Y Coulee, Hoegle Livestock, Wayne Young, Darcy Poiakiewski, and Battrum Cattle Co



LFE Miss Tudor 606U - Grand Dam





305

# LFE RS LEWIS 3122G

1301009 LFE 3122G May 19, 2019

CE	BW	WW	YW	Milk	MCE	MWWT	API	TI
4.5	5.2	83.6	122.9	29.3	1.7	71.1	124.71	74.02

Purebred  
Homo Polled  
Red  
BW - 89  
ADJ WWT - 859  
Jan 15 - 1810

NUG ROYAL RED 324A  
MAF STUNNER 95E  
RUST MISS 287Z  
KWA FLYF RED MOUNTAIN 16Z  
LFE RS JULI 650B  
LFE RS JULI 78Y

- One of the most complete red bulls on offer
- Maternal brother sells as Lot 208
- Grand Dam LFE 78Y is a leading red cow donor in our program



LFE Juli 152U - Grand Dam



LFE Juli 78Y - Grand Dam

306

# LFE RS LEWIS 3142G

Unregistered LFE 3142G May 21, 2019

CE	BW	WW	YW	Milk	MCE	MWWT	API	TI
5.0	3.7	74.1	108.8	21.1	1.6	57.6	121.45	68.8

Purebred  
Polled  
Red  
BW - 74  
ADJ WWT - 802  
Jan 15 - 1660

NUG ROYAL RED 324A  
MAF STUNNER 95E  
RUST MISS 287Z  
KWA BIG TIME 86A  
LFE RS CALYNA 2031E  
LFE RS CALYNA 2069X

- Moderate stud with shape and style
- Stunner progeny display extra rib shape



MAF Stunner 95E - Sire

RED SIMMENTAL X-AGE



**307****LFE RS LEWIS 3063G**

1300946 LFE 3063G May 11, 2019

Purebred  
Homo Polled  
Red  
BW - 85  
ADJ WWT - 738  
Jan 15 - 1640

NUG ROYAL RED 324A  
**MAF STUNNER 95E**  
RUST MISS 287Z  
LFEBISS BLACKADVANCE 426U  
**LFE RS GENE 2153C**  
LFE BS GENE 2089X

CE	BW	WW	YW	Milk	MCE	MWWT	API	TI
3.4	4.5	76.8	114.6	23.7	1.5	62.1	108.06	67.24

- Well balanced Stunner son with big time performance data
- Dam is a hard-working Advance daughter with the right kind of foot and udder

**308****LFE RS LEWIS 3100G**

1300984 LFE 3100G May 19, 2019

Purebred  
Homo Polled  
Red  
BW - 92  
ADJ WWT - 737  
Jan 15 - 1840

NUG ROYAL RED 324A  
**MAF STUNNER 95E**  
RUST MISS 287Z  
KJLI THE ROCK 1L  
**LFE RS SIGNAL 187S**  
LFE SIGNAL 620E

CE	BW	WW	YW	Milk	MCE	MWWT	API	TI
-0.9	9.5	83.3	124.1	21.3	0.1	63	110.58	67.62

- Big power bull. Easy to find, typical Stunner
- Maternal brothers at work for Kevin Cherniwchan and Grant Bailey

**309****LFE RS LEWIS 3141G**

1301164 LFE 3141G May 21, 2019

Purebred  
Polled  
Red  
BW - 96  
ADJ WWT - 654  
Jan 15 - 1610

NUG ROYAL RED 324A  
**MAF STUNNER 95E**  
RUST MISS 287Z  
LFEBISS BLACKADVANCE 426U  
**LFE RS STARDOM 2016Y**  
LFE RS RED STARDOM 77U

CE	BW	WW	YW	Milk	MCE	MWWT	API	TI
2.2	4.7	80.1	120.8	22.9	0.4	63	118.99	71.13

**310****LFE RS LEWIS 3206G**

1301526 LFE 3206G June 2, 2019

Purebred  
Homo Polled  
Red  
BW - 82  
ADJ WWT - 599  
Jan 15 - 1540

NUG ROYAL RED 324A  
**MAF STUNNER 95E**  
RUST MISS 287Z  
NCB RED SUSPECT 30S  
**LFE RS AMBER 21A**  
LFE RS AMBER 205T

CE	BW	WW	YW	Milk	MCE	MWWT	API	TI
1.5	8.1	76.6	120.6	21.4	-1.4	59.7	101.05	62.62



LFE Amber 205T - Grand Dam





**311 LFE RS LEWIS 3257G**  
 1329714 LFE 3257G June 18, 2019

Purebred Homo Polled Red  
 BW - 80  
 ADJ WWT - 810  
 Jan 15 - 1680

NUG ROYAL RED 324A  
**MAF STUNNER 95E**  
 RUST MISS 287Z  
 LFE RED CASINO 3036X  
**LFE RS RED N GOOD 2028A**  
 LFE RS RED N GOOD 179T

CE	BW	WW	YW	Milk	MCE	MWWT	API	TI
4.3	5.3	82.7	126.3	25.9	2	67.3	108.26	70.02



LFE Casino 3036X - Grand Sire

- Big rig, some top red bulls have come through this sale off of LFE 2028A
- Maternal brothers at work for JMJ, Rocking Heart Range and Diamond M Ranch



**312 LFE RS LEWIS 3194G**  
 1301363 LFE 3194G May 30, 2019

Purebred Hetero Polled Red  
 BW - 82  
 ADJ WWT - 836  
 Jan 15 - 1710

LFE ROCHFORD 3013T  
**LFE TRESTLE 323Z**  
 LFE RS JULI 152U  
 LFE RRS DIABLO 3112U  
**LFE RS BEAUTY 2134Y**  
 STS SLEEPING BEAUTY 2068S

CE	BW	WW	YW	Milk	MCE	MWWT	API	TI
6.2	5.8	70.8	99.5	26.6	0.5	62	117.93	66.64



LFE RS Lewis 3227C - Brother

- Low birth Trestle son, stout, soft and soggy
- Maternal brother at work for Hayes Land and Cattle

*New Sire*



LFE Stratton 3094F

**313 LFE RS LEWIS 3228G**  
 1301540 LFE 3228G June 6, 2019

Purebred Polled Red  
 BW - 91  
 ADJ WWT - 661  
 Jan 15 - 1580

NUG ROYAL RED 324A  
**MAF STUNNER 95E**  
 RUST MISS 287Z  
 LFE RRS DIABLO 3112U  
**LFE RS TOM 2186B**  
 WFL MS RED KLC TOM 7051T

CE	BW	WW	YW	Milk	MCE	MWWT	API	TI
2.1	5.5	74.1	106	19.7	-0.2	56.8	117.23	66.35

**314 LFE RS LEWIS 3232G**  
 1301547 LFE 3232G June 8, 2019

Purebred Homo Polled Red  
 BW - 81  
 ADJ WWT - 842  
 Jan 15 - 1680

LFE ROCHFORD 3013T  
**LFE TRESTLE 323Z**  
 LFE RS JULI 152U  
 LFE SPRINGSTEEN 449Y  
**LFE RS AMBER 24A**  
 LFE RS AMBER 160X

CE	BW	WW	YW	Milk	MCE	MWWT	API	TI
5.5	4.7	74	100.5	30.2	0.2	67.2	114.4	65.45



# 315 LFE RS LEWIS 3117G

1301003 LFE 3117G May 18, 2019

Purebred  
Homo Polled  
Red  
BW - 86  
ADJ WWT - 797  
Jan 15 - 1700

LFE TRESTLE 323Z  
LFE HIGH TIDE 328E  
LFE RS MIA 109Y  
LFE SPRINGSTEEN 449Y  
LFE RS LARA 2088B  
TJLB FOXY 184R

CE	BW	WW	YW	Milk	MCE	MWWT	API	TI
5.2	3.8	78.6	116.8	23.6	0.4	62.9	132.92	75.81



LFE Juli 152U - Pat. Grand Dam



LFE High Tide 328E - Sire



- Scale crushing High Tide son
- High Tide was purchased by Hayes land and Cattle in the 2018 sale

# 316 LFE RS LEWIS 3082G

1300911 LFE 3082G May 13, 2019

Purebred  
Homo Polled  
Red  
BW - 90  
ADJ WWT - 799  
Jan 15 - 1640

LFE TRESTLE 323Z  
LFE HIGH TIDE 328E  
LFE RS MIA 109Y  
LFE SPRINGSTEEN 449Y  
LFE RS KATARINA 2099B  
LFE RS KATARINA 2006W

CE	BW	WW	YW	Milk	MCE	MWWT	API	TI
4.4	4.7	85.2	129.7	23.4	-1	66	119.72	71.59

- Moderate in stature, cherry red, High Tide son
- Maternal brother sold to Brockhoff Cattle Co



LFE RS Lewis 3166D - Brother



# 317 LFE RS LEWIS 3088G

1300916 LFE 3088G May 14, 2019

Purebred  
Homo Polled  
Red  
BW - 89  
ADJ WWT - 735  
Jan 15 - 1700

LFE TRESTLE 323Z  
LFE HIGH TIDE 328E  
LFE RS MIA 109Y  
LFE SPRINGSTEEN 449Y  
LFE RS SHEILA 2075B  
LFE RS SHEILA 2047X

CE	BW	WW	YW	Milk	MCE	MWWT	API	TI
3.4	5.6	88.2	133.1	25.3	-0.7	69.4	123.79	78.8

- Proud made bull, comes with more extension up front
- Springsteen Dam is a moderate belly dragger, built for today's times (hearty)



LFE Springsteen 449Y - MGS







## 318 LFE RS LEWIS 3110G

1300997 LFE 3110G May 18, 2019

Purebred Homo Polled Red  
 BW - 94  
 ADJ WWT - 807  
 Jan 15 - 1800

LFE TRESTLE 323Z  
 LFE HIGH TIDE 328E  
 LFE RS MIA 109Y  
 LFE SPRINGSTEEN 449Y  
 LFE RS PEPPER 73C  
 LFE PEPPER 142P

CE	BW
1.3	6.8
WW	YW
87.6	130.9
Milk	MCE
24.2	-1.5
MWWT	TI
68	76.15
API	
122.56	

- 3/4 brother to Lot 317
- Bigger in frame, longer dimension, heavy muscled Tide son



## 319 LFE RS LEWIS 3034G

1300904 LFE 3034G May 5, 2019

Purebred Homo Polled Red  
 BW - 87  
 ADJ WWT - 845  
 Jan 15 - 1810

LFE TRESTLE 323Z  
 LFE HIGH TIDE 328E  
 LFE RS MIA 109Y  
 KUNTZ SHERIFF 8A  
 LFE RS HEARTS 2192D  
 LFE RS HEARTS 2216B

CE	BW
4.8	5.1
WW	YW
88	135.3
Milk	MCE
28.5	1.3
MWWT	TI
72.5	79.22
API	
128.54	

- Middle of the pen High Tide son. Displays a balanced EPD profile competing in the top 10% of the breed for all performance data



## 320 LFE RS LEWIS 3217G

1301528 LFE 3217G June 4, 2019

Purebred Polled Red  
 BW - 89  
 ADJ WWT - 743  
 Jan 15 - 1520

LFE BLOOD RUSH 833A  
 LFE AMBER JACK 385E  
 LFE RS SHEILA 152B  
 LFE RED RIDGE 809W  
 LFE RS SHEILA 145Z  
 KWA MS ROCK 11W

CE	BW
1.5	6.2
WW	YW
82.1	125.1
Milk	MCE
33.1	-2.4
MWWT	TI
74.2	69.96
API	
119.46	



KWA Ms Rock 11W - Grand Dam

- Dam and Grand Dam are tremendous red cows with timeless longevity
- Grand Dam was purchased from Ashworth's in their 2013 sale as a bred heifer

## 321 LFE RS LEWIS 3119G

1301005 LFE 3119G May 19, 2019

Purebred Polled Red  
 BW - 92  
 ADJ WWT - 666  
 Jan 15 - 1540

TNT 90 PROOF Z401  
 WFL WESTCOTT 24C  
 WFL SWEET LICIOUS 1044X  
 R PLUS BLACKEDGE  
 LFE RS MISS TUDOR 606U  
 LFE RS MISS TUDOR 57S

CE	BW
4.5	5.5
WW	YW
89.2	138.8
Milk	MCE
26.1	-1.5
MWWT	TI
70.7	73.41
API	
111.7	

## 322 LFE RS LEWIS 3149G

1301183 LFE 3149G May 22, 2019

Purebred Homo Polled Red  
 BW - 87  
 ADJ WWT - 670  
 Jan 15 - 1670

LFE ROCHFORD 3013T  
 LFE TRESTLE 323Z  
 LFE RS JULI 152U  
 MAF R HORIZON 7Y  
 MAF REBECCA 5C  
 MRL MISS 421X

CE	BW
10	2.6
WW	YW
73.2	103.3
Milk	MCE
20.7	5
MWWT	TI
57.3	68.07
API	
117.89	



# 323 LFE RS LEWIS 3163G

1301201 LFE 3163G May 24, 2019

Purebred  
Homo Polled  
Red  
BW - 84  
ADJ WWT - 859  
Jan 15 - 1850

LFE BS LEWIS 420B  
**LFE HOOVER 847D**  
LFE BS TINA 19Z  
LFE BISS BLACKADVANCE 426U  
**LFE BS TRUFFLE 2053Y**  
LFE RS TRUFFLE 53U

CE	BW
4.6	6.2
WW	YW
92.2	138.7
Milk	MCE
23.4	1.6
MWWT	TI
69.5	76.31
API	
126.39	



LFE Hoover 847D - Sire

- One of the highlights in aged red pen
- Maternal brothers at work for Morinville Colony

# 324 LFE RS LEWIS 3209G

1301521 LFE 3209G June 3, 2019

Purebred  
Polled  
Red  
BW - 85  
ADJ WWT - 690  
Jan 15 - 1520

LFE BS LEWIS 420B  
**LFE HOOVER 847D**  
LFE BS TINA 19Z  
LFE BELLAGIO 529X  
**LFE RS RED N GOOD 211IA**  
LFE RS RED N GOOD 210S

CE	BW
3.2	4.1
WW	YW
82	119.1
Milk	MCE
27.3	0.9
MWWT	TI
68.3	75.5
API	
123.6	



LFE Tina 19Z - Pat. Grand Dam

- Dark cherry red and hairy
- Moderate made Hoover son

# 325 LFE RS LEWIS 3189G

1301357 LFE 3189G May 30, 2019

Purebred  
Homo Polled  
Red  
BW - 83  
ADJ WWT - 706  
Jan 15 - 1610

LFE BS LEWIS 420B  
**LFE HOOVER 847D**  
LFE BS TINA 19Z  
CNS DREAM ON L186  
**LFE RS KEEPSAKE 30T**  
LFE RS KEEPSAKE 208R

CE	BW
4.7	4.7
WW	YW
80.5	116.5
Milk	MCE
22.4	2.6
MWWT	TI
62.7	80.33
API	
140.86	



SSP Keepsake 23K - Grand Dam

- Long made, low birth
- Adequate for second calvers

# 326 LFE RS LEWIS 3104G

1340908 LFE 3104G May 17, 2019

Purebred  
Polled  
Red  
BW - 94  
ADJ WWT - 744  
Jan 15 - 1700

LFE VIPER 455U  
**NCB COBRA 47Y**  
NCB MISS DREAM 22T  
CDI AUTHORITY 77X  
**ACS BREATHLESS 3D**  
ACS MS RIBEYE 21N

CE	BW
8.2	3.3
WW	YW
83	125.6
Milk	MCE
27.1	4.2
MWWT	TI
68.5	76.27
API	
131.16	



- Hoover son off a Kaskiew cow we purchased in Shades of 2018





**327** **LFE RS LEWIS 3118G**  
 1301004 LFE 3118G May 18, 2019

Purebred  
 Homo Polled  
 Red  
 BW - 80  
 ADJ WWT - 703  
 Jan 15 - 1520

WS PILGRIM H182U  
**RUST HENN RAMBLER 6003**  
 KAPPES SADIE M166  
 LFE SI 815Y  
**LFE RS HONOUR 2152E**  
 LFE RS HONOUR 2153B

CE	BW	WW	YW	Milk	MCE	MWWT	API	TI
7.1	2.5	75.5	102.1	27.5	2.6	65.3	114.77	70.19



RUST HENN Rambler 6003 - Sire

- Low Birth Rambler sons suitable for heifers and second calvers



**328** **LFE RS LEWIS 3106G**  
 1300994 LFE 3106G May 17, 2019

Purebred  
 Homo Polled  
 Red  
 BW - 85  
 ADJ WWT - 723  
 Jan 15 - 1540

WS PILGRIM H182U  
**RUST HENN RAMBLER 6003**  
 KAPPES SADIE M166  
 MAF RATTLER 23C  
**LFE RS SHAMROCK 13E**  
 MAF SHAMROCK 29C

CE	BW	WW	YW	Milk	MCE	MWWT	API	TI
7.5	3.5	75.8	102.4	25.7	3.4	63.6	105.68	66.89



MBJ Shamrock 29C - Grand Dam

- Calving Ease Rambler son with substance and balance
- Maternal brother to Dam sells as Lot 228

new to the herd



**Jack William Bubd**  
 Born on August 2, 2020  
 8 lbs 11 oz  
 Proud Parents Tyler & Brianna





# MARK AND + CATTLE

Welcome to the 36th Annual Bull Sale at Lewis Farms. Once again I am honoured to be selling bulls at this sale. 2020 has been an unprecedented year and has been challenging for many with COVID 19, stay at home orders, and job uncertainty. Although the year has been unusual to say the least, the Bull Sale of 2020 and the female sales have been outstanding. As the cattle sales of 2020 end, we enter 2021 with much optimism and

hope of a healthy and prosperous year. My offer this year could be my most consistent group of bulls from top to bottom. The bulls are extremely well colored with high performance and one sire group for calving ease on 2-year olds.

Once again thank you to the Lewis crew. Thank you to my loyal customers and new ones to come.

If you have any questions please call me at  
780.842.7207

Lenny Mark



400

## SBV MARK 532H

1328209 SBV 532H Jan. 12, 2021

CE	BW	WW	YW	Milk	MCE	MWWT	API	TI
0.6	7.6	80.5	115.8	39.6	0.1	79.9	105.34	69.08

Full Fleck  
Horned  
Red

BW - 104  
ADJ WWT - 882  
ADJ YWT - 1512

DOUBLE BAR D BANKER  
VIRGINIA PAYDIRT 44E  
BROCK XAMPLE  
SBSF IRONMAN 29B  
DOUBLE BAR D KLAUDIA 41D  
DOUBLE BAR D KLAUDIA 167A



SBV 4576 - Sister  
Sold to Rob Stewart

- Performance bound Pay Dirt son, great pigment and big scrotal
- Double Bar D Dam 41D is big volume, massive middle, big footed and perfect udder



VIRGINIA Paydirt 44E - Sire



Double Bar D Klaudia 41D - Dam





# VIRGINIA Paydirt 44E x SBV Miss Beat 94C Flush



Lot 401



SBV Miss Beat 94C - Dam



VIRGINIA Paydirt 44E - Sire



Lot 405

- Unprecedented flush, of SBV 94C and Pay Dirt
- Full sister SBV 610H sold at Friday Night Lights to Elm Tree Farms
- Miss Beat 94C is the best cow to walk pastures at Mark Land and Cattle
- She is great color, pear shaped with a beautiful udder, can match her to any bull and the results are great



SBV Miss Beat 610H - Full Sister

FULLBLOOD



**401****SBV MARK 519H**

1328202 SBV 519H Jan. 7, 2021

BW - 105 ADJ WWT - 937 ADJ YWT - 1497

CE BW WW YW Milk MCE MWWT API TI

0 7.4 83.3 119.3 37.8 0.7 79.4 108.98 70.41



Lot 402

**402****SBV MARK 530H**

1328208 SBV 530H Jan 11, 2021

BW - 102 ADJ WWT - 916 ADJ YWT - 1414

CE BW WW YW Milk MCE MWWT API TI

0 7.4 83.3 119.3 37.8 0.7 79.4 108.98 70.41

**403****SBV MARK 534H**

1328211 SBV 534H Jan. 12, 2021

BW - 104 ADJ WWT - 871 ADJ YWT - 1401

CE BW WW YW Milk MCE MWWT API TI

0 7.4 83.3 119.3 37.8 0.7 79.4 108.98 70.41



Lot 403

**404****SBV MARK 542H**

1328247 SBV 542H Jan. 15, 2021

BW - 105 ADJ WWT - 855 ADJ YWT - 1409

CE BW WW YW Milk MCE MWWT API TI

0 7.4 83.3 119.3 37.8 0.7 79.4 108.98 70.41

**405****SBV MARK 546H**

1328217 SBV 546H Jan. 17, 2021

BW - 105 ADJ WWT - 911 ADJ YWT - 1497

CE BW WW YW Milk MCE MWWT API TI

0 7.4 83.3 119.3 37.8 0.7 79.4 108.98 70.41



Lot 404



SBV Mark 583G - Brother

Fullblood | DOUBLE BAR D BANKER  
 Horned | VIRGINIA PAYDIRT 44E  
 Red | BROCK XAMPLE  
 | LFE LANDSLIDE 572Z  
 | SBV MISS BEAT 94C  
 | LFE FS MISS BEAT 162W



**406****SBV MARK 524H**

1328204 SBV 524H Jan. 9, 2021

CE	BW	WW	YW	Milk	MCE	MWWT	API	TI
0.5	7.8	82.2	120.2	39.9	1.8	81	110.8	71.63

FullBlood  
Horned  
Red  
BW - 100  
ADJ WWT - 844  
ADJ YWT - 1303

DOUBLE BAR D BANKER  
**VIRGINIA PAYDIRT 44E**  
BROCK XAMPLE  
BAR 5 SA STIMULATION 415P  
**SBV MERLOT 641Z**  
NUG MERLOT 41X

- Royally bred Pay Dirt son off one the highest earning Fullblood cows
- Maternal brothers have sold over the years to Marvin Hutchison in North Carolina, Westman Farms and 619 Land and Cattle to name a few
- Another brother sired by Breaking Curfew sells as Lot 413



VIRGINIA Paydirt 44E - Sire



SBV Merlot 641Z - Dam

**407****SBV MARK 538H**

1328214 SBV 538H Jan. 14, 2021

FullBlood  
Horned  
Red  
BW - 100  
ADJ WWT - 846  
ADJ YWT - 1419

LFE LANDSLIDE 57ZZ  
**LFE BREAKING CURFEW 511E**  
LFE FS MISS BEAT 162W  
LFE JUSTIFIED 7328X  
**SBV MS BEAT 821B**  
LFE FS MS BEAT 181T

CE	BW	WW	YW	Milk	MCE	MWWT	API	TI
3.3	5.9	75.3	106.8	32.2	3.6	69.9	104.59	67.51



LFE FS Ms Beat 181T - Grand Dam

- SBV Dam 821B is a Justified daughter out of the famous LFE 181T cow
- Loads of milk in this cow and this pedigree

**408****SBV MARK 537H**

1328212 SBV 537H Jan. 14, 2021

FullBlood  
Horned  
Red  
BW - 105  
ADJ WWT - 830  
ADJ YWT - 1334

LFE LANDSLIDE 57ZZ  
**LFE BREAKING CURFEW 511E**  
LFE FS MISS BEAT 162W  
CEN LAREDO 519L  
**IPU MS LAREDO 143T**  
IPU MS LAAREDO 25R

CE	BW	WW	YW	Milk	MCE	MWWT	API	TI
3.3	6.7	74.2	103.9	34.6	5.2	71.7	111.10	64.36



IPU Ms Laredo 143T - Dam

- Dam IPU 143T is a 15yr old cow that's still calving in January
- Maternal brother at work for Bristow Ranching

**409****SBV MARK 707G**

1328243 SBV 707G Sept. 25, 2021

Full Fleck  
Horned  
Red  
BW - 100  
ADJ WWT - 778  
JAN 14 WT - 1530

DOUBLE BAR D BANKER  
**VIRGINIA PAYDIRT 44E**  
BROCK XAMPLE  
DOUBLE BAR D UNITED 176A  
**BEE DELORISS 620D**  
BEE SHE'S NO ANGEL 231Y

CE	BW	WW	YW	Milk	MCE	MWWT	API	TI
-1	7.7	75.9	110.2	36.6	-2.7	74.6	102.86	65.11

- Big statured bull, long as a train
- Extra age bull that can breed a few more on that first season

FULLBLOOD



**410****SBV MARK 571H**

1328235 SBV 571H Jan. 31, 2021

Full Fleck  
Horned  
RedBW - 104  
ADJ WWT - 897  
ADJ YWT - 1483DOUBLE BAR D BANKER  
VIRGINIA PAYDIRT 44E  
BROCK XAMPLE  
DOUBLE BAR D THUNDER 273X  
DOUBLE BAR D GEM 275B  
MFI MISS GERALDINE 9259

CE	BW	WW	YW	Milk	MCE	MWWT	API	TI
-0.6	7.4	74.2	101	37.3	-0.5	74.4	103.59	65.21

- Long made, smooth built, big scrotal calf off Pay Dirt
- Dam is a Thunder daughter purchased from Double Bar D that is highly maternal



DOUBLE BAR D Gen 275B - Dam

**411****SBV MARK 706G**

1328241 SBV 706G Sept. 23, 2021

BW - 95 ADJ WWT - 784 Jan 14 - 1700

CE	BW	WW	YW	Milk	MCE	MWWT	API	TI
10	4.4	76	108.5	38.5	7.1	76.5	115.41	68.95



Lot 411

**412****SBV MARK 701G**

1328240 SBV 701G Sept. 20, 2021

BW - 96 ADJ WWT - 816 Jan 14 - 1700

CE	BW	WW	YW	Milk	MCE	MWWT	API	TI
10	4.4	76	108.5	38.5	7.1	76.5	115.41	68.95

Full Fleck  
Horned  
RedVIRGINIA MAXIMUS  
ANCHOR D RAPTOR 392C  
ANCHOR D ZILEY 392Z  
LFS POL BALBOA 40U  
DOUBLE BAR D 229Z  
DOUBLE BAR D LOLITA 256X

- Full Fleck flush mates by Raptor
- Extra age bulls that are rugged and soggy made
- Lot 411 will be one of the highlights in the sale



ANCHOR D Raptor 392D - Sire



LFE FS Lewis 547E - Brother



DOUBLE BAR D 229Z - Dam to Lot 411 &amp; 412



Lot 412



**413****SBV MARK 708G**

1328244 SBV 708G Sept. 28, 2021

CE	BW	WW	YW	Milk	MCE	MWWT	API	TI
3.8	6.7	83.1	119.1	36.3	5.3	77.9	116.51	72.43

Full Blood  
Horned  
Red  
Red  
BW - 99  
ADJ WWT - 843  
JAN 14 WT - 1700

LFE LANDSLIDE 572Z  
LFE BREAKING CURFEW 511E  
LFE FS MISS BEAT 162W  
BAR 5 SA STIMULATION 415P  
SBV MERLOT 641Z  
NUG MERLOT 41X



- Big time performance on a very complete fall born Breaking Curfew calf
- Dam is the legend SBV 641Z with a maternal brother as Lot 406



SBV Mark 524H - Mat Brother



SBV Merlot 641Z - Dam

**414****SBV MARK 559H**

1328227 SBV 559H Jan 23, 2021

Full Blood  
Horned  
Red  
Red  
BW - 99  
ADJ WWT - 878  
ADJ YWT - 1457

LFE LANDSLIDE 572Z  
LFE BREAKING CURFEW 511E  
LFE FS MISS BEAT 162W  
LRX JUSTICE 33U  
SBV FARRAH 322X  
NUG FARRAH 693S

CE	BW	WW	YW	Milk	MCE	MWWT	API	TI
3.5	6.5	80.1	116	37	2.9	77.1	103.69	70.78



SBV Farrah 322X - Dam

- Dam SBV 322X is Justified's full sister.
- Big volume cow that improve fertility, milk and color

**415****SBV MARK 548H**

1328218 SBV 548H Jan. 17, 2021

Full Blood  
Horned  
Red  
Red  
BW - 102  
ADJ WWT - 882  
ADJ YWT - 1386

LFE LANDSLIDE 572Z  
LFE BREAKING CURFEW 511E  
LFE FS MISS BEAT 162W  
LFE WARRANT 526B  
SBV ROSINE 156D  
SIBELLE ROX 12A

CE	BW	WW	YW	Milk	MCE	MWWT	API	TI
2.4	6.4	78.9	108.9	36.7	3	76.2	112.25	69.35

**416****SBV MARK 550H**

1328220 SBV 550H Jan. 19, 2021

Full Blood  
Horned  
Red  
Red  
BW - 106  
ADJ WWT - 942  
ADJ YWT - 1440

LFE LANDSLIDE 572Z  
LFE BREAKING CURFEW 511E  
LFE FS MISS BEAT 162W  
NUG TOBY 219U  
NUG MISS 51X  
NUG RAMONA 580R

CE	BW	WW	YW	Milk	MCE	MWWT	API	TI
1.7	7.1	84.7	116	37.7	3.4	80.1	112.82	71.2



**417****SBV MARK 556H**

1330851 SBV 556H Jan. 21, 2021

CE	BW	WW	YW	Milk	MCE	MWWT	API	TI
1.6	6.7	85.3	120.5	35.2	3.7	77.9	110.69	72.41

- One of the most complete bulls to sell
- Dark cherry red, perfect pigment, scale crushing performance data
- Dam SBV 179D is a huge performing cow from the LFE 181T cow family, dark red with tons of milk



LFE Ms Beat 181T - Grand Dam



SBV Ms Beat 179D - Dam



Full Blood  
Horned  
Red  
BW - 100  
ADJ WWT - 932  
ADJ YWT - 1575

LFE LANDSLIDE 572Z  
LFE BREAKING CURFEW 511E  
LFE FS MISS BEAT 162W  
LFE CHALLENGER 580B  
SBV MS BEAT 179D  
SBV MS BEAT 711A

**418****SBV MARK 517H**

1328201 SBV 517H Jan. 7, 2021

CE	BW	WW	YW	Milk	MCE	MWWT	API	TI
3.2	6	78.2	108.9	35.3	3.3	74.4	107.64	69.03

- Unmatched birth to weaning spread
- Low birth bull, Dam is another daughter off the LFE 2008P cow family
- Big foot, pear shaped cow



LFE FS Choice 631R - Grand Dam



Full Blood  
Horned  
Red  
BW - 72  
ADJ WWT - 894  
ADJ YWT - 1411

LFE LANDSLIDE 572Z  
LFE BREAKING CURFEW 511E  
LFE FS MISS BEAT 162W  
LFE JUSTIFIED 7328X  
SBV CHOICE 710A  
LFE FS CHOICE 2008P

**419****SBV MARK 509H**

1328196 SBV 509H Jan. 4, 2021

CE	BW	WW	YW	Milk	MCE	MWWT	API	TI
2.2	6.8	79.2	112.9	37.4	3.2	77	106.3	68.48

Full Blood  
Horned  
Red  
BW - 96  
ADJ WWT - 909  
ADJ YWT - 1344

LFE LANDSLIDE 572Z  
LFE BREAKING CURFEW 511E  
LFE FS MISS BEAT 162W  
LFE JUSTIFIED 7328X  
SBV SPECIAL 631Z  
LFE FS SPECIAL 7W

**420****SBV MARK 512H**

1328197 SBV 512H Jan. 5, 2021

CE	BW	WW	YW	Milk	MCE	MWWT	API	TI
3.5	6.5	79.6	113.8	39.7	3.9	79.5	111.53	68.87

Full Blood  
Horned  
Red  
BW - 102  
ADJ WWT - 875  
ADJ YWT - 1417

LFE LANDSLIDE 572Z  
LFE BREAKING CURFEW 511E  
LFE FS MISS BEAT 162W  
NUG COLORADO 13U  
NUG ASHLEY 81Z  
NUG GOLDA 415P



**421****SBV MARK 551H**

1328221 SBV 551H Jan. 19, 2021

CE	BW	WW	YW	Milk	MCE	MWWT	API	TI
2.7	6.3	79.6	109.6	37.1	3.1	76.9	117.02	69.55

Full Blood  
Horned  
Red  
BW - 100  
ADJ WWT - 863  
ADJ YWT - 1417

LFE LANDSLIDE 572Z  
LFE BREAKING CURFEW 511E  
LFE FS MISS BEAT 162W  
BLACK GOLD EPIC 14Z  
BLACK GOLD AMNESIA 388  
MS BGS WAVERLY 50W



- One of our picks in the pen, dark cherry red with front end presence
- Poster boy for the Breaking Curfew sons
- Dam - is an Epic daughter purchased from Black Gold, dark pigment, huge volume with lots of milk



BLACK GOLD Amnesia 388 - Dam

FULLBLOOD

**422****SBV MARK 503H**

1328192 SBV 503H Jan. 1, 2021

BW - 105 ADJ WWT - 915 ADJ YWT - 1469

**423****SBV MARK 529H**

1328207 SBV 529H Jan 11, 2021

BW - 96 ADJ WWT - 840 ADJ YWT - 1306

CE	BW	WW	YW	Milk	MCE	MWWT	API	TI
2.8	5.7	75.9	103	36.4	3	74.4	104.75	66.62

Full Blood  
Horned  
Red

LFE LANDSLIDE 572Z  
LFE BREAKING CURFEW 511E  
LFE FS MISS BEAT 162W  
LFE JUSTIFIED 7328X  
SBV CHOICE 60C  
LFE FS CHOICE 631R

Lot 422

- High calibre tandem of flush mates
- Full sibs to last year's phenom Break'n All the Rules, he sold to Westman Farms and Kelly Battrum
- Break'n All the Rules went on to be calf champion in Louisville Kentucky last year
- Dam SBV 60C is a feminine cow with the best udder you can find, her daughter was \$21,000 female to sell at Checkers this past fall

SBV Ms Beat 632H - Sister  
Sold to Colton DravesSBV Choice 60C - Dam to Lot  
422 & 423

SBV Break'n All the Rules 535G - Full Brother



**424****SBV MARK 511H**

1328703 SBV 511H Jan. 5, 2021

Full Blood  
Horned  
Red  
BW - 98  
ADJ WWT - 906  
ADJ YWT - 1410

SOUTHSEVEN MR ADDNIS 96Z  
**BLACK GOLD MORTAL 55F**  
BLACK GOLD MSWHISPER 1088  
LFE WARRANT 526B  
**SBV ROXY 268E**  
SIBELLE ROX 12A

CE	BW	WW	YW	Milk	MCE	MWWT	API	TI
2.9	6.1	85	120.8	40	3.1	82.5	121.35	75.55



SBV Roxy 268E - Dam



BLACK GOLD Mortal 55F - Sire



- Real tanky moderate made calf. Sire is the up-and-coming Mortal bull from Black Gold
- Dam SBV 268E is the best young cow at the Mark ranch, perfect udder, medium frame, will enter the donor pen this spring

**425****SBV MARK 541H**

1328215 SBV 541H Jan. 15, 2021

Full Blood  
Horned  
Red  
BW - 95  
ADJ WWT - 900  
ADJ YWT - 1417

SOUTHSEVEN MR ADDNIS 96Z  
**BLACK GOLD MORTAL 55F**  
BLACK GOLD MSWHISPER 1088  
LFE LANDSLIDE 572Z  
**SBV PETRA 183D**  
LFE FS PETRA 166W

CE	BW	WW	YW	Milk	MCE	MWWT	API	TI
4.1	6	86	119.5	36.7	4	79.7	120.81	74.79

- Stout made, big ribbed, dark red, big scrotal
- Dam is a hard-working Landslide daughter with big feet and hair



SBV Petra 183D - Dam

**426****SBV MARK 557H**

1330852 SBV 557H Jan 22, 2021

Full Blood  
Polled  
Red  
BW - 98  
ADJ WWT - 850  
ADJ YWT - 1328

LFE LANDSLIDE 572Z  
**LFE EARTHQUAKE 528D**  
LFE FS PRINCESS 73U  
BAR 5 P SA EVOLUTION 418S  
**SBV PIXIE 794A**  
DLH MISS PIXIE 6P

CE	BW	WW	YW	Milk	MCE	MWWT	API	TI
2.7	6.1	74.4	105	34.4	2.8	71.6	109.56	65.2

- Polled Earthquake son, every calf that SBV 794A has had, has been polled
- Maternal brother sold to Wyatt Dahm in the 2019 Sale



SBV Pixie 794A - Dam





**427****SBV MARK 564H**

1328229 SBV 564H Jan. 26, 2021

CE	BW	WW	YW	Milk	MCE	MWWT	API	TI
4.8	4.7	70.5	104.8	37.8	2.4	73.1	117.23	67.97

Full Blood  
Horned  
Red  
BW - 95  
ADJ WWT - 860  
ADJ YWT - 1484

FGAF MAGNUM 901Z  
**CHERRY CREEK GLITZ 4D**  
BEE GLITTER 329A  
KHG HUMMER 104A  
**KHG REANNE 38C**  
KHG KRYSTA 52Z



- High ranking, proud fronted, Cherry Red Glitz
- Dam is a powerfully constructed Hummer daughter from Westgold Simmentals

**CHERRY CREEK Glitz 4D - Sire****KHG Reanne 38C - Dam****428****SBV MARK 515H**

1328199 SBV 515H Jan. 6, 2021

Full Blood  
Polled  
Red  
BW - 99  
ADJ WWT - 808  
ADJ YWT - 1312

FGAF MAGNUM 901Z  
**CHERRY CREEK GLITZ 4D**  
BEE GLITTER 329A  
LFE JUSTIFIED 7328X  
**SBV CHOICE 52C**  
LFE FS CHOICE 631R

CE	BW	WW	YW	Milk	MCE	MWWT	TI	API
4.4	4.3	68.1	99	35.9	1.3	69.9	64.66	110.08

**SBV Choice 52C - Dam**

- Polled, Glitz son. Very moderate, dark cherry red
- Dam is a full sister to SBV 60C who is the dam to Lots 422 and 423

**429****SBV MARK 553H**

1328222 SBV 553H Jan. 20, 2021

Full Blood  
Polled  
Red  
BW - 97  
ADJ WWT - 869  
ADJ YWT - 1405

FGAF MAGNUM 901Z  
**CHERRY CREEK GLITZ 4D**  
BEE GLITTER 329A  
IPU CLASSIC 1X  
**NUG HELGA 281D**  
NUG EXTRAFAGANT 98A

CE	BW	WW	YW	Milk	MCE	MWWT	TI	API
5.8	4.4	74.4	108.2	36.4	4.6	73.6	71.34	123.39

**CHERRY CREEK Glitz 4D - Sire**

- Another polled son of Glitz, very moderate, big scrotal
- Dam is a hard-working Classic female

FULLBLOOD



**430****SBV MARK 702G**

1328245 SBV 702G Sept. 22, 2021

Full Blood  
Horned  
Red  
BW - 94  
ADJ WWT - 781  
JAN 14 WT - 1700ELM TREE ZANDER 11Z  
**ELM TREE ENCOUNTER 18E**  
DFM UNA 827U  
LFE LANDSLIDE 572Z  
**SBV EMMA 89C**  
LFE FS EMMA 80T

CE	BW	WW	YW	Milk	MCE	MWWT	API	TI
4.8	4.5	71.8	96.4	37.1	3.7	73	107.55	65.09



ELM TREE Encounter 18E - Sire



SBV Emma 89C - Dam

- Big time power bull, heavy haired, dark red
- A Zander Grand Son. Zander was the most impressive bull to come out of Elm Tree Farms

**431****SBV MARK 711G**

1328242 SBV 711G Sept. 30, 2021

Full Fleck  
Horned  
Red  
BW - 95  
ADJ WWT - 796  
JAN 14 WT - 1580CAJUN NEFF  
**FSS MAXIMUS**  
KIMLAKE PETRA 203M  
MFI JEREMIAH 902Z  
**DOUBLE BAR D LOLITA 334Y**  
MFI LOLITA 3107

CE	BW	WW	YW	Milk	MCE	MWWT	API	TI
10.8	1.6	80.2	107.9	29.1	3.6	69.2	129.17	77.04



FSS Maximus - Sire



DOUBLE BAR D Lolita 334Y - Dam

- Long topped, power individual
- Smooth shouldered with extra calving ease

**432****SBV MARK 521H**

1328203 SBV 521H Jan. 8, 2021

Full Blood  
Horned  
Red  
BW - 90  
ADJ WWT - 787  
ADJ YWT - 1392FGAF MAGNUM 901Z  
**CHERRY CREEK GLITZ 4D**  
BEE GLITTER 329A  
LFE CHALLENGER 580B  
**SBV EMMA 281E**  
LFE FS EMMA 11X

CE	BW	WW	YW	Milk	MCE	MWWT	API	TI
4.4	3.8	59.5	88.6	36.5	2.1	66.3	109.65	62.13



SBV Emma 281E - Dam

**433****SBV MARK 549H**

1328219 SBV 549H Jan. 18, 2021

Full Blood  
Polled  
Red  
BW - 92  
ADJ WWT - 795  
ADJ YWT - 1267FGAF MAGNUM 901Z  
**CHERRY CREEK GLITZ 4D**  
BEE GLITTER 329A  
LFE JUSTIFIED 7328X  
**NUG MANDY 448B**  
BLCC MISS EVAN 76W

CE	BW	WW	YW	Milk	MCE	MWWT	API	TI
5.3	3.6	62.7	94.3	34.3	0.9	65.7	111.77	64.87



NUG Mandy 448B - Dam

FULLBLOOD





**434**

**SBV MARK 504H**

1328193 SBV 504H Jan. 1, 2021

Full Blood  
Horned  
Red  
BW - 104  
ADJ WWT - 844  
ADJ YWT - 1374

ANCHOR "T" LEGEND 7H  
LFE INSCRIPTION 570E  
SUNNY VALLEY RHEA 54C  
LFE CAMERO 510B  
SBV IDA 354F  
SBV IDA 684Z

CE	BW	WW	YW	Milk	MCE	MWWT	API	TI
4.5	6.4	75.6	107	35.4	4.5	73.2	110.53	67.25



SBV Ida 684Z - Grand Dam

- Inscription son off a first calf Camero daughter
- Nice uddered cow with the right bone structure



**435**

**SBV MARK 562H**

1328228 SBV 562H Jan. 25, 2021

Full Blood  
Polled  
Red  
BW - 94  
ADJ WWT - 910  
ADJ YWT - 1564

ANCHOR "T" LEGEND 7H  
LFE INSCRIPTION 570E  
SUNNY VALLEY RHEA 54C  
LFE HILTON 519A  
SBV SANTANA 368F  
KOP MS NORTHERN 190X

CE	BW	WW	YW	Milk	MCE	MWWT	API	TI
5	5.4	76.2	106.6	41.2	5.3	79.3	112.77	69.54



SBV Santana 368F - Dam

- SBV 562H show cases - massive birth to weaning to yearling spread, performance bull
- Inscription sired calves will work great on second calvers



**436**

**SBV MARK 506H**

1328194 SBV 506H Jan. 3, 2021

Full Blood  
Polled  
Red  
BW - 98  
ADJ WWT - 877  
ADJ YWT - 1394

ANCHOR "T" LEGEND 7H  
LFE INSCRIPTION 570E  
SUNNY VALLEY RHEA 54C  
LFE CAMERO 510B  
SBV DORTHY JANE 358F  
SBV DORTHY JANE 724A

CE	BW	WW	YW	Milk	MCE	MWWT	API	TI
4.9	6.5	77.9	112.3	36.9	3.5	75.9	112.32	68.44



LFE Camero 510B - Mat Grand Sire



**437****SBV MARK 567H**

1328230 SBV 567H Jan. 29, 2021

Purebred  
Horned  
Red  
BW - 95  
ADJ WWT - 923  
ADJ YWT - 1477

ANCHOR "T" LEGEND 7H  
LFE INSCRIPTION 570E  
SUNNY VALLEY RHEA 54C  
LFE CAMERO 510B  
SBV HILDA 342F  
NUG HILDA 953W

CE	BW	WW	YW	Milk	MCE	MWWT	API	TI
6.2	5.7	83.6	117.3	39.3	5.4	81.1	121.38	73.49



SBV Hilda 342F - Grand



NUG Hilda 953W - Grand Dam



- Big haired, soggy sided, dark red
- This guy is conservative at birth and will add pounds to your calf crop

- Dam was a member of the Louisville show team

**438****SBV MARK 516H**

1328200 SBV 516H Jan. 6, 2021

Full Blood  
Horned  
Red  
BW - 95  
ADJ WWT - 856  
ADJ YWT - 1405

ANCHOR "T" LEGEND 7H  
LFE INSCRIPTION 570E  
SUNNY VALLEY RHEA 54C  
LFE JUSTIFIED 7328X  
SBV MISS BEAT 288E  
LFE MISS BEAT 2008P

CE	BW	WW	YW	Milk	MCE	MWWT	API	TI
5.7	5.2	73.5	104.2	38.2	4.3	75	108.61	67.22



LFE Inscription 570E - Sire



- Inscription was purchased by 619 Land and Cattle in the 2018 Sale
- Dam is a Justified daughter out of the old LFE 2008P cow family, one of the best cow families at the farm



**KOTOWICH**  
Evergreen Farms Ltd.

With over 25 years of buying bulls from Lewis Farms and Mark Land & Cattle, we know they both do it right. The cattle trends and styles certainly have changed throughout the years, but these two operations are always on the leading edge of new and better genetics for their customer base, whether it be red, black, or traditional simmentals.

Here at Kotowich Evergreen Farms, we are dedicated to agriculture. It has been a pleasure to deal with Ken, Kyle, and the Lewis family as well as Lenny and his family knowing they are just as dedicated as we are to the ag sector and beef industry. The quality and respect runs deep cattle wise, and just as importantly, people wise too. Your support and friendship has been extremely valuable throughout the years, and we look forward to many more years of business and friendship.

All the best on your upcoming sale.

Sincerely,  
Kotowich Evergreen Farms



Dennis, Gisele, Megan,  
Brooke & Tyson



Paul, Sharon, Johnathan, Kristina &  
Rebecca and Grandma Eva



# Angus Yearling Bulls

## Reference Sires



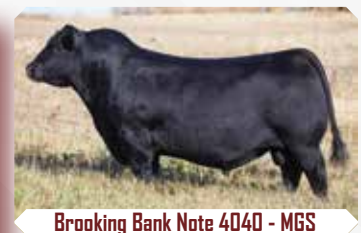
**500** **LFE BA LEWIS 811G**  
 2182257 LFE 811G Dec. 24 2019

CE	BW	WW	YW	MCE	Milk
2.5	4.2	70	117	5	16

Angus Black  
 ADJ WWT - 777  
 ADJ YWT - 1314

COLEMAN CHARLO 0256  
**S A V PRESIDENT 6847**  
 S A V BLACKCAP MAY 4136  
 BROOKING BANK NOTE 4040  
**LFE BA TIFANY 20750**  
 LFE BA TIFANY 2014B

- President son out of a superb Bank Note daughter, Grandam LFE 9T is a Density daughter who spent time in our donor pen 10 years ago
- 811G ranks in the top 2% of the breed for WW and top 5% for YW



ANGUS YEARLING



**501****LFE BA LEWIS 807G**

2185261 LFE 807G Dec. 23 2019

CE	BW	WW	YW	MCE	Milk
2.5	2.7	69	116	2.5	22

Angus  
Black  
BW - 86  
ADJ WWT - 862  
ADJ YWT - 1462

COLEMAN CHARLO 0256  
S A V **PRESIDENT 6847**  
S A V BLACKCAP MAY 4136  
BROOKING PROSECUTOR 222 DSF  
WHL **CLOVA PRIDE 1566C**  
THUNDER CREEK CLOVA PRIDE 24A

- An easy favorite among the angus division
- Backed by the tremendous Clova Pride female
- Her progeny have topped our angus female sale selling to Lazy MC and a Sroka son selling to Twin Spring Farms



LFE Clova Pride 23E - Sister



LFE BA Lewis 380F - Brother



WHL Clova Pride 1566C - Dam



ANGUS YEARLING

**502****LFE BA LEWIS 856G**

2185191 LFE 856G Dec. 30 2019

Angus  
Black  
BW - 97  
ADJ WWT - 747  
ADJ YWT - 1260

COLEMAN CHARLO 0256  
S A V **PRESIDENT 6847**  
S A V BLACKCAP MAY 4136  
BROOKING BANK NOTE 4040  
LFE BA **PRISSY 47E**  
LFE BA PRISSY 652Z

CE	BW
1.5	3.3

WW	YW
66	112

MCE	Milk
5	17

- Complete President son competing in the top 6% of the breed for WW and YW
- Maternal brother sold last spring to Sunnybend Colony



LFE BA Prissy 648U - MGD

**503****LFE BA LEWIS 814G**

2182258 LFE 814G Dec. 24 2019

Angus  
Black  
BW - 80  
ADJ WWT - 878  
ADJ YWT - 1465

COLEMAN CHARLO 0256  
S A V **PRESIDENT 6847**  
S A V BLACKCAP MAY 4136  
BROOKING BANK NOTE 4040  
LFE BA **DUCHESS 20E**  
LFE BA DUCHESS 123S

CE	BW
-0.5	3

WW	YW
63	98

MCE	Milk
4	15

- President x Bank Note combination. LFE 20E's Dam stayed with us for 12 years and had 11 calves
- 814G is a low birth power bull with big performance capabilities



LFE Duchess 123S-Grand Dam





*SAV Preseident 6847 x LFE BA Abigale 111Y Flush*



**Lot 504**



**Lot 506**



**Lot 508**

**504 LFE BA LEWIS 801G**  
 2185129 LFE 801G Dec. 19 2019  
 BW - 81 ADJ WWT - 756 ADJ YWT - 1343

**505 LFE BA LEWIS 827G**  
 2185161 LFE 827G Dec. 26 2019  
 BW - 83 ADJ WWT - 775 ADJ YWT - 1362

**506 LFE BA LEWIS 837G**  
 2185158 LFE 837G Dec. 28 2019  
 BW - 76 ADJ WWT - 803 ADJ YWT - 1290

**507 LFE BA LEWIS 355H**  
 2185307 LFE 355H Jan. 11 2020  
 BW - 80 ADJ WWT - 761 ADJ YWT - 1373

**508 LFE BA LEWIS 371H**  
 2185198 LFE 371H Jan. 15 2020  
 BW - 93 ADJ WWT - 808 ADJ YWT - 1383

**509 LFE BA LEWIS 823G**  
 2185163 LFE 823G Dec. 24 2019  
 BW - 75 ADJ WWT - 728 ADJ YWT - 1278

CE	BW	WW	YW	MCE	Milk
4	2.1	63	102	5	22

COLEMAN CHARLD 0256  
**S A V PRESIDENT 6847**  
 S A V BLACKCAP MAY 4136  
 S A V FINAL ANSWER 0035  
**LFE BA ABIGALE 111Y**  
 S A V ABIGALE 9142

Angus  
Black

- LFE 111Y is our most sought-after Angus donor
- She is a crowd favorite from summer visitors and her production record speaks volumes
- LFE 801 and LFE 837 are very complete bulls with function and style to burn

ANGUS YEARLING





LFE BA Abigale 111Y



S A V President 6847



Lot 507



S A V Final Answer 0035 - Dam Sire



LFE BA Lewis 833C - Brother



Lot 505

**510**

**LFE BA LEWIS 412H**

2182243 LFE 412H Jan. 31 2020

Angus  
Black

S A V PEDIGREE 4834  
**BOSS LAKE BONAFIDE 722E**

HF ECHO 206Y

S A V FINAL ANSWER 0035

**LFE BA ABIGALE 111Y**

S A V ABIGALE 9142

BW - 80  
ADJ WWT - 794  
ADJ YWT - 1294

CE	BW	WW	YW	MCE	Milk
5.5	1.3	58	92	8	22





**511 LFE BA LEWIS 816G**  
 2182259 LFE 816G Dec. 24 2019

Angus Black  
 BW - 80  
 ADJ WWT - 779  
 ADJ YWT - 1404

COLEMAN CHARLO 0256  
**COLEMAN BRAVO 6313**  
 COLEMAN DONNA 714  
 LFE SROKA 399D  
**LFE BA GEORGINA 632E**  
 LFE BA GEORGINA 144B

CE	BW	WW	YW	MCE	Milk
9.5	1.2	53	94	9.5	22



- Wish we had more of these Bravo sons again this year
- Sound to the ground, great feet, medium boned, soft made



**512 LFE BA LEWIS 843G**  
 2185166 LFE 843G Dec. 28 2019

Angus Black  
 BW - 108  
 ADJ WWT - 801  
 ADJ YWT - 1376

COLEMAN CHARLO 0256  
**S A V PRESIDENT 6847**  
 S A V BLACKCAP MAY 4136  
 CONNEALY IMPRESSION  
**SIX MILE MS QUALITY 603A**  
 SIX MILE MS QUALITY 205Y

CE	BW	WW	YW	MCE	Milk
4	2.7	72	116	4.5	20



- Donor SIXM 603A has elite status within our herd
- Her progeny are proud made big ribbed individuals. 5 daughters are retained in our herd and all still in production, this cow just works with whatever we throw at her
- LFE 843G is no different, big middle, smooth shoulder, wide hiped



We would like to extend a sincere thank you to the Koberstein family of Barrhead. Wade and his father Don purchased the pick of our 2020 born Simmental heifer calves in the New Year's Resolution Sale. As well a thanks goes to Nick and his father Brian on selecting the pick of our 2020 born Angus heifer calves in the Masterpiece sale this prior fall. These guys are shrewd cattlemen that have had and continue to have big success in the commercial sector. We wish these guys success with their selections.

**513 LFE BA LEWIS 852G**  
 2182261 LFE 852G Dec. 29 2019

Angus Black  
 BW - 83  
 ADJ WWT - 742  
 ADJ YWT - 1255

COLEMAN CHARLO 0256  
**S A V PRESIDENT 6847**  
 S A V BLACKCAP MAY 4136  
 S A V NET WORTH 4200  
**LFE BA DIAMOND MIST 74Z**  
 BIG SKY MAF DIAMOND MIST 300

CE	BW	WW	YW	MCE	Milk
2.5	2.1	61	100	4	20



**514****LFE BA LEWIS 382H**

2185176

LFE 382H

Jan. 20 2020

Angus  
Black

BW - 94

ADJ WWT - 833

ADJ YWT - 1358

RITO 707 OF IDEAL 3407 7075

S A V RENOWN 3439

S A V BLACKCAP MAY 4136

S A V BISMARCK 5682

S A V MADAME PRIDE 9803

S A V MADAME PRIDE 5290

CE	BW	WW	YW	MCE	Milk
3	1.9	65	114	4	23



SAV Madame Pride 9803 - Dam



SAV Madame Pride 5290 - G. Dam

- An embryo mating right out of the heart of the SAV program

- Madame Pride 9803 would be one of the highest touted females in SAV history. LFE 382G is smooth made, big ribbed, sleek fronted with the numbers and data to back it up

**515****LFE BA LEWIS 345H**

2185217

LFE 345H

Jan. 10 2020

Angus  
Black

BW - 95

ADJ WWT - 827

ADJ YWT - 1477

LFE BA LEWIS 395B

LFE SROKA 3990

LFE BA FLORESSA 652A

JL KELLY 2232

LFE BA RUBY 56D

LFE BA RUBY 55Z

CE	BW	WW	YW	MCE	Milk
4.5	2.2	57	102	8	25

- Stout topped, sweeping rib cage and backed by our best Kelly daughters

- Maternal brothers at work for Mac Horner of North Dakota and Don Schultz



LFE BA Ruby 56D - Dam

**516****LFE BA LEWIS 435H**

2185984

LFE 435H

Feb. 09 2020

Angus  
Black

BW - 86

ADJ WWT - 767

ADJ YWT - 1329

S A V RENOWN 3439

LFE BA LEWIS 3005E

GEIS LADY RUTH 174'12

RED LFE AYERS ROCK 416X

RED LFE LADY 2010B

RED LFE LADY 2028Z

CE	BW	WW	YW	MCE	Milk
5	0.8	50	83	6	17

- Moderate made, black, red carrier

- Dam is a low set Ayers Rock daughter



LFE BA Lewis 3005E - Sire





**517****LFE BA LEWIS 829G**

2182253 LFE 829G Dec. 26 2019

CE	BW	WW	YW	MCE	Milk
3	2.3	60	99	5	21

Angus  
Black  
BW - 79  
ADJ WWT - 748  
ADJ YWT - 1285

S A V PEDIGREE 4834  
**BOSS LAKE BONAFIDE 722E**  
HF ECHO 206Y  
MOHNEN SOUTH DAKOTA 402  
**LFE BA JESTRESS 10E**  
LFE BA JESTRESS 72B

- Smooth made Bonafide son who is correct in his structure
- Grandam LFE 72B would be in the top 4 of 5 angus cows to ever walk Lewis Farms
- LFE 72B's Sensation son sold to Parkview Farms last spring



Boss Lake Bonafide 722E - Sire



LFE BA Jestress 72B - Grand Dam

ANGUS YEARLING

**518****LFE BA LEWIS 804G**

2182256 LFE 804G Dec. 21 2019

Angus  
Black  
BW - 89  
ADJ WWT - 819  
ADJ YWT - 1358

S A V PEDIGREE 4834  
**BOSS LAKE BONAFIDE 722E**  
HF ECHO 206Y  
S A V FINAL ANSWER 0035  
**LFE BA EULIMA 66B**  
LFE BA EULIMA 163Z

CE	BW	WW	YW	MCE	Milk
6	2.6	58	95	8	22



LFE BA Eulima 66B - Dam

- Biggest framed bull in the Angus division
- Dam LFE 66B is an elite Final Answer daughter with 4 daughters retained in our herd

**519****LFE BA LEWIS 800G**

2182255 LFE 800G Dec. 19 2019

Angus  
Black  
BW - 80  
ADJ WWT - 845  
ADJ YWT - 1345

LCC NEW STANDARD  
**R B ACTIVE DUTY 0010X**  
B A LADY 6807 305  
S A V SENSATION 5615  
**LFE BA DUCHESS 608F**  
LFE BA DUCHESS 168W

CE	BW	WW	YW	MCE	Milk
4	2	51	93	7	18

**520****LFE BA LEWIS 419H**

2185165 LFE 419H Feb. 02 2020

Angus  
Black  
BW - 95  
ADJ WWT - 821  
ADJ YWT - 1412

S A V RENOWN 3439  
**LFE BA LEWIS 3005E**  
GEIS LADY RUTH 174'12  
MOHNEN SOUTH DAKOTA 402  
**LFE BA LUCY 629D**  
SOUTHERN OX LUCY 43R

CE	BW	WW	YW	MCE	Milk
1.5	2.2	57	95	4.5	21



**521****LFE BA LEWIS 845G**

2182260 LFE 845G Dec. 29 2019

CE	BW	WW	YW	MCE	Milk
5	3.7	67	107	8	23

Angus  
Black  
BW - 92  
ADJ WWT - 873  
ADJ YWT - 1411

LFE BA LEWIS 395B  
**LFE SROKA 399D**  
LFE BA FLORESSA 652A  
R B ACTIVE DUTY 0010X  
**LFE BA JENNIFER 10C**  
LFE BA JENNIFER 66A

- Maybe the second best bull in this yearling division
- Huge ribbed, sound on the move
- Sroka progeny are known for impeccable feet and show a high regard for maternal merit



LFE BA Lewis 815F - Brother



LFE BA Lewis 388G - Brother



LFE BA Jennifer 10C - Dam

**522****LFE BA LEWIS 408H**

2182241 LFE 408H Jan. 29 2020

Angus  
Black  
BW - 89  
ADJ WWT - 759  
ADJ YWT - 1271

S A V PEDIGREE 4834  
**BOSS LAKE BONAFIDE 722E**  
HF ECHO 206Y  
LFE BA LEWIS 833Z  
**LFE BA MATILDA 2053D**  
LFE BA MATILDA 2147W

CE	BW
3.5	4
WW	YW
50	85
MCE	Milk
7.5	18

- Longer bodied, smooth front third, carries his head high and proud
- It's a shame we didn't do a better job this past summer taking cow pics, LFE 2053D is a front pasture cow that needs to be seen

**523****LFE BA LEWIS 383H**

2182238 LFE 383H Jan. 20 2020

Angus  
Black  
BW - 89  
ADJ WWT - 769  
ADJ YWT - 1356

S A V PEDIGREE 4834  
**BOSS LAKE BONAFIDE 722E**  
HF ECHO 206Y  
JL KELLY 223Z  
**LFE BA CHARMER 2122D**  
LFE BA CHARMER 656Z

CE	BW
4.5	3.8
WW	YW
59	102
MCE	Milk
6.5	19

**524****LFE BA LEWIS 416H**

2182244 LFE 416H Feb. 01 2020

Angus  
Black  
BW - 83  
ADJ WWT - 770  
ADJ YWT - 1333

S A V PEDIGREE 4834  
**BOSS LAKE BONAFIDE 722E**  
HF ECHO 206Y  
JL KELLY 223Z  
**LFE BA QUALITY 50E**  
SIX MILE MS QUALITY 603A

CE	BW
3.5	2.7
WW	YW
66	108
MCE	Milk
5	21

ANGUS YEARLING





• A crowd favorite, maybe the best Bonafide to sell depending on the type your aiming for. Very complete, very attractive. Has the foot quality and scrotal size to be a next level bull  
 • Dam and Grand Dam are front pasture cows. Ask Kyle for a cell phone pic of LFE 34D



*New Sire*



*JJP Game Night 74G*

## 525 LFE BA LEWIS 423H

2182246 LFE 423H Feb. 05 2020

Angus Black  
 BW - 81  
 ADJ WWT - 741  
 ADJ YWT - 1279

S A V PEDIGREE 4834  
**BOSS LAKE BONAFIDE 722E**  
 HF ECHO 206Y  
 LFE BA LEWIS 826A  
**LFE BA ERICA 34D**  
 LFE BA ERICA 41B

CE	BW	WW	YW	MCE	Milk
0.5	3.2	63	106	6	22



LFE BA Erica 51T - Grand Dam



Boss Lake Bonafide 722E - Sire

## 526 LFE BA LEWIS 436H

2182262 LFE 436H Feb. 09 2020

Angus Black  
 BW - 88  
 ADJ WWT - 822  
 ADJ YWT - 1384

S A V PEDIGREE 4834  
**BOSS LAKE BONAFIDE 722E**  
 HF ECHO 206Y  
 BROOKING BANK NOTE 4040  
**LFE BA QUEEN 2127D**  
 LFE BA QUEEN 2045B

CE	BW	WW	YW	MCE	Milk
2.5	4.4	66	109	7.5	17



SAV Harvester 0338 - MGS

- Bonafide x Harvester combination we have ranked high
- Dam is power cow with a great udder and superb foot quality

## 527 LFE BA LEWIS 401H

2182239 LFE 401H Jan. 25 2020

Angus Black  
 BW - 90  
 ADJ WWT - 776  
 ADJ YWT - 000

S A V PEDIGREE 4834  
**BOSS LAKE BONAFIDE 722E**  
 HF ECHO 206Y  
 S00 LINE LEGACY 7019  
**LFE BA LASS 71A**  
 S00 LINE MCHENERY LASS 7269

CE	BW	WW	YW	MCE	Milk
3	3.6	55	93	7	18

## 528 LFE BA LEWIS 436H

2182262 LFE 436H Feb. 9 2020

Angus Black  
 BW - 88  
 ADJ WWT - 822  
 ADJ YWT - 1384

S A V PEDIGREE 4834  
**BOSS LAKE BONAFIDE 722E**  
 HF ECHO 206Y  
 BROOKING BAND NOTE 4040  
**LFE BA QUEEN 2127D**  
 LFE BA QUEEN 2045B

CE	BW	WW	YW	MCE	Milk
3	3.6	55	93	7	18



# 2020 Sale Highlights





# Angus Extra Age Bulls



## Reference Sires



**600 LFE BA LEWIS 3003G**  
 2185325 LFE 3003G April 24 2019

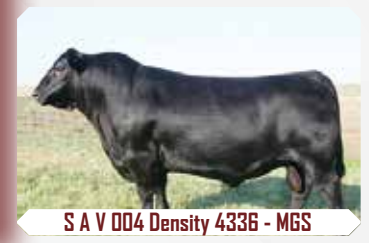
CE	BW	WW	YW	MCE	Milk
7.5	1.5	52	93	8	24

Angus Black  
 LFE BA LEWIS 395B  
**LFE SROKA 399D**  
 LFE BA FLORESSA 652A  
 S A V HARVESTOR 0338  
**LFE BA TIFANY 2014B**  
 WIL-DORR 404P TIFANY 9T

ANGUS X-AGE



- Low birth, attractive made Sroka son. This guy has all the talent behind him in his pedigree
- Maternal sister's son sells as Lot 500





**601****LFE BA LEWIS 3071G**

2185128

LFE 3071G

May 12 2019

Angus  
Black  
BW - 79  
ADJ WWT - 678  
Jan 15 - 1570

LFE BA LEWIS 395B  
**LFE SROKA 399D**  
LFE BA FLORESSA 652A  
SDO LINE MOTIVE 9016  
**BROOKING MAUREEN EMILE 6169**  
BAX MAUREEN EMILIE 243-559

CE	BW	WW	YW	MCE	Milk
----	----	----	----	-----	------

10	-0.1	44	78	7.5	24
----	------	----	----	-----	----

- Very complete bull stemming from the Maureen Emile cow family from Brooking Angus
- JST 169D was purchased at the Motive Event in 2017



Brooking Maureen Emile 6169 - Dam

**602****LFE BA LEWIS 3033G**

Pending

LFE 3033G

May 5, 2019

Angus  
Black  
BW - 80  
ADJ WWT - 838  
Jan 15 - 1760

LFE BA LEWIS 395B  
**LFE SROKA 399D**  
LFE BA FLORESSA 652A  
S A V BISMARK 5682  
**LFE BA MATILDA 2099A**  
LFE BA MATILDA 2095Y

CE	BW	WW	YW	MCE	Milk
----	----	----	----	-----	------

12	-0.7	49	85	13	22
----	------	----	----	----	----



LFE BA Lewis 3189D - Mat Brother



LFE BA Lewis 3002F - Mat Brother



- Soggy made, easy fleshing Sroka son, multi-purpose bull that can be used on heifers or cows. Maternal brothers at work for Plateau Cattle Co and Burnell Martin

**603****LFE BA LEWIS 3243G**

2181861

LFE 3243G

June 13, 2019

Angus  
Black  
BW - 80  
ADJ WWT - 724  
Jan 15 - 1500

LFE BA LEWIS 395B  
**LFE SROKA 399D**  
LFE BA FLORESSA 652A  
KE BULLSEYE  
**LFE BA QUEEN 2103E**  
LFE BA QUEEN 636A

CE	BW	WW	YW	MCE	Milk
----	----	----	----	-----	------

1	4.7	60	102	4.5	28
---	-----	----	-----	-----	----

- Sroka son that follows the same pattern as his brothers
- Low birth, big growth. Off a first calf heifer



LFE Queen 221T - Grand Dam







604

**LFE BA LEWIS 3042G**

2185216 LFE 3042G May 08 2019

Angus  
Black  
BW - 84  
ADJ WWT - 770  
Jan 15 - 1810

LFE BA LEWIS 395B  
**LFE SROKA 399D**  
LFE BA FLORESSA 652A  
JL KELLY 2232  
**LFE BA BLOSSOM 2063B**  
LFE BA BLOSSOM 2010X

CE	BW	WW	YW	MCE	Milk
7.5	0.7	49	89	7.5	21



JL Kelly 2232 - Dam Sire

- Elite son of Sroka, longer made, big bellied
- Dam LFE 2063B is a front pasture Kelly daughter



605

**LFE BA LEWIS 3158G**

2185246 LFE 3158G May 24 2019

Angus  
Black  
BW - 86  
ADJ WWT - 750  
Jan 15 - 1670

LFE BA LEWIS 395B  
**LFE SROKA 399D**  
LFE BA FLORESSA 652A  
S00 LINE LEGACY 7019  
**LFE BA ZARA 2050B**  
LFE BA ZARA 2051Y

CE	BW	WW	YW	MCE	Milk
10.5	-1.9	42	75	11	22



LFE BA Lewis 3021E - Mat Brother

- Sroka was our high selling angus bull in our 2017 sale. He has made big contributions to our angus herd in a short period of time
- Maternal brothers at work for Kamieniecki Farms and Chris Hannas



606

**LFE BA LEWIS 3113G**

2185273 LFE 3113G May 18 2019

Angus  
Black  
BW - 79  
ADJ WWT - 671  
Jan 15 - 1720

LFE BA LEWIS 395B  
**LFE SROKA 399D**  
LFE BA FLORESSA 652A  
S A V BISMARCK 5882  
**LFE BA STYLISH LADY 2021A**  
LFE BA STYLISH LADY 2001Y

CE	BW	WW	YW	MCE	Milk
13	-1.5	47	83	12.5	21



LFE BA Lewis 3005D - Mat Brother

- A maternal brother at work for Lakeland College
- Smooth shouldered, calving ease bull

ANGUS X-AGE



**607****LFE BA LEWIS 3215G**

2186257 LFE 3215G May 12 2019

Angus  
Black  
BW - 79  
ADJ WWT - 703  
Jan 15 - 1800

LFE BA LEWIS 395B  
**LFE SROKA 399D**  
LFE BA FLORESSA 652A  
SAV RENOWN 3439  
**LFE BA PRIDEMERE 2009E**  
LFE BA PRIDEMERE 2166A

CE	BW
11	-0.6
WW	YW
51	91
MCE	Milk
11	25

- Multi purpose Sroka son that can meet the needs on heifers or cows
- Low birth, athletic and natural fleshing ability



SAV Renown 3439 - Dam Sire

**608****LFE BA LEWIS 3028G**

2185125 LFE 3028G May 05 2019

Angus  
Black  
BW - 75  
ADJ WWT - 657  
Jan 15 - 1860

LFE BA LEWIS 395B  
**LFE SROKA 399D**  
LFE BA FLORESSA 652A  
PEAK DOT IRON MOUNTAIN IIIY  
**LFE BA QUEEN 213IC**  
LFE BA QUEEN 236T

CE	BW
6.5	1.2
WW	YW
48	89
MCE	Milk
9.5	20

- Low birth, moderate in stature
- Brother purchased by Brent Wagner last spring



LFE BA Queen 236T - Grand Dam

**609****LFE BA LEWIS 3250G**

2181945 LFE 3250G June 15 2019

Angus  
Black  
BW - 82  
ADJ WWT - 643  
Jan 15 - 1550

S A V PEDIGREE 4834  
**BOSS LAKE BONAFIDE 722E**  
HF ECHO 206Y  
S A V HARVESTOR 0338  
**LFE BA QUEEN 2045B**  
LFE BA QUEEN 2155W

CE	BW
3.5	4
WW	YW
60	100
MCE	Milk
6	21

- First of the Bonafide sons, this is a series of brothers we are excited to show case
- Maternal brother at work for Plateau Cattle Co



LFE BA Lewis 3017E - Mat Brother

**610****LFE BA LEWIS 3010G**

2185323 LFE 3010G April 29 2019

Angus  
Black  
BW - 87  
ADJ WWT - 791  
Jan 15 - 1770

RED VGW GAME PLAN 816  
**BOSS LAKE BONAFIDE 722E**  
HF ECHO 206Y  
S A V 707 RITO 9969  
**LFE BA DUCHESS 2015A**  
LFE BA DUCHESS 107U

CE	BW
2.5	3
WW	YW
53	90
MCE	Milk
7	18

- Sire Bonafide was purchased at Agribition with Miller Wilson Angus
- Bonafide is a foot improver, docile creature, who's females will be his biggest legacy



LFE Duchess 123S - Grand Dam







**611 LFE BA LEWIS 3014G**  
 2185188 LFE 3014G April 29 2019

Angus Black  
 BW - 87  
 ADJ WWT - 770  
 Jan 15 - 1780

S A V PEDIGREE 4834  
**BOSS LAKE BONAFIDE 722E**  
 HF ECHO 206Y  
 S A V BISMARCK 568Z  
**LFE BA BLACKCAP 602X**  
 LFE BA BLACKCAP 600U

CE	BW	WW	YW	MCE	Milk
8	1.7	59	96	9.5	20



LFE Blackcap 602X - Dam

- One of the most complete Angus bulls to sell
- Proven Bismarck Dam



**612 LFE BA LEWIS 3024G**  
 2185271 LFE 3024G May 03 2019

Angus Black  
 BW - 75  
 ADJ WWT - 732  
 Jan 15 - 1680

S A V PEDIGREE 4834  
**BOSS LAKE BONAFIDE 722E**  
 HF ECHO 206Y  
 S00 LINE LEGACY 7019  
**LFE BA GRACE 2055A**  
 LFE BA GRACE 51X

CE	BW	WW	YW	MCE	Milk
5.5	2.3	60	99	8.5	19



LFE Grace 51X - Grand Dam

- Easy at birth, attractive and functional
- Granddam LFE 51X was previous Farm Fair division winner



**613 LFE BA LEWIS 3022G**  
 2185213 LFE 3022G May 03 2019

Angus Black  
 BW - 77  
 ADJ WWT - 726  
 Jan 15 - 1760

S A V PEDIGREE 4834  
**BOSS LAKE BONAFIDE 722E**  
 HF ECHO 206Y  
 S A V RESOURCE 144I  
**LFE BA ZARA 2012C**  
 LFE BA ZARA 2051Y

CE	BW	WW	YW	MCE	Milk
9.5	0.8	54	92	9.5	16



SAV Resource 144I- Mat Grand Sire

- Calving ease specialist, competing in the top 9% of the breed for CE and BW



**614****LFE BA LEWIS 3249G**

2181944 LFE 3249G June 15 2019

Angus  
Black  
BW - 76  
ADJ WWT - 756  
Jan 15 - 1550

S A V PEDIGREE 4834  
**BOSS LAKE BONAFIDE 722E**  
HF ECHO 206Y  
PEAK DOT IRON MOUNTAIN IIIY  
**LFE BA DYNA QUEEN 2178B**  
LFE BA DYNA QUEEN 2072Y

CE	BW	WW	YW	MCE	Milk
5	3.1	60	104	9.5	18

- Low set, moderate made Bonafide son
- Maternal brothers at work for Kummer Farms, Woodwind Ranching and Elite Agri Services

**BOSS LAKE Bonafide 722E - Sire****615****LFE BA LEWIS 3244G**

2185254 LFE 3244G June 13 2019

Angus  
Black  
BW - 80  
ADJ WWT - 707  
Jan 15 - 1600

S A V PEDIGREE 4834  
**BOSS LAKE BONAFIDE 722E**  
HF ECHO 206Y  
S A V HARVESTOR 0338  
**LFE BA ABIGALE 2011C**  
S A V ABIGALE 9142

CE	BW	WW	YW	MCE	Milk
1	4.1	65	107	5.5	21

- LFE 111Y is a sister to Dam LFE 2011C. LFE 111Y is the best angus cow in our possession
- Maternal brother resides at Mike Kamieniecki's

**LFE Abigale 111Y - Sister**





**616 LFE BA LEWIS 3090G**  
 2185309 LFE 3090G May 14 2019

Angus  
 Black  
 BW - 79  
 ADJ WWT - 669  
 Jan 15 - 1610

MOHNEN SOUTH DAKOTA 402  
**LFE ALBERTA 809C**  
 LFE BA COUNTESS 607X  
 SDD LINE LEGACY 7019  
**LFE BA ERICA 2047A**  
 LFE BA ERICA 110T

CE	BW
0.5	3
WW	YW
52	94
MGE	Milk
3	18

- Grand Dam LFE 110T once ruled the Sangudo hills
- Maternal brothers at work for Sunny side Farming, Granum Colony and Hawkeye Ranching Company



LFE Erica 110T - Grand Dam



**617 LFE BA LEWIS 3016G**  
 Unregistered LFE 3016G April 30, 2019

Angus  
 Black  
 BW - 80  
 ADJ WWT - 705  
 Jan 15 - 1740

MOHNEN SOUTH DAKOTA 402  
**LFE ALBERTA 809C**  
 LFE BA COUNTESS 607X  
 S A V RENDOWN 3439  
**LFE BA ERICA 2003E**  
 LFE BA ERICA 2020Z

CE	BW
5	1
WW	YW
54	100
MGE	Milk
5	23

- South Dakota Grand Son stemming from a 13-year-old cow
- Longevity and fertility are proven through the years with this guy



**618 LFE BA LEWIS 3117G**  
 Pending LFE 3117G May 17, 2019

Angus  
 Black  
 BW - 84  
 ADJ WWT - 739  
 Jan 15 - 1640

MOHNEN SOUTH DAKOTA 402  
**LFE ALBERTA 809C**  
 LFE BA COUNTESS 607X  
 MCATL REACHOUT 150-1746  
**LFE BA JESTRESS 2201A**  
 LFE BA ESSENCE 2099U

CE	BW
5	1.6
WW	YW
52	92
MGE	Milk
6	26

- Big time herd bull with power and substance
- Maternal brother at work for Burnell Martin



**619 LFE BA LEWIS 3175G**  
 2185266 LFE 3175G June 26 2019

Angus  
 Black  
 BW - 79  
 ADJ WWT - 795  
 Jan 15 - 1530

MOHNEN SOUTH DAKOTA 402  
**LFE ALBERTA 809C**  
 LFE BA COUNTESS 607X  
 JL KELLY 2232  
**LFE BA ESSENCE 2078C**  
 LFE BA ESSENCE 2099U

CE	BW
3.5	1.5
WW	YW
51	88
MGE	Milk
4	22

- Moderate in stature, an Alberta son that fills an order
- Hard to fault, low birth smooth made



JL Kelly 2232 - Mat. Grand Sire



**620****LFE BA LEWIS 3011G**

2185171 LFE 3011G April 29 2019

CE	BW	WW	YW	MCE	Milk
2.5	2.3	57	100	4	22

Angus  
Black  
BW - 85  
ADJ WWT - 739  
Jan 15 - 1790

S A V REGISTRY 2831  
S A V SENSATION 5615  
S A V BLACKCAP MAY 4136  
S A V BISMARCK 5682  
LFE BA JENNIFER 66A  
LFE BA JENNIFER 157Y



SAV Sensation 5615 - Sire

- One of the highest-ranking Angus bulls in this sale
- Dam LFE 66A is a production highlight, daughter LFE 10C has been a mainstay in the donor pen
- 3011G has mass, scale crushing performance data and an elite maternal pedigree



LFE BA Lewis 3007F - Full Brother



LFE Jennifer 10C - Sister

**621****LFE BA LEWIS 3000G**

2185268 LFE 3000G April 20 2019

Angus  
Black  
BW - 78  
ADJ WWT - 690  
Jan 15 - 1640

S A V REGISTRY 2831  
S A V SENSATION 5615  
S A V BLACKCAP MAY 4136  
S A V FINAL ANSWER 0035  
LFE BA PRAIRE PRIDE 614Y  
JL MS PRAIRE PRIDE 0107

CE	BW	WW	YW	MCE	Milk
5.5	1.2	58	101	5	20

- Low set Sensation, backed by a proven Final Answer daughter
- Maternal brothers purchased by Anchor Lazy U, Wayne Rinas, Porter Ranches and Stewart Ranch



LFE Praire Pride 614Y - Dam

**622****LFE BA LEWIS 3125G**

2185330 LFE 3125G May 20 2019

Angus  
Black  
BW - 75  
ADJ WWT - 681  
Jan 15 - 1560

MOHNEN SOUTH DAKOTA 402  
LFE ALBERTA 809C  
LFE BA COUNTESS 607X  
S A V CUTTING EDGE 4857  
S A V MADAME PRIDE 6267  
S A V MADAME PRIDE 2289

CE	BW	WW	YW	MCE	Milk
6	1.6	49	89	7	20

- Hairy made Alberta son, low birth
- Cutting Edge sired Dam was purchased as a calf from SAV



SAV Cutting Edge 4857 - Mat Sire







## 623 LFE BA LEWIS 3272G

2185695 LFE 3272G June 25 2019

Angus  
Black  
BW - 86  
ADJ WWT - 646  
Jan 15 - 1660

S A V HARVESTOR 0338  
**LFE BA LEWIS 353B**  
SOD LINE MCHENERY LASS 7269  
R B ACTIVE DUTY 0010X  
**LFE BA QUEEN 47D**  
LFE BA QUEEN 156B

CE	BW
0.5	4.4
WW	YW
56	99
MCE	Milk
4.5	20



RB Active Duty 0010X - Mat. Sire

- Top ranking 353B son
- Sire LFE 353B sold to Anchor Lazy U in the 2015 Sale.
- He has bred a lot of cows between the two places



## 624 LFE BA LEWIS 3159G

2185249 LFE 3159G May 24 2019

Angus  
Black  
BW - 84  
ADJ WWT - 763  
Jan 15 - 1740

S A V HARVESTOR 0338  
**LFE BA LEWIS 353B**  
SOD LINE MCHENERY LASS 7269  
S A V FINAL ANSWER 0035  
**LFE BA MATILDA 2095Y**  
LFE BA MATILDA 2147W

CE	BW
5.5	2
WW	YW
43	76
MCE	Milk
8	21



LFE 3140D - Brother

- Dam LFE 2095Y has 8 calves on the ground, her first is the mother to Lot 602
- Maternal brothers at work for Anchor Lazy U and Double F Farms



## 625 LFE BA LEWIS 3252G

2185693 LFE 3252G June 17 2019

Angus  
Black  
BW - 88  
ADJ WWT - 665  
Jan 15 - 1520

S A V HARVESTOR 0338  
**LFE BA LEWIS 353B**  
SOD LINE MCHENERY LASS 7269  
S A V RESOURCE 1441  
**LFE BA CHINDOK 2023C**  
LFE BA CHINDOK 625U

CE	BW
3	3.7
WW	YW
53	98
MCE	Milk
6	19



LFE Lewis 3167F - Brother

- Long spined, big middled 353B son
- Maternal son resides at Brent Wagner's



## 626 LFE BA LEWIS 3105G

2185282 LFE 3105G May 17 2019

Angus  
Black  
BW - 90  
ADJ WWT - 608  
Jan 15 - 1550

MOHLEN SOUTH DAKOTA 402  
**LFE ALBERTA 809C**  
LFE BA COUNTESS 607X  
SOD LINE LEGACY 7019  
**LFE BA QUEEN 2108Y**  
4DJ NATALIE QUEEN 5N

CE	BW
7	0.3
WW	YW
49	84
MCE	Milk
5.5	19



LFE Alberta 809C - Sire

- Alberta son that competes in the top 15% of the breed for CE and BW
- 9-year-old dam has registered 7 calves



**627****LFE BA LEWIS 3251G**

2185694 LFE 3251G June 17 2019

Angus  
Black  
BW - 84  
ADJ WWT - 692  
Jan 15 - 1510

S A V HARVESTOR 0338  
**LFE BA LEWIS 353B**  
S00 LINE MCHENERY LASS 7269  
S A V HARVESTOR 0338  
**LFE BA MS ALTARIO 25B**  
LFE BA MS ALTARIO 620R

CE	BW
-4	6.2
WW	YW
55	95
MCE	Milk
3	17

- Dam and Grand Dam are high quality cows that produce a good calf consecutively year after year
- Maternal brother residing at Joe Howlett's



LFE Ms Altario 620R - Grand Dam

**628****LFE BA LEWIS 3076G**

2185229 LFE 3076G May 13 2019

Angus  
Black  
BW - 78  
ADJ WWT - 666  
Jan 15 - 1560

S A V HARVESTOR 0338  
**LFE BA LEWIS 353B**  
S00 LINE MCHENERY LASS 7269  
PEAK DOT IRON MOUNTAIN IIIY  
**LFE BA TIBBIE 2084A**  
LFE BA TIBBIE 2026W

CE	BW
0.5	4.7
WW	YW
56	102
MCE	Milk
3.5	21

- Moderate made, sound to the ground
- Anytime you have Density on the bottom side is an added bonus



S A V Density - Mat Grand Sire

**629****LFE BA LEWIS 3240G**

Pending LFE 3042G June 10, 2019

Angus  
Black  
BW - 84  
ADJ WWT - 664  
Jan 15 - 1510

S A V HARVESTOR 0338  
**LFE BA LEWIS 353B**  
S00 LINE MCHENERY LASS 7269  
S A V HARVESTOR 0338  
**LFE BA JESTRESS 49B**  
LFE BA JESTRESS 186T

CE	BW
-0.5	5.1
WW	YW
51	89
MCE	Milk
4.5	20.5

- Middle of the road 353B son
- Dam LFE 49B is a big scaled Harvestor daughter with sons at work for Plateau Cattle Co



SAV Harvestor 0338 - Grand Sire

**630****LFE BA LEWIS 3222G**

2185104 LFE 3222G June 05 2019

Angus  
Black  
BW - 80  
ADJ WWT - 698  
Jan 15 - 1550

S A V HARVESTOR 0338  
**LFE BA LEWIS 353B**  
S00 LINE MCHENERY LASS 7269  
BROOKING BANK NOTE 4040  
**LFE BA ZARA 2090D**  
LFE BA ZARA 2033B

CE	BW
3	3.1
WW	YW
52	92
MCE	Milk
7.5	17

- Another calving ease option from 353B
- Bank Note Dam



EA Rose 918 - Mat. Grand Dam







**631 LFE BA LEWIS 3040G**  
 2185206 LFE 3040G May 07 2019

Angus Black  
 BW - 75  
 ADJ WWT - 754  
 Jan 15 - 1810

COLEMAN CHARLO 0256  
**COLEMAN BRAVO 6313**  
 COLEMAN DONNA 714  
 BROOKING BANK NOTE 4040  
**LFE BA CHINOOK 2055E**  
 LFE BA CHINOOK 2013C

CE	BW	WW	YW	MCE	Milk
9	0.6	57	100	10	16



Brooking Bank Note 4040 - Grand Sire

- Lead Bravo son in the extra age division
- LFE 3040G competes in the top 20% or better for all calving and performance EPD's



**632 LFE BA LEWIS 3062G**  
 Pending LFE 3062G May 11 2019

Angus Black  
 BW - 75  
 ADJ WWT - 769  
 Jan 15 - 1500

COLEMAN CHARLO 0256  
**COLEMAN BRAVO 6313**  
 COLEMAN DONNA 714  
 KR BULLSEYE 3451  
**LFE BA BLACKCAP 2136E**  
 LFE BA BLACKCAP 123Y

CE	BW	WW	YW	MCE	Milk
5	2.5	59	103	9.5	23.5



RCC 492U - Grand Dam

- Moderate in stature, safe for the heifer pen



**633 LFE BA LEWIS 3216G**  
 2185102 LFE 3216G June 04 2019

Angus Black  
 BW - 84  
 ADJ WWT - 836  
 Jan 15 - 1630

S A V HARVESTOR 0338  
**LFE BA LEWIS 353B**  
 SOD LINE MCHENERY LASS 7269  
 ATLASTA FRONTIER 11P  
**LFE BA QUEEN 236T**  
 SUNNY QUEEN 049L

CE	BW	WW	YW	MCE	Milk
-1	4.2	37	69	2.5	19



LFE Queen 236T - Dam

- Dam LFE 236T is one of the oldest Angus cows in our herd
- Maternal brothers selling to Michael Lutz, Cattleland Feed Yards and Darren Hawkes



**634****LFE BA LEWIS 3207G**

2181859 LFE 3207G June 02 2019

Angus  
Black  
BW - 73  
ADJ WWT - 624  
Jan 15 - 1540

HF UNIT 14C  
**HF UNIT 55E**  
HF LUCY 220S  
LFE BA LEWIS 353B  
**LFE BA ROSE 2167E**  
LFE BA ROSE 2039Z

GE	BW
1	3.5
WW	YW
47	83
MCE	Milk
5	21

- We purchased HF Unit from Hamilton's in the spring of 2018. Progeny are sound, flexible, mobile cattle with great feet
- The EPD profile doesn't suggest as much calving ease potential as compared to how this guy is put together



HF Unit 55E - Sire

**635****LFE BA LEWIS 3072G**

Pending LFE 3072G May 12 2019

Angus  
Black  
BW - 72  
ADJ WWT - 585  
Jan 15 - 1600

COLEMAN CHARLO 0256  
**COLEMAN BRAVO 6313**  
COLEMAN DONNA 714  
MOHNEN PULSE 533  
**LFE BA ERROLINE 2096E**  
LFE BA ERROLINE 2232C

GE	BW
13	3.6
WW	YW
37	94
MCE	Milk
3	18

- Big sided Bravo son
- Bravo progeny are moderate, proven to grow rapidly and calve with ease



COLEMAN Bravo 6313 - Sire

**636****LFE BA LEWIS 3018G**

2185304 LFE 3018G April 30 2019

Angus  
Black  
BW - 69  
ADJ WWT - 691  
Jan 15 - 1560

COLEMAN CHARLO 0256  
**COLEMAN BRAVO 6313**  
COLEMAN DONNA 714  
KR BULLSEYE 3451  
**LFE BA MATILDA 2097E**  
LFE BA MATILDA 2095Y

GE	BW
10.5	0.2
WW	YW
53	94
MCE	Milk
11.5	23

- Same as the rest, ultra low birth, and easy calving. The Bravo sons have exceptional foot quality, docility and vigour

**637****LFE BA LEWIS 3098G**

2185311 LFE 3098G May 15 2019

Angus  
Black  
BW - 80  
ADJ WWT - 735  
Jan 15 - 1650

HF SYNDICATE 213Z  
**HF CARTEL 128C**  
HF PRIDE 63Y  
LFE BA LEWIS 353B  
**LFE BA BLACKCAP 2156E**  
REMINGTON BLACKCAP 521W

GE	BW
5.5	2
WW	YW
44	81
MCE	Milk
8	23

*New Sire***LFE Imperial 340G****638****LFE BA LEWIS 3026G**

2185295 LFE 3026G May 05 2019

Angus  
Black  
BW - 80  
ADJ WWT - 747  
Jan 15 - 1590

COLEMAN CHARLO 0256  
**COLEMAN BRAVO 6313**  
COLEMAN DONNA 714  
S A V RENOWN 3439  
**LFE BA BLACKCAP 2007E**  
REMINGTON BLACKCAP 492U

GE	BW
6.5	0.7
WW	YW
55	97
MCE	Milk
8	19





**639 LFE BA LEWIS 3265G**  
 2185709 LFE 3265G June 21 2019

Angus Black  
 BW - 73  
 ADJ WWT - 759  
 Jan 15 - 1540

HF SYNDICATE 213Z  
**HF CARTEL 128C**  
 HF PRIDE 63Y  
 KR BULLSEYE 345I  
**LFE BA ERICA 2074E**  
 LFE BA ERICA 41B

CE	BW	WW	YW	MCE	Milk
4.5	2.3	56	97	8.5	30



LFE Erica 51T - Grand Dam

- Low birth, stylish Cartel son



**640 LFE BA LEWIS 3154G**  
 2184201 LFE 3154G May 23 2019

Angus Black  
 BW - 55  
 ADJ WWT - 755  
 Jan 15 - 1560

HF SYNDICATE 213Z  
**HF CARTEL 128C**  
 HF PRIDE 63Y  
 BROOKING BANK NOTE 4040  
**LFE BA JENNIFER 2024E**  
 LFE BA JENNIFER 66A

CE	BW	WW	YW	MCE	Milk
8.5	-1.1	50	85	10.5	23



LFE Jennifer 10C - Sister

- We purchased Cartel from Hamilton Farms along with Anchor Lazy U.
- The Cartel daughters are having their second calves. We are excited about the progeny Cartel left behind



*We want to thank Grant Bulloch for his seven-year commitment to this farm. Grant showed up for a couple day tour and ended up never leaving. We wish Grant all the success as he makes his way back to his Native Country of Australia.*





# Red Angus Extra Age Bulls

## Reference Sire



RED RAINBOW Sting 15D

700

## LFE RA LEWIS 3032G

2181105 LFE 3032G May 05 2019

Angus  
Red  
BW - 75  
ADJ WWT - 690  
Jan 15 - 1680

RED SIX MILE GAME FACE 164Y  
**RED RAINBOW STING 15D**  
RED STEWART LADY 2X  
RED LFE TURBULENCE 3082Y  
**RED LFE RA PRINCESS 2182D**  
RED LFE PRINCESS 134A

CE	BW	WW	YW	MCE	Milk
-7	4.7	36	64	1.5	19

- *Sting son built for heifers*
- *Grand Dam was purchased from Bar-E-L as a heifer calf*



BAR-E-L Princess 3X - Grand Dam



701

## LFE RA LEWIS 3036G

Unregistered LFE 3036G May 6, 2019

Angus  
Red  
BW - 70  
ADJ WWT - 730  
Jan 15 - 1690

RED SIX MILE GAME FACE 164Y  
**RED RAINBOW STING 15D**  
RED STEWART LADY 2X  
RED LFE TURBULENCE 3082Y  
**RED LFE RA GEORGINA 2026D**  
RED LFE FEORGINA 2027Z

CE	BW	WW	YW	MCE	Milk
-0.5	2.1	39	64	4.0	19

- *Dam is a second calver*
- *Maternal brother sold to Galas Stock Farms last spring*







**702**

**LFE RA LEWIS 3049**

2181853 LFE 3049G May 08 2019

Angus Red  
BW - 83  
ADJ WWT - 688  
Jan 15 - 1700

RED SIX MILE GAME FACE 164Y  
**RED RAINBOW STING 15D**  
RED STEWART LADY 2X  
RED LFE TURBULENCE 3082Y  
**RED LFE OWYHEE 2030C**  
RED YY OWYHEE 702T

CE 0 BW 3.7

WW 34 YW 59

MCE 5.5 Milk 18



LFE Lewis 3115F - Brother

- One of the best red angus bulls, soggy, stout and off the best momma cow
- Maternal brother was a high seller last spring to Dercam Farms



**703**

**LFE RA LEWIS 3401G**

2181819 LFE 3401G May 18 2019

Angus Red  
BW - 82  
ADJ WWT - 740  
Jan 15 - 1670

RED SIX MILE GAME FACE 164Y  
**RED RAINBOW STING 15D**  
RED STEWART LADY 2X  
RED U-2 DYNAMO 7021T  
**RED LFE RA LARKABA 2075Y**  
RED LFE LARKABA 42S

CE -1 BW 2.9

WW 28 YW 55

MCE 3 Milk 19



DARLOCK Larkaba 7M - Grand Dam

- Larkaba cows are the best, Grand Dam LFE 42S and great Grand Dam LFE 7M are the two best red cows we ever raised
- Maternal brothers at work for Dale Rizzoli and Darwin Berg



**704**

**LFE RA LEWIS 3057G**

2181108 LFE 3057G May 09 2019

Angus Red  
BW - 70  
ADJ WWT - 709  
Jan 15 - 1570

RED SIX MILE GAME FACE 164Y  
**RED RAINBOW STING 15D**  
RED STEWART LADY 2X  
RED LFE PRIDE ROCK 3013X  
**RED LFE LARKABA 2129A**  
RED LFE LARKABA 42S

CE -2.5 BW 1.3

WW 25 YW 49

MCE 2.5 Milk 19



LFE Larkaba 42S - Grand Dam

- Dam is a Larkaba, maternal sister to the dam of Lot 703
- 3057G is stout, hairy and ready for a pen of heifers

RED ANGUS X-AGE

**705**

**LFE RA LEWIS 3043G**

2180580 LFE 3043G May 08 2019

Angus Red  
BW - 81  
ADJ WWT - 592  
JAN 15 - 1460

RED SSS ARSON 303W  
**RED T-K HOME TOWN 30C**  
RED T-K CHEROK 74R  
RED WHEEL MONOPOLY 85C  
**RED LFE RA LADY 2140E**  
RED LFE LADY 10W

CE 3 BW 3.2

WW 39 YW 66

MCE 4.5 Milk 22



The bulls were all pictured in late November, early December. We would like to thank Kolby Heaven and Dexter Widemen for their patience and expertise in the picture pen.



**706****LFE RA LEWIS 3017G**

2181818 LFE 3017G May 30 2019

Angus  
Red  
BW - 82  
ADJ WWT - 913  
Jan 15 - 1870

RED SIX MILE GAME FACE 164Y  
**RED RAINBOW STING 15D**  
RED STEWART LADY 2X  
RED BROWN JYJ REDEMPTION Y1334  
**RED LFE RA WONDER 2046D**  
RED LFE WONDER 70B

CE	BW	WW	YW	MCE	Milk
-1	3.6	37	71	3	18

- The most complete Red Angus bull to sell
- Low birth, scale crushing performance data



BROWN JYJ Redemption Y1334 - Dam Sire

**707****LFE RA LEWIS 3045G**

2181107 LFE 3045G May 08 2019

Angus  
Red  
BW - 80  
ADJ WWT - 578  
Jan 15 - 1580

RED SIX MILE GAME FACE 164Y  
**RED RAINBOW STING 15D**  
RED STEWART LADY 2X  
RED LFE TURBULENCE 3082Y  
**RED LFE RA COUNTESS 2098D**  
RED LFE COUNTESS 2052X

CE	BW	WW	YW	MCE	Milk
-2	4.5	36	65	5	22

- Sting x Turbulence combo
- Sting was acquired from Rainbow Red Angus for his superb foot quality, consistent calving ability, and huge growth potential



LFE Turbulence 3082Y - Dam Sire

**708****LFE RA LEWIS 3073G**

2181109 LFE 3073G May 12 2019

Angus  
Red  
BW - 80  
ADJ WWT - 634  
Jan 15 - 1480

RED SIX MILE GAME FACE 164Y  
**RED RAINBOW STING 15D**  
RED STEWART LADY 2X  
RED LFE TURBULENCE 3082Y  
**RED LFE PINE MARIE 2024C**  
RED LFE PINE MARIE 618U

CE	BW	WW	YW	MCE	Milk
-2	3.5	30	54	3.5	20

- Another Sting x Turbulence combo
- Long made, angular front end, sound to the ground



DARLOCK Pine Marie 25K - Grand Dam







**709 LFE RA LEWIS 3013G**

2181122 LFE 3013G April 29 2019

Angus  
Red  
BW - 74  
ADJ WWT - 738  
Jan 15 - 1670

RED SIX MILE GAME FACE 164Y  
**RED RAINBOW STING 15D**  
RED STEWART LADY 2X  
RED LFE AYERS ROCK 416X  
**RED LFE PRINCESS 134A**  
RED BAR-E-L PRINCESS 3X

CE	BW	WW	YW	MCE	Milk
-7	5.2	42	73	0	19



BAR-E-L Princess 3X - Grand Dam

- Big time power bull, mass, and substance for days. This guy is as dark as they come
- Maternal brothers working at the good herds of Bleak Lake Farms, and Hiltz Land and Livestock



**710 LFE RA LEWIS 3027G**

Unregistered LFE 3027G May 5, 2019

Angus  
Red  
BW - 87  
ADJ WWT - 720  
Jan 15 - 1500

RED SIX MILE GAME FACE 164Y  
**RED RAINBOW STING 15D**  
RED STEWART LADY 2X  
RED LFE TURBULENCE 3082Y  
**RED LFE RA Duchess 2221D**  
RED LFE DUCHESS 2007Z

CE	BW	WW	YW	MCE	Milk
-1	2.9	36	59	2	20

- Sting x Turbulence combo
- Hairy, mobile bull that is athletic and flexible



**711 LFE RA LEWIS 3225G**

2181860 LFE 3225G June 06 2019

Angus  
Red  
BW - 77  
ADJ WWT - 759  
Jan 15 - 1650

RED SIX MILE GAME FACE 164Y  
**RED RAINBOW STING 15D**  
RED STEWART LADY 2X  
RED LFE TURBULENCE 3082Y  
**RED LFE LANA 2052C**  
RED LFE LANA 2125Z

CE	BW	WW	YW	MCE	Milk
-3	3.6	34	59	3.5	17



LFE Turbulence 3082Y - Dam Sire

- Real good birth to weaning spread
- Dark pigment, ready for heifers or second calvers
- Maternal brother sold to Dale Ray Stock Farm last spring



# Jack "Pops" Lewis

September 5, 1931 - May 16, 2020

We would like to dedicate this years catalogue to celebrate the life of Jack "Pops" Lewis the patriarch of all at Lewis Farms. No doubt everyone reading this will have some great memories of visiting with Jack at the bull sale over the years. He was always a fixture and enjoyed catching up on all things agriculture with everyone. He could find time for everyone and until the end was at the farm almost each and every day. Even at the age of 88, you would still be hard pressed not to see Jack at the farm on a daily basis, wearing some likely tattered clothes, that big signature grin of his, and always happy to chat. His passion for all things agriculture was undeniable. His love for friends and

family was unconditional.

Jack leaves a legacy that will be remembered forever. Always striving for excellence, and pushing us to be at our best whether it was on, or off the farm. Even though another 88 years would not have been enough time with him. We are extremely fortunate to have had such a prolific man as such a big part of our lives, for as long as we did. He has filled our hearts with the fondest of memories that will forever be cherished. There is no question we would not be where we are today without Jack, he was truly the heart and soul of this operation. In our eyes the greatest man to ever live. A husband, a father, a grandfather, a great grandfather, a brother, an uncle and a friend to so very many. From all of us, we love you "Pops" Jack. Forever.





[WWW.LEWISFARMS.CA](http://WWW.LEWISFARMS.CA)