



RM

MASTERPIECE

LVJ

*online*

2021  
RED AND BLACK ANGUS SALE

Sale opens Monday, December 13 10AM CST  
Racehorse close-out Tuesday, December 14 6PM CST

welcome from *First Class Cattle Marketing*

Welcome to the 2021 edition of the Masterpiece Angus Sale. The 2021 offering, although smaller in numbers than your average sale, is nothing short of fantastic. We have once again decided to host this sale on the online timed auction platform ran through Farmgate Timed Auctions by DLMS. The bidding info is all listed in your catalogue and the system is very straight forward and user friendly. The Masterpiece Sale has been renowned for years as one of the places to buy elite Angus genetics and this year is no exception. Hollinger Land and Cattle has also offered their place up for an open house. A good majority of the cattle will be onsite for your viewing so plan on joining us for some great cattle and great hospitality. Please call the consignors directly to see if their cattle will be onsite for the open house.

On offer are picks, live cattle, semen, embryos and flushes. The pick in the sale this year is as interesting and rare of an opportunity as you will find this year. Opportunities like this don't come along very often so please take advantage. The live cattle on offer this year are the right kind. These females will go out and work and will maximize the chances for a large return on investment. There is also a couple bull calves that have has intriguing of pedigrees as you will find. The frozen lots in the 2020 Masterpiece sale are some of the best semen, embryos and flushes as you will find in the Angus industry. Please bid and buy with the utmost of confidence, because the offering is truly great!

All of us at First Class Cattle Marketing will be very familiar with the offering and it would be our pleasure to assist you in a professional and confidential manner on your next purchase. I urge you to also call the individual consignors personally to discuss their offerings. Mark Shologan at Farm Gate Timed Auctions will also be available to answer any questions you may have. I wish you all the best in 2021 and hope you have a very Merry Christmas and a Happy New Year.

Sincerely,

*Darnell Fornwald*  
First Class Cattle Marketing



Darnell Fornwald  
(403) 795-8030



Shay Martindale  
(780) 812-4581



Jonathan Karsin  
(204) 870-0329

Kyle Boss  
(587) 432-6160

### FIRST CLASS CATTLE MARKETING

Box 1740, Crossfield, Alberta T0M 0S0 phone: 403.795.8030

firstclasscattlemarketing@gmail.com

www.firstclasscattlemarketing.com

### First Class Cattle Marketing

Darnell Fornwald 403-795-8030  
Shay Martindale 780-812-4581  
Jonathan Karsin 204-870-0329  
Kyle Boss 587-432-6160

### Sale Consultants

Ryan Hurlburt 306-292-9812  
Brent Carey 403-650-9028  
Bryan Mackenzie, Mackenzie Sale Management 403-627-8266  
Shane Castle, Castlerock Marketing 306-741-7485

### Terms and Conditions

Cattle will sell under the standard First Class Cattle Marketing Terms & Conditions, posted on the IBC.

### Online Bidding farmgatetimeductions.ca

DLMS, Mark Shologan 780.699.5082  
Information on Farm Gate Timed Auctions go to page 26.

### Join us for an Open House

Join us for the Masterpiece close out and some Christmas hospitality at Hollinger Land & Cattle, Neudorf, SK, we'd love to see you there!

Some of the Masterpiece offering will be on display and hospitality will begin at 5:30pm.

Directions to Hollinger's:

*From Neudorf:* 4 miles west on HWY 22. North 1 mile at the mile marker 12.

*From HWY 10:* on the west side of Duff turn and head south 10 miles.

Watch for signs.



Timed Auctions Made Easy

**Sale opens Monday, December 13 at 10AM CST**  
**Racehorse close-out begins Tuesday, December 14 at 6PM CST**





The Saskatchewan Angus Association along with First Class Cattle Marketing present

# MASTERPIECE

*online red and black angus sale*

## **Arntzen Angus**

*Lot 12*

Dean Arntzen & Merlin Arntzen  
Box 306, Sedgewick, AB T0B 4C0  
Merlin 780.385.0257 Dean 780.385.0567  
darntzen@hotmail.com

## **Blake's Red Angus**

*Lots 22 to 23 and 26*

Murray & Shane Blake  
Box 86, McCord, SK S0H 2T0  
306.478.2520 306.478.7088 306.301.9140  
shane.blake1989@gmail.com

## **Blue Ren Ranch**

*Lot 27*

Danny Magowan  
Box 254 Grandora, SK S0K 1V0

## **Brandl Cattle Co.**

*Lots 3 to 4 and 18 to 19*

Byron & Gwen Brandl and Family  
Box 128, Jarvie, AB T0G 1H0  
780.954.2599 780.349.1765  
brandl@mcsnet.ca

## **Brylor Ranch**

*Lots 2, 30, 31 and 32*

Bryan & Sherry Mackenzie  
Box 122, Pincher Creek, AB T0K 1W0  
403.627.8266  
brylor@platinum.ca

## **Eastondale Angus**

*Lots 6 and 20*

Dale, Shelly & Erika Easton  
Box 410, Wawota, SK S0G 5A0  
306.739.2805 Dale 306.577.7456  
Herdsmen Nolan Glover 306-575-6955  
eastondale.angus@sasktel.net

## **Good View Angus**

*Lots 13 & 14*

Kyle & Jocelyn Francis  
221234 Range Road 282  
Rocky View County, AB T1X 0J3  
Kyle 403.998.8550  
Jocelyn 403.901.9825

## **Hollinger Land & Cattle**

*Lot 37*

Chad & Breanne; Trevor & Mel  
Box 276, Neudorf, SK S0A 2T0  
Chad 306.331.0302  
hollingerlandandcattle@gmail.com

## **Justamere Farms**

*Lots 12 and 13*

Jon & Shelly Fox & Family  
Box 320, Lloydminster, SK S9V 0Y2  
Jon 780-808-6860  
Jon Fox V 306-821-4182  
justamere@sasktel.net

## **KC Stock Farm Ltd.**

*Lots 9 & 10*

Cole Dodgson  
Box 269, Elk Point, AB T0A 1A0  
780.305.8137  
kcangus@telusplanet.net

## **La Conquista Ranches**

*Lots 15 to 16 and 28 to 29*

Luis Burciaga and Ana Marroquin  
Okotoks, AB  
403.863.5802  
laconquistaranches@outlook.com

## **Lewis Farms**

*Lot 1*

The Lewis Family  
27115A TWP Road 524  
Spruce Grove, AB T7X 3M9  
780.962.5050  
Kyle 780.220.9188  
info@lewisfarms.ca

## **Meadow Creek Angus**

*Lots 2 and 30*

Kelsey & Will Little  
Box 1625 Claresholm, AB T0L 0T0  
403.625.0754 403.625.0915

## **Moose Creek Red Angus**

*Lots 24, 33 and 34*

Darren Ippolito  
Box 190, Kisbey, SK S0C 1L0  
306.577.8970  
moose.creek@sasktel.net

## **Running Steady Ranch**

*Lots 5, 25 and 35*

Dean & Tanya Robertson and Family  
Box 10346, Lloydminster, SK  
639.536.0857

## **Rivendale Cattle Company**

*Lot 21, 25*

Gord and Dawn Davey & Family  
Box 44A RR 7, Saskatoon, SK S7K 1N2  
306.931.2530  
jessicaadavey@gmail.com

## **Steen Angus**

*Lot 11*

Dan, Erin, Callie & Lane Steen  
Box 898, Dundurn, SK S0K 1K0  
306.229.4678  
erinsteen1@gmail.com

## **Triple H Cattle Co.**

*Lots 38 to 40*

Perry, Dawn & Cory Hart  
Box 531, Cupar, SK S0G 0Y0  
306.723.4832 306.726.7755  
triplehredangus@gmail.com

## **Triple L Angus**

*Lots 7 & 8*

Randy & Kim Tetzlaff and Family  
Box 157, Viscount, SK S0K 4M0  
306.231.6969  
tetz@sasktel.net

## **Wright's Red Angus**

*Lot 17*

Jim and Kathy Wright  
Melfort, SK  
306-921-3178  
j\_kwright@hotmail.com

2021  
CONSIGNORS





JZT 23A



LFE 608A



GR 123B



LFE 72B



LFE 2007B



LFE 10C



LFE 39C



LFE 642C



LFE 659C



LFE 2005C



JSTN 6169



653C



LFE 111Y



LFE 158Z



LFE 38D

**1** Pick of the entire *Winter Calving* Black Angus cows at Lewis Farms *consigned by* Lewis Farms

When I asked Lewis Farms to be part of the Masterpiece sale again they decided to offer something truly unique. Lewis Farms and Sales Management are very excited to offer the pick of the entire Lewis Farms Winter calving Black Angus females. This cow herd has raised many breed leading and high selling genetics in the past 20 years, most recently the \$60,000 LFE 807G sold to Sandy Hills Farms and the \$55,000 LFE 3040G sold to Rocking Heart Range, both in their 2021 bull sale. Mother's of many great herd sires such as these are available in this pick. This herd consists of about 135 mature cows and bred heifers. If the buyer so wishes this pick can be made after calving, this gives you the opportunity to see every female milking as well as guarantee yourself a live calf. Lewis Farms have been running purebred Angus cows for over two decades. Their aggressive approach to the breed in those 20 plus years has provided them with a growing market and an exceptional set of cows for your appraisal. Embryo transfer and AI has been utilized very extensively and has allowed them to source the very best Black Angus genetics across North America. Lewis Farms sell around 80 Black Angus bulls each spring from a base of 250 cows total in both their Winter and Summer calving cow herd. The Lewis Farms Annual Bull Sale will be held this Spring on February 26, 2022. They will have roughly 300 bulls on offer between the Angus and Simmental breeds. Pick to be made by March 1, 2022.

**Lewis Farms**

For further information contact: Kyle Lewis at 780 220 9188 Ken Lewis at 780 818 3829





**2 Flush Opportunity: Kenray Merit *Freyja* 36H** *consigned by Meadow Creek Angus and Mark Mackenzie (Brylor Sr)*

FEMALE | KER 36H | 2181008 | FEBRUARY 08, 2020

BW	ADJ WW	EPDS	CE	BW	WW	YW	MCE	MILK
88 lbs.	641 lbs.	6.5	7.0	0.5	46	75	6.5	25

BAR S RANGE BOSS 1118  
*sire* **BAR S RANGE BOSS 4002**  
 BAR S PRIDE 0073

B C LOOKOUT 7024  
 BAR S PRIDE 7808  
 PLAINVIEW LUTTON E102  
 BAR S PRIDE 8594

*dam* **RED SOO LINE POWER EYE 161X**  
**RED CINDER FREYJA 29E**  
 RED ROYAL FREYJA 29M

RED COCKBURN RIBEYE 308U  
 RED TR LYNN 301R  
 RED PIE LO CANYON 912  
 RED ROYAL TOGNO FREYJA 156B

The decision was made 15 minutes after the conclusion of Red Round Up 2021 to offer a future flush on this wildly popular and subject of all sorts of conversations! Due to the large volume of requests to privately purchase some of her genetics we have decided to be consistent with the same course events that made Freyja 36H possible. In 2018, fresh off the dam's (Freyja 29E) Back-to-Back wins at FarmFair and Agribition, a flush was offered in Masterpiece – it topped that event at \$10,500 to the very interesting partnership of Kenray/Merit. The sire chosen was a black bull called Bar S Range Boss... good call boys! One of the resulting progeny was this female here today. She is fresh off becoming the high selling and record-breaking bred heifer off all time at \$40,000!! Talk about making history. Her full brother is now in major service at both Kenray and Fraser Farms (Boss 31H). The dam, 29E has had 3 flushes sold so far out of her at \$10,250 average. She has also produced two other daughters through Red Round Up (both as calves) at \$13,250 average. The sire has done an unreal job of siring unreal cattle for Merit including a \$50,000 son at Agribition to Double F.



Red Cinder Freyja 29E - Dam

Buyer has option to use any semen in the Meadow Creek or Brylor tanks. Who knows maybe this royally bred "Purple Angus" heifer will get flushed to a black bull.

Selling one future flush on Freyja 36H. Flush to be done at DRI. Guaranteed 6 viable/freezable/exportable embryos. Buyer and seller will split after 8. Buyer pays all flush costs. Terms: ½ down sale day balance due upon successful completion of flush.





Over the years we've always admired the quality offered in the Masterpiece sale and as a consignor we certainly want to hold up our end of the event. Sometimes you just have to let the really good ones go. Here's a special young female that lines up some great sires in her heritage. KR Cash Flow, Hyline Right Way 781, Freys Opportunity, and B/R New Frontier 095. Equally as stunning are the females lined up in her tablation. Her grand dam, BCC Miss Burgess 8U has been one of our signature females in recent years. Her most famous daughter being Miss Burgess 9B who captured many awards including Supreme Champion Female at the Farmfair Junior Futurity and placing in the top 10 in the Alberta Supreme. This is a special calf bred for maternal power, fertility and longevity. Juniors will want to put a halter on her – I know our kids sure wish she was staying here!

*consigned by Brandl Cattle Co.*

**3 BCC Miss Burgess 60J**

FEMALE | BCC 60J | 2209032 | FEBRUARY 01, 2021

BW	ACTWW	EPDS	CE	BW	WW	YW	MCE	MILK
79 lbs.	616 lbs.		1.0	2.7	57	99	8.0	23

KR CASH FLOW  
*sire* **BCC LOTTO MAX 31F**  
 BCC BLACK VELVET 7S

BARSTOW CASH  
 WK LASS 1591  
 HYLINE RIGHT WAY 781  
 BCC BLACK VELVET 47H

FREYS OPPORTUNITY 148A  
*dam* **BCC MISS BURGESS 38F**  
 BCC MISS BURGESS 8U

BSAR OPPORTUNITY 9114  
 F A R PRINCESS 214X  
 B/R NEW FRONTIER 095  
 BCC MISS BURGESS 45L



One of the most powerful females to ever leave Brandl Cattle Co. This is an incredibly thick, strong topped heifer that weaned with an index of 118. Sired by BCC Lotto Max 31F who is a KR Cash Flow son from an awesome Hyline Right Way 781 daughter. She is still in production at 16 years of age and is a CAA ELITE female with an index of 105. She is also our poster cow when it comes to volume and capacity. The bottom of his calf's pedigree boasts a very functional Fire It Up daughter that has a different twist to her pedigree going back to a UK bull out of the Nightingale herd. This heifer is unique in so many ways!

*consigned by Brandl Cattle Co.*

**4 BCC Lynn 9J**

FEMALE | BCC 9J | 2208569 | JANUARY 08, 2021

BW	ACTWW	EPDS	CE	BW	WW	YW	MCE	MILK
87 lbs.	702 lbs.		-5.0	4.1	66	104	2.0	23

KR CASH FLOW  
*sire* **BCC LOTTO MAX 31F**  
 BCC BLACK VELVET 7S

BARSTOW CASH  
 WK LASS 1591  
 HYLINE RIGHT WAY 781  
 BCC BLACK VELVET 47H

BCC FIRE IT UP 2B  
*dam* **BCC LYNN 60F**  
 BCC LYNN 36C

REMITALL F ODYSSEY 67X  
 BCC BLACK VELVET 6W  
 NIGHTINGALE PROUD JAKE G405  
 BCC ISABELLE 60X





This beautiful heifer calf prospect is sired by the AI sensation Ellingson Top Shelf, that certainly needs no introduction. Her Dam is a hard-working Hollinger female that we purchased from Chad, Trevor and family. She is halter broke and ready for the show ring, we had entered her in Lloyd but with the busy year could not get a string to town. If you are looking to add a breeding piece or to go to a few shows next year have a look at this beauty.

**5** RSR 5050 *Blackwood* 419J

*consigned by* Running Steady Ranch

FEMALE | DINO 419J | 2237569 | JANUARY 28, 2021

BW	ADJ WW	EPDS	CE	BW	WW	YW	MCE	MILK
76 lbs.	N/A		8.5	0.6	55	94	11.5	26

ELLINGSON PLATEAU 1155  
*sire* **ELLINGSON TOP SHELF 5050**  
 EA EMBLYNETTE 9203

LT TERRITORY 5824 OF EA  
 EA BLACKCLASS 6938  
 S A V FINAL ANSWER 0035  
 EA EMBLYNETTE 447

JUSTAMERE 422 IMPACT 244Y  
*dam* **HLC BLACKWOOD 831D**  
 HLC BLACKWOOD 47P

EXARPAF 422  
 JUSTAMERE L547 ROSEBUD 907T  
 DOUBLE D LUKENS 13L  
 ROSEBANK BLACKWOOD 40L



This is a very high quality heifer calf with an over the top good pedigree to go with her. Her dam is a very good 10 year old mom, who has a beautiful suspended udder to this day, with perfect teat size and spacing. Her great grand dam was a \$20,000 bred heifer Windy Willows and ourselves partnered on in the 2001 Angus Pride Sale. Ruby 122'21's sire was our pick of the Sandy Bar bull pen in their 2020 bull sale! if maternal genetics is important to you research this females pedigree bulls like Ambush 10Y, Leachman Right Time, Sitz Traveler 8180, VDAR New Trend 315 all close up to the front of this girls paperwork.

**6** Eastondale *Ruby* 122J

*consigned by* Eastondale Angus

FEMALE | VK 122J | 2232562 | FEBRUARY 25, 2021

BW	ADJ WW	EPDS	CE	BW	WW	YW	MCE	MILK
78 lbs.	N/A		6.0	0.1	49	88	7.0	26

SANDY BAR DUPLICATE 137C  
*sire* **SANDY BAR DUPLICATE 59G**  
 SANDY BAR ANNIE K 46B

SANDY BAR AMBUSH 10Y 9A  
 NORTHERN VIEW BARBARAMERE 22Z  
 SANDY BAR IDEAL 19S 185W  
 SANDY BAR ANNIE K 57Z

EASTONDALE BREAK AWAY 32'07  
*dam* **EASTONDALE RUBY 05'11**  
 WWED 8180 RUBY 80P

HYLINE RIGHT WAY 781  
 GDAR FOREVER LADY 9136  
 SITZ TRAVELER 8180  
 FCR RUBY 25K





Blackbird is a powerhouse heifer out of our Forsyth herd bull. A huge topped performance heifer that has bull maker written all over her. An added bonus is her dam is a Bomber daughter. These daughters have been exceptional, with two ending up at Gold Bar. One of them being a recent feature and high seller at the Blairs Opportunity Knocks sale. This cow and now the calf follow the same Bomber trend.

**7** Triple L *Blackbird* 8J

*consigned by Triple L Angus*

FEMALE | RKT 8J | 2238938 | JANUARY 22, 2021

BW	ADJWW	EPDS	CE	BW	WW	YW	MCE	MILK
81 lbs.	N/A		4.0	1.5	53	90	6.5	23

BAR DOUBLE M THUNDER 14C  
*sire* **FRL THUNDER 5F**  
 BANDURA QUEEN 68Y

BAR DOUBLE M THUNDER 67A  
 BAR DOUBLE M ANNABELLA 38Z  
 LLB LUTHER 201P  
 EARLY SUNSET QUEEN 27T

JS BOMBER 1Y  
*dam* **TRIPLE L BLACKBIRD 1B**  
 TRIPLE L BLACKBIRD 30X

HF TIGER 5T  
 JS MANHATTAN GAL 848  
 EASTONDALE ALL THE WAY 11'08  
 TRIPLE L BLACKBIRD 48T



An embryo daughter out of a Power Eye. A bull that needs no introduction and the JCC Roxie cow that has written her own story. Typical hairy, big boned, eye appealing Power Eye daughter out of a very proven dam.

**8** Red Triple L *Roxie* 205J

*consigned by Triple L Angus*

FEMALE | RKT 205J | 2234369 | JANUARY 29, 2021

BW	ADJWW	EPDS	CE	BW	WW	YW	MCE	MILK
-	-		2.0	1.8	35	62	5.0	20

RED COCKBURN RIBEYE 308U  
*sire* **RED SOO LINE POWER EYE 161X**  
 RED TR LYNN 301R

RED BAR-E-L RIBEYE 103R  
 RED WILBAR CORA 443P  
 RED GEIS KNIGHT HAWK 14'02  
 TR LYNN 105L

RED TER-RON MAMBO 28K  
*dam* **RED JCC ROXIE 20S**  
 RED JCC ROXIE 73M

RED YY RED KNIGHT 640F  
 RED ALDER ABG STAR DUST 8G  
 RED SSS BOMBER 907G  
 RED JCC ROXIE 5H





A picture says a thousand words right? Well, I can only say that you have to take a look at her in person from another angle, and you'll have billions. She's one that speaks for herself. She has the competitive look to compete in the show ring for many years, then has the longevity to last in your cow herd for many more. Lidela is one I shouldn't be selling with how exceptional she is in every way. No matter how you look at her, she's just that good. She is extremely soft made, bold ribbed and has all the boxes checked off to make you money! She's out of an extremely productive three year old cow that is built right from the ground up. From perfect feet and udder structure, to her body dimension and muscle expression. Lidela 5J will be the perfect heifer prospect in both the show world or in real cow world!! Take her home. You won't be disappointed.

KC would like to retain a future flush.

*consigned by KC Stock Farm*

**9** Red KC *Lidela* 5J

FEMALE | CGD 5J | 2197662 | JANUARY 09, 2021

BW	ACTWW	EPDS	CE	BW	WW	YW	MCE	MILK
70 lbs.	696 lbs.	6.0	7.0	0.3	34	60	7.0	22

RED TR LITTLE DEEP 285B  
*sire* **RED RSL LITTLE DEEP 958F**  
 RED RSL ROSELLA 450X

RED BIEBER ROLLIN DEEP Y118  
 RED TR MISS PATHY 1170Y  
 RED SIX MILE CHEROKEE 350T  
 RED RSL ROSELLA 851T

J HEART SURE SHOT 526C  
*dam* **RED J HEART LIDELA 866F**  
 RED J HEART LIDELA 569C

KG SURE SHOT 1061  
 RED J HEART MISS ERICA 327A  
 RED NORDAL CARDPLAYER 42Y  
 RED J HEART LIDELA 268Z



Here's a heifer calf out of a proven Elite Herd Sire with over 430 progeny to back him up, and Kitty 4J is no exception. An absolutely gorgeous female who is as long bodied as you can get them, wide topped and has a super attractive front end. She combines so much quality with her maternal look and structural integrity that Gladiator was known for. She is out of an extremely productive two year old that has impressive foot structure along with udder quality. She has longevity in every category and would be the perfect genetic piece to any operation!!



Red Dwajo Gladiator 32L  
Sire of 4J



Red Soo Line Gypsy 7293  
Paternal Sister

**10** Red KC *Kitty* 4J

FEMALE | CGD 4J | 2197655 | JANUARY 09, 2021

BW	ACTWW	EPDS	CE	BW	WW	YW	MCE	MILK
72 lbs.	652 lbs.	6.0	7.0	-1.0	30	55	8.0	27

*consigned by KC Stock Farm*

RED BLUE SPRUCE ZOOK 50H  
*sire* **RED DWAJO GLADIATOR 32L**  
 RED DWAJO SUPERIOR 4H

RED GLACIER MARIAS 548  
 RED BLUE SPRUCE SIENA 26A  
 RED GEIS PRIME RIB 411  
 RED BRETON SUPERIOR 39F

RED J HEART ROBBER 616D  
*dam* **RED J HEART KITTY 955G**  
 RED J HEART KITTY 732E

RED NINE MILE MILEAGE ROBBER  
 RED VIKSE 65L POUNDMAKER 176Y  
 RED J HEART CRIMSON JEWEL 422B  
 RED LAURON KITTY 32Y





Pride 194J is a high performance broody female that is incredibly deep bodied and stout made. She is fluid in her movement and has depth of heel. Her sire Duff Red Blood 18114 is an exciting, highly sought-after young outcross sire. Pride 194J is out of a Dwajo cow that was purchased at Red Round-Up. This cow family is very docile, every calf that her dam Pride 94E has produced has been very quiet. This calf is no different and would make a great junior project and will make a brood cow that will produce down the road.

**11** Red CL Steen *Pride* 194J

*consigned by* Steen Angus

FEMALE | CMS 194J | 2236861 | FEBRUARY 02, 2021

BW	ACTWW	PROJ EPDS	CE	BW	WW	YW	MCE	MILK
85 lbs.	750 lbs		7.5	-0.4	46	75	6.5	23

RED ROJAS RIOJA 6052  
*sire* **RED DUFF RED BLOOD 18114**  
 DUFF JUANADA 927K 15124

RED PZC TMAS FIRESTORM 1800 ET  
 RED SIX MILE LAKOTA 112Y  
 RED CROWFOOT OLE'S OSCAR 2042M  
 O C C JUANADA 927K

RED DWAJO SORCERER 3B  
*dam* **RED DWAJO PRIDE 94E**  
 RED DWAJO PRIDE 114Z

RED DWAJO GLADIATOR 32L  
 RED ACC BONNIE 2Z  
 RED TR MISTICAL 548W  
 RED DWAJO PRIDE 84W



A very prolific cow family in this heifer, her dam 112A gives me a heifer calf every year and one at the top end of quality, few other sisters retained in herd. Very soggy fancy made heifer calf out of our walking herd sire Flight Plan. Her maternal sister sold to Wraz out of masterpiece a couple years ago and when he dispersed his blacks last fall sold for very good money. Very neat show heifer prospect or top producing matron.



DTA Flight Plan 12F  
Sire of 35J



DTA Pride 30G  
Maternal Sister

**12** DTA *Pride* 35J

*consigned by* Arntzen Angus

FEMALE | DTA 35J | 2238782 | FEBRUARY 17, 2021

BW	ADJWW	PROJ EPDS	CE	BW	WW	YW	MCE	MILK
85 lbs.	N/A		3.2	2.2	47	73	8.5	24

MUSGRAVE SKY HIGH 1535  
*sire* **DTA FLIGHT PLAN 12F**  
 DTA GEORGINA 8B

MUSGRAVE BIG SKY  
 FLAG QUEEN W 00649  
 S A V BISMARCK 5682  
 WHITE BIRCH GEORGINA 1N

HF HEMI 176W 1  
*dam* **NRA PRIDE 112A**  
 CRESCENT CREEK PRIDE 7W

HF HEMI 151T  
 HF ECHO 7S  
 MINBURN MAIN EVENT 82R  
 CRESCENT CREEK HEROINE 15N





Blackbonnie 57J combines the depth and power from the Grand Sire OSU Bluechip 4230. Her frame is showcased when viewing her pins and width of back. This smooth walking heifer goes back to one of the matriarchs of our herd Goodview Blackbonnie 3D, which has produced progeny at the top end of our calves each year with excellent feet and a picture perfect udder. We have built a large portion of the herd around the Blackbonnie family, and this is the reason we are so happy to share 57J with other producers. Her pedigree and build are a rock solid foundation for producers to buy with confidence, and know that she will produce some of the best offspring to add to one's herd. 57J is set to become a powerful female that will allow for breeding for style and class in the show ring or power and performance each year in the bullpen.

### 13 Good View *Blackbonnie* 57J

consigned by Good View Angus

FEMALE | KJM 57J | 2218122 | MARCH 21, 2021

BW	ACT WW	SCS	CE	BW	WW	YW	MCE	MILK
102 lbs.	628 lbs.	EP	-8.0	6.9	56	93	2.0	17

OSU BLUE CHIP 4230  
*sire* **DIAMOND T 4230B-BLUECHIP 17106**  
 DIAMOND T ERALINE 1329 - 10789

EXAR BLUE CHIP 1877B  
 OSU JILT 0105  
 BLACK PRINCE 10789 SACARIAS  
 BLACK PRINCESS 8796 ERALINE

LILAC LANE SAVC FERRARI 22'12  
*dam* **GOOD VIEW BLACKBONNIE 9F**  
 GOOD VIEW BLACKBONNIE 3D

S A V CAMARO 9272  
 LILAC LANE HF ERICA 01'10  
 CROWFOOT ENCORE 3908A  
 GOOD VIEW BLACKBONNIE 3B



When we purchased Black Jestress' dam from LLB, we had already set her breeding for the following year, and couldn't be happier to see the results that Soo Line Locomotive 1403 has stamped in this heifer. Her length and hip are a direct influence of her sire, and was able to carry on the rib depth we were so attracted to from her dam. She carries the length well on a solid foundation of good bone structure and feet. Under a very heavy and smooth hair coat, a smooth front end and shoulders are very eye-catching when she is on the move. Black Jestress 51J is stacked on the top end with extremely influential bulls with desired and proven daughters that go back to the likes of HF Kodiak and SAV Final Answer. 51J's feminine lines front to back, and 78lbs birth weight are built for calving ease. The potential offspring out of this heifer is something we are excited to share to the Angus Community and are sure she will fit in anyone's herd.

### 14 Good View *Black Jestress* 51J

consigned by Good View Angus

FEMALE | KJM 51J | 2206143 | FEBRUARY 24, 2021

BW	ACT WW	SCS	CE	BW	WW	YW	MCE	MILK
78 lbs.	586 lbs.	EP	4.0	1.6	43	82	6.0	23

SOO LINE MOTIVE 9016  
*sire* **SOO LINE LOCOMOTIVE 1403**  
 SHADY BROOK EVERENTENSE 2039

HF KODIAK 5R  
 TLA BEAUTY 5R  
 S A V FINAL ANSWER 0035  
 SCR EVERELDA ENTENSE 748

REHORST EVENING TINGE DAKOTA  
*dam* **LLB BLACK JESTRESS 21F**  
 LLB BLACK JESTRESS 302C

MOHNEN SOUTH DAKOTA 402  
 JL EVENING TINGE 0425  
 THOMAS COMPLETE 2142  
 TMBR NETWORK'S JESTRESS





A complete outcross pedigree, sired by the \$400,000 Forth Worth Champion Conley Express 7211, his daughters need no introduction, they have lead sales in the USA and Canada. In our search for complementing traits, we decided to use him in two of our SAV Heifer calves. SAV Emblynette 9262 a daughter of LD Capitalist, has provided her width and length to this outstanding heifer. She has a coat to die for that will be enjoyed by anybody looking for a show prospect.

**15** La Conquista *Tulpian* 111

*consigned by* La Conquista Ranches

FEMALE | LCOR 111J | APPLIED FOR | MARCH 18, 2021

BW	ADJWW	PRODS	CE	BW	WW	YW	MCE	MILK
87 lbs.	N/A	EMB	-2.5	3.6	71	118	4.5	20

SMA WATCHOUT 482  
*sire* **CONLEY EXPRESS 7211**  
 DPL SANDY 3040

SILVEIRAS WATCHOUT 0514  
 2K BEAUTY 961  
 SILVEIRAS STYLE 9303  
 K N C CABIN CREEK SANDY 804

LD CAPITALIST 316  
*dam* **S A V EMBLYNETTE 9262**  
 S A V EMBLYNETTE 7124

CONNELLY CAPITALIST 028  
 LD DIXIE ERICA 2053  
 S A V PEDIGREE 4834  
 S A V EMBLYNETTE 3287



Our first offering in the Red Angus needed to be our best Red heifer, introducing La Conquista Rosa 109 ET. When we purchased these embryos, we were looking for the power that Soo Line has contributed to his offspring and also the looks, by producing high achievers in the show ring. Her Dam Red Poplar Grove Dalles13X, is a proven donor housed in the prestigious Poplar Grove Angus. Rosa 109 ET has been a favourite since the day she was born. Her height, length and presence in combination with her low BW will complement your breeding program.

**16** Red La Conquista *Rosa* 109 ET

*consigned by* La Conquista Ranches

FEMALE | LCOR 109J | APPLIED FOR | FEBRUARY 21, 2021

BW	ADJWW	PRODS	CE	BW	WW	YW	MCE	MILK
-	-	EMB	7.0	0.5	35	56	7.0	24

RED COCKBURN RIBEYE 308U  
*sire* **RED SOO LINE POWER EYE 161X**  
 RED TR LYNN 301R

RED BAR-E-L RIBEYE 103R  
 RED WILBAR CORA 443P  
 RED GEIS KNIGHT HAWK 14'02  
 TR LYNN 105L

RED VIKSE LED 187U  
*dam* **RED POPLAR GROVE DALLES 13X**  
 RED POPLAR GROVE DALLES 144U

RED WINDY HILL LED 423P  
 RED EGGEN ARAB MISS 29M  
 RED DMM ROB ROY 3S  
 RED POPLAR GROVE DALLES 80S





29J is one of my favourite heifer calves this year. She is long bodied, deep ribbed with a very strong top. I feel confident she will go on to be a top end productive female. In my opinion there are many great individuals in her pedigree.

**17** Red Wrights 27F *Bridget* 29J

FEMALE | RW 29J | 2235087 | MARCH 18, 2021

BW	ADJWW	PROD EPDS	CE	BW	WW	YW	MCE	MILK
N/A	N/A		-0.5	3.4	51	83	5.5	27

*consigned by* Wright's Red Angus

RED MRLA NEW ERA 87Y  
*sire* **RED WRIGHTS CUTTING EDGE 27F**  
 RED SIX MILE CHETA 702W

MRLA 53W  
 RED MRLA MISS 845S  
 RED SIX MILE SAKIC 832S  
 RED SIX MILE CHETA 716S

RED SIX MILE KILL SWITCH 135Z  
*dam* **RED WRIGHTS 135Z BRIDGET 27D**  
 RED HANDFORD BRIDGET 1006K

RED BENCHMARK BETTER BEEF  
 RED SIX MILE FLOWER 424U  
 RED HANDFORD TREK 947G  
 RED HANDFORD BRIDGET 612G

HEIFER CALVES

*join us online at*

JOIN US ON FARMGATETIMEDAUCIONS.CA OR CONTACT FIRST CLASS MARKETING FOR MORE INFORMATION





BCC Barn Burner 31G  
Service Sire

You can travel a lot of miles to find a heifer like this with as much stoutness and style in such a structurally sound package. The JDM Earnan females are so consistent and have such sweet dispositions. The dam of this heifer is a daughter of BCC Fire It Up 2B. The Fire It Up daughters have quickly become the most treasured young females at Brandl Cattle Co. This son of Remitall F Odyssey stamps a perfect udder on every one of his daughters. They are deep bodied, easy fleshing brood cows. The 11 year old maternal grand dam is a CAA ELITE Female with an index of 106. Mark this heifer as special in every way! She sells with an early mating to BCC Barn Burner 31G, a calving ease and performance son of MAF First Impression 4420.

Exposed to BCC Barn Burner 31G from March 27 to May 25, 2021. Observed bred April 18. Due January 25, 2022

**18** BCC *Lynn* 45H

consigned by Brandl Cattle Co.

FEMALE | BCK 45H | 2157953 | JANUARY 19, 2020

BW	ACTWW	ACTYW	EPDS	CE	BW	WW	YW	MCE	MILK
71 lbs.	566 lbs.	919 lbs.	3.0	1.5	47	80	7.0	26	

CONNEALY EARNAN 076E  
sire **JDM EARNAN 15'15**  
JDM BLOSSOM 10'04

CONNEALY CONSENSUS  
BRAZILA OF CONANGA 3991 839A  
JDM BARDOLENE 25'02  
JDM BLOSSOM 7'02

BCC FIRE IT UP 2B  
dam **BCC LYNN 87E**  
BCC ISABELLE 60X

REMITALL F ODYSSEY 67X  
BCC BLACK VELVET 6W  
BCC JOHNNIE WALKER 4U  
BCC LYNN 108S



A very sweet fronted powerful heifer that is destined to be a front pasture cow. Her sire is the superb breeding Connealy Earnan son that was purchased out of the Riverbend Dispersal in 2017. Brandl Cattle Co. has amassed a nice group of his daughters that all display the same femininity in a powerful, easy fleshing, strong footed, good uddered package.

The 32E dam is quickly becoming a favourite at Brandl Cattle Co. She produced a daughter that sold through the 2019 Masterpiece sale to Georgia Howe. 32E is a daughter of a stout and maternal Peakdot Bold daughter. Heather 6B raised the high selling Black bull in our 2019 bull sale at \$9500. A pedigree loaded with deep bodied, easy fleshing, good uddered maternal machines. She sells bred to the rising star at Brandl Cattle Co., BCC Barn Burner 31G, a son of the Miller Wilson and MJT herdsire MAF First Impression 4420.

Exposed to BCC Barn Burner 31G from March 27 to May 25, 2021. Observed bred March 29. Due January 5, 2022

**19** BCC *Heather* 55H

consigned by Brandl Cattle Co.

FEMALE | BCC 55H | 2155749 | JANUARY 24, 2020

BW	ACTWW	ACTYW	EPDS	CE	BW	WW	YW	MCE	MILK
78 lbs.	609 lbs.	948 lbs.	1.0	2.6	59	101	7.0	25	

CONNEALY EARNAN 076E  
sire **JDM EARNAN 15'15**  
JDM BLOSSOM 10'04

CONNEALY CONSENSUS  
BRAZILA OF CONANGA 3991 839A  
JDM BARDOLENE 25'02  
JDM BLOSSOM 7'02

BCC FIRE IT UP 2B  
dam **BCC HEATHER 32E**  
BCC HEATHER 6B

REMITALL F ODYSSEY 67X  
BCC BLACK VELVET 6W  
PEAK DOT BOLD 204U  
BCC HEATHER 77U





Lorenz Endurance 4F  
Service Sire

This is a very stout, highly efficient made female! We were fortunate to obtain and use some McCumber Tribute 702 semen and we have been extremely happy with the results. The male calves we sold in our spring bull sale were very well received and sold well to both the purebred breeder and commercial cattleman. They had light birth, moderate easy fleshing abilities and lots of masculinity and breed character. Our high selling bull was a Tribute son selling to Scott Stock Farms of Crossfield Alberta for \$26,000.

This female's cow family is highly recommended here and has been a corner stone family for a great number of years. We lost this females good young dam last fall in a water bowl mishap, but the grand dam is fresh off of raising a \$12,000 herd bull that sold in this springs bull sale as well to Autumn Dew Angus of Windthorst SK. The Great grand dam is 12 years old and will calve her 12 calf here this coming calving season. These Tribute daughters were very popular at the recent Poplar Meadows bred heifer sale don't miss the chance to own one there won't be many chances with limited semen used in Canada.

Bred AI to Lorenz Endurance 4F on May 6th. Preg checked safe to A.I.  
Exposed to Lorenz Endurance 4F from May 28 to June 28, 2021.

*consigned by Eastondale Angus*

## 20 Eastondale Countess 02'20

FEMALE | VK 2H | 2157636 | JANUARY 22, 2020

BW	ADJ WW	ADJ YW	EPDS	CE	BW	WW	YW	MCE	MILK
75 lbs.	629 lbs.	1070 lbs.		8.0	0.9	59	108	7.0	28

MC CUMBER TREMENDOUS 2008  
*sire* MC CUMBER TRIBUTE 702  
LASSIE 113 OF MC CUMBER

O C C TREMENDOUS 619T  
MISS WIX 2022 HC MC CUMBER  
O C C MISSING LINK 830M  
LASSIE 935 OF MC CUMBER

EF COMMANDO 1366  
*dam* EASTONDALE COUNTESS 06'18  
EASTONDALE COUNTESS 120'16

EF COMPLEMENT 8088  
RIVERBEND YOUNG LUCY W1470  
SANKEYS LARAMIE 114  
EASTONDALE COUNTESS 90'09



This is a female that tops our bred heifers for both femininity and functionality. Her sire, Wilbar Renown 469E has a great pedigree and has been a proven producer of bulls, and females. In our 1st Annual Bull and Female Sale this past year we had many Renown sons on offer that had great performance. Rivendale Annie K 39H is structurally sound, long, deep, wide, smooth shouldered, angular, and has great teet development. The Annie K cow line is one our favorites as they are moderate, docile mothers that continually produce calves with power and performance that top the pen. Through the extreme droughts these past few years, our females have worked in real world conditions. The Annie K females are appreciated as they are easy doing, with a lot of natural muscling and condition under low management. This is an honest female with proven genetics that will work and produce quality progeny.

Bred natural service to Ward's Alaskaman 47H. Preg checked safe to DRAW 47H, and due to calve March 11, 2022 onwards with a favorable calving date of March 20, 2022. Exposed to Ward's Alaskaman 47H from May 31 to August 17, 2021.

## 21 Rivendale Annie K 39H

FEMALE | RVL 39H | 2166122 | MARCH 26, 2020

BW	ADJ WW	ACT YW	EPDS	CE	BW	WW	YW	MCE	MILK
81	590	N/A		0.0	2.9	48	82	7.0	18

*consigned by Rivendale Cattle Co.*

S A V RENOWN 3439  
*sire* WILBAR RENOWN 469E  
ROSE OF PEAK DOT 643T

RITO 707 OF IDEAL 3407 7075  
S A V BLACKCAP MAY 4136  
S A V 004 PREDOMINANT 4438  
ROSE OF PEAK DOT 441N

RNRF ERIC 159A  
*dam* RNRF ANNIE K 601D  
RNRF ANNIE K 327A

ANGUS ACRES ERIC 78U  
DOUBLE AA ANNIE K 297'06  
RNRF OUTLAW 220Y  
DOUBLE AA ANNIE K 602'03





We all talk about longevity in our programs! Well, here she is! Her grandma Red KF Babe 62R was purchased out of the Kuntz dispersal in 2012. She came up open this fall at the young age of 16 years old. Check out the udder development on this female. This is a NO MISS COW FAMILY!  
 Pasture exposed to T & S Loaded 78H from March 28 to July 6, 2021.  
 Ultrasounded 90 days on July 26.

## 22 Red Blake's *Babe* 52H

*consigned by Blake's Red Angus*

FEMALE | HMG 52H | 2147210 | JANUARY 25, 2020

BW	ACTWW	ACTYW	EPDS	CE	BW	WW	YW	MCE	MILK
77	695	970		5.0	0.5	49	77	0.0	24

RED LAZY MC CC DETOUR 2W  
*sire* **RED WWF DETOUR 19C**  
 RED WWF WIZARD ANEXA 143A

RED RMJ REDMAN 1T  
 RED LAZY MC BESS 12S  
 RED FLYING K WIZARD 7W  
 RED WWF ANEXA 97X

RED HOWE FINEST TRADITION 20W  
*dam* **RED BLAKE'S BABE 197D**  
 RED K F BABE 62R

RED BAR-E-L RIBEYE 103R  
 RED WILBAR BIRDIE 526R  
 RED K F BARNEY 53M  
 RED KF BABE 8L



This heifer is extremely fancy. She's a hard one to pick apart, with a very unique pedigree. Sired by the popular Young Dale Hi Definition 185B. Even better the outstanding cow family she comes from "The Gravity's". Dam 43D, although Hyper extended a hock as a yearling, has become a stellar producer, including our top bull calf again this year. Grand Dam raised a Red Round-Up graduate and you all know the great grand dam at Wraz!  
 Pasture exposed to the T&S Loaded 78H from March 28 to July 6, 2021.  
 Ultrasounded 85-90 days on July 26.

## 23 Blake's Ms *Gravity* 102H RC

*consigned by Blake's Red Angus*

FEMALE | HMG 102H | 2147326 | FEBRUARY 08, 2020

BW	ACTWW	ACTYW	EPDS	CE	BW	WW	YW	MCE	MILK
80	650	970		2.0	3.0	60	108	4.5	23

PF HOOVER DAM 041  
*sire* **YOUNG DALE HI DEFINITION 185B**  
 BLACK HAMCO COUNTESS 417T

HOOVER DAM  
 P F QUEEN MOTHER 446  
 PRAIRIELANE IDEAL 1418-0051  
 BLACK HAMCO SIMPSON 330N

NORTHERN VIEW SMW GUSTOV 3Z  
*dam* **BLAKE'S MS GRAVITY 43D**  
 RED BLAKE'S MS GRAVITY 4Z

REMITALL H RACHIS 21R  
 ISLA BANK NEONIA 27S  
 RED HOWE FINEST TRADITION 20W  
 RED BLAKE'S MS GRAVITY 72X





We are excited to offer one of our best. Powerful, bold, broody and bred early to the exclusive Garrett bull that sold for \$13,500 in our 2020 sale. We negotiated a possession interest in him after the sale. There won't be many more of these good Authentic heifers leaving here so don't miss out. Exposed to Red Moose Creek Garrett 101G from May 6 to June 17, 2021. Ultrasound for mid February calving.

**24** Red Moose Creek *Lana* 158H

*consigned by* Moose Creek Red Angus

FEMALE | LUO 158H | 2192988 | MARCH 19, 2020

BW	ADJWW	ADJYW	SCS	CE	BW	WW	YW	MCE	MILK
N/A	N/A	N/A	8.5	-11.0	5.5	47	81	-1.5	17

RED U-2 AUTHENTIC 139A  
*sire* RED W SUNRISE AUTHENTIC 796E  
 RED BROWN CREEK MRS YOUNG 45A

RED MINBURN COPENHAGEN 3Y  
 RED U-2 STORMY 7202T  
 RED SSS ENDORSE 639X  
 RED BROX ROXIE 76W

RED THAT'LL DO UNBELIEVABLE 6U  
*dam* RED MOOSE CREEK LANA 16X  
 RED MOOSE CREEK LANA 41S

RED LAZY R C EL SENRO 405P  
 RED THAT'LL DO MISS 57N  
 RED SSS BOOM TOWN 260D  
 RED MOOSE CREEK LANA 120N



We at Running Steady are happy to be a part of this years Masterpiece sale. This year was challenging to say the least. However, we are excited about the future when things turn back around. This female is an ET we acquired from Hugh Ross, she is a proven genetic gem, hailing from the original Supreme Champion at CWA Prime Time's Eileen, what a powerful female she was. She is sired by the \$75 000.00 Cottage Creek Rush, that sold in Denver to a syndicate headed up by TC Ranch of Nebraska. This female is long deep and powerful made. We were fortunate to be able to retain a full sister to her, this is why we are giving the buying public this rare opportunity. We are trying to reduce numbers through the drought, but will spare no expense to build a superb cowherd of 60 topnotch Angus Females, this heifer is one of those kind. AI bred to Colburn Primo on March 28, 2021. Pasture Exposed to RSR Full Throttle 307H from April 10. Favorable to AI

**25** RSR *Pressy Eileen* 487H

*consigned by* Running Steady Ranch

FEMALE | DINO 487H | 2165752 | JANUARY 09, 2020

BW	ADJWW	ADJYW	SCS	CE	BW	WW	YW	MCE	MILK
75 lbs.	N/A	N/A	8.5	10.5	-0.3	30	56	6.5	24

B C LOOKOUT 7024  
*sire* COTTAGE CREEK "RUSH" 902W  
 COTTAGE CRK 911J TYRA 7005'07

O C C LEGEND 616L  
 GIBBET HILL MIGNONNE E37  
 HF JUSTICE 52L  
 PRIME TIME'S GRACE 911'99

C J PRESTIGE 25T  
*dam* CC AND BAN PRESSY EILEEN 89X  
 PTC BAMB 29J SALTIE EILEEN 21Z

H S A F BANDO 1961  
 C J BLACKBIRD 11P  
 BOYD NEW DAY 800S  
 PRIME TIME'S EILEEN 29'99





Our first daughter of Six Mile Element 10E to sell at public auction. They are an outstanding group of females and it ain't much wonder why, as the great U6 Alana 13X cow is Elements dam. The Trophy cow family has always been our performance family! Originating from Mike Howe's good hero via Masterpiece sale in 2008. 71T and her calf 60W (106G's great grand dam) were named Supreme Champion Female at Brandon AG Ex in 2009. Pasture exposed to Red Six Mile Barry 476F from April 22 to July 18, 2021. Ultrasounded 80 days on July 17.

**26** Red Blake's *Miss Trophy* 106G

*consigned by* Blake's Red Angus

FEMALE | HMG 106G | 2091603 | FEBRUARY 06, 2019

BW	ACTWW	ACTYW	SCS	CE	BW	WW	YW	MCE	MILK
80	625	1000	5.0	-9.0	5.3	47	82	-5.0	21

RED SIX MILE SIGNATURE 295B  
*sire* RED SIX MILE ELEMENT 10E  
RED U6 ALANA 13X

RED SIX MILE GRAND SLAM 130Z  
RED SELMA OF SIX MILE 358X  
BLACK WHEEL ODYSSEY 117U  
RED U6 ALANA 65T

RED WILBAR COLOSSUS 830Z  
*dam* RED BLAKE'S MISS TROPHY 163E  
RED BLAKE'S MISS TROPHY 5Y

RED TER-RON RELOAD 703T  
RED SVR MISS TROPHY 82R  
RED HOWE FINEST TRADITION 20W  
RED BLAKE'S MISS TROPHY 60W



A long bodied, smooth fronted daughter of the high selling Red Six Mile Barry 476F. You can check her great cow family in Dam's foot notes. Very productive family! Her great grand dam is out in this area as Eric Hillis snuck her out of our female production sale in 2018.

**26a** Red Blake's *Miss Trophy* 22J

*consigned by* Blake's Red Angus

FEMALE | HMG 22J | 2216345 | JANUARY 11, 2021

BW	AUG21 WW	SCS	CE	BW	WW	YW	MCE	MILK
72	585	5.0	-8.0	3.0	34	61	-4.0	25

RED HALL'S BARRY 040C  
*sire* RED SIX MILE BARRY 476F  
RED SIX MILE VIDALIA 368C

RED NORTHLINE ROB ROY 122K  
RED BLAIRS ELORA 40X  
RED U-2 RECKONING 149A  
RED BRYLOR VIDALIA 180S

RED SIX MILE ELEMENT 10E  
*dam* RED BLAKE'S MISS TROPHY 106G  
RED BLAKE'S MISS TROPHY 163E

RED SIX MILE SIGNATURE 295B  
RED U6 ALANA 13X  
RED WILBAR COLOSSUS 830Z  
RED BLAKE'S MISS TROPHY 5Y





*will sell together*  
**as a Cow/Calf pair**

Easy Fleshing soggy made heifer. Moves excellent and has a great temperament. Very quiet and easy keeping. Excellent mother with lots of milk and a nice udder.

Dams production record -  
 NR 8@103 YR 7@101 REA 4@105  
 RibFat 4@89

Awesome pair here with great breeding and endless potential. Out cross genetics. Donor prospect here.  
 Open ready to flush.

**27** Cherry Crk *Emma* G462 S

*consigned by* Blue Ren Ranch

FEMALE | G462 | AAA#19805505 | FEBRUARY 10, 2019

BW	ADJWW	ADJYW	SCS	CE	BW	WW	YW	MCE	MILK
77 lbs.	680 lbs.	1081 lbs.	5.5	6.0	1.8	57	89	7.0	16

CONNEALY BLACK GRANITE  
*sire* **PMH BLACK GRANITE C526**  
 PMH QUEEN 98

CONNEALY CONSENSUS 7229  
 EURA ELGA OF CONANGA 9109  
 CONNEALY REFLECTION  
 PMH QUEEN 748

WOODHILL MAINLINE  
*dam* **CHERRY CRK EMMA 7642 0244**  
 CHERRY CRK EMMA 7642S

CONNEALY DANNY BOY  
 WOODHILL BLACKBIRD 1288-138K  
 CHERRY CREEK CLASSIC 413  
 MS C C EMMA 8561-1590 S



FEMALE | AUGUST 23, 2021 | APPLIED FOR | BW: 61 LBS.

*consigned by* Blue Ren Ranch

G A R EARLY BIRD  
*sire* **G A R ASHLAND**  
 CHAIR ROCK AMBUSH 1018

G A R DAYLIGHT  
 G A R PROGRESS 830  
 B/R AMBUSH 28  
 G A R YIELD GRADE N366

COW/CALF PAIR





When we started dreaming about our program, we studied and visited many purebred and commercial breeders around the world. Ani and I being Veterinarians, and passionate about animal genetics we knew our foundations lines needed to be among the best in the world. We are thrilled to offer in the Masterpiece Sale '21, the choice of two Angus Bull Calves that represent the foundation of where we want to take our program. Can't go wrong with either one!

We bought the dam of AGAVE looking for the maternal power of one of the world renowned Angus Programs, and knew she was carrying a bull calf from Coleman Playmaker 427, this combination should bring maternal profiles difficult to match combined with high growth with high Docility. Agave didn't disappoint, he is one of the most docile calves and heifers in our 2020 crop, and at his young age he already has the looks of a herd-sire. If you are looking for a heifer bull, think about La Conquista Agave.

**28** La Conquista *Agave* 101J

consigned by La Conquista Ranches

MALE | LCOR 101J | APPLIED FOR | JANUARY 28, 2021

BW	ADJWW	PRODS	CE	BW	WW	YW	MCE	MILK
90 lbs.	N/A	EPDS	4.0	1.0	68	116	5.5	25

GDAR GAME DAY 449  
*sire* **COLEMAN PLAYMAKER 427**  
 COLEMAN DONNA 714

BOYD NEW DAY 8005  
 G D A R MISS WIX 474  
 CONNEALY ONWARD  
 COLEMAN DONNA 386

LD CAPITALIST 316  
*dam* **S A V EMBLYNETTE 9262**  
 S A V EMBLYNETTE 7124

CONNEALY CAPITALIST 028  
 LD DIXIE ERICA 2053  
 S A V PEDIGREE 4834  
 S A V EMBLYNETTE 3287



*Selling Choice*  
**LCOR 101J & LCOR 102J**

SAV Rainfall 6846 is a sire that needs no introduction. OSU Jilt 9116 is a daughter of Jindra Acclaim who was one of the members of the Pen of 3 National Champions at the 2020 NWSS in Denver. This bull calf has the look and the power to contribute calving ease and growth potential combined with the looks of a Denver National Champion. A really standout herdsire prospect!

**29** La Conquista *Mezquite* 102J

consigned by La Conquista Ranches

MALE | LCOR 102J | APPLIED FOR | JANUARY 31, 2021

BW	ACTWW	EPDS	CE	BW	WW	YW	MCE	MILK
90 lbs.	N/A	EPDS	-	-	-	-	-	-

COLEMAN CHARLO 0256  
*sire* **S A V RAINFALL 6846**  
 S A V BLACKCAP MAY 4136

O C C PAXTON 730P  
 BOHI ABIGALE 6014  
 S A V 8180 TRAVELER 004  
 S A V MAY 2397

JINDRA ACCLAIM  
*dam* **OSU JILT 9116**  
 OSU JILT 6110

JINDRA 3RD DIMENSION  
 JINDRA BLACKBIRD LASSY 1111  
 BARSTOW CASH  
 OSU JILT 1172





**30 Semen Opportunity: Red BCC Brylor OTM *Resolution* 4H**

*consigned by* Rack Red Angus, JNL Ranches,  
Meadow Creek Angus, Brandl Cattle Co.,  
On The Mark and Brylor Ranch

MALE | BCCW 4H | 2170170 | JANUARY 01, 2020

BW	ADJWW	EPDS	CE	BW	WW	YW	MCE	MILK
82 lbs.	910 lbs.	EPDS	-2.0	3.0	66	97	1.0	34

BCC BOLD 16B  
*sire* **RED BCC GATOR 18E**  
BCC BLACK MARTA 39C

PEAK DOT BOLD 204U  
BCC BLACK VELVET 7T  
RED BCC STEEL FORCE 13Z  
BCC BLACK MARTA 77Z

RED TER-RON HOT SHOT 10B  
*dam* **RED BCC RENEE 44F**  
RED BCC RENEE 60T

RED LAZY MC KINGMAN 16W  
RED K ADAMS ZARIA 091Z  
RED BRYLOR NEW TREND 22D  
RED THAT'LL DO RENEE 683H

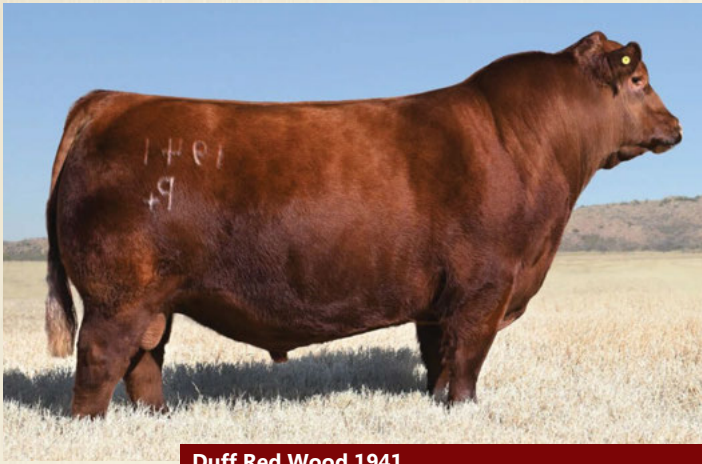
Every spring there is always a mad rush by the breeders in this country, pouring over bull sale catalogs to find the next great one! And every spring there is always a handful of them that everyone dreams of changing ownership on. Resolution was one of those top choices based on the amount of interest he generated when the Brandl catalog came out. He possesses a striking herd bull presence and has that up-headed proud look of a future Red Angus rock star. Some of his best attributes are a gorgeous deep, dark blood red color. He also has a very gentle nature to him, fantastic foot structure, and he possessed an amazing thick luxurious hair coat. For a low birthweight bull the muscle expression and amazing 205 and 365 day weights blew people away. Calving ease will come naturally for him as his outcross sire Gator is a deluxe heifer bull. See this bull in stud this fall at our \$100,000 Futurity sponsor AltaGenetics. Dam to 4H (Renee 44F) just produced a \$15,000 heifer in 49th Red Round Up to Halsey's in Oregon. Her first 6 embryos to sell have averaged \$1,100 as well. Renee and her calf were just named Mature Cow/Calf Champion at FarmFair 2021.



Red BCC Renee 44F - Dam

We are limiting the sales on this young sire to 100 straws this fall in Canada for the up-coming 2022 breeding season. 50 doses sell tonight but if the first buyer sweeps the ring, he will receive an additional 10 doses at no charge.  
A: 10 units B: 10 units C: 10 units D: 10 units E: 10 units





**Duff Red Wood 1941**



**Red Brylor 408C Essence 613F**

**31** *selling* **Three (3) Embryos**

DUFF RED WOOD 1941 X RED BRYLOR 408C ESSENCE 613F

*consigned by* MAVV Farms, On The Mark and Brylor Ranches

CE	BW	WW	YW	MCE	MILK	proj epds
1.8	58	99	23	7.5	8.0	

DUFF CORNERSTONE 16136  
*sire* **DUFF RED WOOD 1941**  
 DUFF DIXIE ERICA 144 1532

RED BLAIRS BINGO 581B  
 DUFF JUANADA 927K 246  
 WCR HAMMELECH 812Z  
 DUFF BL 505 DIXIEERICA 144

RED 9 MILE FRANCHISE 6305  
*dam* **RED BRYLOR 408C ESSENCE 613F**  
 RED BRYLOR 230U ESSENCE 408C

SPUR FRANCHISE OF GARTON  
 RED C-BAR ABIGRACE Y11  
 RED FINE LINE MULBERRY 26P  
 RED BRYLOR ESSENCE 230U

Essence 613F is one of those very special and extraordinary females that certainly don't come around very often. She topped the 2020 Brylor TWAV Sale as lot 1 for \$30 000 to MAVV Farms (1/2 embryo interest). Her dam 408C is also currently in ET work in Canada, as was her dam 230U and Granddam 42G. Essence 42G was a many time champion female in Canada – including the Supreme Champion Female over ALL breeds at Canada's most prestigious show called Agribition. This family of Red Angus females is known all over this planet. This is one of the most intriguing mating's we have ever created. Both Essence 613F and Redwood have a look to them to score a touchdown on every try. Imagine the awards this mating can garner for your program moving forward. Get on this one now no matter what!

**Selling three (3) embryos, guaranteeing one pregnancy if implanted by a certified technician. Located at Bow Valley. Buyer to pay all shipping costs. Stored at DRI**



**Red McRae's Reba 49W**



**Red Brylor OTHC Reba 49D**

**32a** **Four (4) #1 Embryos: Choice Lot**

RED FINE LINE MULBERRY 26P X RED MCRAE'S REBA 49W

RED COMPASS MULBERRY 449M  
*sire* **RED FINE LINE MULBERRY 26P**  
 RED DUS FAYETTE 8G

RED 5L GUNFIRE 1173-6966  
*dam* **RED MCRAE'S REBA 49W**  
 RED MCRAE'S REBA 66P

RED HR RAMBO ET 91K  
 RED BRYLOR MISS ROC 20H  
 RED SILVEIRAS REDFORD  
 RED MC DOUGALL FAYETTE 59A  
 5L GUNS BLAZIN 637-5874  
 RED 5L SILKWOOD 9161-1173  
 RED FLYING K PRINCE 171M  
 RED MCRAE'S REBA 25J

CE	BW	WW	YW	MCE	MILK	proj mating epds
1.8	58	99	23	7.5	8.0	

**32b** *consigned by* Brylor Ranch and On The Mark Cattle Co.

RED FINE LINE MULBERRY 26P X RED BRYLOR OTHC REBA 49D

RED COMPASS MULBERRY 449M  
*sire* **RED FINE LINE MULBERRY 26P**  
 RED DUS FAYETTE 8G

RED HXC HOT SHOT 4424B  
*dam* **RED BRYLOR OTHC REBA 49D**  
 RED MCRAE'S REBA 49W

RED HR RAMBO ET 91K  
 RED BRYLOR MISS ROC 20H  
 RED SILVEIRAS REDFORD  
 RED MC DOUGALL FAYETTE 59A  
 RED HXC BLUE MOON 1101Y  
 RED HXC JAYLO 4424B  
 RED 5L GUNFIRE 1173-6966  
 RED MCRAE'S REBA 66P

CE	BW	WW	YW	MCE	MILK	proj mating epds
1.8	58	99	23	7.5	8.0	

Not many times can you locate the opportunity to set your hands on a one two punch of a mother daughter combo like this. Both 49W and 49D have been awesome producers. Not even sure exactly how many dollars have been generated from old 49W... but it's a big number! We have nearly 20 pregnancies coming from both these cows in 2022. 49W sold in Red Round Up 2020 for a 1/2 share to VFF at \$12,000. 49D produced the \$27,000 Franchise 149F bull at Wrax and Red Ember. Embryos sired by the Breed Historian named Mulberry.

**Selling one package of four (4) #1 embryos, guaranteeing two pregnancy if implanted by a certified technician. FOB DRI. Buyer to pay all shipping costs. Stored at DRI**





Red Moose Creek Reba 24C



Red Moose Creek Lana 251C

### 33 Five (5) Embryos

RED MOOSE CREEK REBA 24C

RED LAZY MC HUSTLE 18T  
*sire* **RED HOWE DESIGNER 63X**  
 HOWE MS BIRDIE 91T

RED MOOSE CREEK OLYMPIAN 64P  
*dam* **RED MOOSE CREEK REBA 25T**  
 RED MOOSE CREEK REBA 17C

LAZY MC BOOM 44R  
 RED LAZY MC LARKABA 70R  
 WILBAR ADVANTAGE 580R  
 RED WILBAR BIRDIE 526R  
 RED BAR-E-L APPROVAL 4L  
 RED MOOSE CREEK LANA 21F  
 RED LEACHMAN ROBOBULL 810I  
 RED MOOSE CREEK 3U

CE	BW	WW	YW	MCE	MILK
0.0	1.9	33	66	5.0	26

Guaranteeing two pregnancy if implanted by a certified technician.

#### Choice of Matings

**A** *sire mating number one* **RED WRIGHTS COMBINATION 34G** (2125472)  
 pedigree: **RED SSS SOLDIER 365W X RED LAZY MC FIREFLY 36Z**

CE	BW	WW	YW	MCE	MILK
1.8	58	99	23	7.5	8.0

**B** *sire mating number two* **RED SSS GRANITE 74H** (2187543)  
 pedigree: **RED SSS GRIT 503F X RED SSS REBELLO 368Z**

CE	BW	WW	YW	MCE	MILK
-1.0	2.1	42	71	9.0	25

**C** *sire mating number three* **RED SIX MILE MOSSY OAK 175H** (2164370)  
 pedigree: **RED SIX MILE JOHN WICK 882E X RED SIX MILE MISS LARK 225E**

CE	BW	WW	YW	MCE	MILK
12.0	0.5	64	120	11.0	26

### 34 Five (5) Embryos

RED MOOSE CREEK LANA 251C

RED SVR GANGSTER 89U  
*sire* **RED SVR GANGSTER 44X**  
 RED SVR MISS LARK 221S

RED MOOSE CREEK ADMIRAL 9M  
*dam* **RED MOOSE CREEK LANA 12T**  
 RED MOOSE CREEK LANA 70R

RED SVR GANGSTER 14S  
 RED SVR MS CHIEF 55P  
 SVR TOURIST 82N  
 SVR MISS LARK 57N  
 RED JBV TERM II 5J  
 RED MOOSE CREEK BI-MARTHA 25B  
 RED T-K DUSTER 10K  
 RED MOOSE CREEK LANA 7J

CE	BW	WW	YW	MCE	MILK
-5.0	3.1	31	52	-1.0	26

Guaranteeing two pregnancy if implanted by a certified technician.

#### Choice of Matings

**A** *sire mating number one* **RED WRIGHTS COMBINATION 34G** (2125472)  
 pedigree: **RED SSS SOLDIER 365W X RED LAZY MC FIREFLY 36Z**

CE	BW	WW	YW	MCE	MILK
1.8	58	99	23	7.5	8.0

**B** *sire mating number two* **RED SSS GRANITE 74H** (2187543)  
 pedigree: **RED SSS GRIT 503F X RED SSS REBELLO 368Z**

CE	BW	WW	YW	MCE	MILK
-1.0	2.1	42	71	9.0	25

**C** *sire mating number three* **RED SIX MILE MOSSY OAK 175H** (2164370)  
 pedigree: **RED SIX MILE JOHN WICK 882E X RED SIX MILE MISS LARK 225E**

CE	BW	WW	YW	MCE	MILK
12.0	0.5	64	120	11.0	26



Red Wrights Combination 34G



Red SSS Granite 74H



Red Six Mile Mossy Oak 175H





**Greenwood High Class JJP 87H**



**Blair's Erica 681G**

**35** *selling* **Three (3) Embryos**

*consigned by* Running Steady Ranch

GREENWOOD HIGH CLASS JJP 87H X BLAIR'S ERICA 681G

CE	BW	WW	YW	MCE	MILK	proj epds
2.8	3.0	64	111	6.0	28	

SCHIEFELBEIN SHOWMAN 338  
*sire* **GREENWOOD HIGH CLASS JJP 87H**  
 HF TIBBIE 22C

SCHIEFELBEIN ATTRACTIVE 4565  
 FROSTY ELBA 3745  
 PLEASANT VALLEY LUTE 1207  
 HF TIBBIE 212X

S A V NATIONAL ANTHEM 5740  
*dam* **BLAIR'S ERICA 681G**  
 BAR-E-L ERICA 74A

S A V INTERNATIONAL 2020  
 A C DUKE GIRL 57  
 BAR-E-L NATURAL LAW 52Y  
 HF ERICA 339T

We are offering 3 embryos to a sale feature in Blairs opportunity, Blairs Erica 681G and Greenwood High Class the \$54 000.00 sensation sired by Schiefelbein Showman 338. The story has just been started on these incredible matings. Take a look... Blair's Erica 681G is a direct daughter of the prestigious 74A female. Selling three (3) embryos, guaranteeing one pregnancy if implanted by a certified technician. Buyer to pay all shipping costs.



**Ellingson Three Rivers 8062**



**Bar-E-L Erica 74A**

**36** *selling* **Three (3) Embryos**

*consigned by* First Class Cattle Co.

ELLINGSON THREE RIVERS 8062 X BAR-E-L ERICA 74A

CE	BW	WW	YW	MCE	MILK	proj epds
0.0	3.8	81	146	7.0	24	

ELLINGSON HOMESTEAD 6030  
*sire* **ELLINGSON THREE RIVERS 8062**  
 EA EMBLYNETTE 6279

CTS REMEDY 1T01  
 EA ERICA 1082  
 ELLINGSON CHAPS 4095  
 EA EMBLYNETTE 2159

BAR-E-L NATURAL LAW 52Y  
*dam* **BAR-E-L ERICA 74A**  
 HF ERICA 339T

S A V BISMARK 5682  
 BAR-E-L MAGNOLIA 143K  
 PEAK DOT FAME 2N  
 HF ERICA 46P

footnote

Selling three (3) embryos, guaranteeing one pregnancy if implanted by a certified technician. Buyer to pay all shipping costs.





Selling  
A: 5 units B: 5 units

**37** Semen Lot: **Silveiras S SIS** *GQ* **2353**  
 MALE | IMP 2353Z | 1890331 | APRIL 26, 2012

*consigned by* Hollinger Land & Cattle

CE	BW	WW	YW	MCE	MILK
3.0	3.0	49	80	4.0	16

GAMBLES HOT ROD  
*sire* **SILVEIRAS STYLE 9303**  
 SILVEIRAS ELBA 2520

FAMOUS 7001  
 CHAMPION HILL LADY 703  
 TWIN VALLEY PRECISION E161  
 D A R ELBA 55

B C LOOKOUT 7024  
*dam* **K N C CABIN CREEK SANDY 804**  
 K N C CABIN CREEK SANDY

O C C LEGEND 616L  
 GIBBET HILL MIGNONNE E37  
 ROTH REGULATOR 0405  
 CABIN CREEK SHER 3425



Selling  
A: 3 units

**38** Semen Lot: **Musgrave 316** *Stunner*  
 MALE | IMP 1676D | 1995252 | FEBRUARY 19, 2016

*consigned by* Triple H Cattle Co.

CE	BW	WW	YW	MCE	MILK
7.0	0.1	70	118	3.0	29

CONNELY CAPITALIST 028  
*sire* **LD CAPITALIST 316**  
 LD DIXIE ERICA 2053

S A V FINAL ANSWER 0035  
 PRIDES PITA OF CONANGA 8821  
 C A FUTURE DIRECTION 5321  
 LD DIXIE ERICA OAR 0853

MCATL PURE PRODUCT 903-55  
*dam* **MCATL BLACKBIRD 831-1378**  
 MCATL BLACKBIRD 1378-573

CONNELY FINAL PRODUCT  
 M A ESTA 55-252  
 CONNEALY REFLECTION  
 MA BLACKBIRD 573





Selling  
A: 3 units

**39** Semen Lot: **S A V** *Final Answer* **0035**  
 MALE | IMP 035K | 1061938 | FEBRUARY 22, 2000

*consigned by* Triple H Cattle Co.

CE	BW	WW	YW	MCE	MILK
13.0	-1.2	56	94	13.0	22

G D A R TRAVELER 71  
*sire* **SITZ TRAVELER 8180**  
 SITZ EVERELDA ENTENSE 1137

TRAVELER 1148 G D A R  
 G D A R MISS BLACKCAP 567  
 G D A R RAINMAKER 340  
 SITZ EVERELDA ENTENSE 2335

BON VIEW BANDO 598  
*dam* **S A V EMULOUS 8145**  
 S A V SKY EMULOUS 2124

TEHAMA BANDO 155  
 BON VIEW DORA 56  
 ELLANIN SKY DIVER  
 TAIL N 0383



Selling  
A: 3 units

**40** Semen Lot: **Red Six Mile** *Signature*  
 MALE | SIXM 295B | 1809453 | MARCH 12, 2014

*consigned by* Triple H Cattle Co.

CE	BW	WW	YW	MCE	MILK
-2.0	3.7	46	78	1.0	13

RED VGW GAME PLAN 816  
*sire* **RED SIX MILE GRAND SLAM 130Z**  
 RED SIX MILE REBECCA 216X

RED VGW GAME PLAN 508  
 RED VGW TW DOLL 0270  
 RED SSS BUCC 30U  
 RED WILBAR REBECCA 234M

RED SIX MILE UNLEASHED 595U  
*dam* **RED SELMA OF SIX MILE 358X**  
 RED RSL MISS SELMA 384F

RED TER-RON FULLY LOADED 540R  
 RED SIX MILE MINERVA 681R  
 RED VALLEYHILLS IMPACT 98D  
 RED RSL MISS SELMA 111C





**JOIN US ONLINE [www.farmgatetimeductions.ca](http://www.farmgatetimeductions.ca)**

**SALE OPENS** Monday, December 13 at 10AM CST

**RACEHORSE CLOSE-OUT** begins Tuesday, December 14 at 7PM CST

**MASTERPIECE**

## HOW TO PARTICIPATE IN THE DLMS FARM GATE TIMED AUCTION WITH EXTENDED BIDDING:

1. Visit [www.farmgatetimeductions.ca](http://www.farmgatetimeductions.ca), click the **LOGIN/REGISTRATION** button. First time users will select the **REGISTER** button from this page. Fill out the registration form to sign up for a free user account and it allows you to select a username and password for use on all Farm Gate Timed auctions. This program will send you text and email messages whenever there is activity on your favorite lots or someone challenges your proxy bid and this is why you will be asked for both your current email and cell phone number. If you are a past participant in the Farm Gate Timed auctions simply enter your user name and password to continue. This takes you to a list of both current and upcoming Farm Gate Auctions.

2. You can choose your favourite lots in this sale at this time and the program will allow you to open either all sale lots or just your favorite lots on your screen. Any time there is active bidding on a lot you have identified on your favorite list you will get a text and/or an email noting this activity.

3. The program allows you to place a proxy bid on any sale lot. This in fact protects your interest in any lot of interest for you to a specified dollar value you set, when you may not be able to give 100% attention to the sale. If the lot has a \$2000 bid on it and you place a proxy bid of \$3500 into the system, the computer will bid \$2100 for you but if some one else bids \$2200, the computer will again bid for you, this time at \$2300. The system will look after your interest to a maximum of \$3500. If another bidder is on at \$3600, your proxy will no longer be effective and you will no longer have the winning bid on this lot without once again logging in and bidding again or moving your attention to a second lot of interest.

4. At closing time of the sale the entire sale will extend bidding for 5 minute if a bid is placed on any lot in the sale. Any bid received after 6 PM will extend the sale by 5 minutes from the time of that bid. When no bidding occurs for 5 min the computer will declare the sale finished.

5. Within 24 hours of the sale close the Sale Manager, First Class Cattle Marketing will contact all winning bidders to arrange payment, transfer of pedigrees and delivery/Pick up of your lot.

If you require assistance with using the new DLMS Farm Gate web site, if you don't understand how to create a favorites list, if you can't figure out the proxy bid or you just plain want to bid via phone, please talk to any of the DLMS team or Sale Consignors.

**WHAT IS RACEHORSE STYLE SALE CLOSE?** Racehorse style sale close is when the entire sale stays open in extended bidding. This type of sale allows you as the bidder to change to a different lot within the same sale if the bidding has gone in to extended bidding.

**HOW WILL EXTENDED BIDDING WORK?** When we get to the close out end time the clock for close extends with any bid placed with less than 5 min on the clock. This type of extended bidding turns the end time to more of a soft time. Extended bidding allows bidders to compete in lots like a real auction and give all bidders the same time to make a decision. Always follow the clock to see how much time remains in the sale you are interested in.

**TERMS & CONDITIONS** The terms of the sale are cash or cheque payable at par at sale location unless satisfactory credit arrangements have been made prior to the sale. The right of property shall not pass until after settlement is made. First Class Cattle Marketing reserves the right to require a certified cheque as settlement before releasing any sale cattle. Should the purchaser fail to settle for his purchase, First Class Cattle Marketing reserves full power to resell the animal to the best advantage, either publicly or privately, without further notice. Any loss arising from such resale, together with keep and all other expenses shall be payable by the defaulter. All settlements must be made with the clerks of the sale before any cattle will be released. The owners, First Class Cattle Marketing and sale staff have the right to refuse bids from anyone who has a previous record of default in payment and/or who has not made prior credit arrangements prior to the sale with the owners and/or Sale Management.

**EXCHANGE** Foreign exchange rates will be announced at the beginning of the sale.

**BID** Every animal consigned to the sale must be sold by auction. No by-bidding will be permitted. Each animal will be sold to the highest bidder.

**DISPUTES** In cases of disputes, bidding will be reopened between the parties involved. If no further bid is made, the buyer will be the person from whom the auctioneer accepted the last bid. The auctioneer's decision in such matters will be final.

**PURCHASERS RISK** Each animal becomes the risk of the purchaser as soon as sold.

**ANNOUNCEMENTS** from the auction block will take precedence over printed matter in the catalogue. Buyers are therefore cautioned to pay attention to any such announcements.

**CERTIFICATE OF REGISTRY** The proper Registration of Recordation paper, as the case may be, will be duly transferred and furnished to the buyer for each animal after settlement has been made.

**SHIPPING** Assistance will be given in making shipment after the sale, but Sale Management or Seller assumes no risk. Expenses incurred are the responsibility of the purchaser. Purchasers are requested to furnish shipping instruction when making settlement.

**GUARANTEE** All animals will carry standard breeding guarantee as specified by the applicable Canadian breed Association. At no time shall the seller's liability exceed the purchased price of the animal.

**EXCEPTION TO GUARANTEE** In cases where the animal is subjected to any hormonal or surgical reproduction techniques after the sale, the guarantee shall be null and void. In the cases of bulls, they are guaranteed to breed naturally according to applicable Canadian breed Association guarantee, but no guarantee is given that semen from any bull will freeze.

**HEALTH** It is the buyer's responsibility to determine health requirements for importing any animal into his province or state. First Class Cattle Marketing assumes no responsibility for the health status of any animal in the sale.

**ACCIDENTS** Although every precaution will be taken to protect the safety and comfort of buyers, neither the Sale Management, auctioneer, or Association assumes any responsibility in this matter and disclaims any liability legal or otherwise in the event of accident or loss of property.

**RIGHTS AND OBLIGATIONS** The above terms and conditions of the sale shall constitute a contract between the buyer and the seller and be equally binding to both. Resale of animals following purchase in this sale shall constitute a separate transaction and the rights and the terms and conditions of this sale do not cover obligations of the two parties connected thereto.

**First Class Cattle Marketing IS AGENT ONLY** It is clearly understood that First Class Cattle Marketing acts only as agent between buyer and seller and is not in any way responsible for any failure by either party to live up to his or her obligations. First Class Cattle Marketing does not assume any financial obligations to collect or enforce collection of monies by either parties, and in exceptional case, any legal action will be between buyer and seller. First Class Cattle Marketing Ltd has no ownership of the facility and assumes no responsibility for the operation of said facility.





**First Class Cattle Marketing**  
Box 1740  
Crossfield, Alberta Canada  
T0M 0S0

