



MRL HERDBUILDER 20

FALL FEMALE PRODUCTION SALE

December 11, 2020

Online Auction

Bidding: December 10 - 11

Closing at 7 PM CST December 11

Genetics designed by Ranchers for Ranchers

On behalf of everyone here at MRL, we would like to welcome you to our Herdbuilders '20 fall female sale.

Well, 2020 has been quite a year. Yes, it's had its struggles, change and inconvenience but for us in the Ag business things just keep on keeping on and through all of this it is obvious that Agriculture is a critical, if not the most critical service and industry to our population here in North America. Everyone in Ag needs to feel proud of our contributions to the livelihood of our country and its people.

In lieu of the times we are living in, our sale format for 2020 will be a tick different than usual. What will be different is this year's offering will be offered in a timed auction format that with technology has proven to work very well. Most of us have become accustomed to this through other livestock sales and machinery sales over the past couple of years and for sure the past 6 months. (Even someone as computer illiterate and old school as myself with the help of my kids have got savvy at internet bidding). If you just flat out do not feel comfortable with this method, give us a call, we're here to help and for sure understand. Details for bidding are on the back inside cover of the catalogue and give us or Mark at DLMS a call to answer any question.

What hasn't changed for our Herdbuilders '20 sale is the offering. Almost 70 elite bred females with highly proven cow families and exclusive sires and service to the breed's most exciting genetics. The offering for 2020 may be the most diverse offering we have ever offered and visitors thus far proclaim maybe the most quality and depth throughout each division as ever offered before. The group of heifers on offer are out of the heifers we have selected and bred as our keeper group to go back into our breeding program here at MRL. They are sired by industry leading sires and mated to the most exciting calving ease bulls in the industry. The Red Simm heifers are powerful as a group and bred to exclusive sires like IPU Western, MRL Bender and MRL North Western (2 past high sellers out of big time dams here at MRL). We are very high on these young exclusive sires as well as the old master himself Red Force and high selling KWA Future bull at Ashworth's last spring. The black pen are bred to the highly proven big time numbered State of War sire we co-own with Semex. His greatest son MRL Bender as well as the exciting Proclamation and LFE Knighthawk sires. The R Plus Focus bull is the AI sire to many and exposure sire to all the red and black heifers on offer excluding his impressive daughters. He was the high selling bull in the 2019 R Plus sale, a total outcross calving ease and big-time maternal sire we are using heavily in our program. The service to this outstanding group of females will surely be a quick ROI. The Angus group are by far the most impressive group we have ever offered for sale in terms of sheer quality and genetics. Herdbuilding donor type females by MRLA Red Resource and Retrospects and all carrying service to the elite U2 Retrospect bull himself.

It's years like this we rely on our over 50 years in the business of providing elite seedstock to our customers with an honest old fashion approach. The quality of our offering for 2020 will be the same as it always has been! Over 50 years of stacking and multiplying elite cow families that rise to the top through production merit under our real-world ranch conditions. With 800 registered breeding females and limited manpower the cow families that work soon rise to the top. Over the years we have marketed thousands of breeding bulls and replacement females to literally hundreds of fellow breeders and commercial cattle operations. The majority have turned into many time repeat customers and more importantly, friends. The production of our offering is 100% hands on and our marketing strategy is based on an honest approach and cattle that are profitable for their new owners. This is what keeps the cowboys coming back year after year. We won't overwhelm you with fancy fitting, pictures, marketing schemes or pester you with phone calls. It's simple, elite genetics presented in their working clothes and an old fashion hand shake guarantee.

The heifers will be on display December 10th & 11th at the sale barn with lunch and refreshments for anyone that wants to be here at the ranch. Also, the heifers are available for viewing anytime from now until sale closeout at 7:00 pm, December 11th. We would encourage you to come have a look as pictures and videos just don't do justice to the quality of many of these females.

In closing I would like to thank our customers and all that have showed interest in our program in the past and would like to welcome you to be a part of our 2020 Herdbuilders event. As always, feel free to give us a call to discuss the offering or new bidding format for this year.

Working for and with you in the Livestock Industry.

The Entire MRL Crew



SALE DAY PHONES

LEE McMILLEN - 306.483.8067
DAVE McMILLEN - 306.483.8660
JIM McMILLEN - 306.483.7986
BRIAN BOUCHARD - 403.813.7999
DARNELL FORNWALD - 403.795.8030

MRL SALE BARN
306.928.2011
306.928.4820

SCOTT BOHRSON - 403.370.3010
TAYLOR RICHARDS - 306.821.4169
ROB VOICE - 306.361.6775
MATT CRIDDLE - 306.539.6934

MRL

Welcome to McMillen Ranching Ltd.

McMILLEN RANCHING LTD. | McMILLEN RANCHING LTD. | McMILLEN RANCHING LTD. | McMILLEN RANCHING LTD.

MRL

HERDBUILDER 20

FALL FEMALE PRODUCTION SALE

December 10 - 11, 2020
 Online Auction closes 7 PM Dec. 11

Sale Day Phones

MRL Sales Barn 306.928.2011
 Sales Barn 2nd Line 306.928.4820
 Lee McMillen 306.483.8067
 Jim McMillen 306.483.7986
 Dave McMillen 306.483.8660

Bohrson Marketing Services

Scott Bohrsen 403.370.3010
 Taylor Richards 306.821.4169
 Rob Voice 306.270.6082
 Matt Criddle 306.539.6934

Bouchard Livestock International

Brian Bouchard 403.813.7999

First Class Marketing

Darnell Fornwald 403.795.8030

Pour Informations en Francais - Bi-lingual Agent

Marc Boisvert 819.395.5502
 819.314.0367

DLMS - Mark Shologan 780.699.5082

Internet Bidding Available

D | L | M | S
 www.dlms.ca

For more information call DLMS:
 Mark Shologan 780.699.5082 or
 DLMS Purebred Team 780.991.3025

MRL

OFFERING 68 LOTS

32 BLACK SIMMENTAL BRED HEIFERS
27 RED SIMMENTAL BRED HEIFERS
9 RED ANGUS BRED HEIFERS

*Catalogue and videos can
 be viewed on our website
 www.mrlbranch.com*

Terms & Conditions

Cattle sell under the standard CSA and CAA terms and conditions.

U.S. Buyers: We welcome our U.S. Customers once again!

Phone MRL for exchange rate. MRL will do necessary testing at cost for export on females and deliver to North Portal or Dunseith Port of Entries.

Delivery

MRL will assist in arranging trucking for your purchases to central points across Canada.

Sale Headquarters

Avonmore Hotel-Carnduff, SK 306.482.3655
 Canalta Inn-Moosomin, SK 306.435.3034
 Western Stars Suite, Carlyle, SK 306.452.2700
 Perfect Inns & Suites-Estevan, SK 306.634.8585
 Western Star Inns and Suites, Carnduff 306.482.1400

Call MRL if you need assistance with accommodation.

Insurance

Alameda Agencies, Bonnie Thompson Ph: (306) 489-2250.

We strongly urge you to insure your purchases.

Identification

All sale lots will carry a CCIA tag with lot numbers

Lunch & Refreshments

Served throughout the afternoon and evening of December 10 & 11.

Cattle Viewing

Cattle will be on display at the sale barn.

Catalogue Information

EPDs are current and up-to-date as of publication date. Information in this document is believed to be accurate but any updates from the auction block will take preference.

Catalog Design

Catalog design was done by Bohrsen Marketing Services. The information in this catalog has been supplied by the seller and we believe it to be accurate. Updated supplement sheets and announcements from the block will take precedence over any printed material.

Important Sale Information



BOHRSON MARKETING WELCOME

Welcome to the McMillen Ranching Ltd. Herdbuilder Sale and the 2020 edition is one that will surely impress with depth of quality. This group of bred heifers has been selected off the top of an impressive group of females that are bred for profitability. Their customer's success is a priority and the reasoning they have selected the very best of their program to represent their worldly respected cowherd.

Home to one of the most successful bull sales on the continent, this group of MRL females are 1/2, 3/4 and full sibs to many past high selling bulls in that highly respected sale. The genetics that this group of breeds carries is the very elite and furthermore, many of the calves that they carry inside are mated to pay for your investment with the first calf. Due to the impressive quantity of females that the MRL program has, they are committed to sell the strong quality in the 68 lots that are bred for ROI.

Hard-working, dedicated, passionate and family-oriented are some words that describe the McMillen family and it is always a pleasure working alongside them to market their proven genetics. The sale has transitioned to a racehorse style for their customers safety and you can view this impressive offering at your convenience from now up to sale day. The program has proven its worth and while touring the set of bred heifers, be sure to swing in and see the awesome set of bulls for the 2021 sale on Saturday, March 6.

As always, we hope you make it to Carievale as the McMillen hospitality is always accommodating. If you can't make it, our team is very familiar with the MRL program and this set of females and if we can be of any assistance, we will be on location for closeout and would be glad to visit on the cattle and/or be of assistance bidding on cattle for the closeout. The MRL Herdbuilder Sale 2020 is a stacked offering and rest assured that you're investing in a program that is proven to work and bred for the customer's success in mind.

Best regards,
The Bohrson Marketing Team

SIGHT UNSEEN PROGRAM

For 2020 and our total online bidding format we don't want to leave anybody out. If you have interest in any of the offering but are not comfortable with the computer or are busy at closing time of the auction by all means give us a call about our Sight Unseen Program or any of our sales staff. This program has worked very well for years at our Annual Bull Sales for busy cattle persons that are unable to make it Sale Day! Give us a call or come to the ranch prior to sale day to view the cattle. Describe to us what you're looking for from the offering and you set the price. We will personally try and purchase the females on your behalf as if you were sitting in the stands most times for less than you have bid! As with the bulls we live with these cattle 365 days a year and know the genetic strengths of each individual in the offering. We're here to help our customers. Give us a call anytime any day.



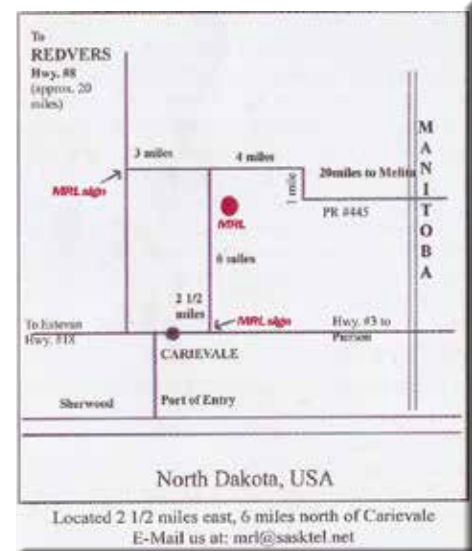
Lee McMillen
306.483.8067
306.928.4820



Dave McMillen
306.483.8660



Jim McMillen
306.483.7986
306.928.4636





KWA FUTURE 3G

- Outcross calving ease sire
- Cherry red
- Top of breed CE, BW, API nos.
- Homo Polled



RUST BULL 18C

- High selling red bull in Rust Mountain Bull Sale
- Powerful, performance sire
- Elite ET donor dam
- Combination of performance and maternal power
- Homo Polled



MRL CAPONE 130B

- One of the most intriguing bulls raised at MRL ever.
- Maternal brother to El Tigre
- Powerful cow family
- Homo Polled



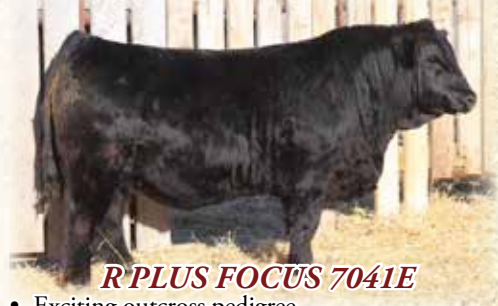
LFE KNIGHTHAWK

- \$53,000 high seller at LFE
- Outcross calving ease
- Homo Polled, Hetro Black



MRL MISSILE 138C

- High selling \$100,000 black bull in Canada in 2016
- Maybe the most exciting, consistent sire group ever at MRL
- Balanced EPD profile combining the most elite performance, maternal and calving ease in the breed
- Homo Polled; Hetro Blk



R PLUS FOCUS 7041E

- Exciting outcross pedigree
- Top 20% CE, BW, API
- Very complete head to toe
- Homo Polled; Hetro Black



WS PROCLAMATION E202

- Outcross black pedigree
- Big time donor dam
- Unmatched birth to weaning EPD numbers
- Homo Polled; Homo Black



HART STATE OF WAR 056C

- Total outcross Calving Ease Sire
- Unmatched birth to weaning spread numbers in Canada and US
- Homo Polled; Homo Black



MRL BENDER 25F

- High selling CE Bull 2019 Bull Sale
- Elite donor dam & granddam
- Top 5% CE, Top 3% WW, Top 5% YW, Top 2% MCE, Top 1% API and TI
- A young bull we're pretty excited about.



MRLA RESOURCE 137E

- Powerful \$90,000 bull that led off our 2018 sale
- Heifer calves at U2 dispersal highly sought after
- Outcross pedigree red genetics SAV Resource and SAV Harvester
- Powerful phenotype, great feet



U2 RETROSPECT 29E

- Our pick of calving ease bulls U2 Bull Sale 2018
- \$24000 Sale Highlight
- Big Time calving and maternal merit
- Cool look, substance, shape and overall structured soundness



MRLA RESPECT 42G

- The \$130,000 lead off bull in 2020 that drew so much attention.
- Impeccable phenotypically and loaded with Angus character.
- Added muscle shape and substance and effortless on the move.
- Highly proven cow family

RED SIMMENTAL BRED HEIFERS

1 MRL MISS 9479G

BW: 86 lbs WW: 946 lbs

MRL 130Y
 COME AS U R RED ROCKET
 MISS XCITING 14X
MRL MISSILE 138C
 LFE BUNDI 300X
 MRL MISS 2423Z
 MRL MISS 493U
 LFE BS LEWIS 322U
 MRL TO THE MAX 70Z
 MRL MISS 477U
MRL MISS 4304B
 MRL BLACK BEAR 79S
 MRL MISS 570U
 MRL MISS 431N

CE	BW	WW	YW	MCE	MWW	MILK
5.9	3.9	86.1	120.5	1.2	66.2	23.1
API	120.5	TI	74.35			

PE to R Plus Focus May 7 - June 10.

Grab on to every one of these Missile daughters you can. They are game changers in terms of capacity, structural soundness and overall wow factor. This one out of a Max daughter back to our famous 570U donor cow. Her last 2 daughters have stayed right here at MRL. But in 2020 we'll offer one here not usually for sale. A definite feature female here and the kind that has shaped our program here at MRL.



5 Feb 2019 : PGI273132 : Pld PB

2 MRL MISS 9547G

BW: 92 lbs WW: 882 lbs

MRL 130Y
 COME AS U R RED ROCKET
 MISS XCITING 14X
RUST BULL 18C
 IPU REVOLUTION 172U
 BEECH BROS YARA 122Y
 BEECH BROS UNNA 817U
 WHEATLAND PREDATOR 922W
 MRL EL TIGRE 52Z
 MRL MISS 836W
MRL MISS 5320C
 LCHMN BRIGHT LIGHT L122L
 MRL MISS 2330Z
 MRL MISS 486X

CE	BW	WW	YW	MCE	MWW	MILK
2.9	5.4	90	134.1	1.1	69.3	24.3
API	109.31	TI	73.7			

Bred April 28 to R Plus Focus. PE to R Plus Focus May 7 - June 10.

A definite feature female here in the red division and one that has been a favourite among visitors to the pen all along. Moderate, big time capacity and dimension and a sweet feminine head and look setting up a near perfect udder. Her pedigree is loaded with top donor cows in the breed on every line and ranks in the top end of the breed for performance numbers. This one will be a definite cornerstone female that will raise some herdbulls.



17 Jan 2019 : PGI276361 : Pld PB

3 MRL MISS 9445G

BW: 90 lbs WW: 780 lbs

R PLUS HARD ROCK 145X
 R PLUS RELOAD 2006Z
 IPU RED BARONESS 1T
BBS LOAD 'M UP D20Z
 MRL RINGMAN 112Z
 BBS RINGMAN B40
 BBS GEMINI Y53
 WS BEEF MAKER R13
 IPU RED WESTERN 49X
 IPU 52N POCAHONTAS 215U
MRL MISS 2459Z
 MRL STORM 140T
 MRL MISS 775W
 TH RED DREAM LASS 39R

CE	BW	WW	YW	MCE	MWW	MILK
6	3.6	75.3	116.5	4.4	59.8	22.1
API	119.38	TI	71.56			

Bred April 16 to MRL Bender 25F. PE to R Plus Focus May 7 - June 10.

The young Load Em Up daughters we have milking are powerful females with beautiful udders. The dam is one of our awesome Red Western daughters that has raised herdbulls for Dale Laturnas and Barry Elliott. A strong set of numbers and bred early to Bender who was the high selling outcross pedigree, big time numbered calving ease bull in our 2019 sale to Little

28 Jan 2019 : PGI273154 : Pld PB

4 MRL MISS 9510G

BW: 90 lbs WW: 862 lbs

LFE VIPER 455U
 NCB COBRA 47Y
 NCB MISS DREAM 22T
R PLUS VENOM 4006B
 DRAKE POKER FACE 2X
 IPU MS. TULA 104Z
 D BAR C BLK SATIN 680S
 LFE BS LEWIS 322U
 MRL TO THE MAX 70Z
 MRL MISS 477U
MRL MISS 4393B
 TNT GUNNER N20B
 MRL MISS 568U
 MISS MRL 774K

CE	BW	WW	YW	MCE	MWW	MILK
7.8	3.6	83.6	122.8	4.7	64.4	22.6
API	117.36	TI	70.43			

PE to R Plus Focus May 7 - June 10.

An own daughter of the \$50,000 Venom bull whose sons were the talk of the barn last spring at the bull sale. The great grandam is our old 774K donor cow.

5 Feb 2019 : PGI273180 : Pld PB

5 MRL MISS 9545G

BW: 90 lbs WW: 806 lbs

DCR MR MOON SHINE X102
 TNT BOOTLEGGER Z268
 TNT MISS W70
MRL RED WHISKEY 101B
 KOP CROSBY 137W
 MRL MISS 677Y
 MRL MISS 355T
 MR NLC SUPERIOR S6018
 LFE BUNDI 300X
 LFE DAKOTA COAL 64P
MRL MISS 2314Z
 KOP STOCKMAN 134S
 MRL MISS 557U
 DUSTY'S VIXEN 30R

CE	BW	WW	YW	MCE	MWW	MILK
4.5	5.3	88.9	125.6	3.3	69	24.5
API	114.71	TI	74.93			

Bred April 20 to KWA Future. PE to R Plus Focus May 7 - June 10.

I sure hope you can stop by to look at this pen of heifers prior to our online bidding sale. It will be well worth the drive as we have dug deep for 2020 offering females out of our most elite and highly proven cow families. This one in particular is an own Whiskey daughter out of an ET daughter of Bundi and our 557U donor cow that has raised top selling bulls to Schmitt Ranch and Hamman Simmentals in North Dakota. No guesswork here.

10 Jan 2019 : PG1273258 : Pld PB

RED SIMMENTAL BRED HEIFERS

6 MRL MISS 9412G

BW: 92 lbs WW: 828 lbs

RCC/TCF LINE DRIVE M181
SPRINGCREEK LINER 56U
NEVAS L93
SPRINGCREEK BLUE CHIP 9D
MSR KANSAS TANK 235M
SPRINGCREEK TARA 111R
SPRINGCREEK BROOKE 38L

KOP CROSBY 137W
MRL 91Y
MRL MISS 493U
MRL MISS 5389C
IPU RED WESTERN 49X
MRL MISS 2445Z
MRL MISS 319T

CE	BW	WW	YW	MCE	MWW	MILK
7.9	2.9	83.1	123.3	8.3	75.7	34.1
API	124.65	TI	73.64			

Bred April 6 to MRL Bender 25F; April 24 to KWA Future. PE to R Plus Focus May 7 - June 10.

A contender here for the pick of the pen. On paper she is loaded with a stacked pedigree and her dam in one of our most beautiful cows. A direct 91Y (Destination) daughter that we flushed last spring. Her feature Whiskey son sold to Berndt Ranch, ND in 2019. One here that can't help but be a powerful cow.

20 Jan 2019 : PG1276365 : Pld PB

7 MRL MISS 9466G

BW: 94 lbs WW: 972 lbs

RCC/TCF LINE DRIVE M181
SPRINGCREEK LINER 56U
NEVAS L93
SPRINGCREEK BLUE CHIP 9D
MSR KANSAS TANK 235M
SPRINGCREEK TARA 111R
SPRINGCREEK BROOKE 38L

MUIRHEAD LIVE WIRE 95R
KOP CROSBY 137W
KOP MS BENGIE 6P
MRL MISS 647Y
LCHMN BODYBUILDER 7303F
NUG ROSIE 538R
NUG MISS FLICK

CE	BW	WW	YW	MCE	MWW	MILK
2.3	5.4	94.1	137.3	6	78.2	31.1
API	117	TI	73.57			

Bred April 16 & May 5 to KWA Future. PE to R Plus Focus May 7 - June 10.

A homo polled female here with big time potential and just look at this pedigree. Liner 56U, Spring Creek Tara, Crosby, Bodybuilder. The dam raised the \$20,000 Capone son MRL Roosevelt in 2017 to one of the top Simmental breeding programs in North Dakota, Mandan Lake Simmentals.

16 Jan 2019 : PG1276518 : Pld PB

8 MRL MISS 9439G

BW: 52 lbs WW: 852 lbs

KLONDIKE GOLD RUSH 418B
ANCHOR "T" RUSTY 59G
ANCHOR "T" HELGA 10Y
STARWEST POL BLUEPRINT
CHAMPS BRAVO
PHS HOMOZYGOUS XCEPTIONAL
WCC WELLS' PLD TALULAH 7T

MRL INTEGRITY 76Y
MRL DISCOVERY 21A
TSN MS EDITION 55W
MRL MISS 5341C
GW LUCKY DICE 187H
MRL MISS 748R
MRL MISS 487N

CE	BW	WW	YW	MCE	MWW	MILK
11.2	2.9	78.7	121.2	8	71.2	31.8
API	122.65	TI	73.08			

Bred April 6 & May 4 to MRL Bender 25F. PE to R Plus Focus May 7 - June 10.

We used the Starwest Pol Blueprint fullblood bull on some of our really elite black cows and did it ever work as you can see by this offering. Her dam is a beauty, powerful Discovery daughter back to the old 748R cow family that sent as many top end bulls to our bull sale as any other. This red blaze beauty won't be hard to identify in the sale pen. Bred to the exclusive MRL Bender sire is icing on the cake.



15 Feb 2019 : PG1273235 : Pld PB

RED SIMMENTAL BRED HEIFERS

9 MRL MISS 9585G

BW: 86 lbs WW: 724 lbs

WFL ABSOLUTE 51Y
R PLUS 5015C
IPU MS. 56U LINER 15A
R PLUS FOCUS 7041E
R PLUS HARD ROCK 145X
MISS R PLUS 5102C
MISS R PLUS 8094U
COME AS U R RED ROCKET
MRL MISSILE 138C
MRL MISS 2423Z
MRL MISS 7327E
DASR MR 8Y
MRL MISS 4515B
MRL MISS 850W

CE	BW	WW	YW	MCE	MWW	MILK
6.7	2.9	78.6	115.4	2.3	64.2	24.9
API	116.65	TI	70.39			

Bred April 15 to Red Force. PE to Red Circle G Guardian 41G May 7 - June 10.

This one is a sweetheart and one that has garnered attention from some top cattlemen to the pen thus far. A testimony to what these Missile daughters are capable of on their first try and the breeding prowess of the Focus bull. A rare service to the old master himself MRL Red Force (who semen is almost extinct). Don't miss this one.



12 Feb 2019 : PG1273234 : Pld PB

10 MRL MISS 9572G

BW: 75 lbs WW: 722 lbs

WFL ABSOLUTE 51Y
R PLUS 5015C
IPU MS. 56U LINER 15A
R PLUS FOCUS 7041E
R PLUS HARD ROCK 145X
MISS R PLUS 5102C
MISS R PLUS 8094U
TNT BOOTLEGGER Z268
MRL RED WHISKEY 101B
MRL MISS 677Y
MRL MISS 7335E
KOP TRUE NORTH 103Y
MRL MISS 3344A
MRL MISS 470U

CE	BW	WW	YW	MCE	MWW	MILK
11.1	0.9	72.8	105	7.5	60.8	24.4
API	127.38	TI	72.42			

Bred April 3 to North Western; April 23 to North Western. PE to Red Circle G Guardian 41G May 7 - June 10.

Same cow family here as Lot 24. This red pen of heifers really offers some elite females out of our top cow families this year. Big time ROI opportunities on this dandy Focus female with service to MRL North Western. These Focus females are beauties. This one needs to be seen in person as the picture does her no justice.



8 Feb 2019 : PG1273232 : Pld PB

11 MRL MISS 9558G

BW: 80 lbs WW: 704 lbs

WFL ABSOLUTE 51Y
R PLUS 5015C
IPU MS. 56U LINER 15A
R PLUS FOCUS 7041E
R PLUS HARD ROCK 145X
MISS R PLUS 5102C
MISS R PLUS 8094U
COME AS U R RED ROCKET
MRL MISSILE 138C
MRL MISS 2423Z
MRL MISS 7332E
LFE BUNDI 300X
MRL MISS 2323Z
MRL MISS 76U

CE	BW	WW	YW	MCE	MWW	MILK
6.6	2.4	74.2	107.9	2.1	57.1	20
API	118.78	TI	68.13			

Bred April 16 to Western; May 5 to Western. PE to Red Circle G Guardian 41G May 7 - June 10.

Sired by the high selling bull at R Plus in 2018 and out of an awesome first calving Missile daughter. This is a dandy cow in the making with a pretty cool pedigree and a rare service to the awesome totally exclusive Red Western bull himself. We only have a few straws of Western left and breed some of the top heifers in the pen that way, that are supposed to stay at home.

15 Feb 2019 : PG1276526 : Pld PB

12 MRL MISS 9583G

BW: 80 lbs WW: 792 lbs

KOP CROSBY 137W
MRL 91Y
MRL MISS 493U
MRL 139A
TNT GUNNER N208
MRL MISS 753W
MRL MISS 511N
WHEATLAND CIRCUIT BREAKER
WHEATLAND KILL SWITCH
HR/RR MS CANDACE T73
COME AS U R STACY 739E
LFEBISS BLACKADVANCE 426U
MRL MISS 814Y
HAAS RANCH P63

CE	BW	WW	YW	MCE	MWW	MILK
8.7	3.2	76.2	110	5.8	69.2	31.1
API	126.08	TI	72.74			

Bred April 3 & May 5 to MRL Bender 25E. PE to R Plus Focus May 7 - June 10.

A sweet made moderate framed female here sired by one of Destination 91 Y's top sons and a female we purchased from Come As UR out of an ET female they purchased here at MRL going back to the P63 Haas donor matron. Her service to MRL Bender will be the perfect mating.

26 Jan 2019 : PG1273204 : Pld PB

13 MRL MISS 9501G

BW: 68 lbs WW: 736 lbs

KUNTZ MARSHALL 12Y
KUNTZ SHERIFF 8A
PEACOCK'S LI'L NETTIE 23Y
MRL PROGRESS 152D
MRL BLACK BEAR 79S
MRL MISS 836W
MRL MISS 828S
MRL INTEGRITY 76Y
MRL VIRTUE 103B
MRL MISS 447X
MRL MISS 6779D
TNT POWER SURGE T404
MRL MISS 2519Z
MRL MISS 677W

CE	BW	WW	YW	MCE	MWW	MILK
4	4.6	83.9	126.2	0.6	69.9	27.9
API	106.37	TI	69.69			

Bred April 6 to North Western. PE to R Plus Focus May 7 - June 10.

We really like these Progress females. Tons of substance yet a very attractive look to them. On the bottom side is a tank of a cow that had a bull going to Glencoe Stock Farms her first try.

RED SIMMENTAL BRED HEIFERS

29 Jan 2019 : PGI273130 : Pld PB

14 MRL MISS 9514G

BW: 74 lbs WW: 900 lbs

MRL EL TIGRE 52Z
MRL PREDESTINED 63B
TSN MS EDITION 55W
MRL PRISM 31D
IPU RED WESTERN 49X
MRL MISS 2368Z
MRL MISS 470U
DCR MR MOON SHINE X102
TNT BOOTLEGGGER Z268
TNT MISS W70
MRL MISS 5319C
MRL HAMMER 125X
MRL MISS 2438Z
MRL MISS 477U

CE	BW	WW	YW	MCE	MWW	MILK
4.5	5	81.2	113.7	1.7	70.2	29.6
API	111.72	TI	71.55			

Bred April 6 to KWA Future. PE to R Plus Focus May 7 - June 10.

This pair of twin Prism daughters have garnered some attention in the pen already. They are like peas in a pod flawless in their makeup and setting up near perfect udders. As soon as I pull up their pedigree I see why as they are descendants of our most powerful red cow family EVER going back to the 477U matron herself. Both bred early to Future. Gonna miss these 2 here at MRL.



29 Jan 2019 : PGI276519 : Pld PB

15 MRL MISS 9515G

BW: 70 lbs WW: 788 lbs

MRL EL TIGRE 52Z
MRL PREDESTINED 63B
TSN MS EDITION 55W
MRL PRISM 31D
IPU RED WESTERN 49X
MRL MISS 2368Z
MRL MISS 470U
DCR MR MOON SHINE X102
TNT BOOTLEGGGER Z268
TNT MISS W70
MRL MISS 5319C
MRL HAMMER 125X
MRL MISS 2438Z
MRL MISS 477U

CE	BW	WW	YW	MCE	MWW	MILK
4.5	5	81.2	113.7	1.7	70.2	29.6
API	111.72	TI	71.55			

Bred April 17 to KWA Future. PE to R Plus Focus May 7 - June 10.



23 Jan 2019 : PTGI276623 : Homo Pld PB

16 MRL MISS 9483G

BW: 87 lbs WW: 906 lbs

TNT TOP GUN R244
LFE VIPER 455U
LFE CHARO 56K
NCB COBRA 47Y
CNS DREAM ON L186
NCB MISS DREAM 22T
NUG SANDY 506R
TNT DYNAMITE BLACK L137
TH BLACK EDITION 8R
BBN MS BLACK LADY 28H
TSN MS EDITION 55W
LFE RED HEMI 391N
MRL MISS 899S
MRL MISS 541N

CE	BW	WW	YW	MCE	MWW	MILK
10.2	3	81.8	119.7	9.8	69.7	28.8
API	124.15	TI	73.53			

Bred April 1 to Starter. PE to R Plus Focus May 7 - June 10.

A cherry red, non-dilutor, homo polled female here you can buy on pedigree alone. A Cobra x 55W period. Huge ROI potential here.

2019 : unregistered : Hybrid

17 MRL MISS 9444G

BW: lbs WW: lbs

RED LSF SAGA 1040Y
RED PIE SPECIALIST 430
RED PIE PLAYMATE 232
RED COCKBURN ASSASSIN 624D
RED LAZY MC HUSTLE 18T
RED COCKBURN CORA 254Z
RED WILBAR CORA 443P
RED U-2 RECKONING 149A
RED U-2 RENOWN 193C
RED U-2 ENVOIOUS 147X
MRL MISS 7380E
RED MRLA WILD FIRE 15Z
MRLA 4321B
MRLA 780Y

Bred April 20 to R Plus Focus. PE to R Plus Focus May 7 - June 10.

An Angus influenced hybrid heifer here bred to the Focus bull early.

2 Feb 2019 : UNRI326392 : Pld 3/4 blood

18 MRL MISS 9537G

BW: 80 lbs WW: 694 lbs

W/C LOCK DOWN 206Z
WS STEPPING STONE B44
WS MS UPGRADE Z15
MUIRHEADS STONE 85D
WHEATLAND BULL 680S
MUIRHEADS MACY 3W
TESS MS BLACK 115T
SVS OPEN RANGE 28Y
SVS MILWAUKEE 53A
DESTINY DREAM EILEEN
MRL MISS 5455C
RED ANGUS/RED ANGUS

CE	BW	WW	YW	MCE	MWW	MILK
11.1	0.1	52.6	86.6	5.4	50.4	24.1
API	105.99	TI	56.89			

Bred March 30 to MRL Red Force. PE to R Plus Focus May 7 - June 10.

A 3/4 blood Stone daughter here. She will be homo polled, non-dilutor and bred early to the \$30,000 MRL Red Force bull himself.

22 Jan 2019 : PG1273139 : Pld PB

RED SIMMENTAL BRED HEIFERS

19 MRL MISS 9476G

BW: 92 lbs WW: 818 lbs

DCR MR MOON SHINE X102
 TNT BOOTLEGGGER Z268
 TNT MISS W70
MRL CAPONE 130B
 MRL BLACK BEAR 79S
 MRL MISS 836W
 MRL MISS 828S
 IPU RED WESTERN 49X
 KWA FLYF RED MOUNTAIN 16Z
 KWA MS ROCK 14X
KWA MS MOUNTAIN 23B
 LFE HOT IRON 812W
 IPU BARBI 17Z
 TYMARC BARBI 86U

CE	BW	WW	YW	MCE	MWW	MILK
6.2	3.9	72	109	1.9	59.3	23.3
API	110.47	TI	69.77			

Bred April 22 to KWA Future. PE to R Plus Focus May 7 - June 10.

The Capone daughters have developed into some of our most productive young cows. This dark red attractive female will add capacity. Her dam was a \$16,000 purchase and our pick at Ashworth's heifer sale in 2017. Pretty stacked pedigree here and bred to the outcross KWA Future bull.



17 Jan 2019 : PG1276360 : Pld PB

20 MRL MISS 9442G

BW: 85 lbs WW: 844 lbs

CNS DREAM ON L186
 WS PILGRIM H182U
 WS MARLA 276M
CCLT ALLIANCE 91C
 BB BARACK 1017T
 BROOKS SHINIA 1A
 BROOKS RED HOT Y17
 TNT BOOTLEGGGER Z268
 MRL RED WHISKEY 101B
 MRL MISS 677Y
TSN MS WHISKEY 41E
 IPU RED NUGGET 132N
 TSN MS NUGGET 43A
 TSN MS SHOCKER 53S

CE	BW	WW	YW	MCE	MWW	MILK
6	4.5	87.8	119.3	4.6	66	22.1
API	108.31	TI	74.63			

PE to R Plus Focus May 7 - June 10.

We purchased her dam as a feature lot in the Shades of the Prairies Sale from TSN and she did a heck of a job on her first one. The Alliance x Whiskey combination is a true blend of power and pretty.



22 Jan 2019 : PG1273229 : Pld PB

21 MRL MISS 9474G

BW: 82 lbs WW: 786 lbs

CNS DREAM ON L186
 WS PILGRIM H182U
 WS MARLA 276M
CCLT ALLIANCE 91C
 BB BARACK 1017T
 BROOKS SHINIA 1A
 BROOKS RED HOT Y17
 LFE GOTHAM 819Y
 LFE THE RIDDLER 323B
 LFE BS CHARO 23Y
MRL MISS 7317E
 LFE BS LEWIS 322U
 MRL MISS 2317Z
 MRL MISS 952S

CE	BW	WW	YW	MCE	MWW	MILK
8.9	3.2	82.7	109.7	3.6	59	17.6
API	121.09	TI	75.16			

Bred April 11 & April 21 to KWA Future. PE to R Plus Focus May 7 - June 10.

Stacked pedigree and top of the breed numbers here. This cow family is second to none at MRL. Her grandam would rank as one of the stoutest, most impressive cows to ever walk our pastures and is a maternal sister to our famous 493U donor cow.

22 Jan 2019 : PG1268942 : Pld PB

22 MRL MISS 67G

BW: 105 lbs WW: 834 lbs

TNT BOOTLEGGGER Z268
 MRL CAPONE 130B
 MRL MISS 836W
MRL REGULATOR 148D
 KOP CROSBY 137W
 MRL MISS 677Y
 MRL MISS 355T
 KOP CROSBY 137W
 MRL 91Y
 MRL MISS 493U
MRL MISS 3354A
 BBS DAKOTA RED L68
 MRL MISS 632P
 MISS MRL 491G

CE	BW	WW	YW	MCE	MWW	MILK
5.4	5	81.7	115	6.1	77	36.1
API	117.31	TI	71.5			

Bred April 8 to North Western. PE to R Plus Focus May 7 - June 10.

A powerful Regulator daughter here out of a beauty 91Y daughter back to the 632P matron who is a maternal sister to our 863S and 470U donor cows. She has raised lead off bulls for TICA, SK, Randy Geisler, MB, and Korey Jorgenson, ND. On the top side of the pedigree is our 836W and 677Y donors as well. One of the most stacked pedigrees in the entire offering and will surely breed true. Bred early to the exciting and exclusive MRL North Western bull that went to Bata Simmentals, ND.

30 Jan 2019 : PGI273142 : Pld PB

RED SIMMENTAL BRED HEIFERS

23 MRL MISS 9521G

BW: 86 lbs WW: 904 lbs

TNT BOOTLEGGER Z268
 MRL CAPONE 130B
 MRL MISS 836W
MRL REGULATOR 148D
 KOP CROSBY 137W
 MRL MISS 677Y
 MRL MISS 355T
 LFE STRAIT UP 454W
 WFL MR WESTWAY 32Y
 WFL MISS ASPHALT 7012T
WFL HINSDALE LADY 353A
 NCB RED DREAM 23T
 WFL MS RED HINSDALE 1083X
 WFL MS 61 HINSDALE 8098U

CE	BW	WW	YW	MCE	MWW	MILK
8.1	3.2	81.6	119.9	5.2	67.5	26.7
API	133.19	TI	76.59			

Bred April 6 to KWA Future. PE to R Plus Focus May 7 - June 10.

It's hard to part with this one. She is a stunner and true blend of power and look. Her dam is a beauty cow we purchased as the lead off \$10,000 female from the good folks at Westway Farms a couple years back. A pedigree that is pretty cool, dark red, flawless phenotype and bred early to the outcross high selling Future bull, as I said, hard to part with.



13 Feb 2019 : PGI273135 : Pld PB

24 MRL MISS 9579G

BW: 88 lbs WW: 916 lbs

TNT POWER SURGE T404
 MRL SEISMIC 90Y
 MRL MISS 863S
MRL NORTH FACE 74B
 MRL RED FORCE 12U
 MRL MISS 369X
 MRL MISS 498N
 CMS TRADEMARK 756T
 KOP TRUE NORTH 103Y
 KOP MS BENGIE 96R
MRL MISS 3344A
 TNT GUNNER N208
 MRL MISS 470U
 MISS MRL 491G

CE	BW	WW	YW	MCE	MWW	MILK
8.8	3.6	81.3	112.2	6.6	77.9	37.2
API	135.42	TI	77.03			

Bred April 5 & April 21 to North Western. PE to R Plus Focus May 7 - June 10.

You're going to like these North Face daughters they turn into beautiful cows. On the bottom side once again a ET daughter of the 470U cow that has raised two feature bulls to Cameron Land & Cattle and Spring Creek Colony as well as 2 big time daughters in our herd. Grab onto these daughters of this cow family as we rarely ever offer these for sale.



10 Feb 2019 : PGI276522 : Pld PB

25 MRL MISS 9568G

BW: 95 lbs WW: 858 lbs

TNT POWER SURGE T404
 MRL SEISMIC 90Y
 MRL MISS 863S
MRL NORTH FACE 74B
 MRL RED FORCE 12U
 MRL MISS 369X
 MRL MISS 498N
 TNT POWER SURGE T404
 MRL HAMMER 125X
 MRL MISS 443N
MRL MISS 3480A
 TH BLACK EDITION 8R
 MRL MISS 801W
 TSN REBECCA 8R

CE	BW	WW	YW	MCE	MWW	MILK
5.3	5	77.1	104.7	2.3	75.2	36.6
API	121.76	TI	71.92			

Bred April 2 to Starter. PE to R Plus Focus May 7 - June 10.

One here that will raise some herdbulls. We have retained 2 full sisters out of the powerful Hammer cow going back to the TSN Rebecca donor cow. The North Face bull was a feature in our 2015 sale going to Rust and Canadian Sires that is flawless in his design and a real female maker. One of the stoutest dark red females in the offering and early service to none other than MRL Starter himself.



26 Jan 2019 : PGI273195 : Pld PB

RED SIMMENTAL BRED HEIFERS

26 MRL MISS 9503G

BW: 90 lbs WW: 858 lbs

WHEATLAND PREDATOR 922W
 MRL EL TIGRE 52Z
 MRL MISS 836W
MRL PREDESTINED 63B
 TH BLACK EDITION 8R
 TSN MS EDITION 55W
 MRL MISS 899S
 LFE BS LEWIS 322U
 LFE RED CASINO 3036X
 LFE DREAM LADY 112P
MRL MISS 3494A
 TNT GUNNER N208
 MRL MISS 470U
 MISS MRL 491G

CE	BW	WW	YW	MCE	MWW	MILK
4.2	4.6	70.8	96.8	2.5	60.5	25.1
API	97.66	TI	61.29			

Bred April 12 to KWA Future. PE to R Plus Focus May 7 - June 10.
 Sired by the \$48,000 MRL Predestined bull in 2015 going to Semex and Skors which will add the 55W influence to the pedigree. But not outdone on the bottom side a Casino daughter out of the irreplaceable 470U donor cow. Our top revenue earning black cow on the top and top red cow family on the bottom. Bred to the exciting KWA Future bull. Can't go wrong here.



10 Feb 2019 : PGI276500 : Pld PB

27 MRL MISS 9566G

BW: 80 lbs WW: 784 lbs

W/C LOCK DOWN 206Z
 WS STEPPING STONE B44
 WS MS UPGRADE Z15
MUIRHEADS STONE 85D
 WHEATLAND BULL 680S
 MUIRHEADS MACY 3W
 TESS MS BLACK 115T
 TNT KNOCK OUT R206
 HRS TOUCHDOWN T39
 HAAS RANCH P63
MRL MISS 2572Z
 LFE RED HEMI 391N
 MRL MISS 689R
 MISS MRL 491G

CE	BW	WW	YW	MCE	MWW	MILK
7.9	1.9	68.3	111.9	4.3	58.3	24.1
API	124.47	TI	70.05			

Bred April 16 to North Western. PE to R Plus Focus May 7 - June 10.
 Total outcross pedigree here and goes back to the 689R cow a natural sister to our famous 863S and 470U donor cows. A sleeper here and mated to the exclusive MRL North Western sire.



MRL HERD HEALTH ON SALE CATTLE

All sale cattle are under our full herd health protocol

- Bovi Shield Gold FP5
- Tasvax 8
- 1st shot Scourguard 4KC
- Bimectin
- All double vaccinated as calves Bovigold one shot and Ultrabac 7



12 Jan 2019 : BPG1273158 : Pld PB

BLACK SIMMENTAL BRED HEIFERS

28 MRL MISS 9420G

BW: 90 lbs WW: 914 lbs

MRL 130Y
COME AS U R RED ROCKET
MISS XCITING 14X
MRL MISSILE 138C
LFE BUNDI 300X
MRL MISS 2423Z
MRL MISS 493U

CNS DREAM ON L186
HTP SVF IN DEW TIME
HTP SVF HONEYDEW
MRL MISS 3355A
WHEATLAND PREDATOR 922W
MRL MISS 6 12Y
MRL MISS 365T



CE	BW	WW	YW	MCE	MWW	MILK
9	2.6	82.1	112.5	3.4	60.2	19.1
API	121.88	TI	71.97			

Bred April 13 & May 1 to Proclamation. PE to R Plus Focus May 7 - June 10.

When you make your living selling herdbulls it is extremely hard to part with this kind. Each and every year we part with a few of the elite females that should never leave MRL and for 2020 this is definitely one. She is a flat-out tank and just has that look and sweet disposition that makes her a pen favourite. On paper she is royally bred of course being sired by the \$100,000 Missile sire who's breeding prowess is unmatched in the breed in terms of type and consistency. On the bottom side is a super productive young cow that has already landed a herdbull for Tony McMechan and a feature daughter to McIntosh Livestock in 2018. Her Riddler bull calf for this spring's bull sale will also be a contender for king of the pen come March. The chance to own this kind doesn't come along very often.

14 Jan 2019 : BPG1273147 : Pld PB

29 MRL MISS 9427G

BW: 92 lbs WW: 856 lbs

MRL 130Y
COME AS U R RED ROCKET
MISS XCITING 14X
MRL MISSILE 138C
LFE BUNDI 300X
MRL MISS 2423Z
MRL MISS 493U

TNT GUNNER N208
TNT POWER SURGE T404
GSR MS JOKER 113L
MRL MISS 3406A
GGL 230K
NAC PHYLCIA 30P
KAPPES LEANN L261



CE	BW	WW	YW	MCE	MWW	MILK
5.2	4.3	81.5	113.7	0.4	63.1	22.3
API	113.6	TI	69.11			

Bred April 10 to State of War. PE to R Plus Focus May 7 - June 10.

Don't miss your opportunity to acquire one of these Missile daughters we are reluctantly offering for sale and especially out of this dandy Power Surge cow that had a top bred going to Caledonia Simmentals in 2019 sale, a feature open heifer to Jackson Goudy for \$8250 in 2016 and a big time Discovery son to Steichen Simmentals, ND, in 2017. Powerful proven genetics here folks.

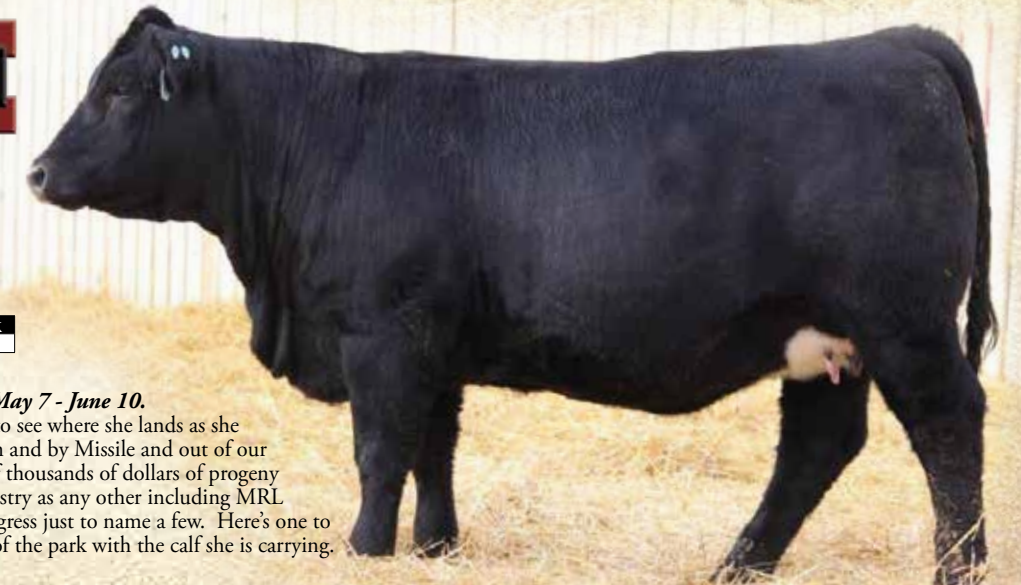
21 Jan 2019 : BPG1273156 : Homo Pld PB

30 MRL MISS 9471G

BW: 90 lbs WW: 876 lbs

MRL 130Y
COME AS U R RED ROCKET
MISS XCITING 14X
MRL MISSILE 138C
LFE BUNDI 300X
MRL MISS 2423Z
MRL MISS 493U

SVS OPEN RANGE 28Y
SVS MILWAUKEE 53A
DESTINY DREAM EILEEN
MRL MISS 5363C
TH BLACK EDITION 8R
MRL MISS 443X
MRL MISS 443N



CE	BW	WW	YW	MCE	MWW	MILK
6.6	4	82.8	115.4	2.5	66.6	25.2
API	120.88	TI	71.7			

Bred March 30 to State of War. PE to R Plus Focus May 7 - June 10.

This is another one that is hard to part with but excited to see where she lands as she will make an impact on a breeding program. Once again and by Missile and out of our famous 443N cow family that has produced hundreds of thousands of dollars of progeny here at MRL and as many big time herdbulls in the industry as any other including MRL Capone, El Tigre, Hurricane, Red Force, Sleep Easy, Progress just to name a few. Here's one to build a cow family around and she just might hit it out of the park with the calf she is carrying. Early service to Hart State of War. Homo polled.

16 Jan 2019 : BPG1276359 : Pld PB

BLACK SIMMENTAL BRED HEIFERS

31 MRL MISS 9441G

BW: 90 lbs WW: 872 lbs

MRL 130V
 COME AS U R RED ROCKET
 MISS XCITING 14X
MRL MISSILE 138C
 LFE BUNDI 300X
 MRL MISS 2423Z
 MRL MISS 493U
 MUIRHEAD LIVE WIRE 95R
 KOP CROSBY 137W
 KOP MS BENGIE 6P
SRH PRECIOUS 54A
 HTP SVF IN DEW TIME
 OBCC CHYNA C49U
 SILVERSTONE CHYNA MARIE

CE	BW	WW	YW	MCE	MWW	MILK
7.1	3.5	82.2	113.3	3.7	67.2	26.1
API	119.72	TI	71.76			

Bred April 2 to State of War. PE to R Plus Focus May 7 - June 10.

The consistency and quality of these Missile daughters is undeniable. This one offers a powerful pedigree on the bottom side as well. Her dam is a female we purchased out of the Shades sale from Hanford Simmentals, a black Crosby out of their consistent OBCC CHYNA donor. A full sister went to Wilson Stock Farms in last year's sale.



25 Jan 2019 : BPG1273129 : Homo Pld PB

32 MRL MISS 9491G

BW: 86 lbs WW: 774 lbs

MRL 130V
 COME AS U R RED ROCKET
 MISS XCITING 14X
MRL MISSILE 138C
 LFE BUNDI 300X
 MRL MISS 2423Z
 MRL MISS 493U
 MR NLC SUPERIOR S60 18
 LFE BUNDI 300X
 LFE DAKOTA COAL 64P
MRL MISS 3314A
 TNT KNOCK OUT R20G
 MRL MISS 310X
 MRL MISS 847S

CE	BW	WW	YW	MCE	MWW	MILK
7.1	2.9	80.9	112.6	0.5	56.3	15.8
API	118.55	TI	69.6			

Bred April 25 to State of War. PE to R Plus Focus May 7 - June 10.

Homo polled. This one's destined to be a big time producer. A direct Missile daughter out of the 310X donor cow. Enough said.



14 Jan 2019 : BPG1268806 : Pld PB

33 MRL MISS 9430G

BW: 94 lbs WW: 878 lbs

MR HOC BROKER
 LFE RICH RAY 369Z
 LFE BS DAKOTA COAL 25X
LFE BS LEWIS 420B
 LFE BISS BLACKADVANCE 426U
 LFE HEAVEN SENT 30X
 LFE BS MISS LEWIS 614S
 WS BEEF MAKER R13
 IPU RED WESTERN 49X
 IPU 52N POCAHONTAS 215U
MRL MISS 5374C
 MRL BLACK BEAR 79S
 MRL MISS 389X
 MRL MISS 870S

CE	BW	WW	YW	MCE	MWW	MILK
6.7	2.9	70	110.2	3.6	58.1	23.1
API	118.07	TI	69.18			

Bred April 3 to MRL Bender 25F. PE to R Plus Focus May 7 - June 10.

A Red Western x Black Bear female on the bottom side and the Heaven Sent 30X donor on the top this one can't help but be a great cow. The only way to acquire the Bender service is here or from Little Rainbow Ranch as we have kept his rights exclusive to our 2 programs.

10 Jan 2019 : BPG1273257 : Pld PB

34 MRL MISS 9413G

BW: 89 lbs WW: 814 lbs

LFE THE DARK NIGHT 350U
 LFE GOTHAM 819Y
 LFE BEST LADY 47W
LFE THE RIDDLER 323B
 TNT TANKER U263
 LFE BS CHARO 23Y
 LFE CHARO 3N
 TNT DYNAMITE BLACK L137
 TH BLACK EDITION 8R
 BBN MS BLACK LADY 28H
MRL MISS 4414B
 MRL 67X
 MRL MISS 2472Z
 MRL MISS 455X

CE	BW	WW	YW	MCE	MWW	MILK
7.2	2.3	86.4	131.8	6.5	68.3	25.1
API	131.87	TI	80.47			

Bred April 16 to Proclamation. PE to R Plus Focus May 7 - June 10.

The Riddler x Black Edition combination is just flat out awesome. A maternal sister was one of the top heifers on offer last full going to Circle M Farms top herd in Manitoba. Don't miss this one, she will be a producer and bred to the exciting Proclamation sire is pretty cool.

7 Mar 2019 : BPG1295277 : Pld PB

35 MRL MISS 9612G

BW: 88 lbs WW: 774 lbs

R PLUS HARD ROCK 145X
 R PLUS RELOAD 2006Z
 IPU RED BARONESS 1T
BBS LOAD 'M UP D202
 MRL RINGMAN 112Z
 BBS RINGMAN B40
 BBS GEMINI Y53
 ELLINGSON LEGACY M229
 MR NLC SUPERIOR S60 18
 EBS JOKERS CAREN
MRL MISS 426X
 BBS ZIMA D55
 MRL MISS 290M
 MISS SNAPSHOT 20G

CE	BW	WW	YW	MCE	MWW	MILK
4.8	4	82.3	124.3	3.2	60.5	19.3
API	112.43	TI	69.53			

Bred April 6 & April 26 to R Plus Focus. PE to R Plus Focus May 7 - June 10.

The youngest heifer in the sale but you would never know it. This cow family has always been noted for extra stout in our herd. Top sisters have sold to Green Valley Ranch and TSN Livestock. Her sire, the BBS Load em Up bull is one impressive dude and one we are using heavily here at MRL. The daughters are powerful and perfect uddered. The Focus service will really work on this one.

15 Feb 2019 : BPG1273216 : Pld PB

BLACK SIMMENTAL BRED HEIFERS

36 MRL MISS 9582G

BW: 58 lbs WW: 814 lbs

MRL 130Y
COME AS U R RED ROCKET
MISS XCITING 14X
RUST BULL 18C
IPU REVOLUTION 172U
BEECH BROS YARA 122Y
BEECH BROS UNNA 817U

LFE GOTHAM 819Y
LFE THE RIDDLER 323B
LFE BS CHARO 23Y
MRL MISS 668 1D
WHEATLAND PREDATOR 922W
MRL MISS 2490Z
MRL MISS 799W



CE	BW	WW	YW	MCE	MWW	MILK
3.3	5.1	93.5	143.9	2.4	72.3	25.5
API	114	TI	78.06			

Bred April 14 to MRL Bender 25F. PE to R Plus Focus May 7 - June 10.

A powerful cow in the making here and one with donor potential. Her dam is a beauty Riddler daughter that raised a \$10,000 herdbull going to Steichen Simmentals on her first try and her bull calf for this spring is a full brother to this female on offer and will turn some heads this spring. He was the heavyweight bull at weaning and has garnered plenty of attention already. A serious contender to being the prestigious lead off bull for our 2021 bull sale at this point. The grandam is the dam of the \$16,000 MRL Warrior bull at Spring Creek Simmentals as well. Don't miss this one, she has huge potential. Her first calf by Bender could ring the bell!

13 Jan 2019 : BPG1273225 : Pld PB

37 MRL MISS 9421G

BW: 88 lbs WW: 802 lbs

FBFS WARSAW 068W
WELSH'S WARSAW 312Z
WELSHS ROSIE 102W
HART STATE OF WAR 056C
SKORS BLACK ENTICER 287Y
HART MISS 102A
HART MISS X534

MRL DISCOVERY 21A
MRL CRIME SCENE 100C
MRL MISS 396X
MRL MISS 7315E
G-SEVEN MR 54P
MRL MISS 292T
MRL MISS 472N



CE	BW	WW	YW	MCE	MWW	MILK
11.7	2.9	82.8	123.8	8	69.5	28.1
API	130.8	TI	75.74			

Bred April 10 to Knighthawk. PE to R Plus Focus May 7 - June 10.

Top of the breed EPD #'s across the board on this dandy State of War female. The resulting calf by Knighthawk will boost a pretty cool outcross pedigree. This is one worth a serious look.

10 Jan 2019 : BPG1273224 : Homo Pld PB

38 MRL MISS 9415G

BW: 91 lbs WW: 966 lbs

CNS DREAM ON L186
WS PILGRIM H182U
WS MARLA 276M
CCLT ALLIANCE 91C
BB BARACK 1017T
BROOKS SHINIA 1A
BROOKS RED HOT Y17

MRL DISCOVERY 21A
MRL CRIME SCENE 100C
MRL MISS 396X
DHS MS CRIME SCENE 14E
HOOKS SHEAR FORCE 38K
CREST'S VIEW 16Z
CREST'S VIEW 58X



CE	BW	WW	YW	MCE	MWW	MILK
9.4	3.5	78.5	109.4	6.4	60.5	21.2
API	124.02	TI	73.54			

Bred April 13 to Knighthawk. PE to R Plus Focus May 7 - June 10.

A powerful Alliance daughter here out of a beauty Crime Scene daughter we purchased at Shades of the Prairies as a lead off female from Downhill Simmentals. Pretty cool pedigree here and service to the exciting LFE Knighthawk bull will only add to that. Homo polled.

22 Jan 2019 : BPG1272373 : Pld PB

BLACK SIMMENTAL BRED HEIFERS

39 MRL MISS 9475G

BW: 98 lbs WW: 820 lbs

KLONDIKE GOLD RUSH 418B
 ANCHOR "T" RUSTY 59G
 ANCHOR "T" HELGA 10Y
STARWEST POL BLUEPRINT
 CHAMPS BRAVO
 PHS HOMOZYGOUS XCEPTIONAL
 WCC WELLS' PLD TALULAH 7T
 LFE GOTHAM 819Y
 LFE THE RIDDLER 323B
 LFE BS CHARO 23Y

MRL 111D
 TNT ON STAR S312
 MRL MISS 656U
 MRL MISS 762R

CE	BW	WW	YW	MCE	MWW	MILK
9.5	3.6	84.7	128.1	6.4	76.5	34.1
API	118.9	TI	75.07			

Bred April 14 to State of War. PE to R Plus Focus May 7 - June 10.

A feature black heifer here with a perfect blaze face and one we really hate to part with. Her dam is a beautiful Riddler daughter and grandam the old 656U female was a producer. Another daughter in our herd and 3 daughters selling to top seedstock operations Harvie Ranching, Triangle Stock Farms and Millington Ranch. The money strip will be pretty prevalent on this one. What will her SOW baby with a blaze face be worth! Keep clicking the button on your phone sale day, she is worth it!



27 Jan 2019 : BPG1276496 : Pld PB

40 MRL MISS 9504G

BW: 90 lbs WW: 812 lbs

KLONDIKE GOLD RUSH 418B
 ANCHOR "T" RUSTY 59G
 ANCHOR "T" HELGA 10Y
STARWEST POL BLUEPRINT
 CHAMPS BRAVO
 PHS HOMOZYGOUS XCEPTIONAL
 WCC WELLS' PLD TALULAH 7T
 TNT GUNNER N208
 TNT POWER SURGE T404
 GSR MS JOKER 113L

MRL MISS 348 1A
 BBS REDEYE S70
 MRL MISS 659U
 MRL MISS 700R

CE	BW	WW	YW	MCE	MWW	MILK
8.9	4.3	69.6	99.7	6	66.6	31.8
API	105.22	TI	62.07			

Bred April 17 to MRL Bender 25F. PE to R Plus Focus May 7 - June 10.

The Blue Print fullblood cattle I saw on my travels were outstanding in type so we decided to breed a few elite black cows that way and boy did it ever work. A black baldy here out of an awesome Power Surge daughter and bred Bender. Can't get much better than this!



8 Jan 2019 : BPG1273254 : Pld PB

41 MRL MISS 9407G

BW: 85 lbs WW: 882 lbs

FBFS WARSAW 068W
 WELSH'S WARSAW 312Z
 WELSHS ROSIE 102W
HART STATE OF WAR 056C
 SKORS BLACK ENTICER 287Y
 HART MISS 102A
 HART MISS X534
 COME AS U R RED ROCKET
 MRL MISSILE 138C
 MRL MISS 2423Z
MRL MISS 7409E
 MRL TURBO 96S
 MRL MISS 513X
 MRL MISS 484U

CE	BW	WW	YW	MCE	MWW	MILK
11.7	1.7	82.5	120	6.3	66.6	25.3
API	133.79	TI	75.42			

Bred April 4 & April 26 to R Plus Focus. PE to R Plus Focus May 7 - June 10.

This State of War x Missile combination really works. Top of the breed numbers across the board, extra substance and make you look eye appeal. Really like this one and love her mother.

26 Jan 2019 : BPG1273208 : Pld PB

42 MRL MISS 9502G

BW: 98 lbs WW: 832 lbs

MRL EL TIGRE 52Z
 MRL PREDESTINED 63B
 TSN MS EDITION 55W
MRL PRISM 31D
 IPU RED WESTERN 49X
 MRL MISS 2368Z
 MRL MISS 470U
 MRL EL TIGRE 52Z
 MRL PRETTY RECKLESS 68B
 MRL MISS 310X
MRL MISS 6734D
 HOOKS SHEAR FORCE 38K
 MRL MISS 493U
 MRL MISS 952S

CE	BW	WW	YW	MCE	MWW	MILK
3.8	5.1	83.6	115.7	1	66.7	24.9
API	108.94	TI	70.67			

Bred April 12 to State of War. PE to R Plus Focus May 7 - June 10.

Her dam is an awesome Reckless daughter out of the 493U donor cow. Dam of MRL 91Y Destination and grandam to MRL Missile.

16 Jan 2019 : BPG1272371 : Pld PB

43 MRL MISS 9437G

BW: 90 lbs WW: 846 lbs

DCR MR MOON SHINE X102
 TNT BOOTLEGGER Z268
 TNT MISS W70
MRL CAPONE 130B
 MRL BLACK BEAR 79S
 MRL MISS 836W
 MRL MISS 828S
 REMINGTON ON TARGET 2S
 LFE BISS BLACKADVANCE 426U
 LFE BILLY 80M
ACS KAHLUA 204Z
 KENCO/MF POWERLINE 204L
 J ANCHOR MISS POWERLN 20U
 J ANCHOR SPADE 18P

CE	BW	WW	YW	MCE	MWW	MILK
5.3	3.7	73.1	110.7	1.1	59.9	23.3
API	109.46	TI	67.79			

Bred April 2 to MRL Bender 25F. PE to R Plus Focus May 7 - June 10.

A black Capone heifer here out of the dandy ACS Kahlua female we purchased at the Agribition sale. She raised a \$9500 bull in our 2016 sale to Speargrass Land & Cattle and a top open heifer in our 2017 sale to NA Bar Land & Cattle. Pretty neat proven pedigree here and bred early to MRL Bender. Totally exclusive genetics and a sire we're really high on.

3 Feb 2019 : BPG1273236 : Pld PB

BLACK SIMMENTAL BRED HEIFERS

44 MRL MISS 9542G

BW: 86 lbs WW: 734 lbs

WFL ABSOLUTE 51Y
R PLUS 5015C
IPU MS. 56U LINER 15A
R PLUS FOCUS 7041E
R PLUS HARD ROCK 145X
MISS R PLUS 5102C
MISS R PLUS 8094U
DCR MR MOON SHINE X102
TNT BOOTLEGGGER Z268
TNT MISS W70
MRL MISS 4442B
SRS FORTUNE 500
MRL MISS 642Y
MRL MISS 290M

CE	BW	WW	YW	MCE	MWW	MILK
8.8	1.8	66.7	100.8	4.1	56	22.6
API	117.62	TI	67.3			

Bred April 12 to State of War. PE to Red Circle G Guardian
41G May 7 - June 10.

We have some really good black blaze heifers on offer this year and this is one of them. Sired by the high selling 5015C son Focus and out of a productive Bootlegger daughter that ahs had top females the past 3 sales to LA Ranch, BC, TSN Livestock, MB, and last year to Goudy Prairie Acres. A blaze face State of War calf will be exciting.



21 Jan 2019 : BPTG1276622 : Homo Pld PB

45 MRL MISS 9470G

BW: 94 lbs WW: 882 lbs

TNT TOP GUN R244
LFE VIPER 455U
LFE CHARO 56K
NCB COBRA 47Y
CNS DREAM ON L186
NCB MISS DREAM 22T
NUG SANDY 506R
TNT DYNAMITE BLACK L137
TH BLACK EDITION 8R
BBN MS BLACK LADY 28H
TSN MS EDITION 55W
LFE RED HEMI 391N
MRL MISS 899S
MRL MISS 541N

CE	BW	WW	YW	MCE	MWW	MILK
10.2	3	81.5	119.4	9.8	69.6	28.8
API	124.05	TI	73.36			

Bred April 15 to State of War. PE to R Plus Focus May 7 - June 10.

An embryo heifer here that may be the sleeper in the whole deal. Any time you get the opportunity to buy a daughter of the 55W donor cow, just do it. I could fill this entire page on her accomplishments as she has earned her spot as the highest revenue single cow in MRL history. Homo polled.



3 Jan 2019 : BPG1273250 : Homo Pld PB

46 MRL MISS 9402G

BW: 59 lbs WW: 754 lbs

WFL ABSOLUTE 51Y
R PLUS 5015C
IPU MS. 56U LINER 15A
R PLUS FOCUS 7041E
R PLUS HARD ROCK 145X
MISS R PLUS 5102C
MISS R PLUS 8094U
LFE RICH RAY 369Z
LFE BS LEWIS 420B
LFE HEAVEN SENT 30X
MRL MISS 7466E
WHEATLAND PREDATOR 922W
MRL MISS 601Y
REMINGTON WISE GIRL 235U

CE	BW	WW	YW	MCE	MWW	MILK
6.3	2.5	81.1	128.6	1.8	64.2	23.6
API	114.77	TI	72.28			

Bred April 9 to State of War. PE to Red Circle G Guardian
41G May 7 - June 10.

An eye catcher here sired by the calving ease Focus bull and back to our Remington Wise girl cow family on the bottom side that raised the high selling \$69,000 MRL Playmaker bull in last years bull sale to Bouchard Livestock. Some pretty elite donor cows once again in this pedigree including the IPU 56Y Liner 15A and LFE Heaven Sent 30X. Homo polled.

19 Jan 2019 : BPG1273226 : Pld PB

47 MRL MISS 9456G

BW: 85 lbs WW: 768 lbs

WFL ABSOLUTE 51Y
R PLUS 5015C
IPU MS. 56U LINER 15A
R PLUS FOCUS 7041E
R PLUS HARD ROCK 145X
MISS R PLUS 5102C
MISS R PLUS 8094U
COME AS U R RED ROCKET
MRL MISSILE 138C
MRL MISS 2423Z
MRL MISS 7371E
TH BLACK EDITION 8R
MRL MISS 369T
MRL MISS 748R

CE	BW	WW	YW	MCE	MWW	MILK
5.8	3.2	76.9	113	2	58.8	20.3
API	118.73	TI	70.4			

Bred April 4 to State of War. PE to Red Circle G Guardian
41G May 7 - June 10.

A Focus female here worth serious consideration! This is a big-time cow family and don't be surprised if you see this powerful Missile first calver in our donor pen in the near future. The grandam has raised 4 feature bulls including the \$27,000 MRL Border Patrol to Mandan Lake Simmentals, ND, MRL Thor at \$14,000 to Crocus Simmentals as well as Stangeland Simmentals, ND, and Corey Jorgenson, ND. The great grandam also a \$10,000 heifer to Erixon Simmentals and top bulls to NLC Simmentals, ND, and Hoiby Simmentals, ND. Pretty cool female here rich on pedigree and destined to be a money maker.

20 Jan 2019 : BPG1273157 : Pld PB

48 MRL MISS 9468G

BW: 85 lbs WW: 744 lbs

WFL ABSOLUTE 51Y
R PLUS 5015C
IPU MS. 56U LINER 15A
R PLUS FOCUS 7041E
R PLUS HARD ROCK 145X
MISS R PLUS 5102C
MISS R PLUS 8094U
LFE BUNDI 300X
MRL DRILLER 107Z
MRL MISS 493U/HP-HOP
MRL MISS 5350C
HTP SVF IN DEW TIME
MRL MISS 3355A
MRL MISS 612Y

CE	BW	WW	YW	MCE	MWW	MILK
10.7	1.2	68.0	99	4.7	54.9	18.3
API	129.88	TI	68.40			

Bred April 12 to State of War. PE to Red Circle G Guardian
41G May 7 - June 10.

A maternal sister was a feature open heifer in our 2017 sale going to Waydamar Farms, ON. This Focus female is backed by a dandy cow and will mature into a front end cow.

BLACK SIMMENTAL BRED HEIFERS

19 Jan 2019 : BPGI276363 : Pld PB

49 MRL MISS 9457G

BW: 88 lbs WW: 822 lbs

WHEATLAND PREDATOR 922W
MRL EL TIGRE 52Z
MRL MISS 836W

MRL 33C

TH BLACK EDITION 8R
TSN MS EDITION 55W
MRL MISS 899S

WHEATLAND BULL 680S
WHEATLAND PREDATOR 922W
WHEATLAND LADY 752 T

MRL MISS 575Y

TH BLACK EDITION 8R
MRL MISS 332T
MRL MISS 301M

CE	BW	WW	YW	MCE	MWW	MILK
6.4	2.7	68.5	99.9	1.5	54.2	19.9
API	105.84	TI	60.71			

Bred April 18 to State of War. PE to R Plus Focus May 7 - June 10.

This one stems from the cow family that put our black program on the map going back to the 301M & 302M Powerdrive donor cows. A Riddler sister in 2017 to this female was our second high seller going to Cornerstone Cattle Co. The sire 33C is the black full brother to MRL Predestined that sold for \$48,000 in 2015 bull sale to Semex & Skors. He is absolutely loaded with maternal genetics with our 836W and 55W donor cows in his pedigree. A stellar pedigree and mated to the outcross curve bender State of War sire. This heifer reminds me so much of our famous 55W donor cow and one that could have a huge impact on your breeding program.

30 Jan 2019 : BPGI273140 : Pld PB

50 MRL MISS 9522G

BW: 84 lbs WW: 938 lbs

KUNTZ MARSHALL 12Y
KUNTZ SHERIFF 8A
PEACOCK'S L'I'L NETTIE 23Y

MRL PROGRESS 152D

MRL BLACK BEAR 79S
MRL MISS 836W
MRL MISS 828S

MRL BLACK BEAR 79S
MRL WALK THE LINE 164W
IPU MS BEEF 98P

X-T GOLD DIGGER 24Y

TNT FORTUNE BUILDER P247
X-T MISS MATERNAL 47S
X-T MISS STINGER 77G

CE	BW	WW	YW	MCE	MWW	MILK
4	4.3	86.5	128.6	3.7	75.7	32.4
API	112.34	TI	73.01			

Bred April 10 to Proclamation. PE to R Plus Focus May 7 - June 10.

Another feature female with a powerful outcross pedigree. Her dam is a beautiful female we purchased out of the Agribition sale from X-T that has definitely paid her way. She has had top end bulls for Timothy Martin, ON, Oscar & Gloria Kleven, ND, Prairie Livestock and a \$10,000 son to Lee Rindell, ND, as well as our lead off and high selling open heifer in 2015 to TSN Simmentals. Early service to the exciting Proclamation sire is icing on the cake!



2 Jan 2019 : BPGI273252 : Pld PB

51 MRL MISS 9401G

BW: 70 lbs WW: 780 lbs

CNS DREAM ON L186
WS PILGRIM H182U
WS MARLA 276M

CCLT ALLIANCE 91C

MRL MISS 7484E

BB BARACK 1017T
BROOKS SHINIA 1A
BROOKS RED HOT Y17

KOP STOCKMAN 134S
MRL MISS 477U
MRL MISS 863S

CE	BW	WW	YW	MCE	MWW	MILK
9.5	3.2	77.7	105.8	4.5	64.7	25.8
API	125.87	TI	72.25			

Bred April 7 to State of War. PE to R Plus Focus May 7 - June 10.

One here I have a feeling will be a pretty good investment a year or 2 down the road. In terms of pedigree she's pretty unique and her dam is none other than a full sister to the MRL Certified bull that drew so much attention in our 2019 bull sale as the lead off bull going to Franklin Livestock. Year after year the bulls out of this cow family lead off our bull sale. Heads up here folks.

5 Jan 2019 : BPGI273253 : Pld PB

52 MRL MISS 9405G

BW: 78 lbs WW: 816 lbs

MR NLC SUPERIOR S6018
LFE BUNDI 300X
LFE DAKOTA COAL 64P

MRL DRILLER 107Z

HOOKS SHEAR FORCE 38K
MRL MISS 493U
MRL MISS 952S

MRL 67X
MRL WESTERN FORCE
MRL MISS 2543Z

MRL MISS 7432E

TH BLACK EDITION 8R
ML MISS 482X
RED ANGUS/RED ANGUS

CE	BW	WW	YW	MCE	MWW	MILK
11.3	1.1	64.5	98.6	5.6	55.3	23
API	138.82	TI	69.35			

Bred April 22 to Knighthawk. PE to R Plus Focus May 7 - June 10.

A Driller heifer here that won't be hard to find in the pen and ranks top 2% of the breed for API. Granddam has had 2 top bulls both going to Oliver Farms and a feature female to TSN Simmentals. Once again service to the LFE Knighthawk sire.

22 Feb 2019 : BPGI273137 : Pld PB

53 MRL MISS 9602G

BW: 90 lbs WW: 786 lbs

MR NLC SUPERIOR S6018
LFE BUNDI 300X
LFE DAKOTA COAL 64P

MRL DRILLER 107Z

HOOKS SHEAR FORCE 38K
MRL MISS 493U
MRL MISS 952S

MR NLC SUPERIOR S6018
LFE BUNDI 300X
LFE DAKOTA COAL 64P

MRL MISS 2331Z

MRL STORM 140T
MRL MISS 820W
DUSTY'S BLONDE BOMBHELL

CE	BW	WW	YW	MCE	MWW	MILK
8.2	3.1	74	108.6	3	59.7	22.7
API	131.54	TI	70.58			

Bred April 10 to State of War. PE to R Plus Focus May 7 - June 10.

A maternal sister was a lead off heifer in our 2017 Herdbuilder sale to Little Rainbow Ranch and a top Discovery son went to Wallcraft Farms. Once again, early service to the awesome calving ease bull State of War.

22 Jan 2019 : BPGI291678 : Pld PB

54 MRL MISS 9482G

BW: 88 lbs WW: 884 lbs

KUNTZ MARSHALL 12Y
KUNTZ SHERIFF 8A
PEACOCK'S L'I'L NETTIE 23Y

MRL PROGRESS 152D

MRL BLACK BEAR 79S
MRL MISS 836W
MRL MISS 828S

LFE BS LEWIS 322U
MRL TO THE MAX 70Z
MRL MISS 477U
MRL MISS 4388B

MRL MISS 4388B

TH BLACK EDITION 8R
MRL MISS 722W
MRL MISS 590P

CE	BW	WW	YW	MCE	MWW	MILK
5.2	4	82.5	119.8	1.2	66.4	25.1
API	113.76	TI	70.22			

Bred April 15 to MRL Bender 25F. PE to R Plus Focus May 7 - June 10.

Another feature female here. Her pedigree is stacked with our most famous donor cows and this cow family is responsible for several of our top bulls over the years. A full brother was a feature bull in 2019 sale going to Casey Claffey. Her service to MRL Bender will add our up and coming big time donor to the pedigree, Benders dam the 6823D female might be the most impressive Simmental female we have had the pleasure to own.

18 Feb 2019 : BPG1273151 : Pld PB

BLACK SIMMENTAL BRED HEIFERS

55 MRL MISS 9594G

BW: 82 lbs WW: 818 lbs

MR NLC SUPERIOR S6018
LFE BUNDI 300X
LFE DAKOTA COAL 64P

MRL DRILLER 107Z
HOOKS SHEAR FORCE 38K

MRL MISS 493U
MRL MISS 952S

HEMR SAMURAI 7S
ANCHOR D IMAX 250Y
DORA LEE ELEXIS

MRL MISS 4385B
LFE JUSTIFIED 7328X
MRL MISS 2402Z
MISS MRL 658J

CE	BW	WW	YW	MCE	MWW	MILK
11.6	1	61.5	85.5	5.4	63.3	32.5
API	129.79	TI	66.64			

Bred April 4 to Proclamation. PE to R Plus Focus May 7 - June 10.

A black blaze female here that will catch your eye! Sired by driller who is the full brother to the 2423Z donor cow best known as the dam to the \$100,000 MRL Missile bull and Fleck genetics on the bottom side. Mated early to Proclamation could be pretty neat.



10 Feb 2019 : BPG1323932 : Pld PB

56 MRL MISS 9563G

BW: 89 lbs WW: 800 lbs

MR NLC SUPERIOR S6018
LFE BUNDI 300X
LFE DAKOTA COAL 64P

MRL DRILLER 107Z
HOOKS SHEAR FORCE 38K

MRL MISS 493U
MRL MISS 952S

HEMR SAMURAI 7S
ANCHOR D IMAX 250Y
DORA LEE ELEXIS

MRL MISS 6661D
LFE JUSTIFIED 7328X
MRL MISS 4426B
MRL MISS 812W

CE	BW	WW	YW	MCE	MWW	MILK
9.6	3.1	68.8	98.1	4.6	67.5	33.1
API	127.79	TI	68.33			

Bred April 13 to State of War. PE to R Plus Focus May 7 - June 10.

A blend of superior black and fullblood genetics here with a solid EPD profile ranking top 15% for API. Her calf by State of War will boast some pretty solid numbers.



10 Feb 2019 : BPG1276521 : Pld PB

57 MRL MISS 9565G

BW: 90 lbs WW: 850 lbs

WHEATLAND PREDATOR 922W
MRL EL TIGRE 52Z
MRL MISS 836W

MRL 33C
TH BLACK EDITION 8R
TSN MS EDITION 55W
MRL MISS 899S

WS BEEF MAKER R13
IPU RED WESTERN 49X
IPU 52N POCAHONTAS 215U

MRL MISS 2470Z
ANCHOR "T" METRO 4E
MRL MISS 687W
MRL MISS 288T

CE	BW	WW	YW	MCE	MWW	MILK
6.4	4	77.3	113.1	3	65.2	26.5
API	112.95	TI	68.49			

Bred April 2 to State of War. PE to R Plus Focus May 7 - June 10.

A pedigree here that combines our 836W and 55W donor cows as well as the IPU Pocahontas 215Y donor and a shot of Fleckvieh genetics. Her dam is one of our beauty Western daughters that has a bull at Bartel Cattle Co, a feature female in 2018 going to Outlaw Cattle Co. and another sister in our herd. Might be a sleeper here and one that could be pretty profitable.

22 Jan 2019 : BPG1273190 : Pld PB

58 MRL MISS 9477G

BW: 95 lbs WW: 828 lbs

WHEATLAND PREDATOR 922W
MRL EL TIGRE 52Z
MRL MISS 836W

MRL 33C
TH BLACK EDITION 8R
TSN MS EDITION 55W
MRL MISS 899S

TNT DYNAMITE BLACK L137
TH BLACK EDITION 8R
BBN MS BLACK LADY 28H

MRL MISS 447X
TNT KNOCK OUT R206
MRL MISS 465U
MRL MISS 339M

CE	BW	WW	YW	MCE	MWW	MILK
5	4.2	74.4	111.6	2.3	56.5	19.3
API	100.74	TI	60.95			

Bred April 17 to MRL Bender 25F. PE to R Plus Focus May 7 - June 10.

Don't miss this one. Sired by the impressive MRL 33C sire (full brother to \$48,000 MRL Predestined) and out of one of our most impressive Black Edition daughters ever (she is a flat out tank of a cow). She has raised 2 herd bulls; a lead off 420B son in 2018 going to Andy Shewchuk and her first son MRL Virtue we kept for ourselves and we have never parted with a daughter. Opportunity knocks in 2020.

9 Feb 2019 : BPG1273200 : Pld PB

59 MRL MISS 9562G

BW: 93 lbs WW: 852 lbs

WHEATLAND PREDATOR 922W
MRL EL TIGRE 52Z
MRL MISS 836W

MRL 33C
TH BLACK EDITION 8R
TSN MS EDITION 55W
MRL MISS 899S

TNT DYNAMITE BLACK L137
MRL HURRICANE 27R
MRL MISS 443N

MRL MISS 794W
MRL 4L
MRL MISS 518N
JAV MS DAYTIME 24F

CE	BW	WW	YW	MCE	MWW	MILK
4.1	4.6	80.6	119	3.6	65.9	25.6
API	106.36	TI	66.1			

Bred April 12 to MRL Bender 25F. PE to R Plus Focus May 7 - June 10.

The old 794W cow has been stellar over the years with feature herdbulls going to Glen Aldentaler and Ralph Bucholz in North Dakota and a feature Capone son in 2019 to RS Strutt. A cow family here that has stood the test of time. These are the kind that just quietly pay the bills.

January 24 2019 : 2081195 : MRLA 9488G

60 RED MRLA MISS 9488G

BW: 81 lbs Adj 205 Wt: 520 lbs

- RED U-2 RECKONING 149A
- RED U-2 REVERENCE 198C
- RED U-2 LAKOTA 427Y
- RED U2 RETROSPECT 29E**
- RED U-2 AUTHENTIC 139A
- RED U-2 ANEXA 226C
- RED U-2 ANEXA 21Y
- RED BRYLOR SDL PASQUALE 213P
- RED MRLA ECONOMY 810
- RED PFRA MS LAKOTA 105K
- RED MRLA MISS 360X**
- RED MRLA 108R
- RED MRLA 487U
- RED GARA LASSIE 148S

BW	WW	YW	MLK	CE	MCE
0	24	43	20	4	6

Bred April 3 & April 25 to Redemption. PE to Red Circle G Guardian 41G May 7 - June 10.

Take advantage here fellas. We have sacrificed one and one only Retrospect daughter to highlight our offering for 2020. This may never happen again as the Retrospect bull is deceased with very little semen in the tank. What a find this bull has been- the ideal Angus calving ease and maternal herdbull who hit it out of the park with its first calf crop siring the phenomenal \$130,000 lead off bull last spring MRL Respect that drew so much attention both sides of the 49th. ON the dams side is a beauty Economy daughter with 2 bulls going to U of S Goodale Farms & Crazy K Angus, one bred heifer to Sunberry Valley Ranch's progressive herd and the last 3 daughters stacked back in our herd. Exclusive genetics and a rare opportunity here.



February 27 2019 : 2078847 : MRLA 9608G

61 RED MRLA MISS 9608G

BW: 78 lbs Adj 205 Wt: 688 lbs

- RED RMJ REDMAN 1T
- RED LAZY MC FORUM 223Y
- RED LAZY MC BESS 12S
- RED MRLA 26D**
- RED MRLA 61X
- RED MRLA MISS 4327B
- RED MRLA MISS 2391Z
- RED LAZY MC CC DETOUR 2W
- RED MRLA TILT 80Z
- RED MRLA MISS 678W
- RED MRLA MISS 4355B**
- RED MRLA 1S
- RED MRLA MISS 384X
- RED GARA DUCHESS 123R

BW	WW	YW	MLK	CE	MCE
-1.5	36	58	31	8	7

Bred April 14 to Retrospect. PE to Red Circle G Guardian 41G May 7 - June 10.

This stout, super easy keeping female is just oozing with Angus character. Her sire, the 26D bull is one of those bulls you didn't realize what you had until its too late as we lost him with no semen inventory. The females are flat out awesome and bulls have been outstanding easy to sell, calving ease sires with tons of shape and character. On the bottom side, none other than a Tilt daughter which you have heard me rave about if you have followed our program at all. Outstanding pedigree here and bred Retrospect! Could be the next great calving ease bull in this one.



April 18 2019 : 2129152 : MRLA 9624G

62 RED MRLA MISS 9624G

BW: 90 lbs Adj WW: 738 lbs

- RITO 707 OF IDEAL 3407
- S A V RESOURCE 1441
- S A V BLACKCAP MAY 4136
- MRLA 83D**
- RED FINE LINE MULBERRY
- RED MRLA MISS 486U
- RED GARA QUEEN 32N
- RED CHOPPER K RESURRECTION
- RED MRLA 108R
- RED GET-A-LONG SHAWNEE 308
- RED MRLA MISS 2563Z**
- RED SSS HIGH MARK 272D
- RED MRLA MISS 252T
- RED GET-A-LONG CARMELLA

BW	WW	YW	MLK	CE	MCE
2.6	60	102	20	-3	3

Bred April 17 to Retrospect. PE to Red Circle G Guardian 41G May 7 - June 10.

Take note this is just a mid April born heifer that was big and powerful enough at breeding time to fit in this group. The first of the MRL 83D progeny to sell. This SAV Resource x Mulberry herdbull here at MRL is one you will be hearing a lot from in the near future. The mating to the U2 Retrospect bull will be a perfect fit here.

Feb. 1 2019 : 2124030 : MRLA 9535G

63 RED MRLA MISS 9535G

BW: 50 lbs Adj WW: 589 lbs

- RED BECKTON NEBULA PP707
- RED BROWN JY REDEMPTION
- RED JY MS JOLENE W16
- RED RUST REDEEM 201C**
- RED LCC CHEYENNE B221L
- RED TNTS MISS S139
- RED MUSHRUSH DIVINE LT
- RED PIE GAME ON 9109
- RED SSS BREAK OUT 114Y
- RED SSS DUCHESS 23R
- RED COCKBURN DREAM 711E**
- RED BAR-E-L RIBEYE 103R
- RED COCKBURN DREAM 506X
- RED COCKBURN DREAM 50F

BW	WW	YW	MLK	CE	MCE
-3.4	39	62	21	13	13

Bred April 18 to Retrospect. PE to Red Circle G Guardian 41G May 7 - June 10.

You will want to have a look at this one sale day or before hand. A Rust Redeem out of a beauty SSS Breakout daughter we purchased from Cockburn Angus. Outstanding numbers here and once again the rare service to the incredible U2 Retrospect bull whose semen is almost gone. The resulting calf will boast a pretty interesting outcross pedigree and big time numbers.

Jan. 18 2019 : 2128732 : MRLA 9453G

64 RED MRLA MISS 9453G

BW: 80 lbs Adj WW: 528 lbs

- S A V RESOURCE 1441
- MRLA RELOAD 56C
- RED MRLA MISS 641Y
- RED MRLA RESOURCE 137E**
- S A V HARVESTOR 0338
- MRLA MISS 4422B
- MRLA MISS 433T
- S A V FINAL ANSWER 0035
- MRLA FINAL ANSWER 43B
- RED MRLA MISS 461X
- MRLA MISS 6759D**
- RED BROWN JY REDEMPTION
- RED MRLA MISS 4303B
- RED MRLA MISS 2343Z

BW	WW	YW	MLK	CE	MCE
0.2	37	74	22	6.5	8.5

Bred April 12 to Retrospect. PE to Red Circle G Guardian 41G May 7 - June 10.

Opportunity strikes twice here with this twin sister to 9452G Lot 67. Same cool pedigree, same service.

Jan. 30 2019 : 2078846 : MRLA 9520G

65 RED MRLA MISS 9520G

BW: 74 lbs Adj WW: 594 lbs.

- RED RMJ REDMAN 1T
- RED LAZY MC FORUM 223Y
- RED MRLA 26D**
- RED MRLA 61X
- RED MRLA MISS 4327B
- RED MRLA MISS 2391Z
- RED CHOPPER K RESURRECTION
- RED MRLA 108R
- RED GET-A-LONG SHAWNEE
- RED MRLA MISS 693W**
- RED BUF CRK DYNAMICS
- RED GARA EUGENIE 63P
- GARA EUGENIE 27M

BW	WW	YW	MLK	CE	MCE
-2	29	50	21	8	7

Bred April 15 to Retrospect. PE to Red Circle G Guardian 41G May 7 - June 10.

Another easy keeping 26D daughter here with a calving ease highly maternal pedigree back to one of our really productive cow families. The early service to the U2 Retrospect bull is worth its weight in gold.

February 01 2019 : 2078849 : MRLA 9534G

ANGUS BRED HEIFERS

66 RED MRLA MISS 9534G

BW: 80 lbs Adj 205 Wt: 630 lbs

S A V RESOURCE 1441
MRLA RELOAD 56C
RED MRLA MISS 641Y
RED MRLA RESOURCE 137E
S A V HARVESTOR 0338
MRLA MISS 4422B
MRLA MISS 433T

S A V NET WORTH 4200
MRLA 53W
RED BROX MS CHEROKEE 13N
MRLA MISS 5371C
RED RINGSTEAD DAWSON 209R
RED MRLA MISS 803R
RED MRLA MISS 845S

BW	WW	YW	MLK	CE	MCE
3	42	82	24	0	6

PE to Red Circle G Guardian 41G May 7 - June 10.

Just when you thought it couldn't get any better, have a look here. Again, a powerful Red Resource daughter out of a black red carrier Net Worth granddaughter. The grandam 803R is also the grandam to the \$130,000 MRL Respect bull that sold last spring and great grandam is the old 845S matron who is the dam of the MRLA New Era bull that was Denver Reserve Champion bull and did a great job for the Six Mile Red Angus program. Breed legends SAV Resource, SAV Harvester, SAV Network and big-time high value cow family here. Donor material here. Bred to the exciting outcross 9 Mile Franchise son we acquired from Circle G this spring, could be exciting.



January 18 2019 : 2078853 : MRLA 9452G

67 RED MRLA MISS 9452G

BW: 85 lbs Adj 205 Wt: 618 lbs

S A V RESOURCE 1441
MRLA RELOAD 56C
RED MRLA MISS 641Y
RED MRLA RESOURCE 137E
S A V HARVESTOR 0338
MRLA MISS 4422B
MRLA MISS 433T

S A V FINAL ANSWER 0035
MRLA FINAL ANSWER 43B
RED MRLA MISS 461X
MRLA MISS 6759D
RED BROWN JYJ REDEMPTION Y1334
RED MRLA MISS 4303B
RED MRLA MISS 2343Z

BW	WW	YW	MLK	CE	MCE
0.2	37	74	22	6.5	8.5

Bred April 4 to Retrospect. PE to Red Circle G Guardian 41G May 7 - June 10.

Check out the pedigree sired by the outcross and phenomenal breeding piece MRLA Resource sire that garnered a ton of attention last spring with his first set of bulls not only here at MRL but a \$130,000 son at U2 and \$90,000 herd bull for SSS Angus just to name a couple. On the bottom side is a beautiful young SAV Final Answer granddaughter. The service to the incredible U2 Retrospect bull will be the ideal mating on these Red Resource daughters. I'd be hoping for a bull calf with this kind of pedigree, could be the jackpot.



January 18 2019 : 2078844 : MRLA 9447G

68 RED MRLA MISS 9447G

BW: 98 lbs Adj 205 Wt: 608 lbs

S A V RESOURCE 1441
MRLA RELOAD 56C
RED MRLA MISS 641Y
RED MRLA RESOURCE 137E
S A V HARVESTOR 0338
MRLA MISS 4422B
MRLA MISS 433T

RED LAZY MC CC DETOUR 2W
RED MRLA TILT 80Z
RED MRLA MISS 678W
RED MRLA MISS 4371B
RED SOO LINE MOMENTUM 7051
RED MRLA MISS 345X
RED MRLA MISS 269T

BW	WW	YW	MLK	CE	MCE
4.9	33	66	27	-6	2

Bred April 14 to Retrospect. PE to Red Circle G Guardian 41G May 7 - June 10.

An average pic here of probably the most powerful female in the offering. Once again sired by the \$90,000 MRLA Resource sire and out of an absolute beautiful Tilt daughter that has been a herd bull producer and just getting started. Her first bull going to Scott Stock Farms top Angus operation in Alberta and her second was the popular paternal brother to Resource himself in our 2018 bull sale MRLA Upload, a \$20,000 herdsire selected by the powerful Angus program of Ter-Ron Farms. The Upload progeny have been popular for Ter-Ron and Six Mile Red Angus this past year. The grandam also raised the feature black red carrier MRLA 23F bull in our 2019 sale going to the elite breeding program of Fraser Angus and Brylor Ranch. I could go on all day of the potential of this one. She will be well worth the drive to see in person and a potential donor female here. Once again, bred Retrospect. Talk about a quick ROI.



Around The Ranch



MRL 27th Annual Bull Sale

SATURDAY, MARCH 6, 2021

March 2021						
Sunday	Monday	Tuesday	Wednesday	Thursday	Friday	Saturday
	1	2	3	4	5	6
7	8	9	10	11	12	13
14	15	16	17	18	19	20
21	22	23	24	25	26	27
28	29	30	31			

Featuring Sons of.....

- | | | |
|---------------|-------------------|-------------------|
| MRL Missille | MRL Statement | R Plus Focus |
| MRL Certified | SVS Tycoon | WS Proclamation |
| MRL Bender | BBS Load 'M Up | MRLA Red Resource |
| IPU Bentley | Rust 18C | U2 Retrospect |
| LFE Riddler | Hart State of War | MRLA 83D |

MARK YOUR CALENDAR

180 BEEF BULLS

Red & Black Simmental
Red & Black Angus

HOW TO PARTICIPATE IN THE DLMS FARM GATE TIMED AUCTION WITH EXTENDED BIDDING:



Thursday, December 10 - 9 AM CST - bidding begins

Friday, December 11 - 7 PM CST - auction closes farmgate style

1. Visit <https://farmgatetimedauctions.ca>, click the LOGIN/REGISTRATION button. First time users will select the REGISTER button from this page. Fill out the registration form to sign up for a free user account and it allows you to select a user name and password for use on all Farm Gate Timed auctions. This program will send you text and email messages whenever there is activity on your favorite lots or someone challenges your proxy bid and this is why you will be asked for both your current email and cell phone number. If you are a past participant in the Farm Gate Timed auctions simply enter your user name and password to continue. This takes you to a list of both current and upcoming Farm Gate Auctions.
2. You can choose your favorite lots in this sale at this time and the program will allow you to open either all sale lots or just your favorite lots on your screen. Anytime there is active bidding on a lot you have identified on your favorite list you will get a text and/or an email noting this activity.
3. The program allows you to place a proxy bid on any sale lot. This in fact protects your interest in any lot of interest for you to a specified dollar value you set, when you may not be able to give 100% attention to the sale. If the lot has a \$2000 bid on it and you place a proxy bid of \$3500 into the system, the computer will bid \$2100 for you but if someone else bids \$2200, the computer will again bid for you, this time at \$2300. The system will look after your interest to a maximum of \$3500. If another bidder is on at \$3600, your proxy will no longer be effective and you will not longer have the winning bid on this lot without once again logging in and bidding again or moving your attention to a second lot of interest.
4. At closing time of the sale the entire sale will extend bidding for 5 minutes if a bid is placed on any lot in the sale. Any bid received after 7 PM CST will extend the sale by 5 minutes from the time of that bid. When no bidding occurs for 5 min the computer will declare the sale finished.
5. Within 24 hours of the sale close the Sale Manager, Bohrson Marketing Services will contact all winning bidders to arrange payment, transfer of pedigrees and deliver/pickup of your lot.

If you require assistance with using the DLMS Farm Gate website, if you don't understand how to create a favorites list, if you can't figure out the proxy bid or you just plain want to bid via phone, please talk to any of the DLMS team, sales management, or MRL personnel.

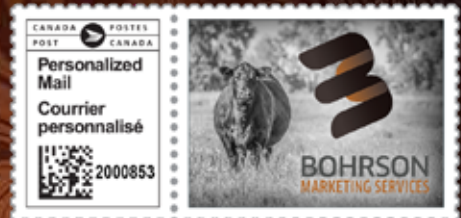
WHAT IS RACEHORSE STYLE SALE CLOSE? Racehorse style sale close is when the entire sale stays open in extended bidding. This type of sale allows you as the bidder to change to a different lot within the same sale if the bidding has gone into extended bidding.

HOW WILL EXTENDED BIDDING WORK? When we get to the close out end time the clock for close extends with any bid placed with less than 5 min on the clock. This type of extended bidding turns the end time to more of a soft time. Extended bidding allows bidders to compete in lots like a real auction and gives all bidders the same time to make a decision. Always follow the clock to see how much time remains in the sale you are interested in.

If you require assistance with the Racehorse auction process or bidding via phone talk to any of the DLMS team, sale management, or MRL personnel and we can help you in purchasing the lot you are interested in.

DLMS - Mark Shologan - 780.699.5082 or DLMS - Whitney Bosovich - 780.991.3025

PLEASE RETURN UNDELIVERABLE CATALOGS TO:
MCMILLEN RANCHING LTD.
Box 99
CARIEVALE, SK
SOC OPO



RETURN POSTAGE GUARANTEED
PORT DE RETOUR GARANTI

Time Sensitive Material

Thank You to our 2019 buyers!!!

MRL

HERDBUILDER 20

FALL FEMALE PRODUCTION SALE

LAWN VIEW SIMMENTALS, MB
GOUDY PRAIRIE ACRES, SK*
JUNIOR'S CATTLE SERVICE, SK
NATHANIAL HAMAN, ND
CANADIAN DONORS, AB*
CIRCLE M FARMS, MB*
SWEET GRASS RANCH, MB*
WILSON STOCK FARMS, AB*
RED TOP LIVESTOCK, AB*
CIRCLE 7, SK*
SWAN LAKE SIMMENTALS, SK*
COME AS U R SIMMENTALS, SK*
L & L SIMMENTAL, SK*
SANDS SIMMENTAL, SK
ARROW CREEK SIMMENTAL, MB*
MAXWELL SIMMENTAL, AB*
BROCK HAMAN, ND
STONEY CREEK SIMMENTAL, SK*
VELIAN FARMS, ON
ASHWORTH FARM & RANCH, SK*
DOWNHILL SIMMENTAL, MB*
JPR FARMS, AB
BRUECKNER EALES SIMMENTAL, ND*
CLAY EKSTRUM, ND*
MILLINGTON RANCH, SK*
CALEDONIA SIMMENTAL, MB

BIG VALLEY FARMS, MB*
KASH SIMMENTAL, SK*
KAELBERER SIMMENTALS, ND*
BOB HULL, SK*
FAR L FARMS, ON*
JAEDON HAMAN, ND
SECTION 17, SK
RJS AG, SK*
U-2 RANCH, AB*
BOUCHARD LIVESTOCK, AB*
KOREY JORGENSEN, ND*
KEN RAY RANCH, SK*
TSN LIVESTOCK, MB*
HADWIN CATTLE CO., AB
BOYD MULLIN, AB*
LITTLE RAINBOW RANCH, SK*
GARY TILBURY, MB*
CITY VIEW SIMMENTALS, SK*
CODY ANDERSON, SK*
GORD GERARD, SK*
MARCEL BOURGEOIS, SK*
COREY FITZPATRICK, SK
JOHN MCCANNELL, MB*
KELLY FITZPATRICK, SK
TIM MCCANNELL, MB*

VOLUME BUYER: CITY VIEW SIMMENTALS

