

GENETICS

# MRL

## HERDBUILDER 21

---

### FALL FEMALE PRODUCTION SALE

---

December 10, 2021  
Online Auction  
Bidding: December 9 - 10  
Closing at 6 PM CST December 10



*Genetics designed by Ranchers for Ranchers*

On behalf of everyone at MRL, welcome to our 2021 edition of the Herdbuilders Fall Female Sale. I led into last year's welcome with "Well 2020 has been quite a year". I'm afraid 2021 has also seen the challenges with lingering Covid restrictions, and one of the widest spread drought situations in the history of Western Canada. Despite all of this, commodity prices are at record highs and the cattle markets remain strong in an early fall run. This cattle industry is gonna get really good boys a year or two down the road, be sure to put yourself in a position to take advantage with the numbers and quality in your herds.

When selecting for our 2021 lineup of females this year, we certainly took into account the situation at hand. With many areas of the prairies marginal on feed supplies, we realize in years like this if you want to add a bred heifer or two it's got to have the potential to make a positive impact in your herd. For 2021 we have dug deeper than we ever have before offering more of those gotta own type females. We have kept our numbers in the purebred early calving division down slightly and quality way up. Breed leading genetics and service to the most exciting calving ease bulls in the business. Each and every female in the offering has potential to cover and in some cases double or tripe your investment only a year down the road. As for the commercial heifers on offer, they are once again all home raised and a powerful group. They are the sisters to our coming 2 Year Old bulls for this coming spring and the heifer calves born in our spring calving herd.

Once again they were AI bred to industry leading Angus calving ease sires and exposed to an elite MRLA 83D son we kept for use here at MRL. They will start calving the beginning of March with a tight calving interval according to the ultrasound. As usual they will be paired in twos according to type and breeding info and will match up like peas in a pod.

For 2021 these powerful females will once again be offered for sale through a timed auction format, the same as we did last year. With Covid restrictions looming and the total destruction of our sale barn this spring by fire, this just seemed to be the route to take this fall. The construction of our new sale barn is coming along nicely and will certainly be ready for a live sale March 5th for the bull sale. The sale however December 10 will be online bidding through DLMS Farmgate Auction with closeout at 6:00 pm that evening. Having said that, the heifers are available for live viewing anytime from now until sale time at your convenience and will be penned at the sale barn December 9th and 10th with lunch and refreshments. If you would like to be in attendance for the closing live at the ranch sale day by all means you are welcome. For any questions on internet bidding, call us here at MRL or Mark at DLMS or if you would like to be on a phone at closeout, contact Lee or Dave.

Most of us have become accustomed to this internet bidding but as I say if you would like to be here in person, on a phone or take advantage of our sight unseen program or order buyer's expertise, we want to make it as easy as we can for you to participate. If bidding on multiple lots or just too darn busy to watch the computer for a couple hours that evening my personal experience is to take advantage of the proxy bid option and just let the computer in Edmonton do the work.

As in the past we rely on over 50 years in the business of providing elite seedstock to our customers with an honest old fashion approach. The quality of our offering for 2021 will be the same as it always has been! Over 50 years of stacking and multiplying elite cow families that rise to the top through production merit under our real-world ranch conditions. With 800 registered breeding females and limited manpower the cow families that work soon rise to the top. Over the years we have marketed thousands of breeding bulls and replacement females to literally hundreds of fellow breeders and commercial cattle operations. The majority have turned into many time repeat customers and more importantly, friends. The production of our offering is 100% hands on and our marketing strategy is based on an honest approach and cattle that are profitable for their new owners. This is what keeps the cowboys coming back year after year. We won't overwhelm with fancy fitting, pictures, marketing schemes or pester you with phone calls. It's simple, elite genetics presented in their working clothes and an old fashioned hand shake guarantee.

Once again, the heifers are available for viewing anytime, will be penned December 9th and 10th by the sale barn and videos will be on DLMS Farmgate at least a week prior to sale day. As always, feel free to give us a call to discuss the offering. This really is a must see group for 2021.

Working for and with you in the livestock industry.

The Entire MRL Crew



## SALE DAY PHONES

LEE McMILLEN - 306.483.8067  
DAVE McMILLEN - 306.483.8660  
JIM McMILLEN - 306.483.7986  
BRIAN BOUCHARD - 403.813.7999  
DARNELL FORNWALD - 403.795.8030

MRL SALE BARN  
306.928.2011  
306.928.4820

SCOTT BOHRSON - 403.370.3010  
TAYLOR RICHARDS - 306.821.4169  
ROB VOICE - 306.270.6082  
CODY HANEY - 403.845.8806  
JAY SIBBALD - 403.899.2625

MRL

Welcome to McMillen Ranching Ltd.

McMILLEN RANCHING LTD. | McMILLEN RANCHING LTD. | McMILLEN RANCHING LTD. | McMILLEN RANCHING LTD.

# MRL

## HERDBUILDER 21

### FALL FEMALE PRODUCTION SALE

December 9 - 10, 2021

Online Auction closes 6 PM Dec. 10

#### Sale Day Phones

MRL Sales Barn 306.928.2011  
 Sales Barn 2nd Line 306.928.4820  
 Lee McMillen 306.483.8067  
 Jim McMillen 306.483.7986  
 Dave McMillen 306.483.8660

#### Bohrson Marketing Services

Scott Bohrson 403.370.3010  
 Taylor Richards 306.821.4169  
 Rob Voice 306.270.6082  
 Cody Haney 403.845.8806  
 Jay Sibbald 403.899.2625

#### Bouchard Livestock International

Brian Bouchard 403.813.7999

#### First Class Marketing

Darnell Fornwald 403.795.8030

#### Pour Informations en Francais - Bi-lingual Agent

Marc Boisvert 819.395.5502  
 819.314.0367

**DLMS** - Mark Shologan 780.699.5082

Internet Bidding Available

**D | L | M | S**  
 www.dlms.ca

For more information call DLMS:  
 Mark Shologan 780.699.5082 or  
 DLMS Purebred Team 780.991.3025

MRL

## OFFERING 53 LOTS

26 BLACK SIMMENTAL BRED HEIFERS

21 RED SIMMENTAL BRED HEIFERS

6 RED ANGUS BRED HEIFERS

PLUS 60 COMMERCIAL

SIMM/ANGUS BRED HEIFERS

*Catalogue and videos can  
 be viewed on our website  
 www.mrlbranch.com*

#### Terms & Conditions

Cattle sell under the standard CSA and CAA terms and conditions.

**U.S. Buyers: We welcome our U.S. Customers once again!**

Phone MRL for exchange rate. MRL will do necessary testing at cost for export on females and deliver to North Portal or Dunseith Port of Entries.

#### Delivery

MRL will assist in arranging trucking for your purchases to central points across Canada.

#### Sale Headquarters

Avonmore Hotel-Carnduff, SK 306.482.3655  
 Canalta Inn-Moosomin, SK 306.435.3034  
 Western Stars Suite, Carlyle, SK 306.452.2700  
 Perfect Inns & Suites-Estevan, SK 306.634.8585  
 Western Star Inns and Suites, Carnduff 306.482.1400

**Call MRL if you need assistance with accommodation.**

#### Insurance

Alameda Agencies, Bonnie Thompson Ph: (306) 489-2250.

**We strongly urge you to insure your purchases.**

#### Identification

All sale lots will carry a CCIA tag with lot numbers

#### Lunch & Refreshments

Served throughout the afternoon and evening of December 9 & 10.

#### Cattle Viewing

Cattle will be on display at the sale barn.

#### Catalogue Information

EPDs are current and up-to-date as of publication date. Information in this document is believed to be accurate but any updates from the auction block will take preference.

#### Catalog Design

Catalog design was done by Bohrson Marketing Services. The information in this catalog has been supplied by the seller and we believe it to be accurate. Updated supplement sheets and announcements from the block will take precedence over any printed material.

*Important Sale Information*



# BOHRSON MARKETING WELCOME

Welcome to another edition of “Herd Builder” hosted by MRL. The McMillen crew is one of the hardest working families you will ever come across and they are true cattlemen that are very knowledgeable in all aspects of the agriculture industry.

McMillen Ranching is home to one of the absolute best bull sales in the world and is home to many breed leading herd bulls that annually come out of this program and on December 10th you will have the opportunity to step into many 1/2, 3/4 and Full sib females to the bulls that have and will continue to influence the Simmental breed.

The 2021 offering is as deep and stout as ever before and whether you’re looking for a red or black Simmental or Angus, the quality will be extremely deep in Carievale. Given the drought state across the prairies this year and a shortage of feed, the MRL program has done the work for you selecting even harder on this group and are truly selling their best.

When you invest into a McMillen Ranching female, you aren’t only investing into a great breeding piece, but also into a program with 50 years of integrity, dedication and knowledge in the business.

We at Bohrson Marketing are very familiar with the MRL program and would be very happy to assist you in any way or form for their DLMS Farm Gate Timed Auction close out.

Best regards,  
The Bohrson Marketing Team

## SIGHT UNSEEN PROGRAM

For 2021 and our total online bidding format we don’t want to leave anybody out. If you have interest in any of the offering but are not comfortable with the computer or are busy at closing time of the auction by all means give us a call about our Sight Unseen Program or any of our sales staff. This program has worked very well for years at our Annual Bull Sales for busy cattle persons that are unable to make it Sale Day! Give us a call or come to the ranch prior to sale day to view the cattle. Describe to us what you’re looking for from the offering and you set the price. We will personally try and purchase the females on your behalf as if you were sitting in the stands most times for less than you have bid! As with the bulls we live with these cattle 365 days a year and know the genetic strengths of each individual in the offering. We’re here to help our customers. Give us a call anytime any day.



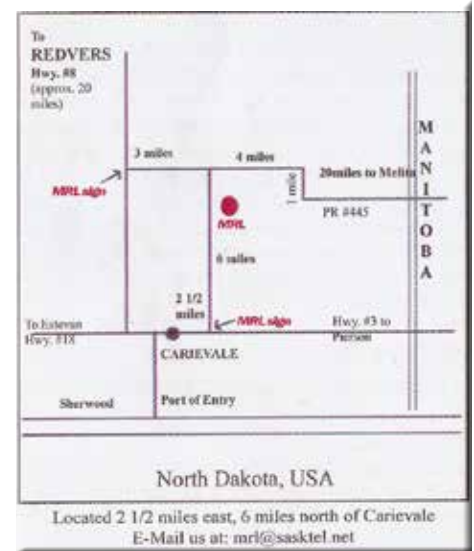
Lee McMillen  
306.483.8067  
306.928.4820



Dave McMillen  
306.483.8660



Jim McMillen  
306.483.7986  
306.928.4636





**MRL MISSILE 138C**

- High selling \$100,000 black bull in Canada in 2016
- Maybe the most exciting, consistent sire group ever at MRL
- Balanced EPD profile combining the most elite performance, maternal and calving ease in the breed
- Homo Polled; Hetro Blk



**MRL STATEMENT**

- Sire of lead off high selling bulls at MRL & Ashworths last spring
- Huge maternal merit
- Homo Polled



**MRL CERTIFIED 223E**

- Lead off bull 2019 Bull Sale
- Flawless & powerful in design
- Combination of 50W x 477U donors



**KWA FUTURE 3G**

- Outcross calving ease sire
- Cherry red
- Top of breed CE, BW, API nos.
- Homo Polled



**KWA CAN AM**

- High selling MRL Statement son in Ashworth Bull Sale 2021
- Excellent EPD profile
- Homo Polled



**RUST BULL 18C**

- High selling red bull in Rust Mountain Bull Sale
- Powerful, performance sire
- Elite ET donor dam
- Combination of performance and maternal power
- Homo Polled



**WS PROCLAMATION E202**

- Outcross black pedigree
- Big time donor dam
- Unmatched birth to weaning EPD numbers
- Homo Polled; Homo Black



**HART STATE OF WAR 056C**

- Total outcross Calving Ease Sire
- Unmatched birth to weaning spread numbers in Canada and US
- Homo Polled; Homo Black



**R PLUS FOCUS 7041E**

- Exciting outcross pedigree
- Top 20% CE, BW, API
- Very complete head to toe
- Homo Polled; Hetro Black



**U2 RETROSPECT 29E**

- Our pick of calving ease bulls U2 Bull Sale 2018
- \$24000 Sale Highlight
- Big Time calving and maternal merit
- Cool look, substance, shape and overall structured soundness



**MRLA RESOURCE 137E**

- Powerful \$90,000 bull that led off our 2018 sale
- Heifer calves at U2 dispersal highly sought after
- Outcross pedigree red genetics SAV Resource and SAV Harvester
- Powerful phenotype, great feet



**U2 38 SPECIAL**

- Exciting Lot 1 \$40,000 bull U2 Bull Sale
- Dam is phenominal \$65,000 Red U2 Beauty 113Z
- Outcross highly proven calving ease sire we are thrilled to add to our lineup.

*Reference Sires*

**1 MRL MISS 0622H**

BW: 88 lbs WW: 764 lbs

TNT TOP GUN R244  
 LFE VIPER 455U  
 LFE CHARO 56K  
**NCB COBRA 47Y**  
 CNS DREAM ON L 186  
 NCB MISS DREAM 22T  
 NUG SANDY 506R  
 R PLUS 2169M  
 KOP STOCKMAN 134S  
 KOP RED LADY 9N  
**MRL MISS 477U**  
 LCHMN BODYBUILDER 7303F  
 MRL MISS 863S  
 MISS MRL 491G

CE	BW	WW	YW	MCE	MWW	MILK
6	4.2	84.5	126.2	3.3	74.9	32.6
API	126.29	TI	76.6			

*Bred to Hart State of War 056C on April 4*

*Exposed to R Plus Focus 7041E April 30 - June 1.*

Well what a way to start the strongest and most powerful set of bred females we have ever offered for sale. An ET daughter of none other than our powerful 477U donor. She may be my most favourite cow of all time and this cow family reigns as our absolute #1 red cow family. 477U as a donor has produced top of the breed herd bulls such as To the Max, Chicago, Prince Albert, Rum Runner and Certified just to name a few. Her dam 863S and sister 470U are legendary donor cows and daughters 4424B and 8511E are currently in ET production with at least 3 more daughters that need to be a part of our donor lineup. We have only ever parted with a couple of daughters- in 2019 8475F (full sister to our 8511F donor) led off the sale to Lawnview Simmentals at \$34,000. I could go on and on. Cobra, on the top side of course, needs no introduction and is noted for his productive daughters. All in all, this is a definite donor prospect and probably the last opportunity ever to purchase a direct daughter of the legendary 477Y matron.



23 April 2020 : BPTGI349771 : Homo Pld PB

**2 MRL MISS 0720H**

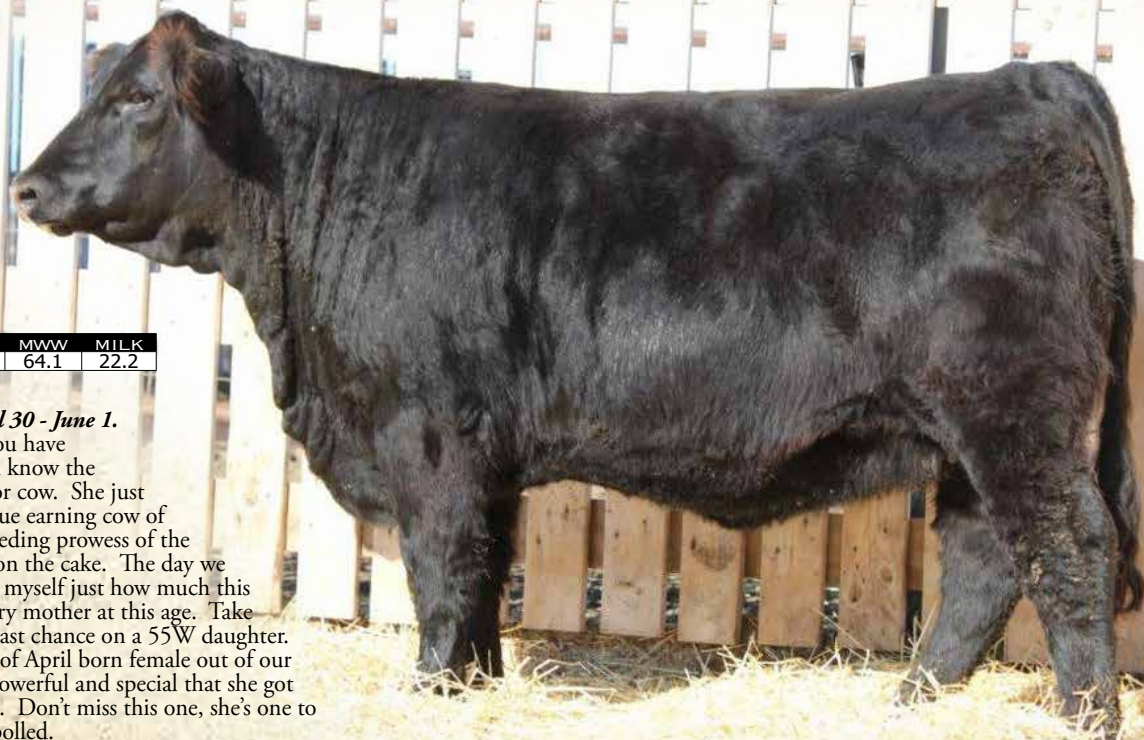
BW: 80 lbs WW: 780 lbs

MRL 130Y  
 COME AS U R RED ROCKET  
 MISS XCITING 14X  
**MRL MISSILE 138C**  
 LFE BUNDI 300X  
 MRL MISS 2423Z  
 MRL MISS 493U  
 TNT DYNAMITE BLACK L 137  
 TH BLACK EDITION 8R  
 BBN MS BLACK LADY 28H  
**TSN MS EDITION 55W**  
 LFE RED HEMI 391N  
 MRL MISS 899S  
 MRL MISS 541N

CE	BW	WW	YW	MCE	MWW	MILK
6.8	3.6	83.7	116.7	3.7	64.1	22.2
API	103.16	TI	71.83			

*Exposed to R Plus Focus 7041E April 30 - June 1.*

A definite donor prospect here! If you have followed our program at all, you will know the production record on the 55W donor cow. She just doesn't miss and is our highest revenue earning cow of all time. Combine that with the breeding prowess of the \$100,000 MRL Missile sire is icing on the cake. The day we pictured I couldn't help but think to myself just how much this young female resembled her legendary mother at this age. Take advantage folks as this may be your last chance on a 55W daughter. Note this heifer's age. She is an end of April born female out of our spring calving herd but was just so powerful and special that she got bumped into the early calving group. Don't miss this one, she's one to build a cow family around! Homo polled.



# BLACK SIMMENTAL BRED HEIFERS

7 Jan 2020 : BPG1309326 : Pld PB

## 3 MRL MISS 0515H

BW: 90 lbs WW: 870 lbs

MRL 130Y  
COME AS U R RED ROCKET  
MISS XCITING 14X  
**MRL MISSILE 138C**  
LFE BUNDI 300X  
MRL MISS 2423Z  
MRL MISS 493U

MRL INTEGRITY 76V  
MRL DISCOVERY 21A  
TSN MS EDITION 55W  
**MRL MISS 6732D**  
TNT POWER SURGE T404  
MRL MISS 663Y  
MRL MISS 633U

CE	BW	WW	YW	MCE	MWW	MILK
6.4	3.8	85.9	122.4	2.4	66.2	23.2
API	103.29	TI	73.39			

Bred to Hart State of War 056C on April 2

Exposed to R Plus Focus 7041E April 30 - June 1.

A big time powerhouse female here that will raise some herd bulls. Big time dimension and mass yet maintains that cool front end, she is a beast. This was Laine's 4-H heifer and her and her Dad's pick of almost 200 yearling heifers last spring. A real sweetheart to be around with a powerful pedigree.



14 Jan 2020 : BPG1310754 : Pld PB

## 4 MRL MISS 0543H

BW: 90 lbs WW: 754 lbs

MRL 130Y  
COME AS U R RED ROCKET  
MISS XCITING 14X  
**MRL MISSILE 138C**  
LFE BUNDI 300X  
MRL MISS 2423Z  
MRL MISS 493U

LFE RICH RAY 369Z  
LFE BS LEWIS 420B  
LFE HEAVEN SENT 30X  
**MRL MISS 7508E**  
HOOKS SHEAR FORCE 38K  
MRL MISS 610Y  
MRL MISS 762W

CE	BW	WW	YW	MCE	MWW	MILK
6.5	4.1	85.5	119.9	1.6	63.4	20.6
API	107.54	TI	73.32			

Bred to Hart State of War 056C on April 26

Exposed to R Plus Focus 7041E April 30 - June 1.

The Missile progeny always turn some heads, both in the bull pen and in the replacement pen. This group of Missile daughters for 2021 are as consistent and as powerful as we have ever offered. Pretty cool pedigree on this one and mated to State of War will be the perfect combination. The SOW sons out of Missile daughters have been the standouts in our bull pen the past 2 years. A quick ROI on this one.



1 Feb 2020 : BPG1309309 : Pld PB

## 5 MRL MISS 0616H

BW: 82 lbs WW: 784 lbs

MRL 130Y  
COME AS U R RED ROCKET  
MISS XCITING 14X  
**MRL MISSILE 138C**  
LFE BUNDI 300X  
MRL MISS 2423Z  
MRL MISS 493U

LFE BUNDI 300X  
MRL DRILLER 107Z  
MRL MISS 493U  
**MRL MISS 5350C**  
HTP SVF IN DEW TIME  
MRL MISS 3355A  
MRL MISS 612Y

CE	BW	WW	YW	MCE	MWW	MILK
9.3	2.6	87	119.3	2.8	61	17.5
API	114.96	TI	74.49			

Bred to Hart State of War 056C on April 2

Exposed to R Plus Focus 7041E April 30 - June 1.

Yet another powerful, big bodied Missile daughter and again mated to State of War. This combination is money in the bank. Her young dam has been productive with a top Focus female going to Daniel Loewen in BC last fall and a lead off open heifer in our 2017 sale to Waydama's top program in Ontario.



30 Jan 2020 : BPG1309298 : Pld PB

# BLACK SIMMENTAL BRED HEIFERS

## 6 MRL MISS 0609H

BW: 92 lbs WW: 820 lbs

WHEATLAND FINAL AFFAIR TNT POWER SURGE T404  
 WHEATLAND BENTLEY 630D MRL HAMMER 125X  
 WHEATLAND LADY 72X MRL MISS 443N  
**IPU BENTLEY 8 1F** MRL MISS 2405Z  
 MR NLC UPGRADE U8676 TH BLACK EDITION 8R  
 CLAYHILL FANCY LUCA 39A MRL MISS 426T  
 CLAYHILL FANCY PANTS 32S MRL MISS 339M

CE	BW	WW	YW	MCE	MWW	MILK
4.6	5.6	88.3	124.8	2.7	73.2	29
API	98.8	TI	73.05			

*Bred to Hart State of War 056C on April 6*  
*Exposed to R Plus Focus 7041E April 30 - June 1.*  
 A feature black female here sired by the \$90,000 IPU Bentley sire and out of one of our premiere cow families. The 2405Z cow is one of our most powerful females in the herd and goes back to the 426T and 339M donor cows. She has raised a couple of lead off high selling bulls. In 2018, the heavyweight bull in the entire pen to the Jackson's in Alberta and a feature Missile son in 2019 to long-time customer Corey Jorgeson, ND. We think the service to SOW will really work and will boost an outcross pedigree that will be a breeze to market.



26 Jan 2020 : BPG1310691 : Pld PB

## 7 MRL MISS 0601H

BW: 94 lbs WW: 838 lbs

WHEATLAND FINAL AFFAIR WHEATLAND PREDATOR 922W  
 WHEATLAND BENTLEY 630D MRL INTEGRITY 76Y  
 WHEATLAND LADY 72X MRL MISS 570U  
**IPU BENTLEY 8 1F** MRL MISS 3399A  
 MR NLC UPGRADE U8676 TH BLACK EDITION 8R  
 CLAYHILL FANCY LUCA 39A MRL MISS 476U  
 CLAYHILL FANCY PANTS 32S DUSTY-ROSE JADE 317L

CE	BW	WW	YW	MCE	MWW	MILK
5.3	5.4	92.9	136.2	2.2	71.4	24.9
API	100.48	TI	75.51			

*Bred to WS Proclamation E202 on April 5*  
*Exposed to R Plus Focus 7041E April 30 - June 1.*  
 Power in the pedigree here once again by Bentley and out of a cow family that can get it done. We have 2 elite Missile sired sisters in production here at MRL and the grandam 476U is one of our most elite Black Edition daughters that led the \$42,000 MRL Matrix bull in 2015 to Tri K Simmentals top breeding program in Alberta and MRL Stinger, a \$14,000 feature bull in 2019 to Hoiby Simmentals, ND.



12 Jan 2020 : BPG1310757 : Pld PB

## 8 MRL MISS 0536H

BW: 104 lbs WW: 766 lbs

MRL 130Y TNT GUNNER N208  
 COME AS U R RED ROCKET TNT POWER SURGE T404  
 MISS XCITING 14X GSR MS JOKER 113L  
**MRL MISSILE 138C** MRL MISS 495X  
 LFE BUNDI 300X BROOKS ABOVE PAR  
 MRL MISS 2423Z MRL MISS 352T  
 MRL MISS 493U MRL MISS 302M

CE	BW	WW	YW	MCE	MWW	MILK
4.5	5.8	83.6	116.6	-0.5	60	18.2
API	96.11	TI	66.44			

*Exposed to R Plus Focus 7041E April 30 - June 1.*  
 This group of Missile daughters are a powerful group, don't overlook this one because we didn't get her picture in the book. She ahs as much potential as any in the offering. Her powerful Power Surge dam raised a feature \$15,000 Riddler son to Little Rainbow Ranch in 2018 and a lead off female that featured in our 2017 female sale to Jean-Francois Leblond in Quebec. This Missile x Power Surge combination has been electric.

21 Jan 2020 : BPG1310694 : Pld PB

## 9 MRL MISS 0581H

BW: 90 lbs WW: 740 lbs

WHEATLAND FINAL AFFAIR WS BEEF MAKER R13  
 WHEATLAND BENTLEY 630D IPU RED WESTERN 49X  
 WHEATLAND LADY 72X IPU 52N POCAHONTAS 215U  
**IPU BENTLEY 8 1F** MRL MISS 5352C  
 MR NLC UPGRADE U8676 LFE BUNDI 300X  
 CLAYHILL FANCY LUCA 39A MRL MISS 3349A  
 CLAYHILL FANCY PANTS 32S IPU MS BEEF 98P

CE	BW	WW	YW	MCE	MWW	MILK
6.4	4.2	82.5	118.7	2.8	64.1	22.8
API	110.02	TI	72.99			

*Bred to Hart State of War 056C on March 31*  
*Exposed to R Plus Focus 7041E April 30 - June 1.*  
 Bentley x Red Western and back to the IPU MS Beef 98P donor cow and bred early to State of War. Boys this will work.

9 Jan 2020 : BPG1310719 : Pld PB

## 10 MRL MISS 0523H

BW: 90 lbs WW: 674 lbs

LFE THE DARK NIGHT 350U  
 LFE GOTHAM 819Y  
 LFE BEST LADY 47W  
**LFE THE RIDDLER 323B** TNT BOOTLEGGER Z268  
 TNT TANKER U263 MRL CAPONE 130B  
 LFE BS CHARO 23Y MRL MISS 836W  
 LFE CHARO 3N **MRL MISS 7443E**  
 TNT POWER SURGE T404

CE	BW	WW	YW	MCE	MWW	MILK
5.4	4.3	87.3	136.2	5.4	61.6	17.9
API	121.88	TI	78.71			

*Exposed to R Plus Focus 7041E April 30 - June 1.*  
 Talk about a stacked pedigree, Riddler, Capone, Power Surge, highly proven breed leading sires and cow families top and bottom on her pedigree. No guesswork here and one you will want to find in the pen.



16 Jan 2020 : BPG1311056 : Pld PB

# BLACK SIMMENTAL BRED HEIFERS

## 11 MRL MISS 0555H

BW: 95 lbs WW: 808 lbs

LFE THE DARK NIGHT 350U  
 LFE GOTHAM 819Y  
 LFE BEST LADY 47W  
**LFE THE RIDDLER 323B**  
 TNT TANKER U263  
 LFE BS CHARO 23Y  
 LFE CHARO 3N  
 WHEATLAND BULL 680S  
 WHEATLAND PREDATOR 922W  
 WHEATLAND LADY 752 T  
**MRL MISS 575Y**  
 TH BLACK EDITION 8R  
 MRL MISS 332T  
 MRL MISS 301M

CE	BW	WW	YW	MCE	MWW	MILK
6	3.4	86.1	133.8	3.1	62.6	19.5
API	118.66	TI	76.54			

*Bred to Hart State of War 056C on April 4  
 Exposed to R Plus Focus 7041E April 30 - June 1.*

This one has been a standout every stage of her life. The Riddler daughters are beautiful uddered, powerful productive females and this one is out of one of our most productive Predator daughters. Her daughter in last years sale was one of my absolute favourites going to Dan Loewen in BC, the year before was a full sister, our 2nd high selling female going to Cornerstone. This female is one that is really hard to part with but we're excited to see where she ends up.



2 Feb 2020 : BPG1309313 : Pld PB

## 12 MRL MISS 0618H

BW: 100 lbs WW: 736 lbs

LFE THE DARK NIGHT 350U  
 LFE GOTHAM 819Y  
 LFE BEST LADY 47W  
**LFE THE RIDDLER 323B**  
 TNT TANKER U263  
 LFE BS CHARO 23Y  
 LFE CHARO 3N  
 WHEATLAND PREDATOR 922W  
 MRL INTEGRITY 76Y  
 MRL MISS 570U  
**MRL MISS 4445B**  
 TNT POWER SURGE T404  
 MRL MISS 486X  
 CROSSROAD PIZAZZ 274P

CE	BW	WW	YW	MCE	MWW	MILK
3.5	5.3	87.7	137.5	3.8	62.2	18.3
API	112.05	TI	74.72			

*Bred to Hart State of War 056C on April 27  
 Exposed to R Plus Focus 7041E April 30 - June 1.*

The Riddler daughters we have in production are nothing short of awesome. He is a sire that really clicked on our cow type here at MRL, making it really hard to part with even one of these daughters but we have dug really deep for this event. This one in particular goes back to the same cow family as the feature State of War daughter, Lot 19. Take advantage of opportunities when they present themselves fellas. This one will be a powerful cow!



# BLACK SIMMENTAL BRED HEIFERS

7 Jan 2020 : BPGI308982 : Pld PB

## 13 MRL MISS 0512H

BW: 80 lbs WW: 732 lbs

WELSH'S WARSAW 312Z  
HART STATE OF WAR 056C  
HART MISS 102A  
**MRL CERTIFIED 223E**  
KOP STOCKMAN 134S  
MRL MISS 477U  
MRL MISS 863S

MRL DISCOVERY 21A  
MRL CRIME SCENE 100C  
MRL MISS 396X  
**DHS MS CRIME SCENE 14E**  
HOOKS SHEAR FORCE 38K  
CREST'S VIEW 16Z  
CREST'S VIEW 58X

CE	BW	WW	YW	MCE	MWW	MILK
9.8	2.3	79.9	126.9	6.8	68.1	28.1
API	TI		75.86			

*Bred to WS Proclamation E202 on April 7*  
*Exposed to R Plus Focus 7041E April 30 - June 1.*  
Here's the lead off Certified female and first one we have offered for sale. MRL Certified certainly turned some heads as our lead off bull in our 2019 sale and he is one impressive dude. On the dams side is a young female quickly making a name for herself we purchased at Shades from Downhill Simmentals out of the MRL Crime Scene bull. Her first calf was a feature \$10,000 heifer in last years sale and has done it again on this one. Our top red cow family (477U) and top black cow family (55W) show up n the pedigree.



17 Jan 2020 : BPGI310796 : Pld PB

## 14 MRL MISS 0563H

BW: 62 lbs WW: 690 lbs

WELSH'S WARSAW 312Z  
HART STATE OF WAR 056C  
HART MISS 102A  
**MRL CERTIFIED 223E**  
KOP STOCKMAN 134S  
MRL MISS 477U  
MRL MISS 863S

WHEATLAND PREDATOR 922W  
MRL EL TIGRE 52Z  
MRL MISS 836W  
**MRL MISS 7366E**  
TH BLACK EDITION 8R  
MRL MISS 536U  
SIMMENTAL/RED ANGUS

CE	BW	WW	YW	MCE	MWW	MILK
6.9	3.1	77.7	117.3	2.7	63.8	24.9
API	TI		71.02			

*Bred to LFE Night Hawk April 8*  
*Exposed to R Plus Focus 7041E April 30 - June 1.*  
Two of the most impressive herd bulls we have ever raised and sold in this pedigree. A Certified x El Tigre combination and throw in our 477U, 863W donors and State of War and Black Edition. Bred early to the exciting LFE Night Hawk bull should click!



28 Jan 2020 : BPGI311080 : Pld PB

## 15 MRL MISS 0607H

BW: 90 lbs WW: 742 lbs

WELSH'S WARSAW 312Z  
HART STATE OF WAR 056C  
HART MISS 102A  
**MRL CERTIFIED 223E**  
KOP STOCKMAN 134S  
MRL MISS 477U  
MRL MISS 863S

TNT BOOTLEGGER 2268  
MRL CAPONE 130B  
MRL MISS 836W  
**MRL MISS 7413E**  
TNT GUNNER N208  
MRL MISS 470U  
MISS MRL 491G

CE	BW	WW	YW	MCE	MWW	MILK
7.2	4.3	86.5	130.3	5.1	73.9	30.6
API	TI		76.06			

*Bred to LFE Night Hawk April 7*  
*Exposed to R Plus Focus 7041E April 30 - June 1.*  
There might not be one in the sale with a more stacked pedigree. Once again 477U, 863S, 470U, 836W donors and sires Capone, SOW, Bootlegger and Gunner! Trust the genetics boys, they will always shine through. Her young dam has already raised a lead off bull in our 2020 sale going to Sonny Berndt's strong herd in North Dakota. A sleeper here!

20 Jan 2020 : BPGI310778 : Homo Pld PB

## 16 MRL MISS 0577H

BW: 80 lbs WW: 756 lbs

FBFS WARSAW 068W  
WELSH'S WARSAW 312Z  
WELSHS ROSIE 102W  
**HART STATE OF WAR 056C**  
SKORS BLACK ENTICER 287Y  
HART MISS 102A  
HART MISS X534

KUNTZ SHERIFF 8A  
MRL PROGRESS 152D  
MRL MISS 836W  
**MRL MISS 8517F**  
LFE THE RIDDLER 323B  
MRL MISS 6752D  
MRL MISS 310X

CE	BW	WW	YW	MCE	MWW	MILK
9.4	2.1	92.2	141.8	4.4	74	27.9
API	TI		82.96			

*Bred to LFE Night Hawk April 5*  
*Exposed to R Plus Focus 7041E April 30 - June 1.*  
This group of State of War heifers is a really nice group. This one in particular is out of one of our very best F females, a progress daughter out of the 310X donor. Pretty powerful pedigree and numbers and one you will want to watch on video. Homo polled.

6 Feb 2020 : BPGI311256 : Pld PB

## 17 MRL MISS 0631H

BW: 80 lbs WW: 676 lbs

FBFS WARSAW 068W  
WELSH'S WARSAW 312Z  
WELSHS ROSIE 102W  
**HART STATE OF WAR 056C**  
SKORS BLACK ENTICER 287Y  
HART MISS 102A  
HART MISS X534

COME AS U R RED ROCKET  
MRL MISSILE 138C  
MRL MISS 2423Z  
**MRL MISS 7332E**  
LFE BUNDI 300X

CE	BW	WW	YW	MCE	MWW	MILK
10	1.5	83.8	124.2	4.3	67.4	25.5
API	TI		76.49			

*Bred to LFE Night Hawk April 8*  
*Exposed to R Plus Focus 7041E April 30 - June 1.*  
This is another dandy in the SOW sire group. Her young Missile dam can get er done. Last year, her first heifer was on of the top Focus daughters going to a good outfit in North Dakota, Brueckner-Eales Simmentals. Early service to Night Hawk should really work well.

4 Feb 2020 : BPG1311100 : Pld PB

# BLACK SIMMENTAL BRED HEIFERS

## 18 MRL MISS 0625H

BW: 80 lbs WW: 692 lbs

FBFS WARSAW 068W  
 WELSH'S WARSAW 312Z  
 WELSHS ROSIE 102W  
**HART STATE OF WAR 056C**  
 SKORS BLACK ENTICER 287Y  
 HART MISS 102A  
 HART MISS X534

MRL INTEGRITY 76Y  
 MRL DISCOVERY 21A  
 TSN MS EDITION 55W  
**MRL MISS 6702D**  
 TH BLACK EDITION 8R  
 MRL MISS 369T  
 MRL MISS 748R

CE	BW	WW	YW	MCE	MWW	MILK
12.2	1.2	80.1	129.3	8.3	64.2	24.1
API	128.3	TI	77.74			

*Bred to WS Proclamation E202 on April 8*  
*Exposed to R Plus Focus 7041E April 30 - June 1.*  
 We hate to part with any of these State of War daughters as they are becoming some of our most beautiful young cows, outcross pedigreed and boast incredible balanced numbers. One out of this cow family is even harder. The dam has raised a top bull for Goudy Prairie Acres and grandam, 3 herd bulls to top seedstock operations including Stangeland Simmentals, ND, the \$27,000 Border Patrol to Mandan Lake Simmentals and \$14,000 Thor to Crocus Simmentals. Early service to Proclamation will be exciting in January.



8 Feb 2020 : BPG1310762 : Pld PB

## 19 MRL MISS 0636H

BW: 80 lbs WW: 740 lbs

FBFS WARSAW 068W  
 WELSH'S WARSAW 312Z  
 WELSHS ROSIE 102W  
**HART STATE OF WAR 056C**  
 SKORS BLACK ENTICER 287Y  
 HART MISS 102A  
 HART MISS X534

NCB COBRA 47Y  
 R PLUS VENOM 4006B  
 IPU MS. TULA 104Z  
**MRL MISS 8598F**  
 PVF-BF BF26 BLACK JOKER  
 CROSSROAD PIZAZZ 274P  
 ULTRA MS PLUS LADY 200M

CE	BW	WW	YW	MCE	MWW	MILK
11.4	2	86.9	134.2	7.3	72.8	29.3
API	127.26	TI	78.83			

*Bred to WS Proclamation E202 on April 8*  
*Exposed to R Plus Focus 7041E April 30 - June 1.*  
 This will be on that will draw some attention sale day. Once again sired by SOW and out of one of our most beautiful F females. A Venom daughter back to the Pizzaz Black Joker donor female. Powerful, unique pedigree, numbers that rank in the top end of the breed across the board and once again mated Proclamation. I'd be putting this one on the shortlist as she has all the pieces to be a future donor matron herself.



16 Jan 2020 : BPG1310700 : Pld PB

# BLACK SIMMENTAL BRED HEIFERS

## 20 MRL MISS 0559H

BW: 57 lbs WW: 814 lbs

KLONDIKE GOLD RUSH 418B  
ANCHOR "T" RUSTY 59G  
ANCHOR "T" HELGA 10Y  
**STARWEST POL BLUEPRINT**  
CHAMPS BRAVO  
PHS HOMOZYGOUS XCEPTIONAL  
WCC WELLS' PLD TALULAH 7T

MRL INTEGRITY 76Y  
MRL DISCOVERY 21A  
TSN MS EDITION 55W  
**MRL MISS 5351C**  
BLACK BARON  
MRL MISS 791Y  
SIMMENTAL/SIMMENTAL

CE	BW	WW	YW	MCE	MWW	MILK
12	2.4	78	117.6	8.5	65	26
API	110.25	TI	72.78			

*Bred to Hart State of War 056C on April 8*  
*Exposed to R Plus Focus 7041E April 30 - June 1.*  
This is a tank of a female with a white star. These Blueprint females were popular in last year's sale. Bred State of War. Boy, a blaze face State of War baby would be pretty cool and pretty profitable!



17 Feb 2020 : BPG1312324 : Pld PB

## 21 MRL MISS 0656H

BW: 80 lbs WW: 684 lbs

FBFS WARSAW 068W  
WELSH'S WARSAW 312Z  
WELSHS ROSIE 102W  
**HART STATE OF WAR 056C**  
SKORS BLACK ENTICER 287Y  
HART MISS 102A  
HART MISS X534

LFE RICH RAY 369Z  
LFE BS LEWIS 420B  
LFE HEAVEN SENT 30X  
**MRL MISS 7343E**  
TNT POWER SURGE T404  
MRL MISS 663Y  
MRL MISS 633U

CE	BW	WW	YW	MCE	MWW	MILK
11.4	1.5	76.6	118.7	5.9	68.1	29.8
API	123.49	TI	75.06			

*Bred to W/S Proclamation E202 on March 31*  
*Exposed to R Plus Focus 7041E April 30 - June 1.*  
Yet another beautiful State of War daughter with an EPD profile that ranks her top end of the breed in 11 traits. Her calf by Proclamation will boast impressive numbers.

26 Feb 2020 : BPG1310142 : Pld PB

## 22 MRL MISS 0665H

BW: 84 lbs WW: 684 lbs

FBFS WARSAW 068W  
WELSH'S WARSAW 312Z  
WELSHS ROSIE 102W  
**HART STATE OF WAR 056C**  
SKORS BLACK ENTICER 287Y  
HART MISS 102A  
HART MISS X534

LFE GOTHAM 819Y  
LFE THE RIDDLER 323B  
LFE BS CHARO 23Y  
**MRL 111D**  
TNT ON STAR S312  
MRL MISS 656U  
MRL MISS 762R

CE	BW	WW	YW	MCE	MWW	MILK
10.3	2.3	92.1	144	6.4	75.8	29.7
API	131.11	TI	83.86			

*Bred to LFE Night Hawk April 8*  
*Exposed to R Plus Focus 7041E April 30 - June 1.*  
One of my favorites in this group not sure how we missed getting her in the picture pen. Her sister in last year's sale was one of the high sellers at \$9750 to Jorgensen Land & Cattle. The dam is of course one of those productive Riddler daughters back to the 656U female that has been a big time producer.

1 March 2020 : BPG1310144 : Pld PB

## 23 MRL MISS 0670H

BW: 75 lbs WW: 644 lbs

WFL ABSOLUTE 51Y  
R PLUS 5015C  
IPU MS. 56U LINER 15A  
**R PLUS FOCUS 7041E**  
R PLUS HARD ROCK 145X  
MISS R PLUS 5102C  
MISS R PLUS 8094U

COME AS U R RED ROCKET  
RUST BULL 18C  
BEECH BROS YARA 122Y  
**MRL MISS 8559F**  
KOP TRUE NORTH 103Y  
MRL MISS 3339A  
MRL MISS 470U

CE	BW	WW	YW	MCE	MWW	MILK
9	2.1	74.2	109.8	6.1	61.6	24.5
API	118.22	TI	71.06			

*Bred to Hart State of War 056C on March 29*  
*Exposed to U2 38 Special April 30 - June 1.*  
These Focus females were popular last year. This is the only one on offer for 2021 and goes back to our awesome 470U cow family. The grandam 3339A has been stellar with 2 daughters in our herd and 2 high selling females to Dana and Megan Johns and the other to Triple R Simmentals last spring. She had a feature Tycoon son that went to Lemer Simmentals, ND.

27 Jan 2020 : BPG1309284 : Pld PB

## 24 MRL MISS 0606H

BW: 90 lbs WW: 786 lbs

MRL 130Y  
COME AS U R RED ROCKET  
MISS XCITING 14X  
**RUST BULL 18C**  
IPU REVOLUTION 172U  
BEECH BROS YARA 122Y  
BEECH BROS UNNA 817U

WHEATLAND BULL 680S  
WHEATLAND PREDATOR 922W  
WHEATLAND LADY 752 T  
**MRL MISS 2417Z**  
TNT KNOCK OUT R206  
MRL MISS 465U  
MRL MISS 339M

CE	BW	WW	YW	MCE	MWW	MILK
2.1	6.2	90	137.3	-0.4	62.5	17.5
API	93.45	TI	70.61			

*Bred to R Plus Focus 7041E on April 23*  
*Exposed to R Plus Focus 7041E April 30 - June 1.*  
Great cow family here back to the 339M cow family. A sister by Missile was the second heifer in the ring in 2019 going to Double KL Simmentals. AI bred to the high selling bull at R Plus Focus should really work.

10 Feb 2020 : BPG1310692 : Pld PB

## 25 MRL MISS 0639H

BW: 90 lbs WW: 664 lbs

MRL 130Y  
COME AS U R RED ROCKET  
MISS XCITING 14X  
**RUST BULL 18C**  
IPU REVOLUTION 172U  
BEECH BROS YARA 122Y  
BEECH BROS UNNA 817U

TNT DYNAMITE BLACK L137  
TH BLACK EDITION 8R  
BBN MS BLACK LADY 28H  
**MRL MISS 447X**  
TNT KNOCK OUT R206  
MRL MISS 465U  
MRL MISS 339M

CE	BW	WW	YW	MCE	MWW	MILK
3.3	5.1	79.2	122.2	1.5	58.6	19
API	92.09	TI	65.21			

*Exposed to R Plus Focus 7041E April 30 - June 1.*  
These Rust daughters are beauties. Easy doing, perfect uddered and productive. This female is out of the same cow family as the Lot 4 female. The 447X Edition female is a tank and one that we have never parted with a daughter of, with 4 working in our herd.

18 April 2020 : BPG1320080 : Homo Pld PB

## 26 MRL MISS 0707H

BW: 80 lbs WW: 735 lbs

R PLUS RELOAD 2006Z  
BBS LOAD 'M UP D202  
BBS RINGMAN B40  
**MRL 75F**  
TNT BOOTLEGGER Z268  
MRL MISS 4423B  
MRL MISS 553X

LFE GOTHAM 819Y  
LFE THE RIDDLER 323B  
LFE BS CHARO 23Y  
**MRL MISS 6709D**  
TNT POWER SURGE T404  
MRL MISS 2443Z  
MRL MISS 493U

CE	BW	WW	YW	MCE	MWW	MILK
11.2	1.9	92.3	140.1	7.9	74.6	28.4
API	125.77	TI	82.1			

*Bred to Hart State of War 056C on March 30*  
*Exposed to R Plus Focus 7041E April 30 - June 1.*  
A daughter of the MRL 75F bull you will hear a lot more of as we are using him heavily here at MRL. On the dam's side is an awesome Riddler daughter back to the 493U donor cow. A sister in the 2019 sale went to one of the good breeders in North Dakota, Clay Kaelberer Simmentals. Homo polled.

# HOW TO PARTICIPATE IN THE DLMS FARM GATE TIMED AUCTION WITH EXTENDED BIDDING:



Thursday, December 9 - 9 AM CST - bidding begins

Friday, December 10 - 6 PM CST - auction closes farmgate style

1. Visit <https://farmgatetimeductions.ca>, click the LOGIN/REGISTRATION button. First time users will select the REGISTER button from this page. Fill out the registration form to sign up for a free user account and it allows you to select a user name and password for use on all Farm Gate Timed auctions. This program will send you text and email messages whenever there is activity on your favorite lots or someone challenges your proxy bid and this is why you will be asked for both your current email and cell phone number. If you are a past participant in the Farm Gate Timed auctions simply enter your user name and password to continue. This takes you to a list of both current and upcoming Farm Gate Auctions.
2. You can choose your favorite lots in this sale at this time and the program will allow you to open either all sale lots or just your favorite lots on your screen. Anytime there is active bidding on a lot you have identified on your favorite list you will get a text and/or an email noting this activity.
3. The program allows you to place a proxy bid on any sale lot. This in fact protects your interest in any lot of interest for you to a specified dollar value you set, when you may not be able to give 100% attention to the sale. If the lot has a \$2000 bid on it and you place a proxy bid of \$3500 into the system, the computer will bid \$2100 for you but if someone else bids \$2200, the computer will again bid for you, this time at \$2300. The system will look after your interest to a maximum of \$3500. If another bidder is on at \$3600, your proxy will no longer be effective and you will not longer have the winning bid on this lot without once again logging in and bidding again or moving your attention to a second lot of interest.
4. At closing time of the sale the entire sale will extend bidding for 5 minutes if a bid is placed on any lot in the sale. Any bid received after 6 PM CST will extend the sale by 5 minutes from the time of that bid. When no bidding occurs for 5 min the computer will declare the sale finished.
5. Within 24 hours of the sale close the Sale Manager, Bohrson Marketing Services will contact all winning bidders to arrange payment, transfer of pedigrees and deliver/pickup of your lot.

If you require assistance with using the DLMS Farm Gate website, if you don't understand how to create a favorites list, if you can't figure out the proxy bid or you just plain want to bid via phone, please talk to any of the DLMS team, sales management, or MRL personnel.

**WHAT IS RACEHORSE STYLE SALE CLOSE?** Racehorse style sale close is when the entire sale stays open in extended bidding. This type of sale allows you as the bidder to change to a different lot within the same sale if the bidding has gone into extended bidding.

**HOW WILL EXTENDED BIDDING WORK?** When we get to the close out end time the clock for close extends with any bid placed with less than 5 min on the clock. This type of extended bidding turns the end time to more of a soft time. Extended bidding allows bidders to compete in lots like a real auction and gives all bidders the same time to make a decision. Always follow the clock to see how much time remains in the sale you are interested in.

If you require assistance with the Racehorse auction process or bidding via phone talk to any of the DLMS team, sale management, or MRL personnel and we can help you in purchasing the lot you are interested in.

DLMS - Mark Shologan - 780.699.5082 or DLMS - Whitney Bosovich - 780.991.3025

15 Jan 2020 : PTG1341511 : Pld PB

# RED SIMMENTAL BRED HEIFERS

## 27 MRL MISS 0554H

BW: 86 lbs WW: 752 lbs

CNS DREAM ON L186  
WS PILGRIM H182U  
WS MARLA 276M  
**CCLT ALLIANCE 91C**  
BB BARACK 1017T  
BROOKS SHINIA 1A  
BROOKS RED HOT Y17

R PLUS 2169M  
KOP STOCKMAN 134S  
KOP RED LADY 9N  
**MRL MISS 477U**  
LCHMN BODYBUILDER 7303F  
MRL MISS 863S  
MISS MRL 491G

CE	BW	WW	YW	MCE	MWW	MILK
4.8	4.8	81.7	111.5	0.1	72.7	31.8
API	115.01	TI	74.37			

Bred to KWA Future 3G on April 25.

Exposed to R Plus Focus 7041E April 30 - June 1.

I can't believe we are offering one let alone two direct daughters of the legendary 477U donor cow and can guarantee you will not get another chance! The lead female Lot 1 in the black division and this beauty in the shade of red will be must adds to any progressive breeding program. I could fill this page and the next with the attribute of this cow family which includes 477U herself, her dam the 863S donor, her sister the 470U donor daughter 7511F & 4424 B donors in production now and long list of big time herd bulls to their credit including Max, Heritage, Prince Albert, Certified and on and on. Without a doubt the #1 red cow family here at MRL.



12 Jan 2020 : PG1311041 : Pld PB

## 28 MRL MISS 0535H

BW: 75 lbs WW: 760 lbs

WS ALL-AROUND Z35  
WS ALL ABOARD B80  
WS LITTLE SISTER W37  
**WS EPIC E152**  
GW RED COAT 099TS  
WS MAJESTIC Z133  
WS MOTHER LODE W21

R PLUS RELOAD 2006Z  
BBS LOAD \*M UP D202  
BBS RINGMAN B40  
**MRL MISS 8533F**  
DASR MR 8Y  
MRL MISS 4515B  
MRL MISS 850W

CE	BW	WW	YW	MCE	MWW	MILK
8.8	1.2	83.7	131	4.2	70.4	28.5
API	121.8	TI	79.12			

Bred to KWA Can Am on April 8.

Exposed to R Plus Focus 7041E April 30 - June 1.

This is Lance's first heifer to sell and she is a good one and as stout as any in the pen. Her dam is a beautiful, perfectly uddered, blaze faced Load M Up daughter you will see more of and has a dandy Playmaker son in the pen for the spring bull sale. Bred early to the exciting KWA Can Am bull will be exciting.



15 Jan 2020 : PG1308983 : Pld PB

## 29 MRL MISS 0549H

BW: 85 lbs WW: 824 lbs

DCR MR MOON SHINE X102  
TNT BOOTLEGGER Z268  
TNT MISS W70  
**MRL RED WHISKEY 101B**  
KOP CROSBY 137W  
MRL MISS 677Y  
MRL MISS 355T

WHEATLAND PREDATOR 922W  
MRL EL TIGRE 52Z  
MRL MISS 836W  
**MRL MISS 5314C**  
TH BLACK EDITION 8R  
MRL MISS 2434Z  
MRL MISS 682W

CE	BW	WW	YW	MCE	MWW	MILK
6.3	4.2	90.2	128.3	5.8	67.2	22.1
API	105.4	TI	77.06			

Bred to KWA Can Am on April 1.

Exposed to R Plus Focus 7041E April 30 - June 1.

The offering wouldn't be complete without a daughter of the legendary Red Whiskey bull although we hate to part with any of them. A full sister went to Ekstrum Simmentals in South Dakota in our 2019 sale. Once again service to the MRL Statement son that topped Ashworth's sale last spring KWA Can Am.

16 Jan 2020 : PG1310698 : Pld PB

## 30 MRL MISS 0558H

BW: 60 lbs WW: 800 lbs

KLONDIKE GOLD RUSH 418B  
ANCHOR "T" RUSTY 59G  
ANCHOR "T" HELGA 10Y  
**STARWEST POL BLUEPRINT**  
CHAMPS BRAVO  
PHS HOMOZYGOUS XCEPTIONAL  
WCC WELLS' PLD TALULAH 7T

MRL INTEGRITY 76Y  
MRL DISCOVERY 21A  
TSN MS EDITION 55W  
**MRL MISS 5351C**  
BLACK BARON  
MRL MISS 791Y  
SIMMENTAL/SIMMENTAL

CE	BW	WW	YW	MCE	MWW	MILK
12	2.4	78	117.6	8.5	65	26
API	110.25	TI	72.78			

Exposed to R Plus Focus 7041E April 30 - June 1.

Here's the twin sister to the powerful Lot 20 heifer in the black division. Red blaze heifer here that is big bodied and will raise some bull calves.

23 Jan 2020 : PG1310770 : Pld PB

## 31 MRL MISS 0591H

BW: 75 lbs WW: 760 lbs

DCR MR MOON SHINE X102  
TNT BOOTLEGGER Z268  
TNT MISS W70  
**MRL CAPONE 130B**  
MRL BLACK BEAR 79S  
MRL MISS 836W  
MRL MISS 828S

LFE RICH RAY 369Z  
LFE BS LEWIS 420B  
LFE HEAVEN SENT 30X  
**MRL MISS 7383E**  
TH BLACK EDITION 8R  
MRL MISS 2434Z  
MRL MISS 682W

CE	BW	WW	YW	MCE	MWW	MILK
9	2.7	74.8	116.9	6.2	62.8	25.4
API	117.88	TI	74.42			

Bred to KWA Future 3G on April 9.

Exposed to R Plus Focus 7041E April 30 - June 1.

A Capone daughter here that might be a sleeper. Look at the cow power in this pedigree TNT W70, LFE Heaven Sent 30X and our MRL 836W. 3 of the big time donors in the history of the breed. Her dam has a herd bull working for Corey Jorgenson, ND and a dandy Playmaker son in the pen for March.

15 Jan 2020 : PGI311053 : Pld PB

# RED SIMMENTAL BRED HEIFERS

## 32 MRL MISS 0552H

BW: 80 lbs WW: 834 lbs

WS BEEF MAKER R13  
 IPU RED WESTERN 49X  
 IPU 52N POCAHONTAS 215U  
**KWA FLYF RED MOUNTAIN 16Z**  
 KWA RED ROCK 5T  
 KWA MS ROCK 14X  
 KWA MS BARON 9U  
 COME AS U R RED ROCKET  
 RUST BULL 18C  
 BEECH BROS YARA 122Y  
**MRL MISS 8634F**  
 LFE BUNDI 300X  
 MRL MISS 2323Z  
 MRL MISS 76U

CE	BW	WW	YW	MCE	MWW	MILK
6.6	3.6	91.7	140.2	3.1	77.8	31.9
API	128.53	TI	84.46			

*Bred to KWA Can Am on April 4.*  
*Exposed to R Plus Focus 7041E April 30 - June 1.*  
 This powerfully constructed cherry red Mountain daughter has garnered some attention already in the pen. She is flat out awesome from every angle and is one that will surely crank some herd bulls. In fact, the one she is carrying could be the ticket. The grandam produced a couple of feature bred heifers going to Johns Simmentals and Ashworth Farm & Ranch and 2 big time herd bulls. One to long time customer Bill Seymour and the MRL Sysco bull that did a fantastic job for the Zimmers at Spring Lake Simmentals.



23 Jan 2020 : PGI310771 : Pld PB

## 33 MRL MISS 0592H

BW: 76 lbs WW: 652 lbs

WS BEEF MAKER R13  
 IPU RED WESTERN 49X  
 IPU 52N POCAHONTAS 215U  
**KWA FLYF RED MOUNTAIN 16Z**  
 KWA RED ROCK 5T  
 KWA MS ROCK 14X  
 KWA MS BARON 9U  
 COME AS U R RED ROCKET  
 RUST BULL 18C  
 BEECH BROS YARA 122Y  
**MRL MISS 8505F**  
 MRL HAMMER 125X  
 MRL MISS 3484A  
 ANGUS/ANGUS

CE	BW	WW	YW	MCE	MWW	MILK
7.5	2.4	68.9	108.5	3.7	59.9	25.4
API	118.51	TI	73.52			

*Bred to KWA Can Am on April 9.*  
*Exposed to R Plus Focus 7041E April 30 - June 1.*  
 A 3/4 sister to the Lot 32 heifer above. This Mountain by Rust combination has really clicked. This is a definite brood cow in the making and once again one with huge potential to raise some herd bulls. Bred the same way to Can Am. We're having a hard time figuring out which one we like best. Get em both bought and you won't be wrong.



# RED SIMMENTAL BRED HEIFERS

14 Feb 2020 : PGI310764 : Homo Pld PB

## 34 MRL MISS 0648H

BW: 86 lbs WW: 755 lbs

R PLUS HARD ROCK 145X  
R PLUS RELOAD 2006Z  
IPU RED BARONESS 1T  
BBS LOAD 'M UP D202  
MRL RINGMAN 112Z  
BBS RINGMAN B40  
BBS GEMINI Y53

KOP Crosby 137W  
MRL 91Y  
MRL MISS 493U  
MRL MISS 3470A  
TNT POWER SURGE T404  
MRL MISS 763W  
MRL MISS 431N

CE	BW	WW	YW	MCE	MWW	MILK
6.7	3.4	76.2	113.8	5	67	28.9
API	TI					
110.09	68.44					

Bred to KWA Can Am on April 6.

Exposed to R Plus Focus 7041E April 30 - June 1.

One of my absolute favorites in this powerful group. These Load M Up daughters are beauties with power and near perfect udder quality. On the bottom side is one of our cherished 91Y daughters that has daughters working at R Plus and another at Oberles Circle 7. Same cow family here that produced the like of MRL Hurricane, Capone, El Tigre and on and on. Homo polled.



20 Feb 2020 : PGI310146 : Pld PB

## 35 MRL MISS 0657H

BW: 84 lbs WW: 760 lbs

R PLUS HARD ROCK 145X  
R PLUS RELOAD 2006Z  
IPU RED BARONESS 1T  
BBS LOAD 'M UP D202  
MRL RINGMAN 112Z  
BBS RINGMAN B40  
BBS GEMINI Y53

TNT BOOTLEGGER Z268  
MRL CAPONE 130B  
MRL MISS 836W  
MRL MISS 6658D  
LFE RED CASINO 3036X  
MRL MISS 3513A  
MRL MISS 530U

CE	BW	WW	YW	MCE	MWW	MILK
6.2	3.8	85.4	130.8	4.5	65.1	22.4
API	TI					
108.22	73.85					

Bred to KWA Can Am on April 5.

Exposed to R Plus Focus 7041E April 30 - June 1.

Another powerful Load M Up daughter with that cow look. Capone and Casino on the bottom side will only add to the predictability and breeding prowess here. Bred early to Can Am will be exciting!



31 Jan 2020 : PGI309304 : Pld PB

## 36 MRL MISS 0611H

BW: 90 lbs WW: 794 lbs

R PLUS HARD ROCK 145X  
R PLUS RELOAD 2006Z  
IPU RED BARONESS 1T  
BBS LOAD 'M UP D202  
MRL RINGMAN 112Z  
BBS RINGMAN B40  
BBS GEMINI Y53

WHEATLAND BULL 680S  
WHEATLAND PREDATOR 922W  
WHEATLAND LADY 752 T  
MRL MISS 3369A  
MRL BLACK BEAR 79S  
MRL MISS 373X  
SIMMENTAL/RED ANGUS

CE	BW	WW	YW	MCE	MWW	MILK
5.9	3.5	82.5	125.4	2.1	66.1	24.8
API	TI					
106.44	72.11					

Bred to KWA Future 3G on March 30.

Exposed to R Plus Focus 7041E April 30 - June 1.

You're gonna like these Load M Up daughters. A little different twist to a red pedigree with Predator on the bottom side here. The 3369A cow has been a bull producer with 2 top sons at Korey Jorgeson, ND, and one at Stewart Ranches.

25 Feb 2020 : PGI310761 : Pld PB

## 37 MRL MISS 0664H

BW: 88 lbs WW: 720 lbs

R PLUS HARD ROCK 145X  
R PLUS RELOAD 2006Z  
IPU RED BARONESS 1T  
BBS LOAD 'M UP D202  
MRL RINGMAN 112Z  
BBS RINGMAN B40  
BBS GEMINI Y53

LFE BS LEWIS 322U  
LFE RED CASINO 3036X  
LFE DREAM LADY 112P  
MRL MISS 4507B  
WS BEEF MAKER R13  
MRL MISS 694W  
MRL MISS 309T

CE	BW	WW	YW	MCE	MWW	MILK
6	4.3	85.2	130.7	3.5	65.9	23.3
API	TI					
107.16	73.85					

Bred to KWA Can Am on April 4.

Exposed to R Plus Focus 7041E April 30 - June 1.

Phenotypically just like her sisters above and performance numbers in the top end of the breed. These Load M Up daughters are oozing with maternal power and once again bred early to Can Am.

1 Feb 2020 : PGI309307 : Pld PB

## 38 MRL MISS 0615H

BW: 92 lbs WW: 780 lbs

WHEATLAND FINAL AFFAIR  
WHEATLAND BENTLEY 630D  
WHEATLAND LADY 72X  
IPU BENTLEY 81F  
MR NLC UPGRADE U8676  
CLAYHILL FANCY LUCA 39A  
CLAYHILL FANCY PANTS 32S

WHEATLAND PREDATOR 922W  
MRL EL TIGRE 52Z  
MRL MISS 836W  
MRL MISS 4369B  
MRL BLACK JACK 11M  
MRL MISS 847S  
MRL MISS 440N

CE	BW	WW	YW	MCE	MWW	MILK
4.2	5.6	95.5	136.3	1.9	70.8	23
API	TI					
101.42	76.55					

Bred to KWA Future 3G on April 26.

Exposed to R Plus Focus 7041E April 30 - June 1.

This one surely deserved her picture in the book. Sired by the \$90,000 IPU Bentley and out of a cow that is a maternal sister to the 310X donor cow (dam of \$60,000 MRL Pretty Reckless). The 4369B cow can get her done with 3 front end bulls to her credit to M5 Land & Cattle, Bouchard Livestock and Richard Van Sprundel.



8 Jan 2020 : PG1310710 : Pld PB

**39 MRL MISS 0518H**

BW: 96 lbs WW: 778 lbs

NCB COBRA 47Y  
 R PLUS VENOM 4006B  
 IPU MS. TULA 104Z  
**MRL STATEMENT 3F**  
 MRL TO THE MAX 70Z  
 MRL MISS 6600D  
 MRL MISS 3354A  
 LFE BS LEWIS 322U  
 LFE RED CASINO 3036X  
 LFE DREAM LADY 112P  
**MRL MISS 4474B**  
 IPU RED NUGGET 132N  
 TSN MS NUGGET 53U  
 DXH MS 600 PLUS 2M



CE	BW	WW	YW	MCE	MWW	MILK
5.9	3.9	76.9	116.2	3	64.8	26.3
API	104.23	TI	66.64			

Bred to KWA Future 3G on April 25.  
 Exposed to R Plus Focus 7041E April 30 - June 1.

This cherry red powerhouse Statement daughter will garner some attention and be a contender for pole position in this powerful red group. She comes by it honestly out of a really nice Casino female that has 1 daughter working here at MRL and a feature female in our 2018 sale going to Sunny Valley Simmentals. We think this one has big time potential.

22 Jan 2020 : PG1311075 : Pld PB

**40 MRL MISS 0585H**

BW: 85 lbs WW: 758 lbs

NCB COBRA 47Y  
 R PLUS VENOM 4006B  
 IPU MS. TULA 104Z  
**MRL STATEMENT 3F**  
 MRL TO THE MAX 70Z  
 MRL MISS 6600D  
 MRL MISS 3354A  
 KOP CROSBY 137W  
 MRL 91Y  
 MRL MISS 493U  
**MRL MISS 4392B**  
 BBS DAKOTA RED L68  
 MRL MISS 555N  
 JAV MS DAYTIME 7F



CE	BW	WW	YW	MCE	MWW	MILK
8.8	2.6	75.8	107.4	6.1	69.6	31.7
API	113.57	TI	67.98			

Bred to KWA Future 3G on April 4.  
 Exposed to R Plus Focus 7041E April 30 - June 1.

The MRL Statement bull is a breeding machine with a son last spring topping our sale, MRL Southern Comfort, and 2 sons at Ashworths that blew the top off including KWA Can Am that is service to many of the females in this offering. Well the daughters are every bit as good. This one out of one of those special 91Y daughters. This one has no chance but to be a cow with this pedigree.

# RED SIMMENTAL BRED HEIFERS

17 Jan 2020 : PGI310783 : Pld PB

## 41 MRL MISS 0569H

BW: 80 lbs WW: 736 lbs

HOOKS SHEAR FORCE 38K  
WS BEEF MAKER R13  
DCR MS RIBEYE N72  
**IPU RED WESTERN 49X**  
TNT ACCELERATOR S226  
IPU 52N POCAHONTAS 215U  
IPU RED POCAHONTAS 52N

COME AS U R RED ROCKET  
RUST BULL 18C  
BEECH BROS YARA 122Y  
**MRL MISS 8537F**  
WHEATLAND PREDATOR 922W  
MRL MISS 635Y  
MRL MISS 381T

CE	BW	WW	YW	MCE	MWW	MILK
6.1	3.1	77.7	118.3	1.6	60.9	22
API	126.38	TI	76.48			

Bred to KWA Future 3G on April 8.

Exposed to R Plus Focus 7041E April 30 - June 1.

An average pic here of one of the really good heifer in the pen. In fact she has been the pick of a few visitors thus far. We have only ever offered a select few Red Western daughters over the years and this may very well be the last chance as the semen is about extinct. These Western daughters in production have been stellar both here at MRL and at Ashworths. No semen has ever been sold being exclusive to these programs. On the bottom side is one of our really good black cow families going back to the 381T cow that may have been my favourite Black Edition daughter ever.



31 Jan 2020 : PGI309305 : Pld PB

## 42 MRL MISS 0612H

BW: 92 lbs WW: 912 lbs

MRL 130Y  
COME AS U R RED ROCKET  
MISS XCITING 14X  
**RUST BULL 18C**  
IPU REVOLUTION 172U  
BEECH BROS YARA 122Y  
BEECH BROS UNNA 817U

TNT DYNAMITE BLACK L137  
TH BLACK EDITION 8R  
BBN MS BLACK LADY 28H  
**MRL MISS 2434Z**  
MRL ACE 27G  
MRL MISS 682W  
MRL MISS 289T

CE	BW	WW	YW	MCE	MWW	MILK
3.5	5.4	92.7	142.2	2.9	74.1	27.7
API	102.91	TI	75.64			

Exposed to R Plus Focus 7041E April 30 - June 1.

A powerful long bodied red blaze Rust daughter here out of another one of those productive Black Edition daughters. This one will produce some herd bulls and add a little chrome.



13 March 2020 : PRS1359417 : Pld 1/2 blood

## 43 MRL MISS 0680H

BW: 90 lbs WW: 732 lbs

MRL 130Y  
COME AS U R RED ROCKET  
MISS XCITING 14X  
**RUST BULL 18C**  
IPU REVOLUTION 172U  
BEECH BROS YARA 122Y  
BEECH BROS UNNA 817U

**RED ANGUS/RED ANGUS**

CE	BW	WW	YW	MCE	MWW	MILK
5.7	3	79.3	123.5	3.3	61.8	22.1
API	104.27	TI	70.96			

Bred to KWA Future 3G on April 24.

Exposed to R Plus Focus 7041E April 30 - June 1.

This 1/2 blood heifer is truly one of the top heifers in the sale. Dark red, long bodied and a cool look. She won't be hard to find in the pen.

22 March 2020 : PGI310139 : Pld PB

## 44 MRL MISS 0682H

BW: 92 lbs WW: 795 lbs

MRL 130Y  
COME AS U R RED ROCKET  
MISS XCITING 14X  
**RUST BULL 18C**  
IPU REVOLUTION 172U  
BEECH BROS YARA 122Y  
BEECH BROS UNNA 817U

NUG COLORADO 13U  
DASR MR 8Y  
DASR 8P  
**MRL MISS 4496B**  
LFE INFERNO 484R  
MRL MISS 619U  
MRL MISS 427N

CE	BW	WW	YW	MCE	MWW	MILK
1.6	7	97.9	150.7	2.1	79.2	30.2
API	98.66	TI	76.86			

Bred to KWA Future 3G on April 8.

Exposed to R Plus Focus 7041E April 30 - June 1.

Powerful red baldy heifer here. These Rust daughters are beauties. If you want to add some power and chrome, here's your girl bred to the KWA Future bull should really work here.

17 Jan 2020 : PGI310701 : Pld PB

## 45 MRL MISS 0562H

BW: 85 lbs WW: 756 lbs

HOOKS SHEAR FORCE 38K  
WS BEEF MAKER R13  
DCR MS RIBEYE N72  
**IPU RED WESTERN 49X**  
TNT ACCELERATOR S226  
IPU 52N POCAHONTAS 215U  
IPU RED POCAHONTAS 52N

LFE RED CASINO 3036X  
MRL BLACK TOP 127A  
MRL MISS 570U  
**MRL MISS 8576F**  
LFE INFERNO 484R  
MRL MISS 850W  
MRL MISS 596P

CE	BW	WW	YW	MCE	MWW	MILK
5.9	4.1	74	113.1	2.2	65.2	28.2
API	115.71	TI	71.77			

Bred to KWA Can Am on April 8.

Exposed to R Plus Focus 7041E April 30 - June 1.

Red blaze Western daughter here back to MRL Blacktop and one of our top fullblood cow families. I'm betting this one is pretty quick ROI. Once again bred to the high dollar Can Am sire.

23 Jan 2020 : PGI310690 : Pld PB

# RED SIMMENTAL BRED HEIFERS

## 46 MRL MISS 0595H

BW: 106 lbs WW: 880 lbs

MRL 130V  
 COME AS U R RED ROCKET  
 MISS XCITING 14X  
**RUST BULL 18C**  
 IPU REVOLUTION 172U  
 BEECH BROS YARA 122Y  
 BEECH BROS UNNA 817U  
 WS BEEF MAKER R13  
 IPU RED WESTERN 49X  
 IPU 52N POCAHONTAS 215U  
**MRL MISS 2374Z**  
 MRL HURRICANE 27R  
 MRL MISS 503X  
 MRL MISS 750R

CE	BW	WW	YW	MCE	MWW	MILK
-1.2	8.5	97.1	149.2	-1.4	75.1	26.5
API	100.61	TI	77.11			

*Bred to KWA Future 3G on March 29.  
 Exposed to R Plus Focus 7041E April 30 - June 1.*

The Rust 18C progeny have been so consistent but I think somewhat overlooked the past couple of years. The sons are powerful and always popular with the commercial cowboys. Last spring our lead off black bull was sired by Rust MRL Powerplay going to Boucard Livestock for \$35000. The real strength to the 18C sire I believe is in his daughters they are ideally framed, flawless phenotypically and absolutely perfect uddered. This one in particular is hard to part with we think she is a definite feature female and out of an exclusive Western daughter to boot. You should have this one high on the list of must own choices December 10th.



10 Jan 2020 : PGI310749 : Homo Pld PB

## 47 MRL MISS 0529H

BW: 92 lbs WW: 826 lbs

MRL 130V  
 COME AS U R RED ROCKET  
 MISS XCITING 14X  
**RUST BULL 18C**  
 IPU REVOLUTION 172U  
 BEECH BROS YARA 122Y  
 BEECH BROS UNNA 817U  
 MUIRHEAD LIVE WIRE 95R  
 KOP CROSBY 137W  
 KOP MS BENGIE 6P  
**MRL MISS 647Y**  
 LCHMN BODYBUILDER 7303F  
 NUG ROSIE 538R  
 NUG MISS FLICK

CE	BW	WW	YW	MCE	MWW	MILK
0.1	5.9	85.8	126.7	2.3	67.8	24.9
API	97.32	TI	69.3			

*Exposed to R Plus Focus 7041E April 30 - June 1.*

A feature homo polled Rust daughter here again out of a dandy cow family. We bought the Rosie female way back in 06 as the feature open heifer in the Edmonton Farm Fair sale from Maxwells and the dam 647Y raised the \$20,000 MRL Roosevelt bull to Mandan Lake Simmentals in our 2018 bull sale and also had a feature heifer in last years sale going to Jorgensen Land & Cattle. Powerful, predictable genetics here with longevity built in.





February 17 2020 : 2139891 : MRLA 0655H

## 48 MRLA MISS 0655H

BW: 72 lbs Adj WW: 646 lbs

RED U-2 RECKONING 149A  
 RED U-2 REVERENCE 198C  
 RED U-2 LAKOTA 427Y  
**RED U2 RETROSPECT 29E**  
 RED U-2 AUTHENTIC 139A  
 RED U-2 ANEXA 226C  
 RED U-2 ANEXA 21Y

CONNEALY EARNAN 076E  
 BROOKING BANK NOTE 4040  
 E A ROSE 918  
**MRLA MISS 7360E**  
 S A V 004 DENSITY 4336  
 JL LADY 06 112  
 LADY OF PEAK DOT 817P

BW	WW	YW	MLK	CE	MCE
1.2	49	80	17	5.0	6.0

*Bred to S A V Final Answer on April 22. Exposed to U2 38 Special April 30 - June 1.*

Probably the hardest one to part with in the Angus division that we have ever parted with. We think this one is pretty special and breeding potential is unlimited. A black red carrier sire by the U2 Retrospect that has been a breeding phenom. His first son to sell MRLA Respect commanded \$130,000 as lead off bull in our 2020 bull sale (wait until you see his first sons this spring) and the daughters are flat out phenomenal ideal Angus matrons, with a daughter leading off this event last year as our high selling female. On the bottom side of the pedigree is even more intriguing. Her dam is none other than an ET daughter by Brooking Bank Note out of the Forum SAV Density donor J1 Lady 06. Come As UR has sold 3 daughters through Brookings fall female even at \$40,000, \$18,000 and \$34,000 plus numerous other highlights. For the 0655H female herself she is flawless in phenotype, she is one that in the picture pen just every time she stopped it is the perfect shot. This young donor cow in the making has endless potential when you analyze this pedigree lining up the very top red and black Angus sires and donor cows in the business. MRL retaining 1 flush.

January 2 2020 : 2136826 : MRLA 0503H

## 49 RED MRLA MISS 0503H

BW: 85 lbs Adj WW: 672 lbs

RED LSF SAGA 1040Y  
 RED PIE SPECIALIST 430  
 RED PIE PLAYMATE 232  
**RED COCKBURN ASSASSIN 624D**  
 RED LAZY MC HUSTLE 18T  
 RED COCKBURN CORA 254Z  
 RED WILBAR CORA 443P

RED BRYLOR SDL PASQUALE 213P  
 RED MRLA ECONOMY 810  
 RED PFRA MS LAKOTA 105K  
**RED MRLA MISS 337X**  
 RED RINGSTEAD DAWSON 209R  
 RED MRLA MISS 588U  
 RED MRLA 793R

BW	WW	YW	MLK	CE	MCE
2.2	58	95	32	-1.0	5.0

*Exposed to U2 38 Special April 30 - June 1*

A powerful red female here sired by the \$75,000 Cockburn Assassin bull and one of our strongest cow families. A front end sister sold to the Sunberry Valley Angus program in Alberta. Service to the exciting U2 38 Special bull.

January 14 2020 : 2139611 : MRLA 0545H

## 50 RED MRLA MISS 0545H

BW: 76 lbs Adj WW: 549 lbs

RED LSF SAGA 1040Y  
 RED PIE SPECIALIST 430  
 RED PIE PLAYMATE 232  
**RED COCKBURN ASSASSIN 624D**  
 RED LAZY MC HUSTLE 18T  
 RED COCKBURN CORA 254Z  
 RED WILBAR CORA 443P

RED MRLA TILT 80Z  
 RED MRLA GENERATOR 9C  
 RED MRLA MISS 3336A  
**RED MRLA MISS 7328E**  
 RED GARA HEAVENLY 65C  
 RED GARA QUEEN 141S

BW	WW	YW	MLK	CE	MCE
1.3	37	67	28	0.0	6.0

*Bred to U2 Retrospect 29E on April 7.*

*Exposed to U2 38 Special April 30 - June 1*

A stout, big bodied Assassin daughter once again back to a really productive cow family. Bred early to U2 Retrospect whose semen has been kept exclusive to MRL.

# ANGUS BRED HEIFERS

January 20 2020 : 2139669 : MRLA 0579H

## 51 RED MRLA MISS 0579H

BW: 80 lbs Adj WW: 579 lbs

S A V RESOURCE 1441  
MRLA RELOAD 56C 1881524  
RED MRLA MISS 641Y  
**RED MRLA RESOURCE 137E**  
S A V HARVESTOR 0338  
MRLA MISS 4422B  
MRLA MISS 433T

RED SIX MILE AVIATOR 217P  
RED SIX MILE AVATAR 385X  
RED SIX MILE SUSAN 30N  
**RED MRLA MISS 4486B**  
RED MRLA 73T  
RED MRLA MISS 606Y  
RED PFRA MS LAKOTA 129M

BW	WW	YW	MLK	CE	MCE
2.7	33	63	18	1.0	6.0

*Bred to U2 Retrospect 29E on April 9. Exposed to U2 38 Special April 30 - June 1*

We have dug really deep this year to offer not one but two of our most elite Red Resource daughters. The Red Resource bull is on quite a roll. His progeny are the real deal. The heifer calves at the U2 dispersal set the tone. Their first sons topped sales in 2020 not only here at MRL but a \$130,000 son at U2 and \$90,000 son at SSS and just last week, 2 heifer calves in the US sired by Resource at \$115,000 and another at Piepers for \$75,000. Don't miss your opportunity to own one fellas and the service to U2 Retrospect is the perfect combination.



February 14 2020 : 2139644 : MRLA 0651H

## 52 RED MRLA MISS 0651H

BW: 85 lbs Adj WW: 665 lbs

S A V RESOURCE 1441  
MRLA RELOAD 56C 1881524  
RED MRLA MISS 641Y  
**RED MRLA RESOURCE 137E**  
S A V HARVESTOR 0338  
MRLA MISS 4422B  
MRLA MISS 433T

RED MRLA NEW ERA 87Y  
RED MRLA MILLENIUM 75B  
RED MRLA MISS 580U  
**RED MRLA MISS 6695D**  
RED MRLA 108R  
RED MRLA MISS 724W  
RED MRLA 757R

BW	WW	YW	MLK	CE	MCE
2.0	43	85	22	2.0	2.0

*Exposed to U2 38 Special April 30 - June 1*

Well just when you thought it couldn't get any better in the lineup for 2021, have a look here. Yet another power daughter by the \$90,000 breeding machine MRLA Red Resource and on the bottom side, two of our all time most productive and elite cow families in the 580U and 757R matrons. Pretty cool, powerful, proven pedigree here and mated to our newest herd sire and one we're pretty excited about - U2 38 Special, the \$40,000 Lot 1 bull in U2Q bull sale last spring. His dam, 113Z is one of the most elite cows in the Red Angus breed ever. Big time ROI potential on this one.



January 23 2020 : 2139626 : MRLA 0593H

## 53 RED MRLA MISS 0593H

BW: 95 lbs Adj WW: 616 lbs

RED LSF SAGA 1040Y  
RED PIE SPECIALIST 430  
RED PIE PLAYMATE 232  
**RED COCKBURN ASSASSIN 624D**  
RED LAZY MC HUSTLE 18T  
RED COCKBURN CORA 254Z  
RED WILBAR CORA 443P

RED BAR-E-L RIBEYE 103R  
RED BAR-E-L WARDEN 144W  
RED BAR-E-L LARKABA 72N  
**RED MRLA MISS 4461B**  
RED BUF CRK DYNAMICS 3820  
RED GARA DUCHESS 1M  
RED GARA DUCHESS 178K

BW	WW	YW	MLK	CE	MCE
3.8	44	84	26	-8.0	0.0

*Bred to U2 Retrospect 29E on April 23.*

*Exposed to U2 38 Special April 30 - June 1*

A stunning Assassin daughter here that comes by her powerful phenotype honestly, going back to one of our strongest and most consistent cow families with several herdbulls to their credit over the years. A maternal sister was also a top heifer in our 2018 event going to Kenray's progressive program. Once again, service to U2 retrospect whos semen bank is near extinct.



# 60 COMMERCIAL SIMM/ANGUS BRED HEIFERS

A powerful group of MRL home raised Simmental, Angus and Simm/Angus commercial heifers. These heifers are the females born in our spring calving herd and sisters to the most powerful set of Coming 2 Year old bulls for the March bull sale we have ever offered . These heifers are almost entirely purebred Simmental, purebred Angus or true F1 Simm/Angus females and carry the same genetics, type and kind to the purebred heifers in the offering . The heifers are AI'd to industry leading Angus calving ease bulls to start calving in March.

\*Reputation Females \*Quality Genetics. \*Total Herd Health Protocol -Females will be matched and sold in groups of 2 or 3 -AI breeding info will be posted -AI bred to top calving ease bulls June 7-12 and exposed to a feature MRLA 83D son working here at MRL -Powerful herd building females with pedigree offered to our commercial customers

## RED SIMMENTAL SIRE HEIFERS



## BLACK SIMMENTAL SIRE HEIFERS



# RED & BLACK ANGUS SIRE HEIFERS



## MRL 28th Annual Bull Sale

**SATURDAY, MARCH 5, 2022**

March 2022						
Sunday	Monday	Tuesday	Wednesday	Thursday	Friday	Saturday
		1	2	3	4	5
6	7	8	9	10	11	12
13	14	15	16	17	18	19
20	21	22	23	24	25	26
27	28	29	30	31		

Featuring Sons of.....

- |               |                   |                   |
|---------------|-------------------|-------------------|
| MRL Missile   | MRL Playmaker     | R Plus Focus      |
| MRL Certified | SVS Tycoon        | WS Proclamation   |
| MRL Bender    | BBS Load 'M Up    | MRLA Red Resource |
| IPU Bentley   | Rust 18C          | U2 Retrospect     |
| LFE Riddler   | Hart State of War | MRLA Respect      |

**MARK YOUR  
CALENDAR**

**180 BEEF BULLS**

Red & Black Simmental  
Red & Black Angus

PLEASE RETURN UNDELIVERABLE CATALOGS TO:  
MCMILLEN RANCHING LTD.  
Box 99  
CARRIEVALE, SK  
SOC OPO



RETURN POSTAGE GUARANTEED  
PORT DE RETOUR GARANTI

*Time Sensitive Material*

*Thank You to our 2020 buyers!!!*

# MRL

## HERDBUILDER 21

---

### FALL FEMALE PRODUCTION SALE

---

LI FARMS, AB  
CIRCLE M FARMS, MB\*  
HARVIE CREST, AB\*  
BRUECKNER EALES SIMMENTAL, ND\*  
STEEVES LAND & CATTLE, SK\*  
JORGENSEN LAND & CATTLE, SK  
HARLY DAY, SK\*  
WESTWAY FARMS, AB\*  
DART SIMMENTALS, AB  
LAWNVIEW SIMMENTAL, MB\*  
XRC SIMMENTALS, SK  
BELL SIMMENTALS, ND\*  
DENNIS MAUTHE, MB\*  
DIAMOND K RANCH, SK\*  
DANA FLAMAN, SK\*  
BAR O FARMS, MB\*  
HIDDEN GEM LIVESTOCK, AB  
GOUDY'S PRAIRIE ACRES, SK\*  
JOHNSON FARMS SIMMENTAL, AB  
TSN LIVESTOCK, MB\*  
SECTION 17 LIVESTOCK, SK\*  
C & E STEPHENS FARMS, SK  
CHARLIE PORTER, SK  
KASH SIMMENTAL, SK\*  
DOWNHILL SIMMENTAL, MB\*  
KWIATKOWSKI CATTLE, AB  
L & L SIMMENTAL, SK\*  
CARPATHIAN LAND & LIVESTOCK, AB  
DANIEL LOEWEN, BC  
JC SIMMENTAL, SK\*  
BOUCHARD LIVESTOCK, AB\*  
BRISTOL VIEW, QC  
BOSSENCE FARMS, SK\*  
DUBAS RED ANGUS, NE

VOLUME BUYER: STEEVES LAND & LIVESTOCK

